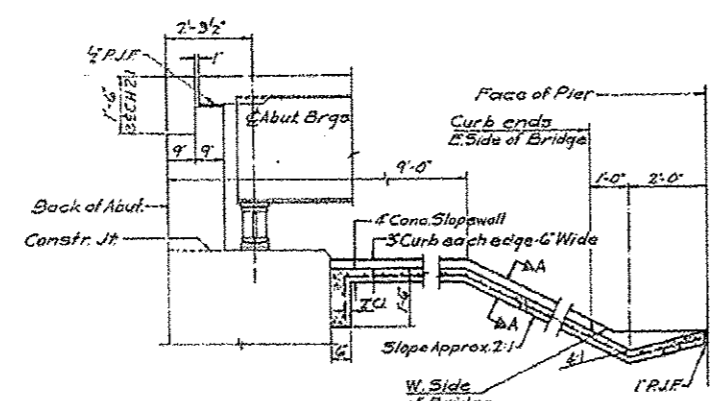
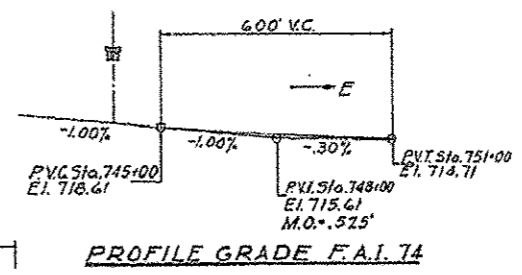
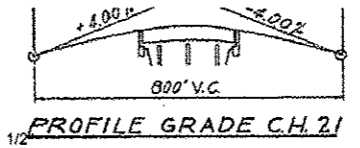
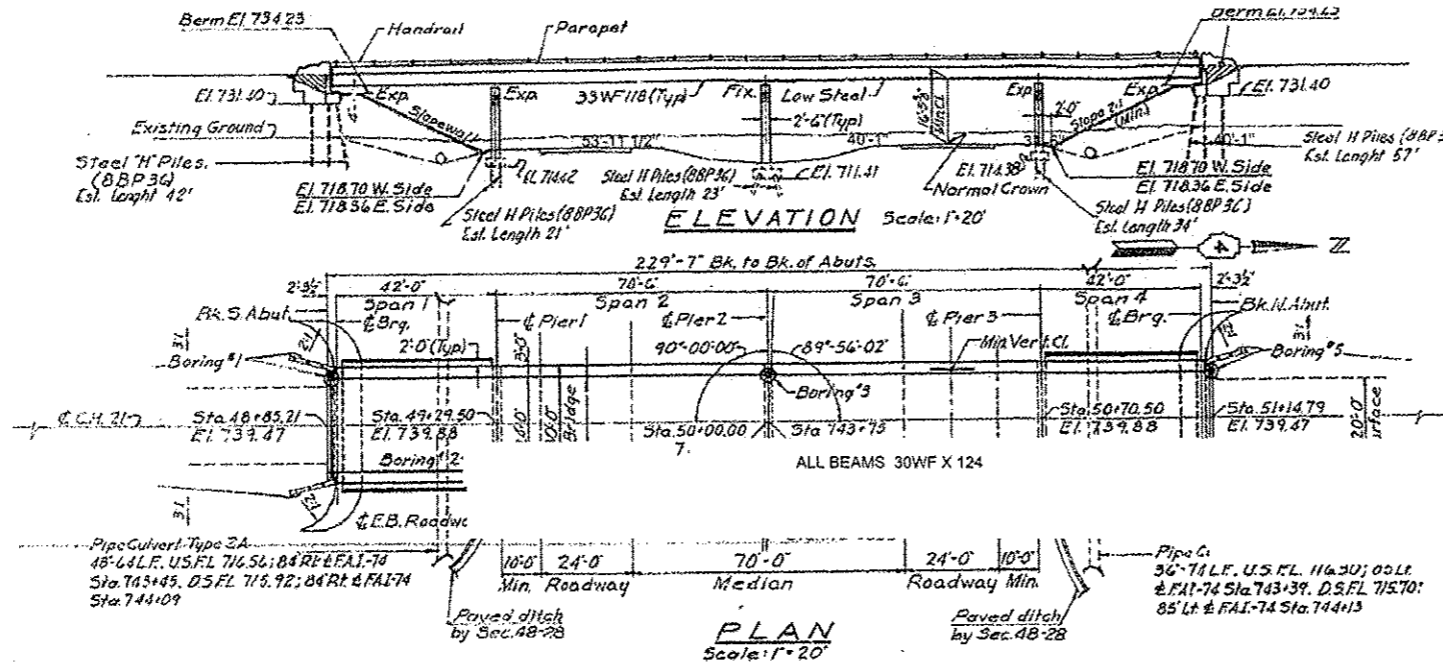


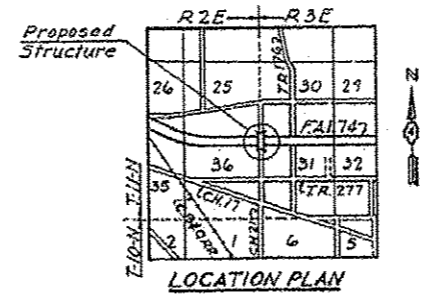
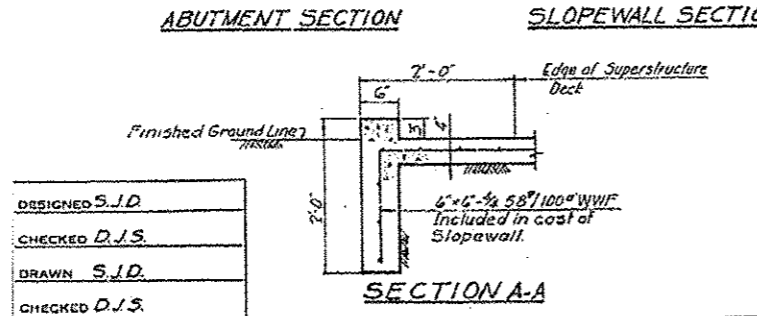
# LOCATION 2 S.N. 048-0061 INFORMATION ONLY

What is this sheet??



STATION 743+75  
BUILT 19 BY  
STATE OF ILLINOIS  
F.A. RT 74 SEC 48-28 H.B.  
F.A. PROJ. 1-74-3 (15)  
LOADING HS 15

NAME PLATE LETTERING  
See Standard 2113-1  
(for Location See Sheet 13)



Interim Specs. 1764, 1763 and 1764  
wearing surface  
Live Load HS 15-44  
Live Load Impact deflection 5/800  
Non-Composite Construction.

**DESIGN STRESSES**  
 $f_c = 3500$  p.s.i. Reinforced Concrete  
 $f_c = 1400$  p.s.i. Substructure & Superstructure  
 $f_c = 75$  p.s.i. Footings and Wingwalls  
 $f_s = 20,000$  p.s.i. Reinforcement  
 $f_s = 20,000$  p.s.i. Structural Steel  
 $n = 10$

**TOTAL BILL OF MATERIAL**

Item	Unit	Super.	Sub.	TOTAL
Class A Excavation Structures	Cu Yds.	-	157.0	157.0
Class X Concrete	Cu Yds.	219.8	181.7	401.5
Furn & Erect Struct. Steel	Lbs.	165,540	-	165,540
Aluminum Handrail	Lin. Ft.	453	-	453
Reinforcement Bars	Lbs.	22,730	17,130	39,860
Steel H Piles (8BP36)	Lin. Ft.	-	1,331	1,331
Test Piles (Steel 8BP36)	Each	-	2	2
Name Plates	Each	-	2	2
Slope Wall - 4"	Sq. Yds.	-	-	366
Protective Coat	Sq. Yds.	906	-	906

\*Class A Excavation for Structures includes Excavation for Slope Wall.

APPROVED  
*Carl E. Thumman Jr.*  
Professional Engineer

Rev. Class X Concrete from 390.9 Cu Yds. to 401.5 Cu Yds. 9-14-66 N.R.F.

FILE NAME : April 2813 bridge painting.dgn	USER NAME : TOM INGLIS	DESIGNED - TOM INGLIS	REVISED -	<b>STATE OF ILLINOIS DEPARTMENT OF TRANSPORTATION</b>	<b>LOCATION 2 FRAMING PLAN</b>	F.A. RTE. VAR	SECTION D4 BRIDGE PAINTING 2012	COUNTY various	TOTAL SHEETS 21	SHEET NO. 9
Default	PLOT SCALE : 48.0000' / 1 in.	DRAWN - TOM INGLIS	REVISED -	SCALE: N/A	SHEET OF SHEETS STA. TO STA.	CONTRACT NO. 68B26 ILLINOIS FED. AID PROJECT				
	PLOT DATE : 2/22/2013	CHECKED - NICK JACK	REVISED -							
		DATE - 2/6/13	REVISED -							