

04-26-13 LETTING ITEM 139

FOR INDEX OF SHEETS, SEE SHEET NO. 1

- 2. Additional location maps
- 3&4. Summary of Quantities
- 5. General Notes
- 6-21 Plan Sheets

**STANDARDS**

- 701101-03
- 701106-02
- 701901-02
- 701400-06
- 701402-09
- 701601-08
- B.L.R.22-7

ADT AND TRUCKS  
LOCATIONS 1 - 4  
15,700 AND 31%

J.U.L.I.E.  
JOINT UTILITY LOCATION INFORMATION FOR EXCAVATION  
1-800-892-0123  
OR 811

PROJECT ENGINEER TOM INGLIS (309) 671-3481  
PROJECT MANAGER NICK JACK (309) 671-4451

CONTRACT NO. 68B26 CATALOG NO. 034882-00D

STATE OF ILLINOIS  
DEPARTMENT OF TRANSPORTATION

DIVISION OF HIGHWAYS

**PROPOSED  
HIGHWAY PLANS**

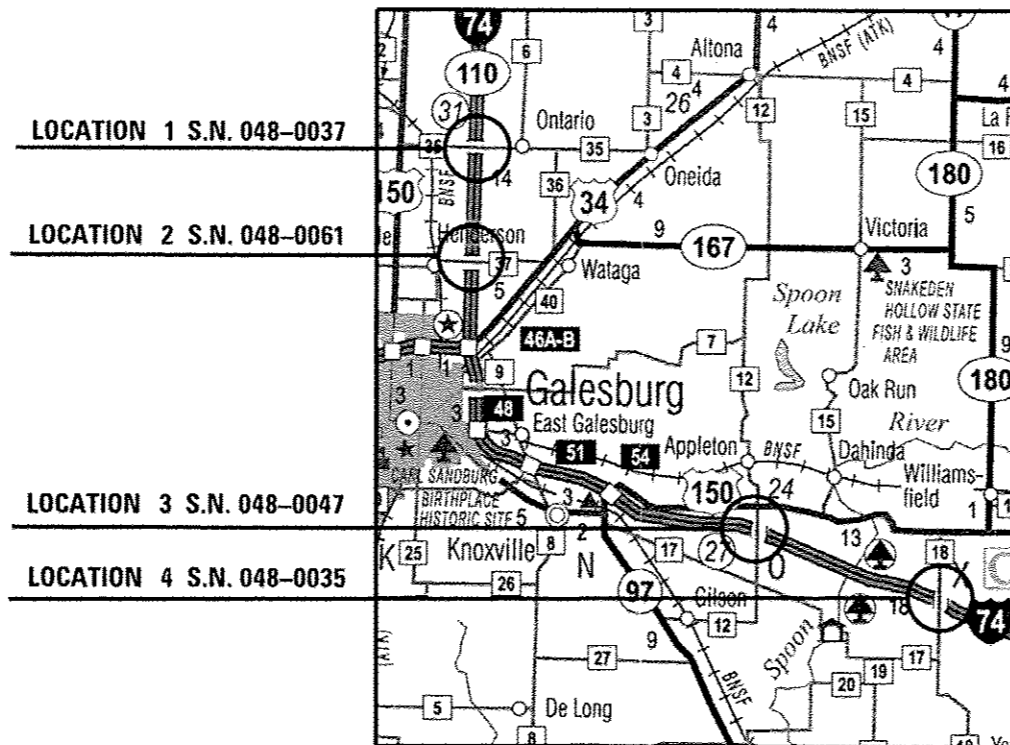
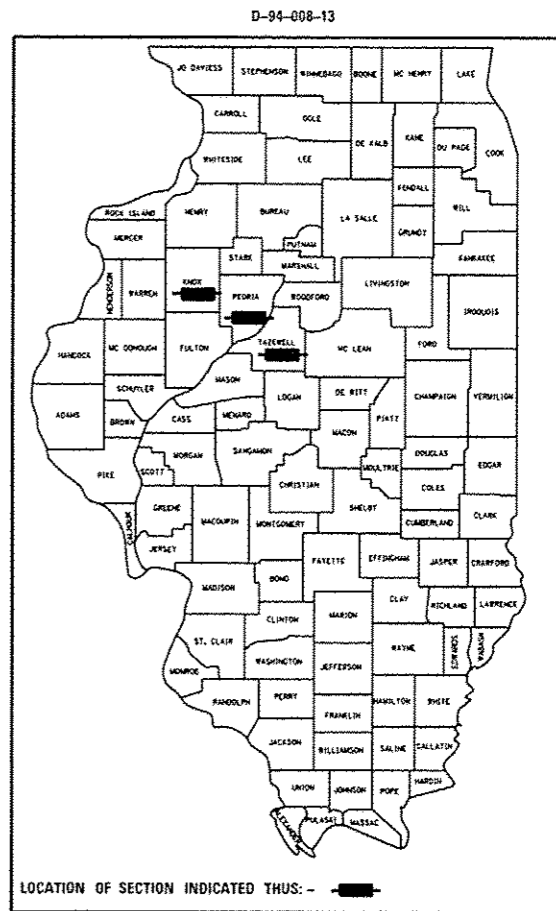
(VAR) ROUTE VARIOUS  
SECTION D4 BRIDGE PAINTING 2013  
PROJECT N/A

TYPE of IMPROVEMENT BRIDGE PAINTING

KNOX, PEORIA, TAZEWELL COUNTIES

C-94-013-13

F.A. RITE.	SECTION	COUNTY	TOTAL SHEETS	SHEET NO.
VAR	D4 BRIDGE PAINTING	various	21	1
ILLINOIS			CONTRACT NO. 68B26	



STATE OF ILLINOIS  
DEPARTMENT OF TRANSPORTATION  
DIVISION OF HIGHWAYS

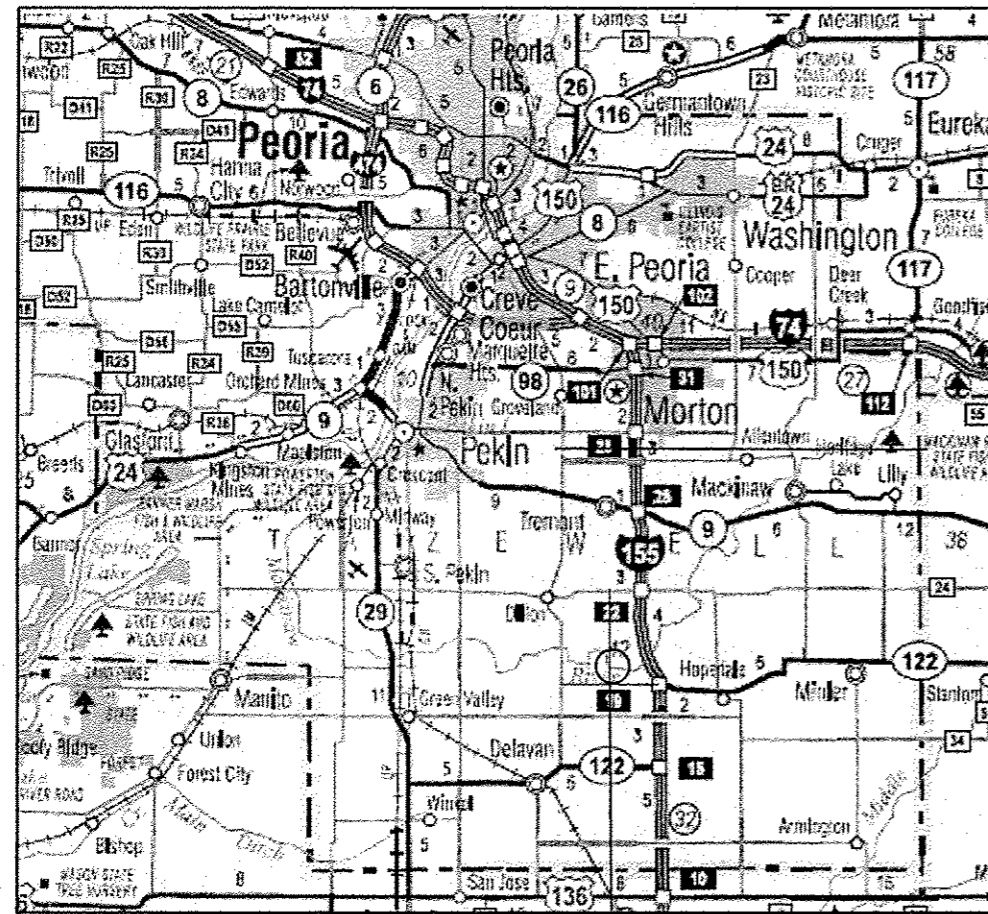
SUBMITTED Feb 21 20 13  
Joseph E. Crowley  
DEPUTY DIRECTOR OF HIGHWAYS, REGION ENGINEER

March 22 20 13  
John D. Baranzelli, P.E.  
acting ENGINEER OF DESIGN AND ENVIRONMENT

March 22 20 13  
Omer Osman, P.E.  
DIRECTOR OF HIGHWAYS, CHIEF ENGINEER

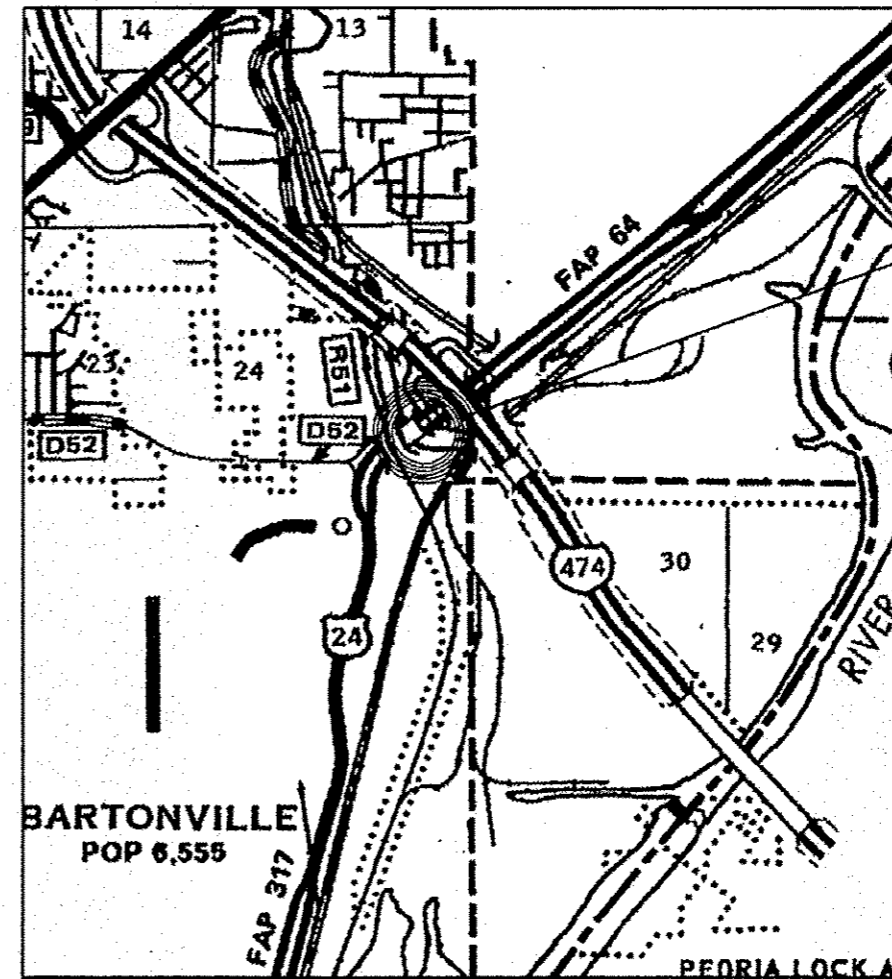
PRINTED BY THE AUTHORITY  
OF THE STATE OF ILLINOIS

# LOCATION MAP FOR TAZEWELL CO. AND PEORIA CO.



LOCATION 5 S.N. 090-0087

LOCATION 5  
ADT CARS 50  
TRUCKS NOT AVAILABLE



LOCATION 6 S.N. 072-0134

LOCATION 6  
ADT CARS 27,200  
TRUCKS 4.1%

FILE NAME April 2013 bridge painting.dgn	USER NAME inglisty	DESIGNED -	REVISED -	STATE OF ILLINOIS DEPARTMENT OF TRANSPORTATION	SCALE: SHEET OF SHEETS STA. TO STA.	F.A. RTE. VAR	SECTION 04 BRIDGE PAING 2013	COUNTY various	TOTAL SHEETS 21	SHEET NO. 2
DeFault	PLOT SCALE 40.0000 1/4 in.	DRAWN -	REVISED -			CONTRACT NO. 68B26				
	PLOT DATE 2/25/2013	CHECKED -	REVISED -			ILLINOIS FED. AID PROJECT				
		DATE -	REVISED -							

URBAN  
100% STATE

CONSTRUCTION CODE

CODE NO.	ITEM	UNIT	TOTAL QUANTITY	URBAN 100% STATE		
				07A0V	07A0M	07A0L
				KONX	TAZEWELL	PEORIA
				0014	0014	0014
				100% STATE	100% STATE	100% STATE
50606701	CLEANING AND PAINTING STRUCTURAL STEEL, LOCATION 1	L SUM	1	1		
50606702	CLEANING AND PAINTING STRUCTURAL STEEL, LOCATION 2	L SUM	1	1		
50606703	CLEANING AND PAINTING STRUCTURAL STEEL, LOCATION 3	L SUM	1	1		
50606704	CLEANING AND PAINTING STRUCTURAL STEEL, LOCATION 4	L SUM	1	1		
50606705	CLEANING AND PAINTING STRUCTURAL STEEL, LOCATION 5	L SUM	1		1	
50606706	CLEANING AND PAINTING STRUCTURAL STEEL, LOCATION 6	L SUM	1			1
67100100	MOBILIZATION	L SUM	1	0.8	0.1	0.1
70100207	TRAFFIC CONTROL AND PROTECTION, STANDARD 701402	EACH	4	4		
70101835	TRAFFIC CONTROL AND PROTECTION, STANDARD BLR 22	L SUM	1		1	
70102630	TRAFFIC CONTROL AND PROTECTION, STANDARD 701601	L SUM	1			1
X7015005	CHANGEABLE MESSAGE SIGN	CAL DA	30	20	5	5
Z0007101	CONTAINMENT AND DISPOSAL OF LEAD PAINT CLEANING RESIDUES NO.1	L SUM	1	1		
Z0007102	CONTAINMENT AND DISPOSAL OF LEAD PAINT CLEANING RESIDUES NO.2	L SUM	1	1		
Z0007103	CONTAINMENT AND DISPOSAL OF LEAD PAINT CLEANING RESIDUES NO.3	L SUM	1	1		

FILE NAME :  
April 2013 bridge painting.dgn

USER NAME : kerthr

DESIGNED -  
DRAWN -

REVISED -  
REVISED -

PLOT SCALE : 100.0000' / 1"

CHECKED -  
DATE -

REVISED -  
REVISED -

PLOT DATE : 2/22/2013

STATE OF ILLINOIS  
DEPARTMENT OF TRANSPORTATION

SUMMARY OF QUANTITIES

F.A. RTE.	SECTION	COUNTY	TOTAL SHEETS	SHEET NO.
VAR	04 BRIDGE PAINTING 2013	VARIOUS	21	3
			68B26	

ILLINOIS FED. AID PROJECT

URBAN  
100% STATE

CONSTRUCTION CODE

CODE NO.	ITEM	UNIT	TOTAL QUANTITY	07A0V	07A0M	07A0L
				KNOX	TATEWELL	PEORIA
				0014	0014	0014
				100% STATE	100% STATE	100% STATE
Z0007104	CONTAINMENT AND DISPOSAL OF LEAD PAINT CLEANING RESIDUES NO.4	L SUM	1	1		
Z0007105	CONTAINMENT AND DISPOSAL OF LEAD PAINT CLEANING RESIDUES NO.5	L SUM	1		1	
Z0007106	CONTAINMENT AND DISPOSAL OF LEAD PAINT CLEANING RESIDUES NO.6	L SUM	1			1
Z0052398	PORTABLE TEMPORARY BARRIER SYSTEM	FOOT	319	319		
Z0052399	RELOCATE PORTABLE TEMPORARY BARRIER SYSTEM	FOOT	3833	3353		480

FILE NAME = April 2013 bridge painting.dgn

USER NAME = ksh  
DESIGNED -  
DRAWN -  
PLOT SCALE = 100.0000' / 1" =  
CHECKED -  
DATE -  
REVISED -  
REVISION -  
REVISION -  
REVISION -

STATE OF ILLINOIS  
DEPARTMENT OF TRANSPORTATION

SUMMARY OF QUANTITIES

F.A. RTE.	SECTION	COUNTY	TOTAL SHEETS	SHEET NO.
VAR	D4 BRIDGE PAINTING 2013	VARIOUS	21	4
ILLINOIS FED. AID PROJECT 68B26				

# COMMITMENTS

No Commitments have been made for this project.

# GENERAL NOTES

All cleaning and painting shall be as specified in the Special Provisions for "Cleaning and Painting Existing Structural Steel" All beams, brackets and all other structural steel shall be cleaned per Near White Blast Cleaning SSPC-SP10 according to the following schedule:

Bridge Locations 1 - 6. Entire Structure.

Recycled steel grit abrasive shall be used for all locations (under no circumstance will any other abrasive be allowed to substitute for steel grit)

At least two recycled grit nozzle men shall be operating simultaneously with vacuum cleaning operations. The equipment's blast pot shall also be capable of being refilled without interruption of the blasting or vacuuming operations. Independent blasting, vacuuming and refilling of the blast pot operations will not be allowed.

Bridge Locations 1-4. The existing protective shield will require temporary removal of the protective shield and reinstallation after the cleaning and painting work is completed, cost shall be included with cleaning and painting of the structural steel locations involved.

Bridge Location 6. Cleaning and painting of The steel deck beam support will not be required. In 2008 the beam ends were Metalized, cleaning and painting work shall be for the rest of structure not already metalized.

The final finish coat for the fascia beam shall be according to the following schedule:

Bridge location 1 - 4 and 6 shall be Blue (Munsel No. 10B 3/6)

The final finish coat for the underside shall be according to the the following schedule:

Bridge location 1 -4 and 6 shall be Light Gray ( Munsel No. 5B 7/1)

Bridge location 5. The entire structure shall be Light Grey ( Munsel No. 5B 7/1)

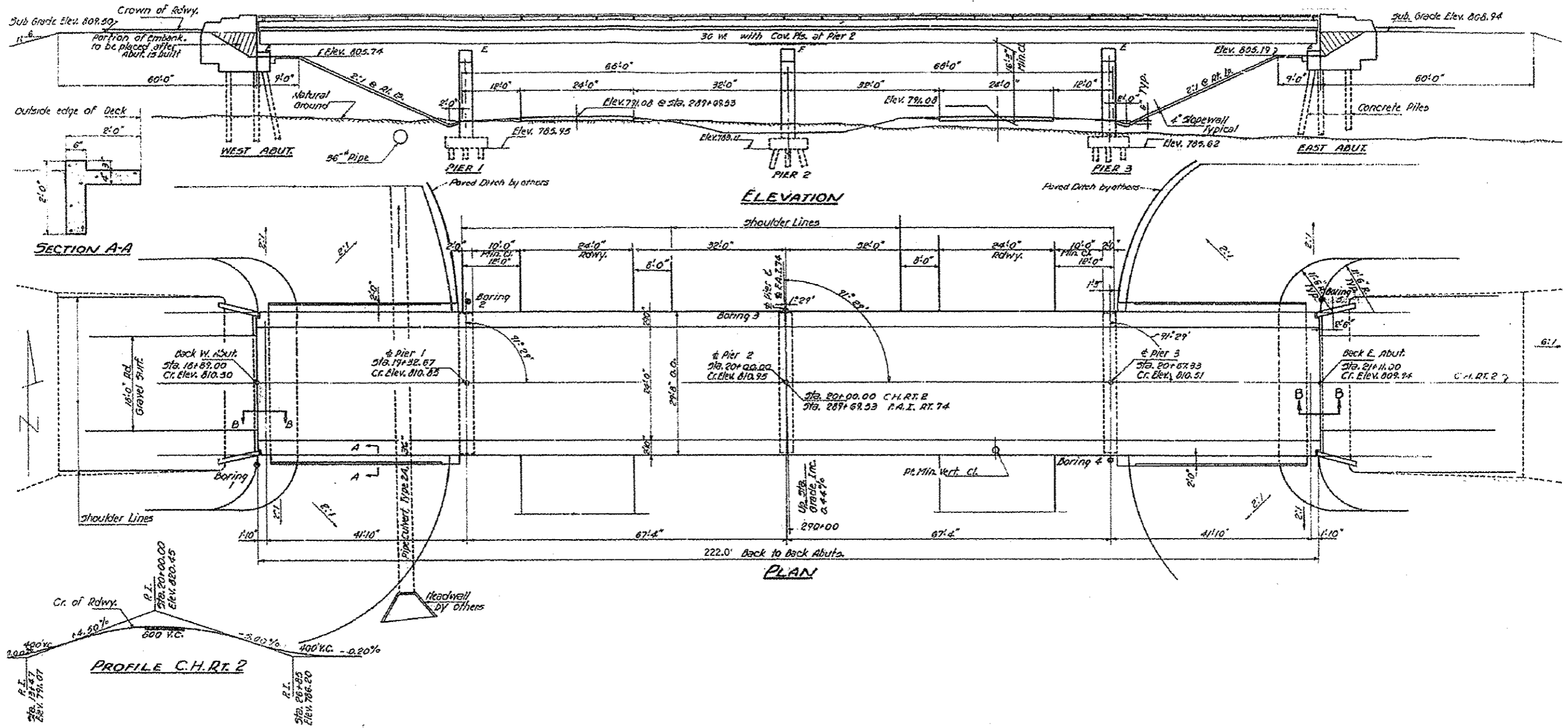
Bridge location 6. At the Contractors option the paint system can be Paint System 5.

No Air Monitors for this Project.

QP 1 & 2 Required for this Project.

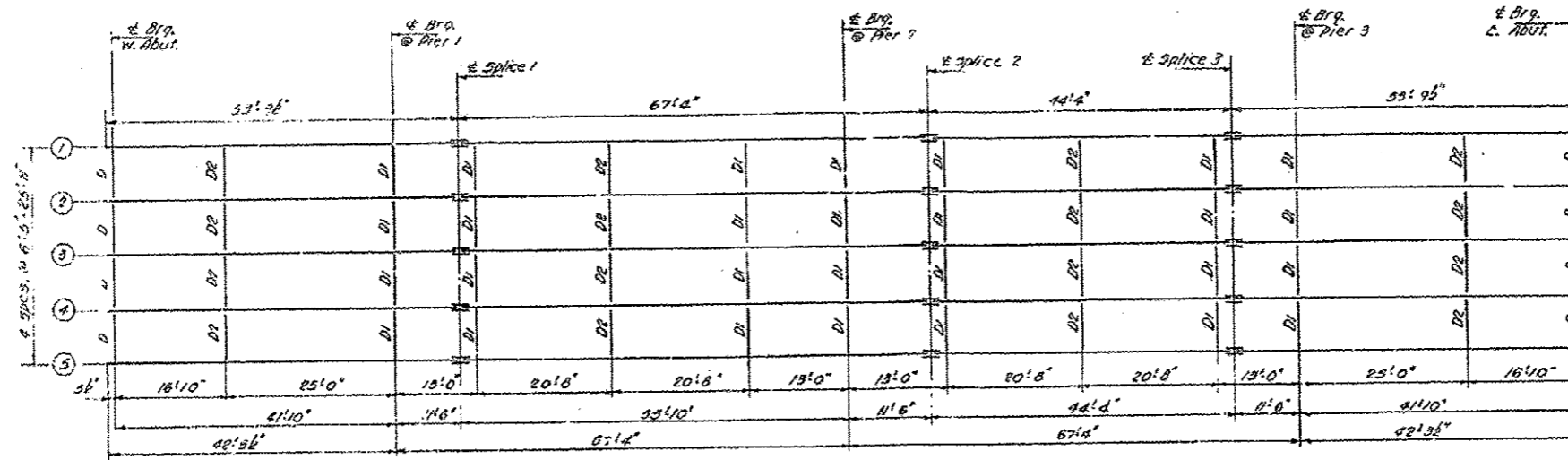
FILE NAME =	USER NAME =	DESIGNED -	REVISED -	<b>STATE OF ILLINOIS DEPARTMENT OF TRANSPORTATION</b>	commitments and general notes	F.A. RTE.	SECTION	COUNTY	TOTAL SHEETS	SHEET NO.	
C:\Users\JHGL\1ST\1\Desktop\Paint Tech\ap	1 2013 Bridge painting.dgn	DRAWN -	REVISED -			var	04 BRIDGE PAING 2013	various	21	5	
Default	PLOT SCALE = 48.0000 1" = 48'	CHECKED -	REVISED -			CONTRACT NO. 68B26		ILLINOIS FED. AID PROJECT			
	PLOT DATE = 3/28/2013	DATE -	REVISED -			SCALE:	SHEET	OF	SHEETS	STA.	TO STA.

# LOCATION 1 S.N. 048-0037 INFORMATION ONLY

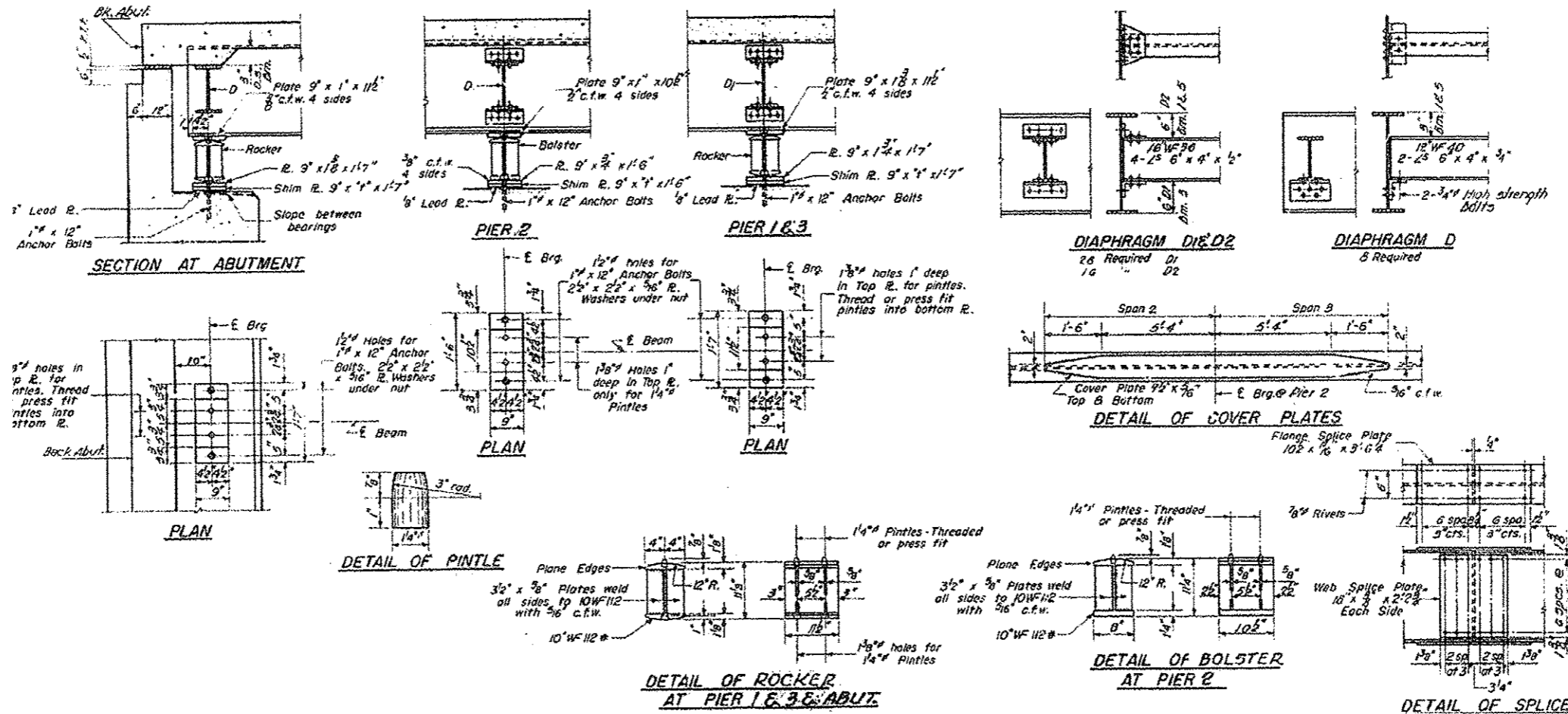


FILE NAME + April 2013 bridge painting.dgn	USER NAME + TOM INGLIS	DESIGNED - TOM INGLIS	REVISED -	<b>STATE OF ILLINOIS DEPARTMENT OF TRANSPORTATION</b>	location 1 plan view			F.A. RTE.	SECTION	COUNTY	TOTAL SHEETS	SHEET NO.			
Default	PLOT SCALE + 48.8888' / in.	DRAWN - TOM INGLIS	REVISED -		SCALE: N/A	SHEET	OF	SHEETS	STA.	TO STA.	VAR	04 BRIDGE PAINTING 2012	various	21	6
	PLOT DATE + 2/22/2013	CHECKED - NICK JACK	REVISED -									CONTRACT NO. 68B26			
		DATE - 2/6/13	REVISED -									ILLINOIS FED. AID PROJECT			

# LOCATION 1 S.N. 048-0037 INFORMATION ONLY



**FRAMING PLAN**  
All beams 30 WF 99

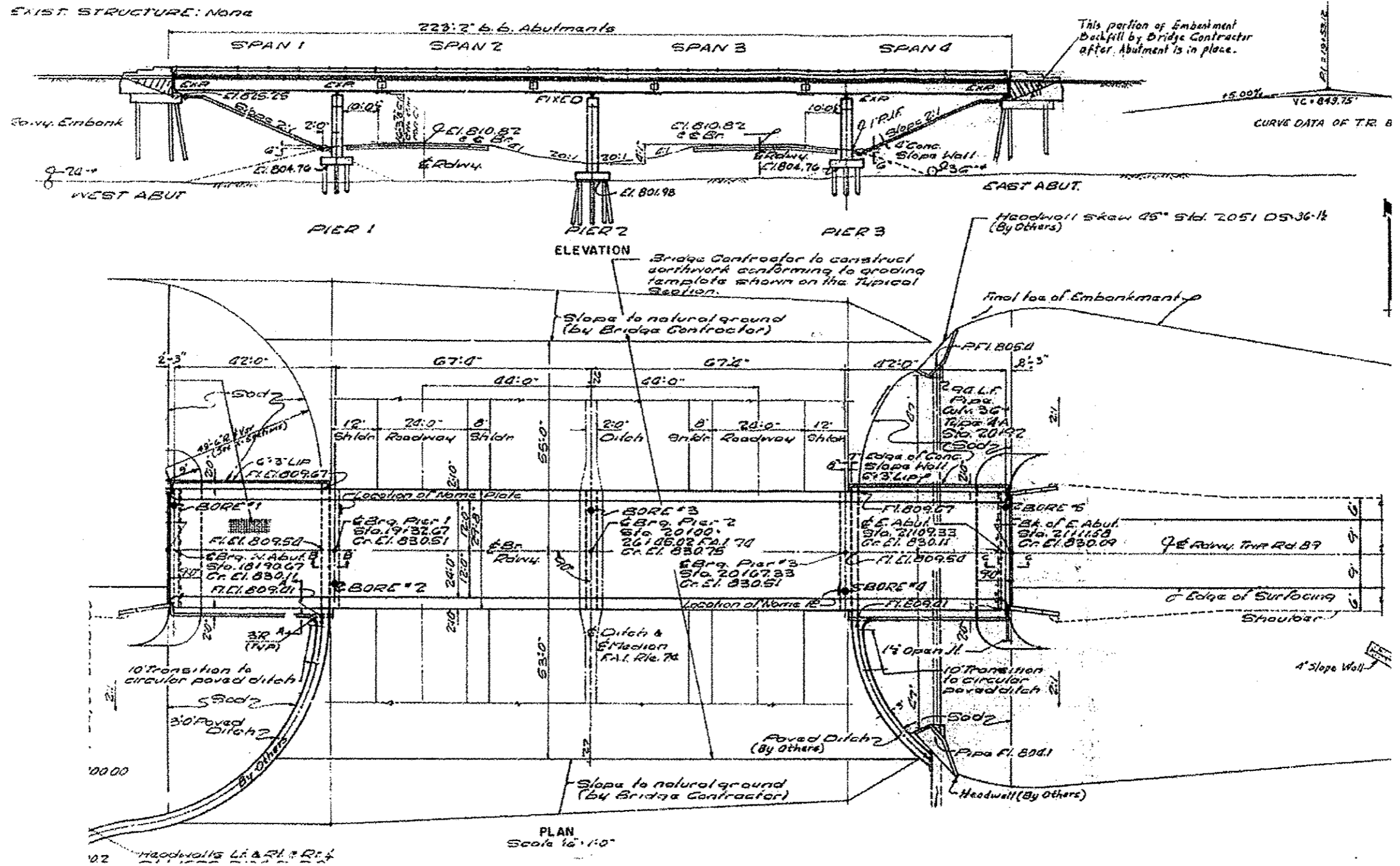


FILE NAME April 2013 bridge painting.dgn	USER NAME TOM INGLIS	DESIGNED TOM INGLIS	REVISED -	<b>STATE OF ILLINOIS DEPARTMENT OF TRANSPORTATION</b>	<b>LOCATION 1 FRAMING PLAN</b>	F.A. RTE.	SECTION	COUNTY	TOTAL SHEETS	SHEET NO.	
	PLOT SCALE 1/4" = 1'-0"	CHECKED NICK JACK	REVISOR -			SCALE N/A	SHEET OF	SHEETS STA.	TO STA.	ILLINOIS FED. AID PROJECT	CONTRACT NO. 68B26
DATE 2/6/13	REVISOR -	DATE 2/6/13	REVISOR -								



# LOCATION 2 S.N. 048-0061

## INFORMATION ONLY

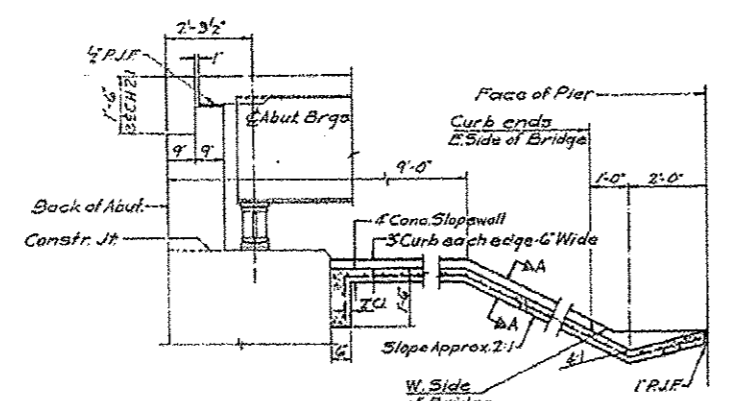
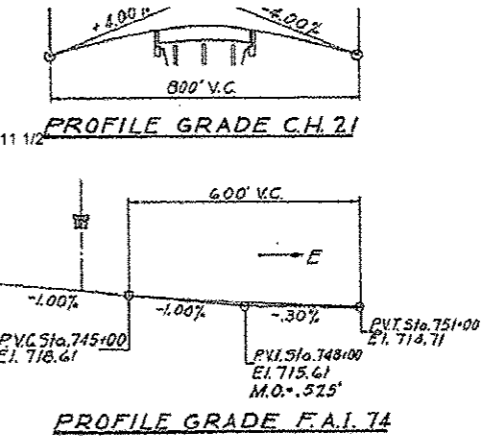
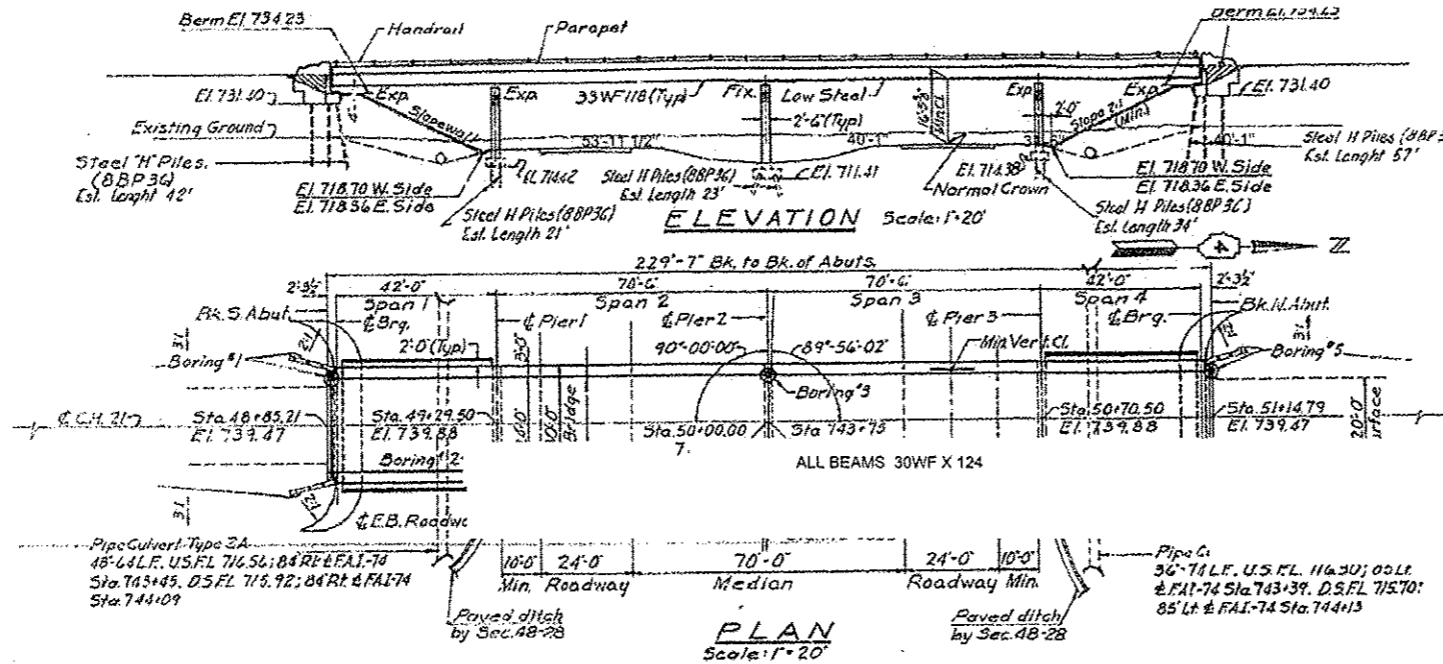


FILE NAME : April 2013 bridge painting.dgn	USER NAME : TOM INGLIS	DESIGNED - TOM INGLIS	REVISED -	<b>STATE OF ILLINOIS DEPARTMENT OF TRANSPORTATION</b>	<b>LOCATION 2 PLAN VIEW</b>	P.A. RTE. VAR	SECTION D4 BRIDGE PAINTING 2012	COUNTY various	TOTAL SHEETS 21	SHEET NO. 8
Default	PLOT SCALE : 40,0000 / in.	CHECKED - NICK JACK	REVISED -	SCALE: N/A	SHEET OF SHEETS STA. TO STA.	CONTRACT NO. 68B26 ILLINOIS FED. AID PROJECT				
	PLOT DATE : 2/22/2013	DATE - 2/6/13	REVISED -							



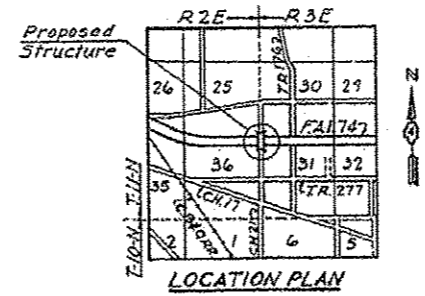
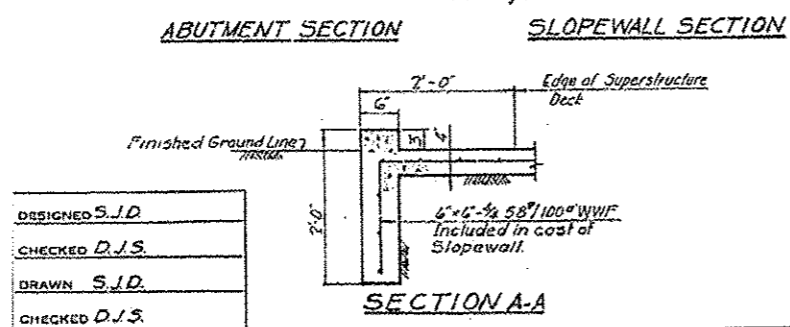
# LOCATION 2 S.N. 048-0061 INFORMATION ONLY

What is this sheet??



STATION 743+75  
BUILT 19 BY  
STATE OF ILLINOIS  
F.A.I. RT 74 SEC 48-28 H.B.  
F.A. PROJ. 1-74-3 (15)  
LOADING HS 15

NAME PLATE LETTERING  
See Standard 2113-1  
(for Location See Sheet 13)



Interim Specs. 1764, 1763 and 1764  
wearing surface  
Live Load HS 15-44  
Live Load Impact deflection 5/800  
Non-Composite Construction.

**DESIGN STRESSES**  
 $f_c = 3500$  p.s.i. Reinforced Concrete  
 $f_c = 1400$  p.s.i. Substructure & Superstructure  
 $f_s = 75$  p.s.i. Footings and Wingwalls  
 $f_s = 20,000$  p.s.i. Reinforcement  
 $f_s = 20,000$  p.s.i. Structural Steel  
 $n = 10$

**TOTAL BILL OF MATERIAL**

Item	Unit	Super.	Sub.	Total
Class A Excavation Structures	Cu Yds.	-	157.0	157.0
Class X Concrete	Cu Yds.	219.8	181.7	401.5
Furn & Erect Struct Steel	Lbs.	165,540	-	165,540
Aluminum Handrail	Lin Ft.	453	-	453
Reinforcement Bars	Lbs.	22,730	17,130	39,860
Steel H Piles (8BP36)	Lin Ft.	-	1,331	1,331
Test Piles (Steel 8BP36)	Each	-	2	2
Name Plates	Each	-	2	2
Slope Wall - 4"	Sq Yds.	-	-	366
Protective Coat	Sq Yds.	906	-	906

\*Class A Excavation for Structures includes Excavation for Slope Wall.

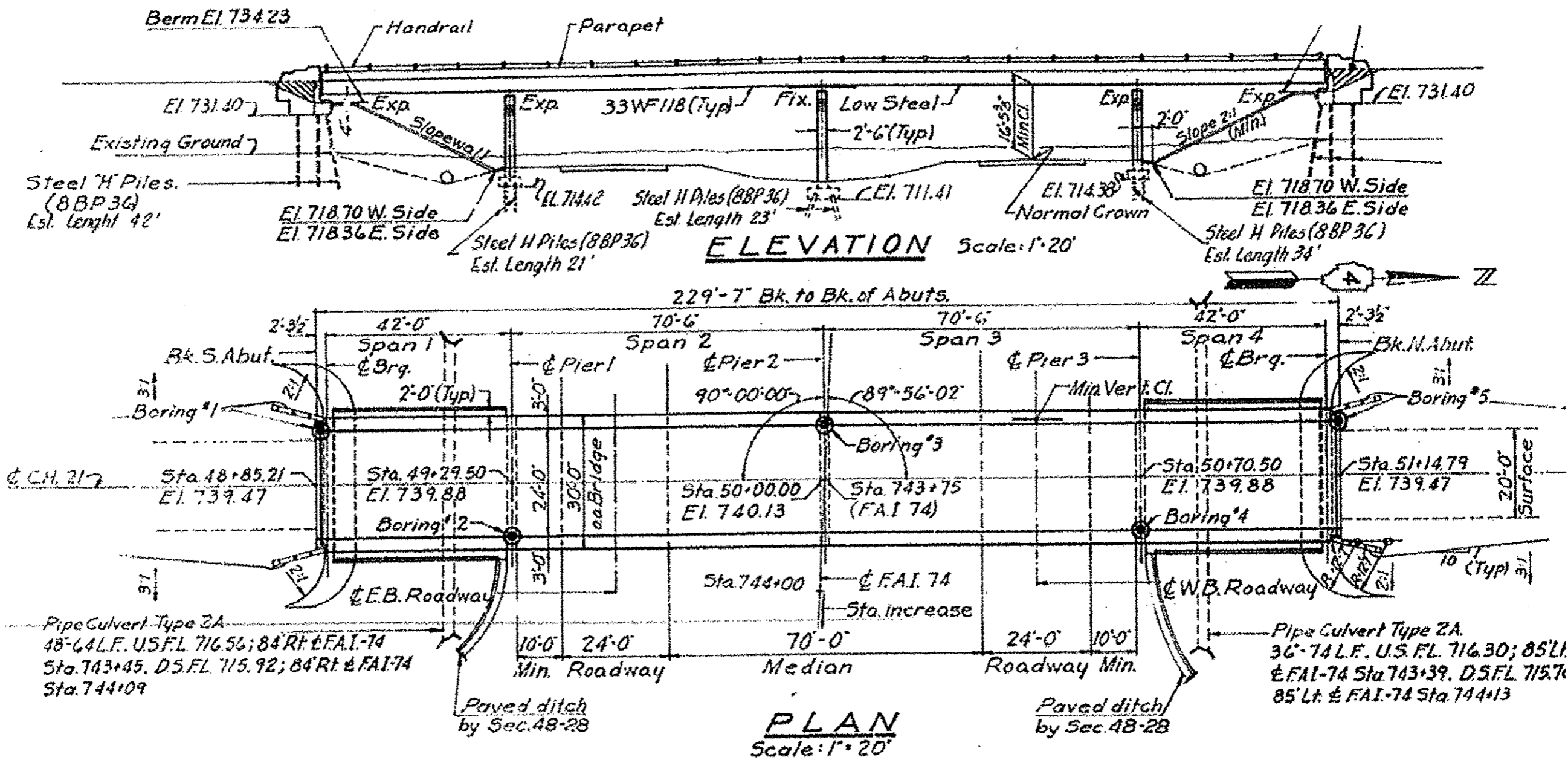
APPROVED  
*Carl E. Thumman Jr.*  
Professional Engineer

Rev. Class X Concrete from 390.9 Cu Yds. to 401.5 Cu Yds. 9-14-66 N.R.F.

FILE NAME : April 2813 bridge painting.dgn	USER NAME : TOM INGLIS	DESIGNED - TOM INGLIS	REVISED -	<b>STATE OF ILLINOIS DEPARTMENT OF TRANSPORTATION</b>	<b>LOCATION 2 FRAMING PLAN</b>	F.A. RTE. VAR	SECTION D4 BRIDGE PAINTING 2012	COUNTY various	TOTAL SHEETS 21	SHEET NO. 9
Default	PLOT SCALE : 48.0000' / 1"	DRAWN - TOM INGLIS	REVISED -	SCALE: N/A	SHEET OF SHEETS STA. TO STA.	CONTRACT NO. 68B26 ILLINOIS FED. AID PROJECT				
	PLOT DATE : 2/22/2013	CHECKED - NICK JACK	REVISED -							
		DATE - 2/6/13	REVISED -							

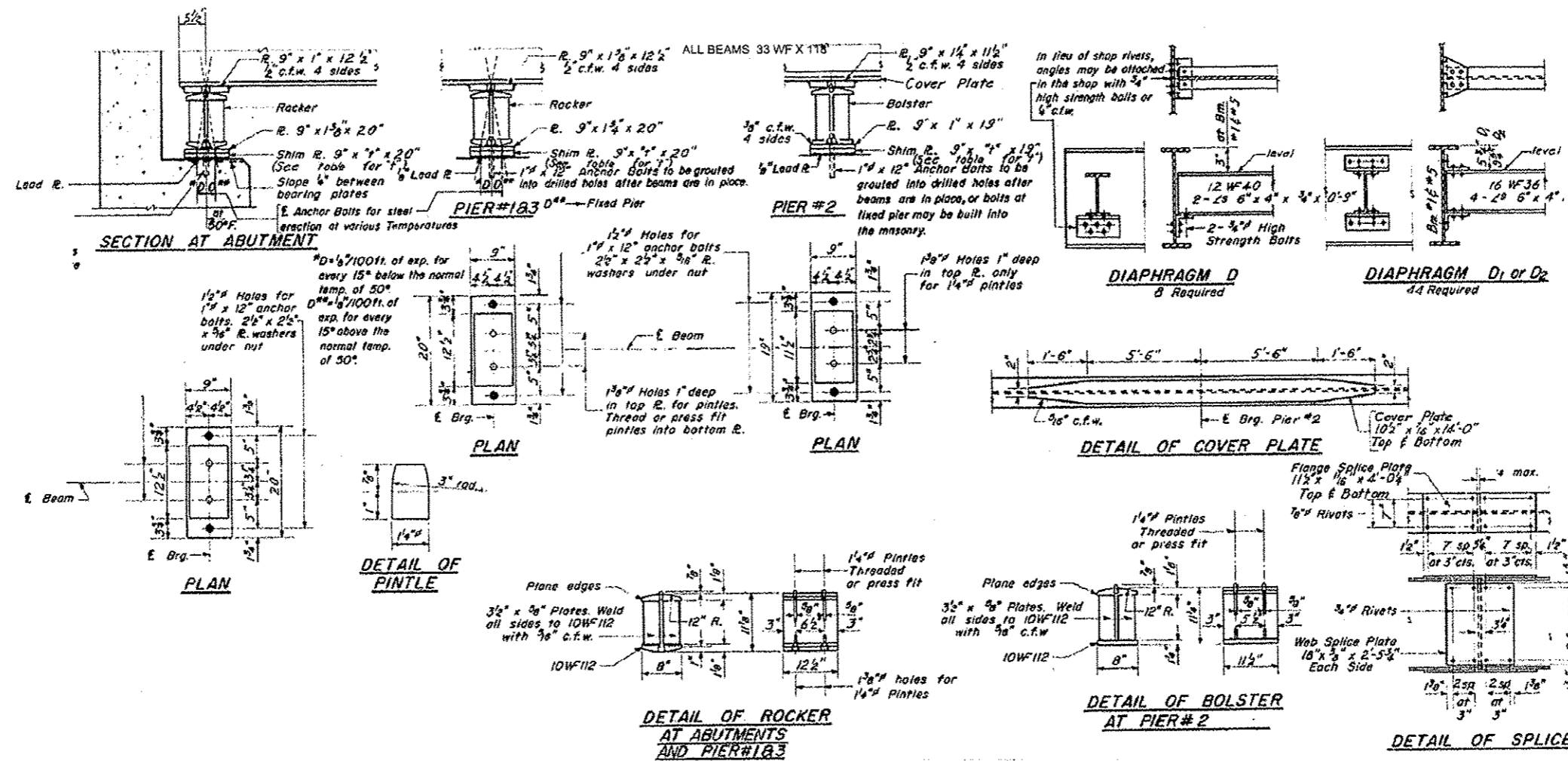
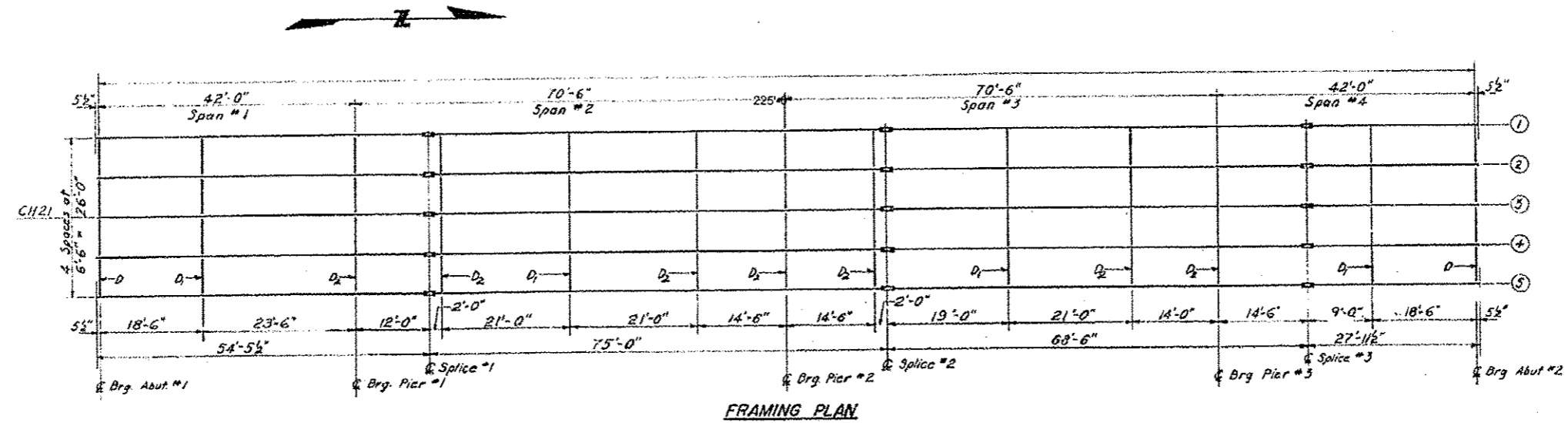
# LOCATION 3 S.N. 048-0047

## INFORMATION ONLY



FILE NAME *	USER NAME * TOM INGLIS	DESIGNED - TOM INGLIS	REVISED -	<b>STATE OF ILLINOIS</b>	<b>LOCATION 3 PLAN VIEW</b>	F.A. RTE.	SECTION	COUNTY	TOTAL SHEETS	SHEET NO.
April 2013 bridge painting.dgn		DRAWN - TOM INGLIS	REVISED -	<b>DEPARTMENT OF TRANSPORTATION</b>		VAR	D4 BRIDGE PAINTING 2012	various	21	10
Default	PLOT SCALE * 40.0000 1/1 in.	CHECKED - NICK JACK	REVISED -		SCALE: N/A	SHEET	OF	SHEETS	STA.	TO STA.
	PLOT DATE * 2/22/2013	DATE - 2/6/13	REVISED -							
CONTRACT NO. 68826										
ILLINOIS FED. AID PROJECT										

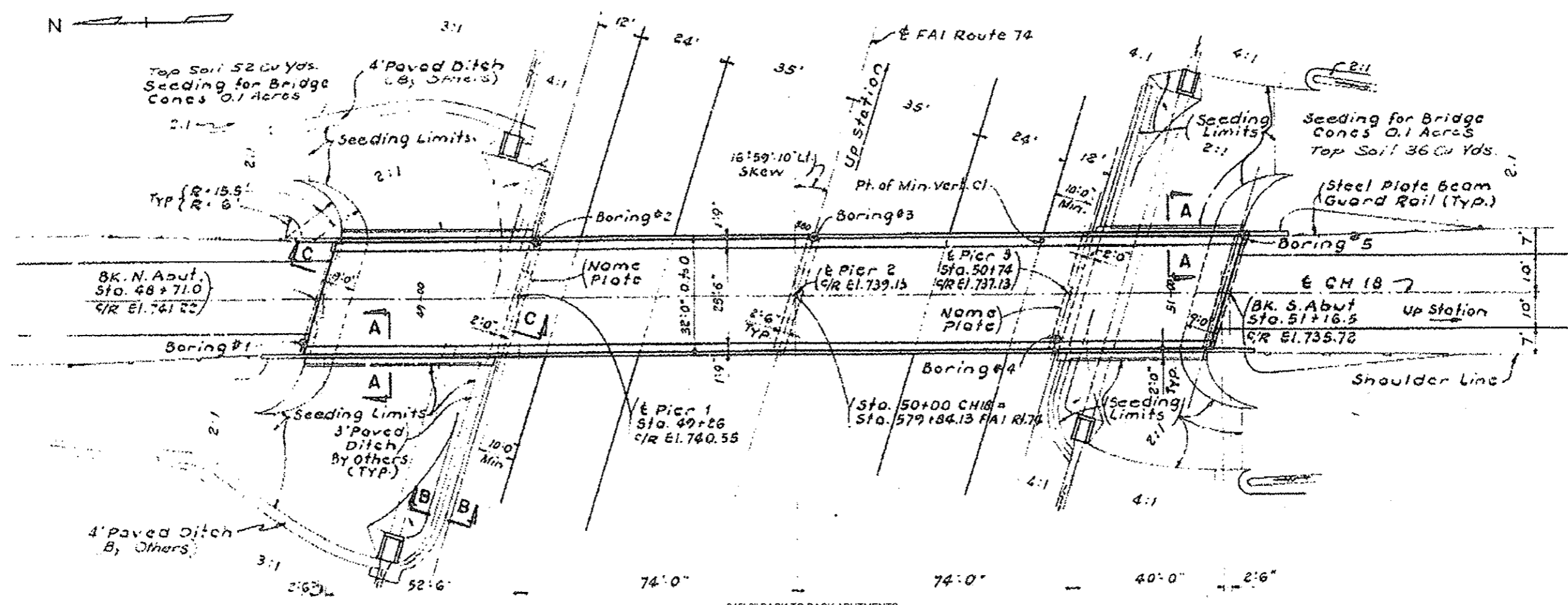
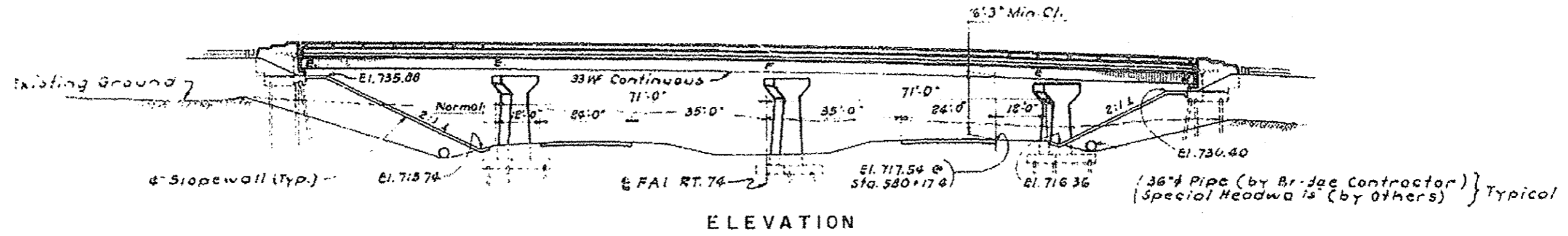
# LOCATION 3 S.N. 048-0047 INFORMATION ONLY



FILE NAME: April 2013 bridge painting.dgn	USER NAME: TOM INGLIS	DESIGNED: TOM INGLIS	REVISED: -	<b>STATE OF ILLINOIS DEPARTMENT OF TRANSPORTATION</b>	<b>LOCATION 3 FRAMING PLAN</b>	F.A. RTE.	SECTION	COUNTY	TOTAL SHEETS	SHEET NO.
		DRAWN: TOM INGLIS	REVISED: -			VAR	D4 BRIDGE PAINTING 2012	various	21	11
		CHECKED: NICK JACK	REVISED: -							
		DATE: 2/6/13	REVISED: -							
SCALE: N/A SHEET OF SHEETS STA. TO STA.						CONTRACT NO. 68B26 ILLINOIS FED. AID PROJECT				

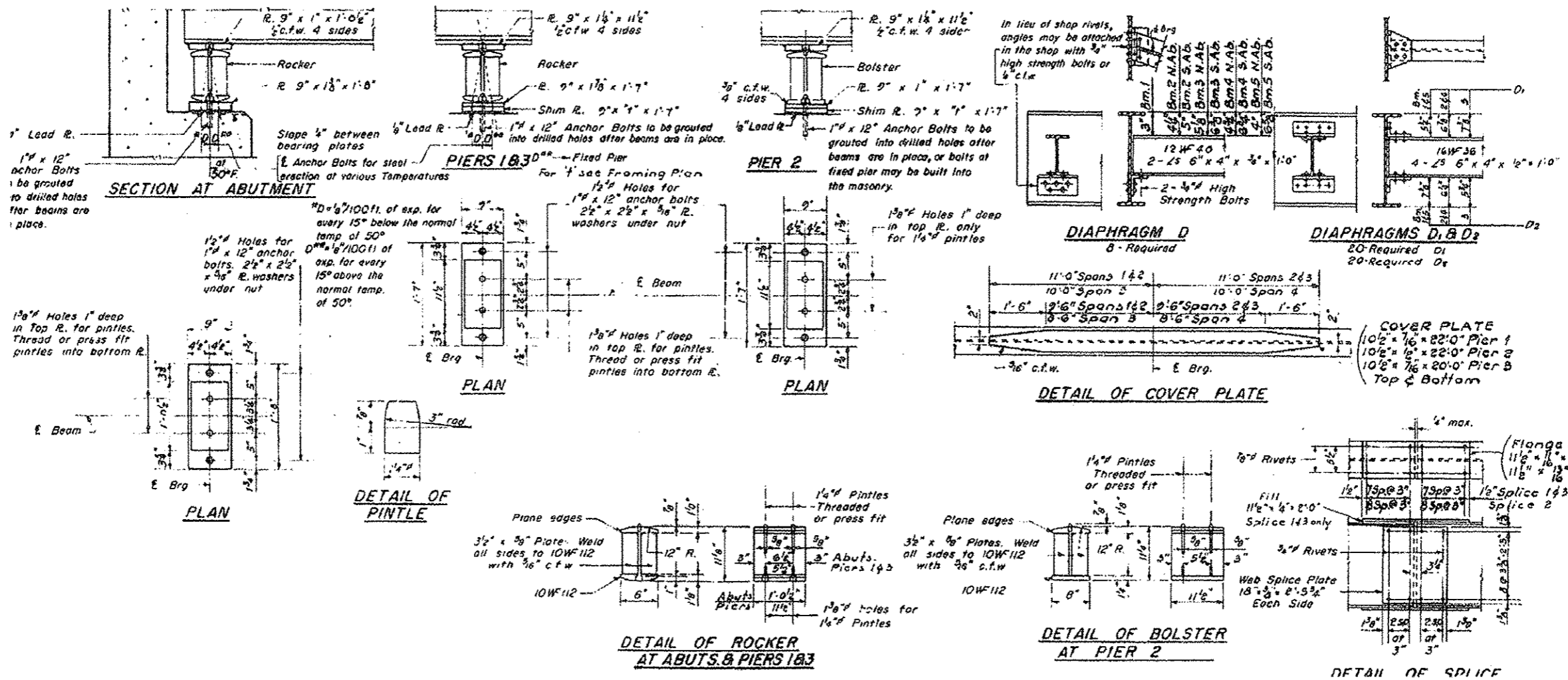
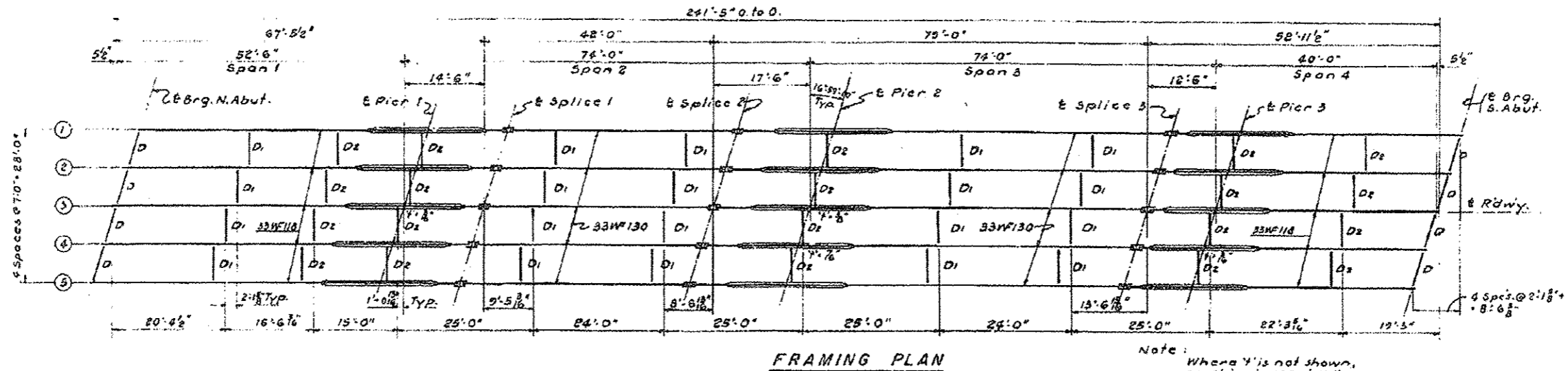
# LOCATION 4 S.N. 048-0035

## INFORMATION ONLY



FILE NAME April 2013 bridge painting.dgn	USER NAME TOM INGLIS	DESIGNED TOM INGLIS	REVISED -	<b>STATE OF ILLINOIS</b>	<b>LOCATION 4 PLAN VIEW</b>	F.A. RTE. VAR	SECTION D4 BRIDGE PAINTING 2012	COUNTY various	TOTAL SHEETS 21	SHEET NO. 12
Default	PLOT SCALE 48.0000" / in.	CHECKED NICK JACK	REVISED -	<b>DEPARTMENT OF TRANSPORTATION</b>	SCALE: N/A	SHEET	OF	SHEETS	STA.	TO STA.
	PLOT DATE 2/22/2013	DATE 2/6/13	REVISED -							
CONTRACT NO. 68B26 ILLINOIS FED. AID PROJECT										

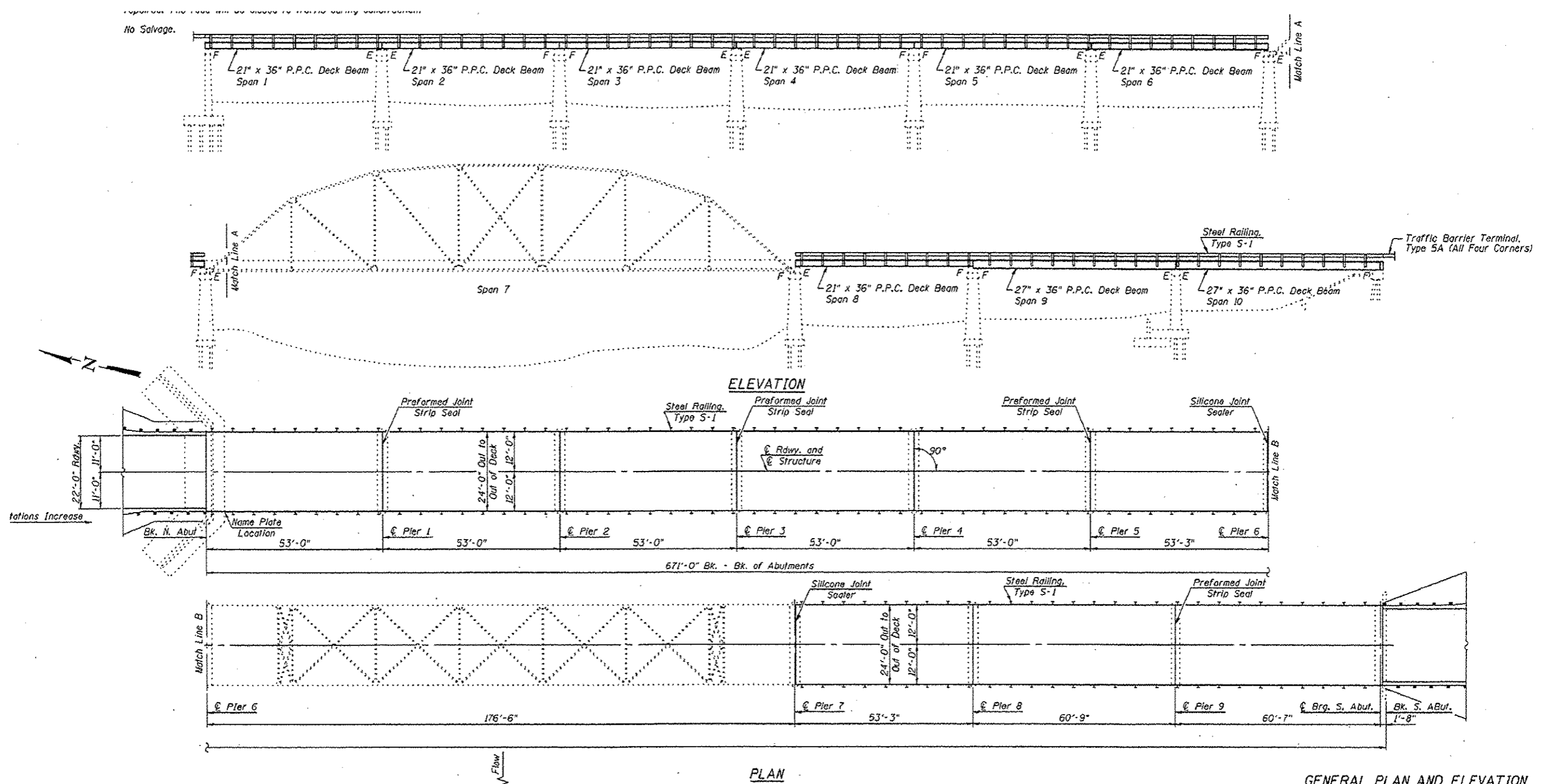
# LOCATION 4 S.N. 048-0035 INFORMATION ONLY



FILE NAME:	USER NAME: TOM INGLIS	DESIGNED: TOM INGLIS	REVISED:	<b>STATE OF ILLINOIS DEPARTMENT OF TRANSPORTATION</b>	<b>LOCATION 4 FRAMING PLAN</b>	F.A. RTE.	SECTION	COUNTY	TOTAL SHEETS	SHEET NO.
April 2013 bridge painting.dgn		DRAWN: TOM INGLIS	REVISED:			VAR	04 BRIDGE PAINTING 2012	various	21	13
Default		CHECKED: NICK JACK	REVISED:							
		DATE: 2/6/13	REVISED:			SCALE: N/A				CONTRACT NO. 68B26
						SHEET	OF	SHEETS	STA.	TO STA.
										ILLINOIS FED. AID PROJECT

# LOCATION 5 S.N. 090-0087

## INFORMATION ONLY

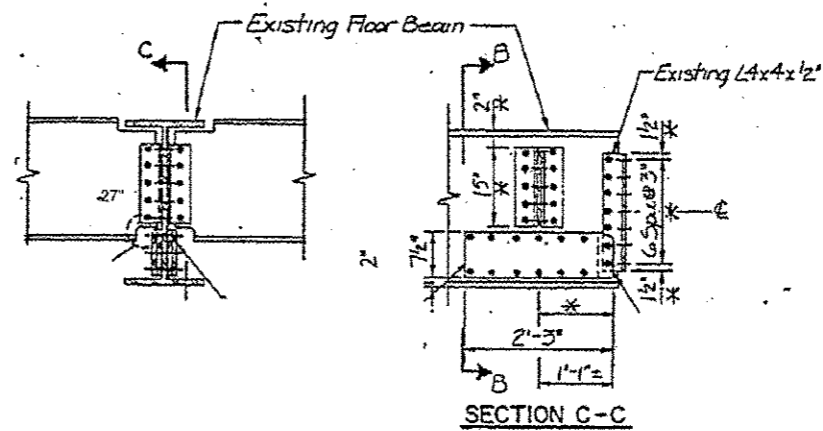
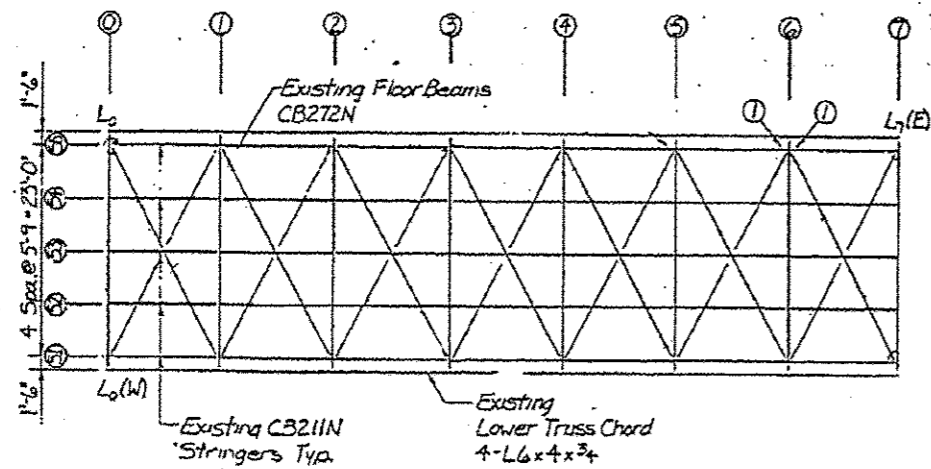
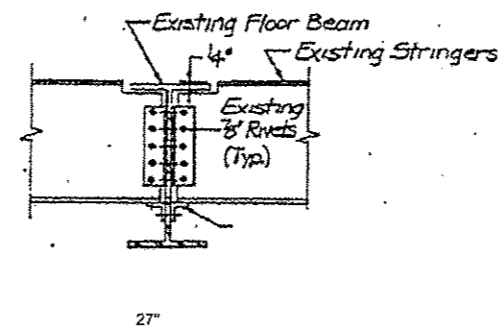
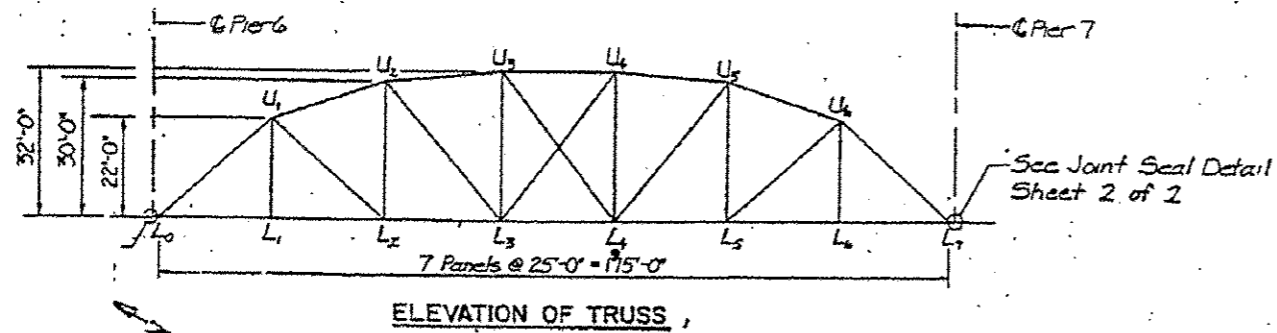


FILE NAME - April 2013 bridge painting.dgn	USER NAME - TOM INGLIS	DESIGNED - TOM INGLIS	REVISED -	<b>STATE OF ILLINOIS DEPARTMENT OF TRANSPORTATION</b>	<b>LOCATION 5 PLAN VIEW</b>	F.A. RTE.	SECTION	COUNTY	TOTAL SHEETS	SHEET NO.	
						VAR	04 BRIDGE PAINTING 2012	various	21	14	
						CONTRACT NO. 68B26					
						[ILLINOIS] FED. AID PROJECT					
Default	PLOT SCALE - 40,0000 1/16"	CHECKED - NICK JACK	REVISIED -	SCALE: N/A		SHEET OF SHEETS		STA. TO STA.			
	PLOT DATE - 2/22/2013	DATE - 2/6/13	REVISIED -								

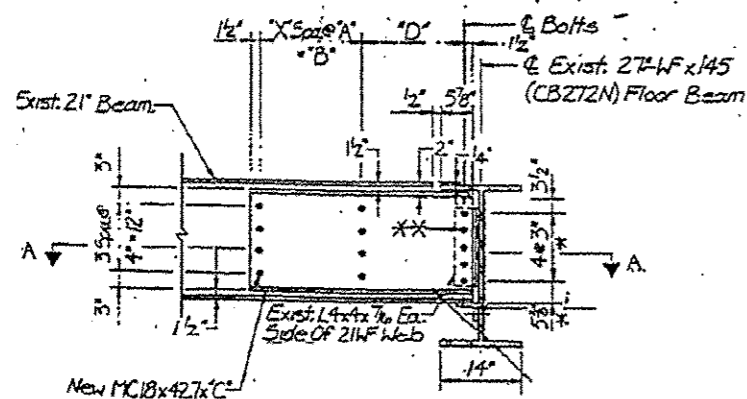


# LOCATION 5 S.N. 090-0087

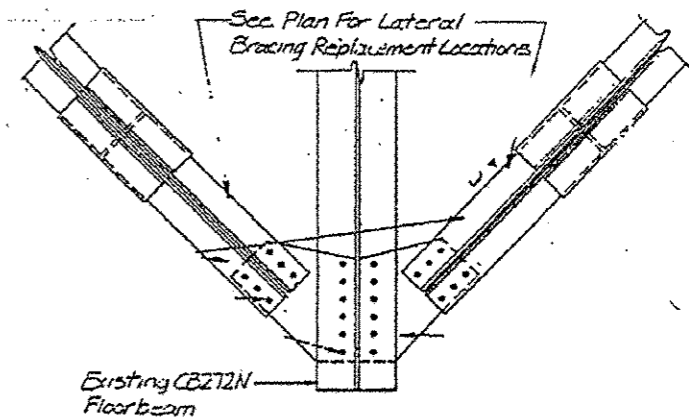
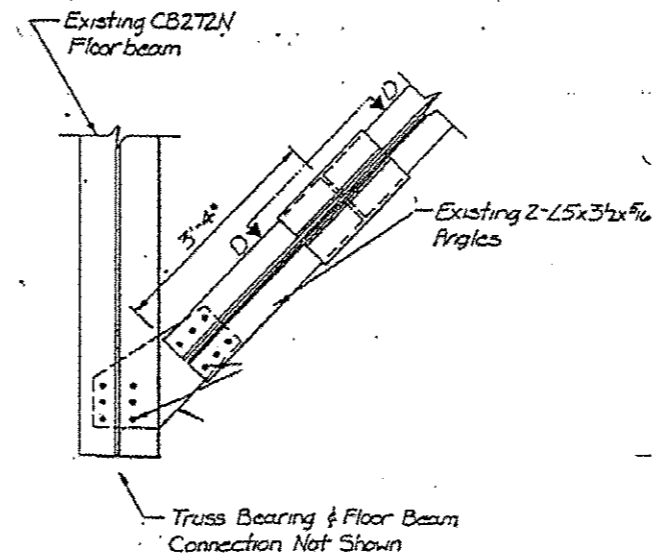
# INFORMATION ONLY



**PLAN OF FLOOR FRAMING**



\* Contractor To Field Verify Or Field Measure Dimensions



FILE NAME : April 2013 bridge painting.dgn	USER NAME : TOM INGLIS	DESIGNED - TOM INGLIS	REVISED -
		DRAWN - TOM INGLIS	REVISED -
		CHECKED - NICK JACK	REVISED -
Default	PLOT DATE : 2/22/2013	DATE - 2/6/13	REVISED -

STATE OF ILLINOIS  
DEPARTMENT OF TRANSPORTATION

LOCATION 5 FRAMING PLAN

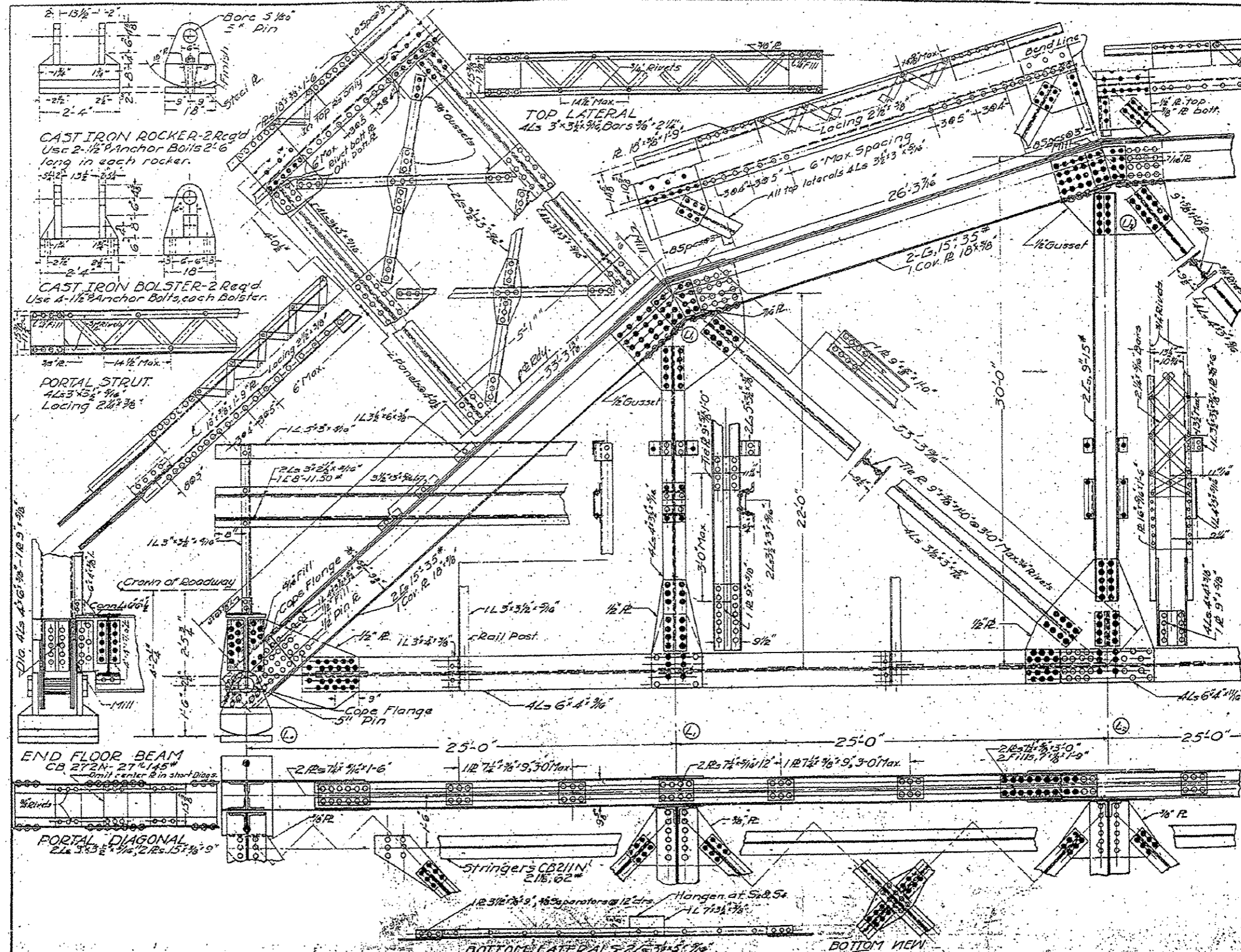
SCALE: N/A SHEET OF SHEETS STA. TO STA.

F.A. RTE.	SECTION	COUNTY	TOTAL SHEETS	SHEET NO.
VAR	D4 BRIDGE PAINTING 2012	various	21	15
CONTRACT NO. 68B26				
[ILLINOIS] FED. AID PROJECT				



# LOCATION 5 S.N. 090-0087

# INFORMATION ONLY



FILE NAME + April 2013 bridge painting.dgn	USER NAME + TOM INGLIS	DESIGNED - TOM INGLIS	REVISED -
Default	PLOT SCALE + 48.0000' / in.	DRAWN - TOM INGLIS	REVISED -
	PLOT DATE + 2/22/2013	CHECKED - NICK JACK	REVISED -
		DATE - 2/6/13	REVISED -

STATE OF ILLINOIS  
DEPARTMENT OF TRANSPORTATION

LOCATION 5 TRUSS DETAILS

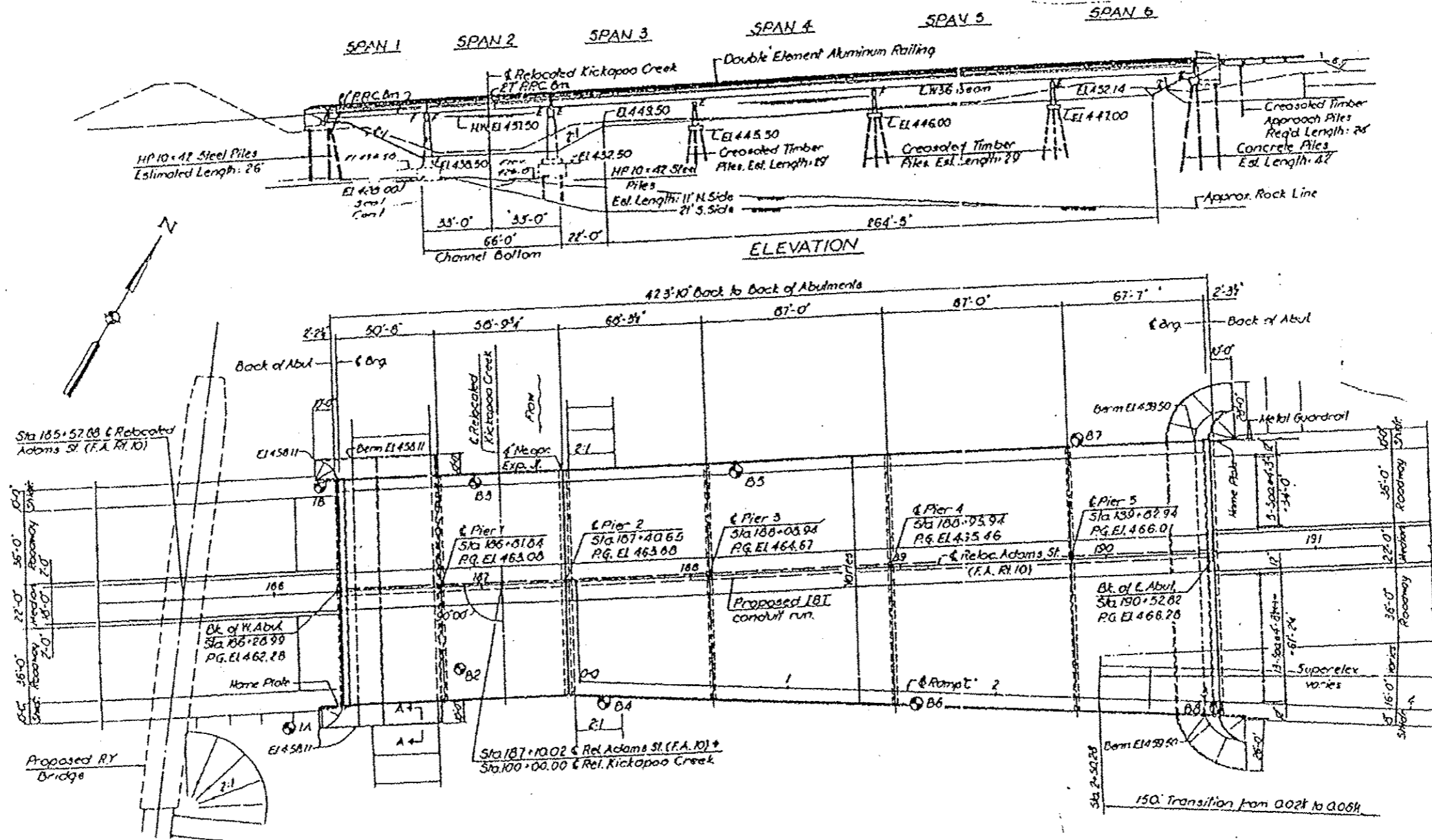
SCALE: N/A SHEET OF SHEETS STA. TO STA.

F.A. RTE.	SECTION	COUNTY	TOTAL SHEETS	SHEET NO.
VAR	D4 BRIDGE PAINTING 2012	VARIOUS	21	16
CONTRACT NO. 68B26				
ILLINOIS FED. AID PROJECT				



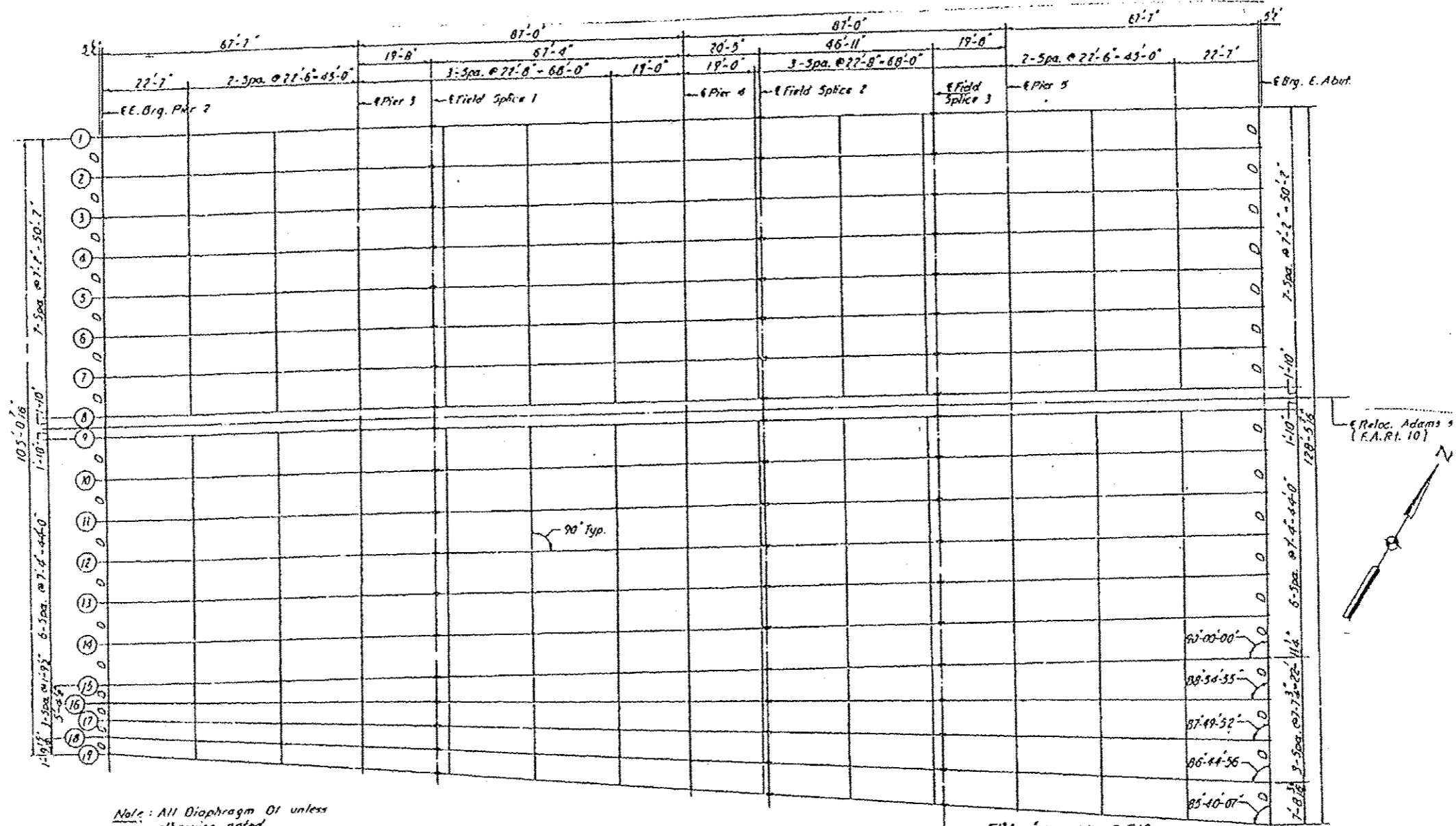
# LOCATION 6 S.N. 072-0134

# INFORMATION ONLY

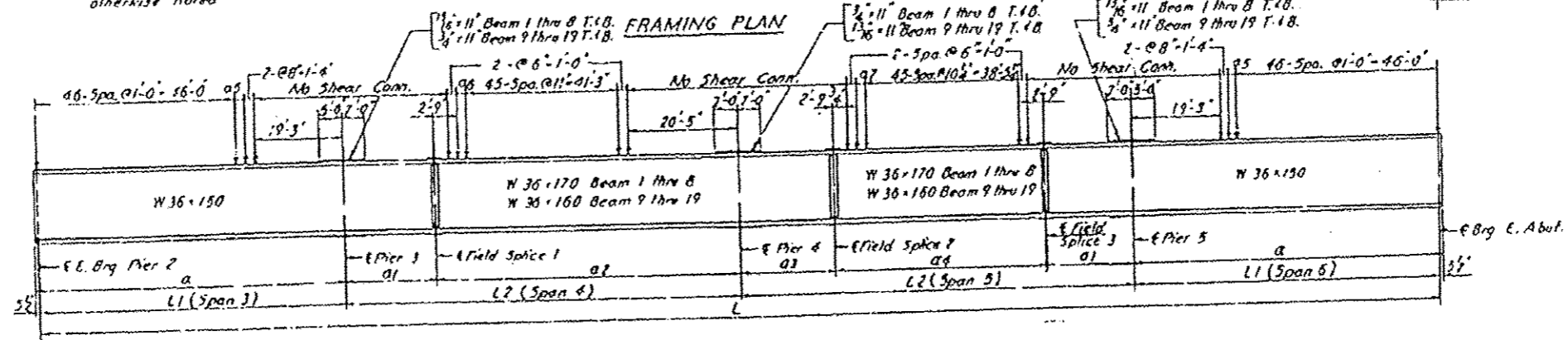


FILE NAME April 2013 bridge painting.dgn	USER NAME	DESIGNED	REVISED	STATE OF ILLINOIS DEPARTMENT OF TRANSPORTATION	LOCATION 5 TRUSS DETAILS	F.A. RTE.	SECTION	COUNTY	TOTAL SHEETS	SHEET NO.
	PLOT SCALE	DRAWN	CHECKED			VAR	D4 BRIDGE PAINTING 2012	VARIOUS	21	18
Default	PLOT DATE	DATE		SCALE: N/A	SHEET OF SHEETS	STA.	TO STA.	CONTRACT NO. 68B26		
								ILLINOIS FED. AID PROJECT		

# LOCATION 6 S.N. 072-0134 INFORMATION ONLY



Note: All Diaphragm OI unless otherwise noted

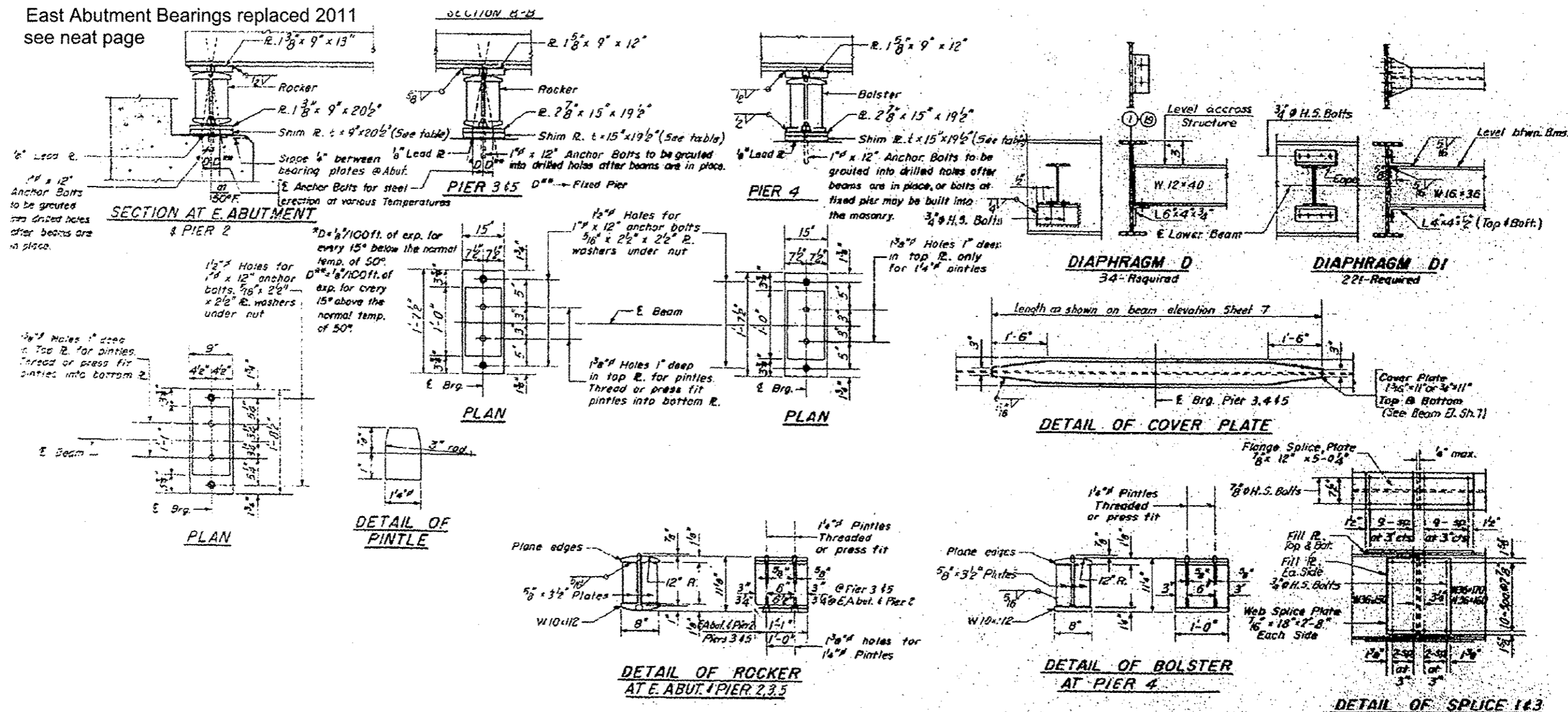


**BEAM ELEVATION**

FILE NAME + April 2813 bridge painting.dgn	USER NAME + TOM INGLIS	DESIGNED - TOM INGLIS	REVISED -	<b>STATE OF ILLINOIS DEPARTMENT OF TRANSPORTATION</b>	<b>LOCATION 5 TRUSS DETAILS</b>	F.A. RTE. VAR	SECTION D4 BRIDGE PAINTING 2012	COUNTY VARIOUS	TOTAL SHEETS 21	SHEET NO. 19
Default	PLOT SCALE + 48.0000 / in.	CHECKED - NICK JACK	REVISED -	SCALE: N/A	SHEET OF SHEETS STA. TO STA.	CONTRACT NO. 68B26 ILLINOIS FED. AID PROJECT				
	PLOT DATE + 2/22/2013	DATE - 2/6/13	REVISED -							

# LOCATION 6 S.N. 072-0134 INFORMATION ONLY

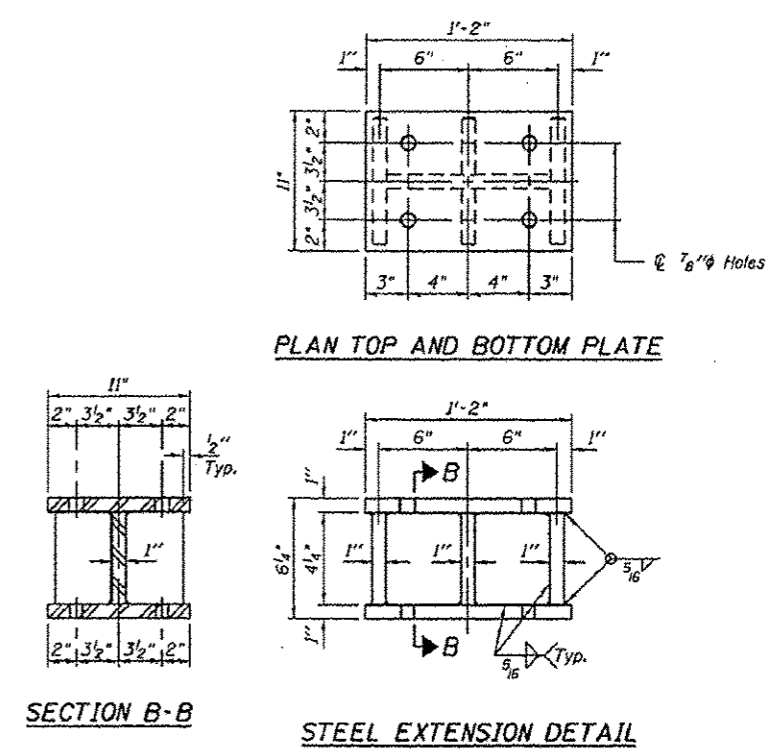
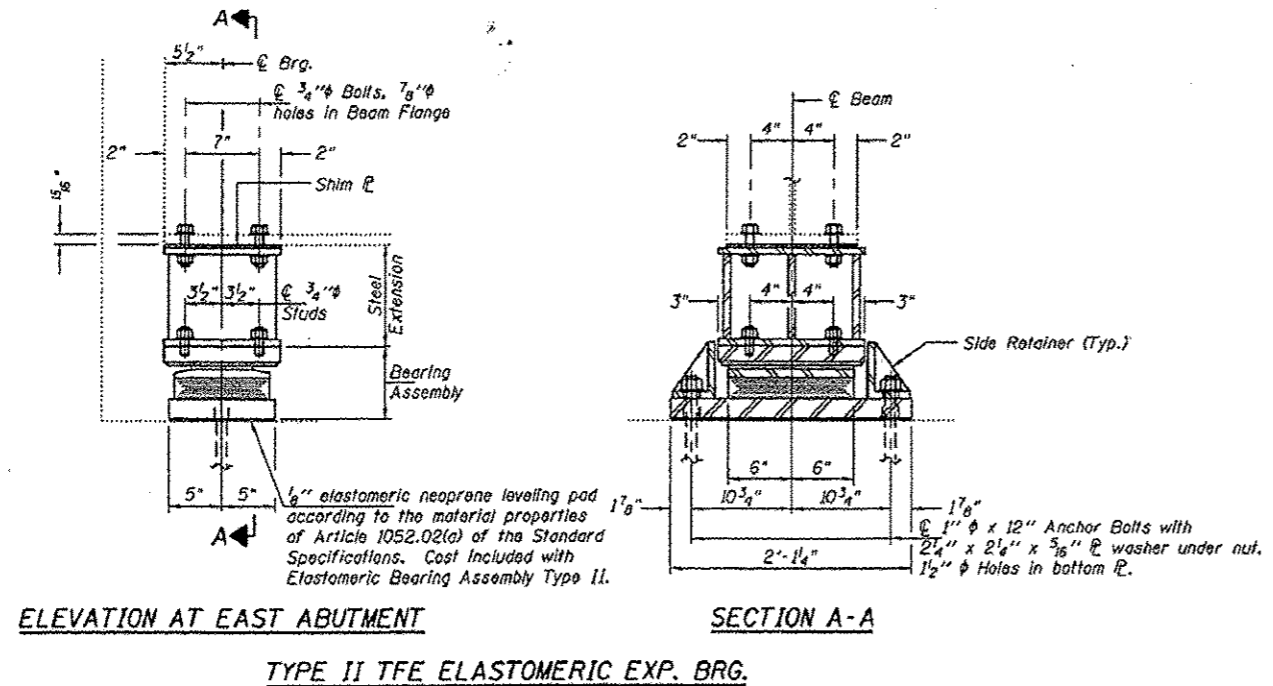
East Abutment Bearings replaced 2011  
see neat page



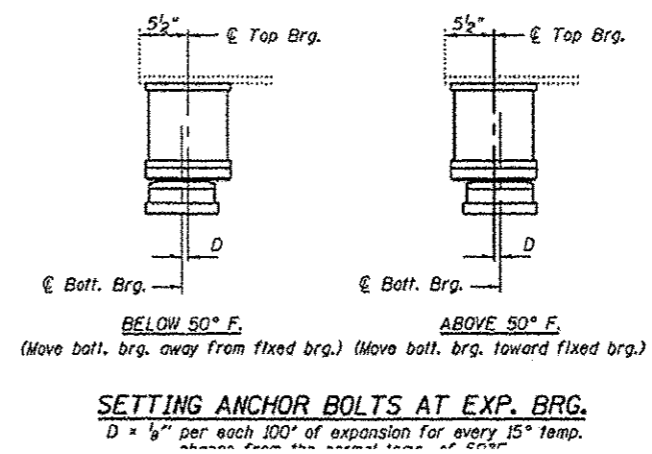
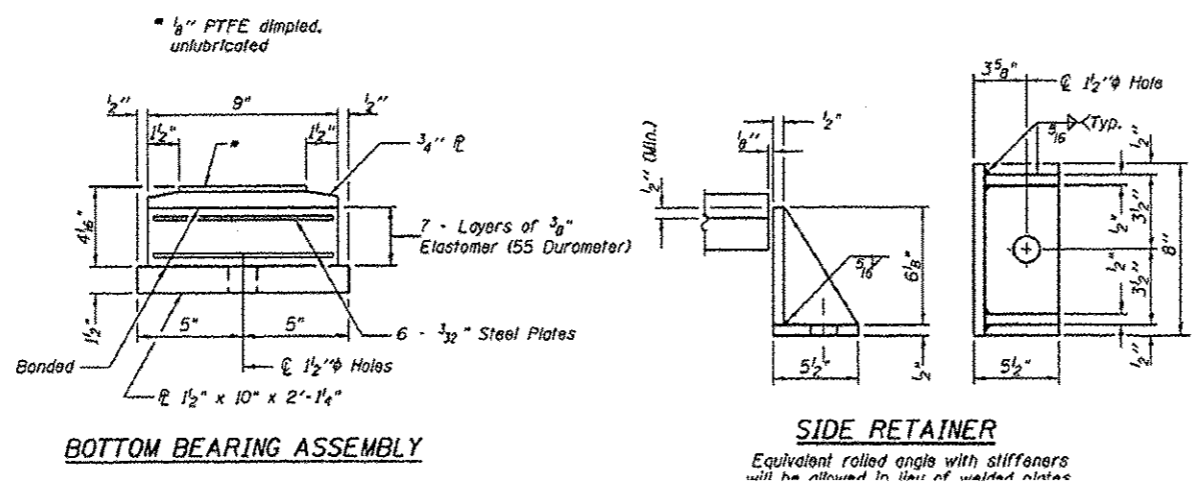
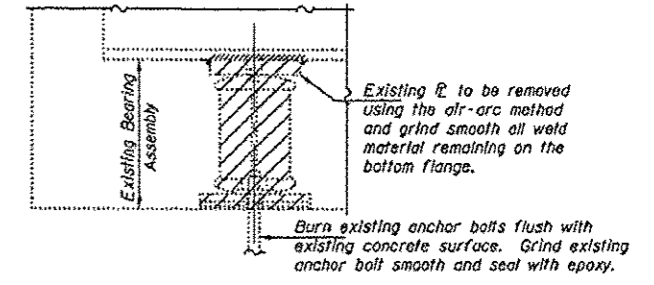
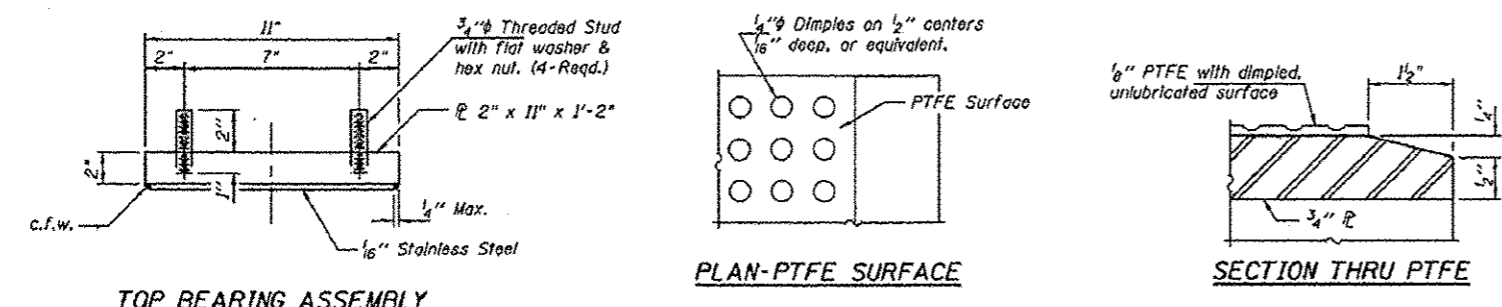
FILE NAME April 2013 bridge painting.dgn	USER NAME TOM INGLIS	DESIGNED TOM INGLIS	REVISED	STATE OF ILLINOIS DEPARTMENT OF TRANSPORTATION	LOCATION 5 TRUSS DETAILS	F.A. RTE.	SECTION	COUNTY	TOTAL SHEETS	SHEET NO.	
Default	PLOT SCALE 1/4" = 1'-0"	CHECKED NICK JACK	REVISED	SCALE: N/A	SHEET OF SHEETS	VAR	D4 BRIDGE PAINTING 2012	VARIOUS	21	20	
	PLOT DATE 2/22/2013	DATE 2/6/13	REVISED	TO STA.	TO STA.				CONTRACT NO. 68B26		
							ILLINOIS FED. AID PROJECT				



# LOCATION 6 S.N. 072-0134 INFORMATION ONLY



New East Abutment Bearings replaced 2011



**BILL OF MATERIAL**

Item	Unit	Total
Elastomeric Bearing Assembly, Type II	Each	19
Jack and Remove Existing Bearings	Each	19
Furnishing and Erecting Structural Steel	Pound	2,710
Anchor Bolts 1"φ	Each	38