

SUMMARY OF QUANTITIES

LOCATION OF WORK: FAP ROUTE 840 (IL 49)
VERMILION COUNTY
S.N. 092-0171 - STA 211+11.00
STA. 209+07.70 to 212+85.71
RURAL
FUNDING BREAKOUT: 80% FEDERAL
20% STATE
CONSTRUCTION TYPE CODE: **M233**
0014

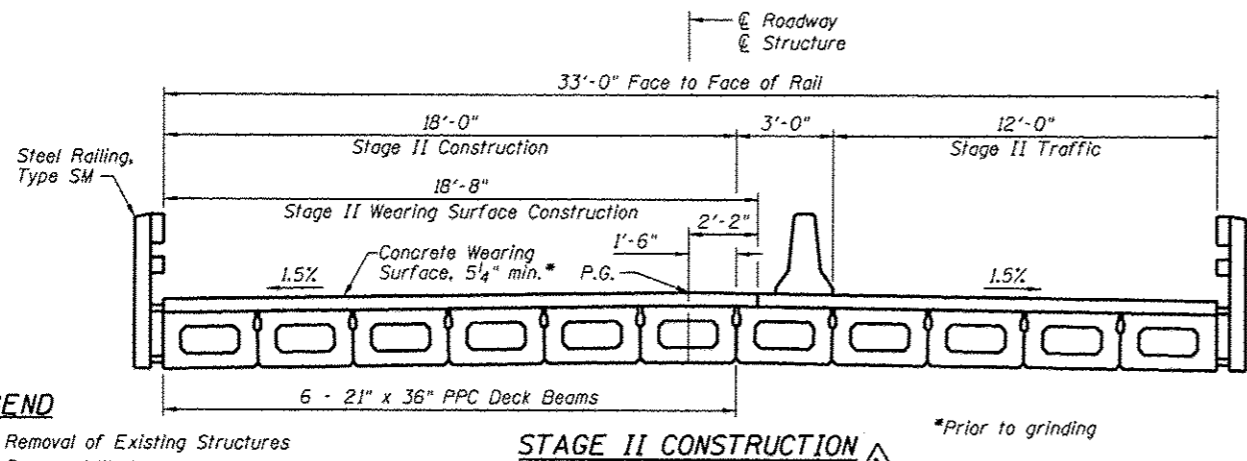
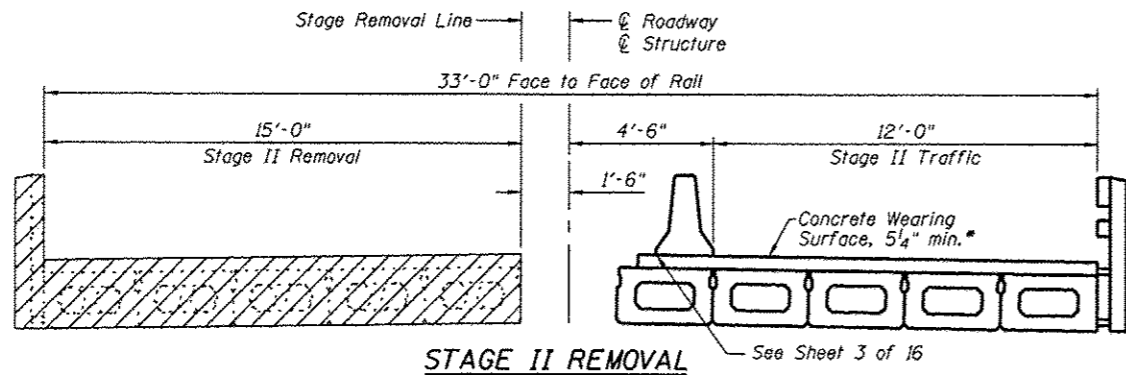
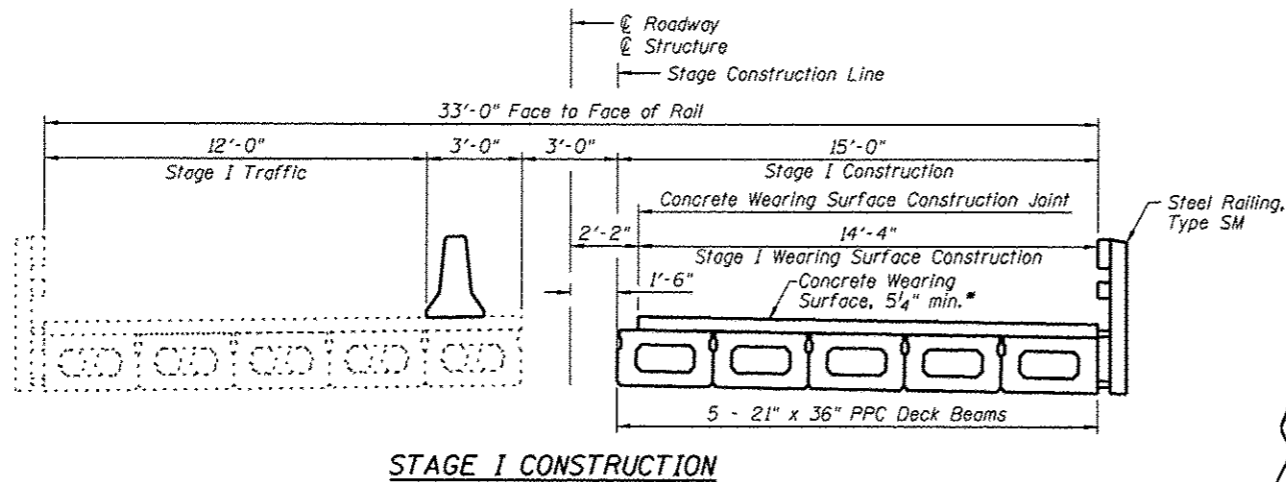
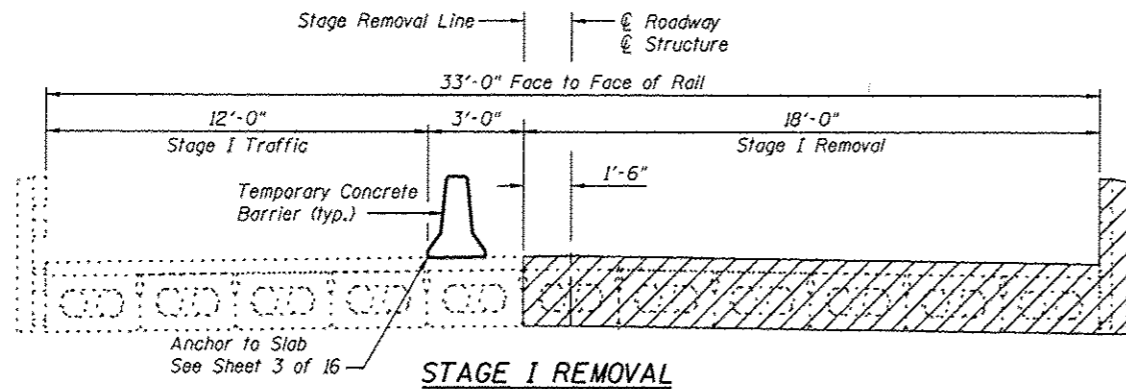
LOCATION OF WORK: FAP ROUTE 840 (IL 49)
VERMILION COUNTY
S.N. 092-0171 - STA 211+11.00
STA. 209+07.70 to 212+85.71
RURAL
FUNDING BREAKOUT: 80% FEDERAL
20% STATE
CONSTRUCTION TYPE CODE: **M233**
0014

CODE NO	ITEM	UNIT	TOTAL QUANTITY
20200100	EARTH EXCAVATION	CU YD	60
20400800	FURNISHED EXCAVATION	CU YD	125
* 25000210	SEEDING, CLASS 2A	ACRE	0.25
* 25000400	NITROGEN FERTILIZER NUTRIENT	POUND	27
* 25000500	PHOSPHORUS FERTILIZER NUTRIENT	POUND	27
* 25000600	POTASSIUM FERTILIZER NUTRIENT	POUND	27
* 25100115	MULCH, METHOD 2	ACRE	0.25
* 25100630	EROSION CONTROL BLANKET	SQ YD	1083
28000250	TEMPORARY EROSION CONTROL SEEDING	POUND	30
28000305	TEMPORARY DITCH CHECKS	FOOT	40
28100109	STONE RIPRAP, CLASS A5	SQ YD	609
28200200	FILTER FABRIC	SQ YD	609
40600100	BITUMINOUS MATERIALS (PRIME COAT)	GALLON	5
42001430	BRIDGE APPROACH PAVEMENT CONNECTOR (FLEXIBLE)	SQ YD	44

CODE NO	ITEM	UNIT	TOTAL QUANTITY
44000100	PAVEMENT REMOVAL	SQ YD	114
50101500	REMOVAL OF EXISTING SUPERSTRUCTURES	EACH	1
50102400	CONCRETE REMOVAL	CU YD	4.0
50300225	CONCRETE STRUCTURES	CU YD	22.0
50300255	CONCRETE SUPERSTRUCTURE	CU YD	103.0
50300260	BRIDGE DECK GROOVING	SQ YD	554
50300300	PROTECTIVE COAT	SQ YD	554
50400405	PRECAST PRESTRESSED CONCRETE DECK BEAMS (21" DEPTH)	SQ FT	2996
50800205	REINFORCEMENT BARS, EPOXY COATED	POUND	33200
50800515	BAR SPLICERS	EACH	314
50901050	STEEL RAILING, TYPE SM	FOOT	242
51500100	NAME PLATES	EACH	1
52000110	PREFORMED JOINT STRIP SEAL	FOOT	71
59000200	EPOXY CRACK INJECTION	FOOT	25

⚠ REVISÉD 4-17-13

FILE NAME: c:\p\work\p\dot\grazianoja\09128114\70615-ent-sq.dgn	USER NAME: grazianoja	DESIGNED: -	REVISED: -	STATE OF ILLINOIS DEPARTMENT OF TRANSPORTATION	SUMMARY OF QUANTITIES			F.A.P. RTE: 840	SECTION: 1208R-1	COUNTY: VERMILION	TOTAL SHEETS: 3	SHEET NO.: 3
PLOT SCALE: 40.0000 / 1"	CHECKED: -	REVISÉD: -	REVISÉD: -		SCALE: -	SHEET NO. 1 OF 3 SHEETS	STA. -	TO STA. -	CONTRACT NO. 70615			
PLOT DATE: 10/12/2012	DATE: 09-24-12	REVISÉD: -	REVISÉD: -		ILLINOIS FED. AID PROJECT							



LEGEND
 [Hatched Box] Removal of Existing Structures
 [Solid Box] Proposed Work

REVISIONS
 1 REVISED 4-17-13

GENERAL NOTES

Reinforcement bars shall conform to the requirements of ASTM A 706 Gr 60.
 Reinforcement bars designated (E) shall be epoxy coated.
 Plan dimensions and details relative to existing plans are subject to nominal construction variations. The Contractor shall field verify existing dimensions and details affecting new construction and make necessary approved adjustments prior to construction or ordering of materials. Such variations shall not be cause for additional compensation for a change in scope of the work, however, the Contractor will be paid for the quantity actually furnished at the unit price bid for the work.
 Layout of slope protection system may be varied to suit ground conditions in the field as directed by the Engineer.
 The Contractor is advised that the existing PPC Deck Beams are in a deteriorated condition with reduced load carrying capacity. It is the Contractor's responsibility to account for the condition of the beams when developing construction procedures for removal and replacement of the superstructure.

If the Contractor's procedure for existing beam removal and placement of new beams involves placement of cranes or other heavy equipment on existing or new beams, a detailed procedure shall be submitted to the Engineer for approval. The procedure shall include calculations, prepared and sealed by an Illinois Licensed Structural Engineer, verifying that the equipment and procedure used will not overstress the existing or new beams. To distribute load to multiple beams and protect the concrete, in all cases a double layer mat of heavy timbers shall be used at all times under crane tracks or wheels and any outriggers in the down position. If necessary, shims shall be used under the crane mat to ensure uniform contact with the underlying beams. Prior to placement of the timber mats on new beams, the following shall be done: placement and tightening of transverse tie assemblies, grouting and curing the dowel rods 24 hours minimum and grouting and curing the shear keys.

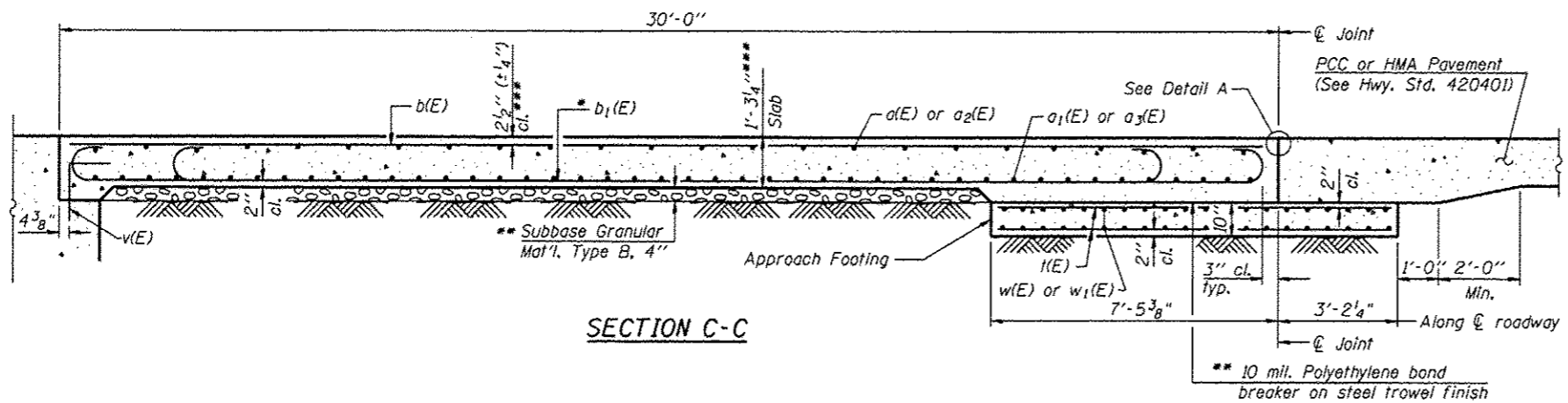
TOTAL BILL OF MATERIAL

ITEM	UNIT	SUPER	SUB	TOTAL
Stone Riprap, Class A5	Sq Yd	0	342	342
Filter Fabric	Sq Yd	0	342	342
Removal Of Existing Superstructures	Each	1	0	1
Concrete Removal	Cu Yd	0	4	4
Concrete Structures	Cu Yd	0	22	22
Concrete Superstructure	Cu Yd	103	0	103
Bridge Deck Grooving	Sq Yd	554	0	554
Protective Coat	Sq Yd	554	0	554
Precast Prestressed Concrete Deck Beams (21" Depth)	Sq Ft	2,996	0	2,996
Reinforcement Bars, Epoxy Coated	Pound	29,360	3,840	33,200
Bar Splicers	Each	234	80	314
Steel Railing, Type Sm	Foot	242	0	242
Name Plates	Each	1	0	1
Preformed Joint Strip Seal	Foot	71	0	71
Epoxy Crack Injection	Foot	0	25	25
Concrete Wearing Surface, 5"	Sq Yd	334	0	334
Asbestos Bearing Pad Removal	Each	0	44	44
Structural Repair Of Concrete (Depth Equal To Or Less Than 5 Inches)	Sq Ft	0	106	106
Diamond Grinding (Bridge Section)	Sq Yd	554	0	554
Permanent Bench Marks	Each	0	1	1

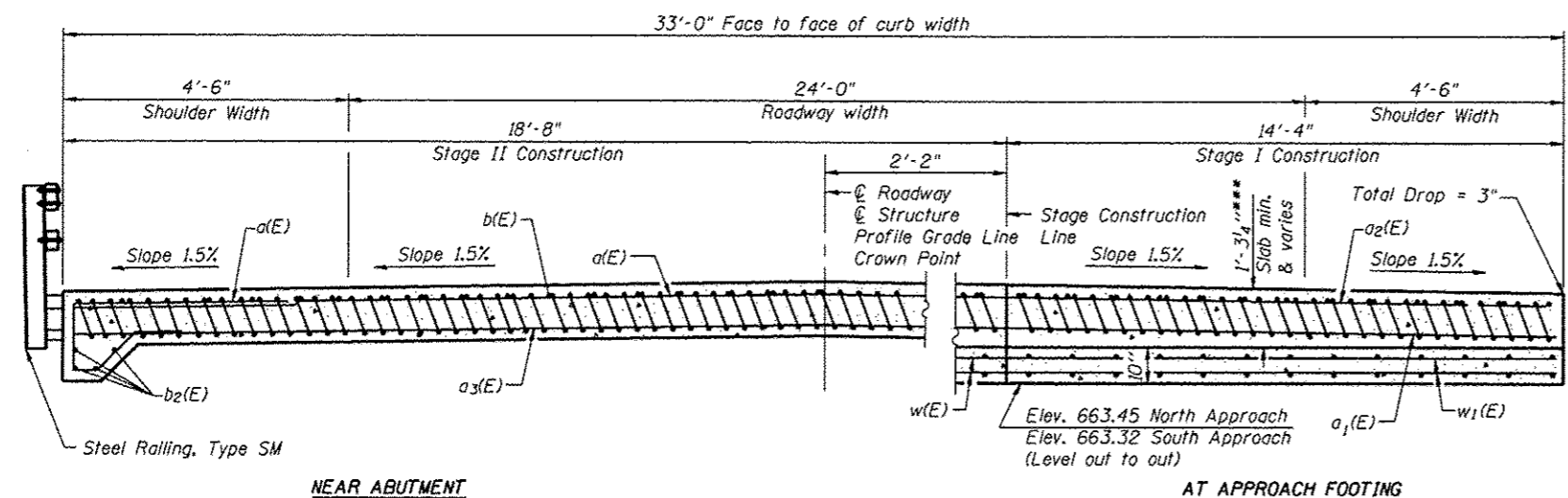
Quantity limits for Stone Riprap, Class A5 and Filter Fabric are shown on Sheet 1 of 16.
 See Roadway Plans Approach Slab Removal Quantity.

Notes:
 All cross sections are looking north.
 See Roadway Plans for quantity of temporary concrete barrier.
 Removal of existing bridge railing existing wearing surface, existing expansive materials, and existing abandoned utility line are included in Removal of Existing Superstructures.
 See Recurring Special Provisions Check Sheet #32 for asbestos bearing pad removal.

FILE NAME: H:\9228171-014.dwg



Notes:
 See sheet 7 of 16 for Detail A.
 Approach slab concrete shall be paid for as Concrete Superstructure.
 Approach footing concrete shall be paid for as Concrete Structures.
 Reinforcement shall be paid for as Reinforcement Bars, Epoxy Coated.
 For v(E) bar details, see sheet 12 of 16.
 The approach footing maximum applied service bearing pressure (Qmax) = 2.0 ksf.
 For bar splicer details, see sheet 14 of 16.
 Cost of excavation for approach footing included with Concrete Structures.
 For additional railing details, see sheet 9 of 16.

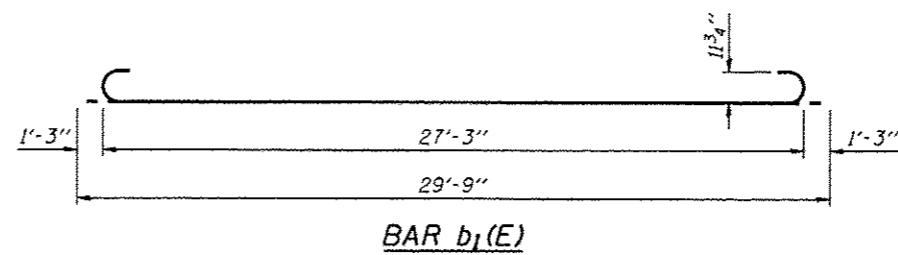
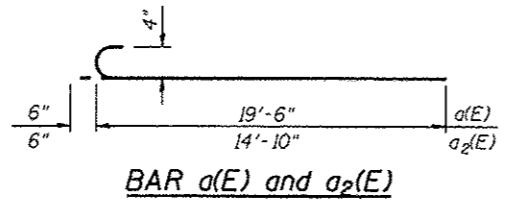
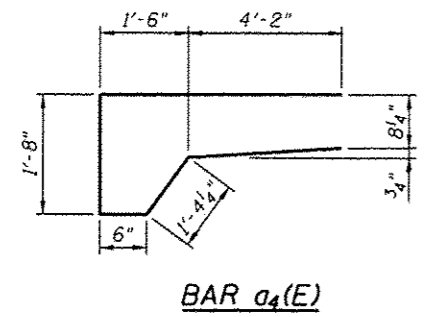


*Tilt #9 b (E) bars as required to maintain clearance.
 **Cost included with Concrete Superstructures.
 ***Prior to grinding.

**TWO APPROACHES
 BILL OF MATERIAL**

Bar	No.	Size	Length	Shape
a(E)	50	#4	20'-0"	—
a1(E)	92	#5	14'-10"	—
a2(E)	50	#4	15'-4"	—
a3(E)	92	#5	19'-6"	—
a4(E)	136	#6	13'-5"	—
b(E)	54	#4	29'-8"	—
b1(E)	156	#9	29'-9"	—
b2(E)	16	#8	20'-8"	—
w(E)	80	#5	16'-9"	—
w1(E)	80	#5	14'-10"	—
Concrete Superstructure		Cu. Yd.	103	
Concrete Structures		Cu. Yd.	22	
Reinforcement Bars, Epoxy Coated		Pound	24,950	****
Reinforcement Bars, Epoxy Coated		Pound	3,570	****

****Included in Superstructure Quantity
 *****Included in Substructure Quantity



REVIS 4-17-13



1170 SOUTH HOBOLT ROAD
 JOLIET, ILLINOIS 60431
 (815) 744-4200
 USER NAME: ryan
 PLOT SCALE: *
 PLOT DATE: 8/3/2011

DESIGNED: RRD
 CHECKED: AJS
 DRAWN: BJF
 CHECKED: AJS

REVISED: -
 REVISED: -
 REVISED: -
 REVISED: -

STATE OF ILLINOIS
 DEPARTMENT OF TRANSPORTATION

BRIDGE APPROACH PAVEMENT (2 OF 2)
 STRUCTURE NO. 092-0171

SHEET NO. 8 OF 16 SHEETS

F.A.P. RTE.	SECTION	COUNTY	TOTAL SHEETS	SHEET NO.
840	120BR-1	VERMILION	44	20

CONTRACT NO. 70615
 ILLINOIS FED. AID PROJECT

FILE NAME: S:\101_45280-6399_031612\024\Micro\1\Info\Structural\B220171-78415-087-840.dgn