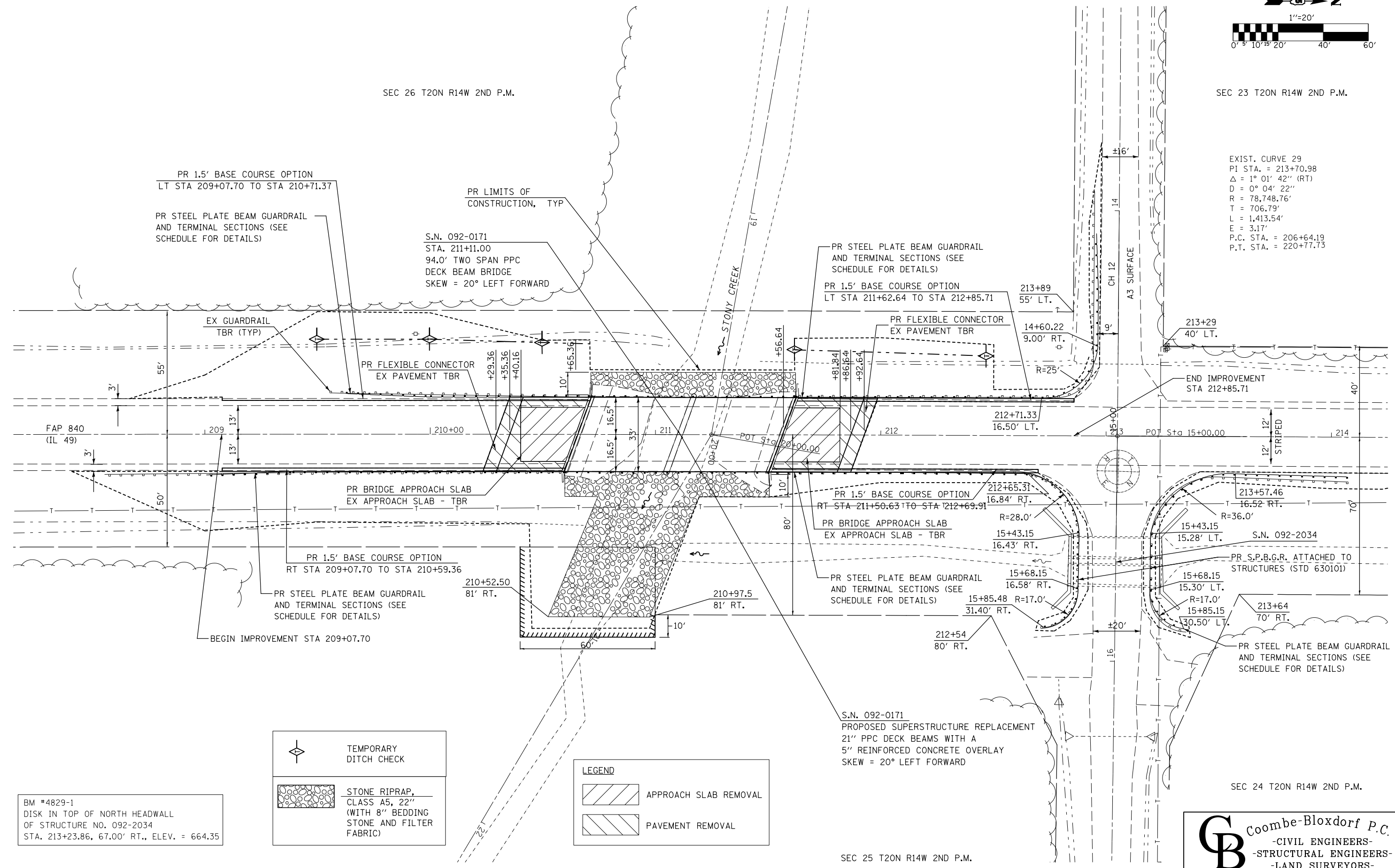


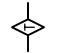
SEC 26 T20N R14W 2ND P.M.

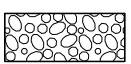
SEC 23 T20N R14W 2ND P.M.

EXIST. CURVE 29
 PI STA. = 213+70.98
 $\Delta = 1^\circ 01' 42''$ (RT)
 $D = 0^\circ 04' 22''$
 $R = 78,748.76'$
 $T = 706.79'$
 $L = 1,413.54'$
 $E = 3.17'$
 P.C. STA. = 206+64.19
 P.T. STA. = 220+77.73

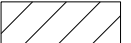


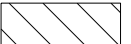
BM #4829-1
 DISK IN TOP OF NORTH HEADWALL
 OF STRUCTURE NO. 092-2034
 STA. 213+23.86, 67.00' RT., ELEV. = 664.35

 TEMPORARY DITCH CHECK

 STONE RIPRAP, CLASS A5, 22" (WITH 8" BEDDING STONE AND FILTER FABRIC)

LEGEND

 APPROACH SLAB REMOVAL

 PAVEMENT REMOVAL

S.N. 092-0171
 PROPOSED SUPERSTRUCTURE REPLACEMENT
 21" PPC DECK BEAMS WITH A
 5" REINFORCED CONCRETE OVERLAY
 SKEW = 20° LEFT FORWARD

SEC 24 T20N R14W 2ND P.M.

SEC 25 T20N R14W 2ND P.M.

CB Coombe-Bloxdorf P.C.
 - CIVIL ENGINEERS -
 - STRUCTURAL ENGINEERS -
 - LAND SURVEYORS -
 Design Firm License No. 184-002703

FILE NAME =	USER NAME = grazianoja	DESIGNED -	REVISED -	STATE OF ILLINOIS DEPARTMENT OF TRANSPORTATION	PLAN				S.N. 092-0171	
et:\pw\work\p\id\dot\grazioja\0128444\0920171\0615-sht-plan.dgn	70615-sht-plan.dgn	DRAWN -	REVISED -		SCALE:					
PLOT SCALE = 40.0000' / in.		CHECKED -	REVISED -		SHEET NO.	OF	SHEETS	STA.		TO STA.
PLOT DATE = 11/13/2012		DATE - / /	REVISED -							
CB PROJECT NO 06027-7									ILLINOIS FED. AID PROJECT	