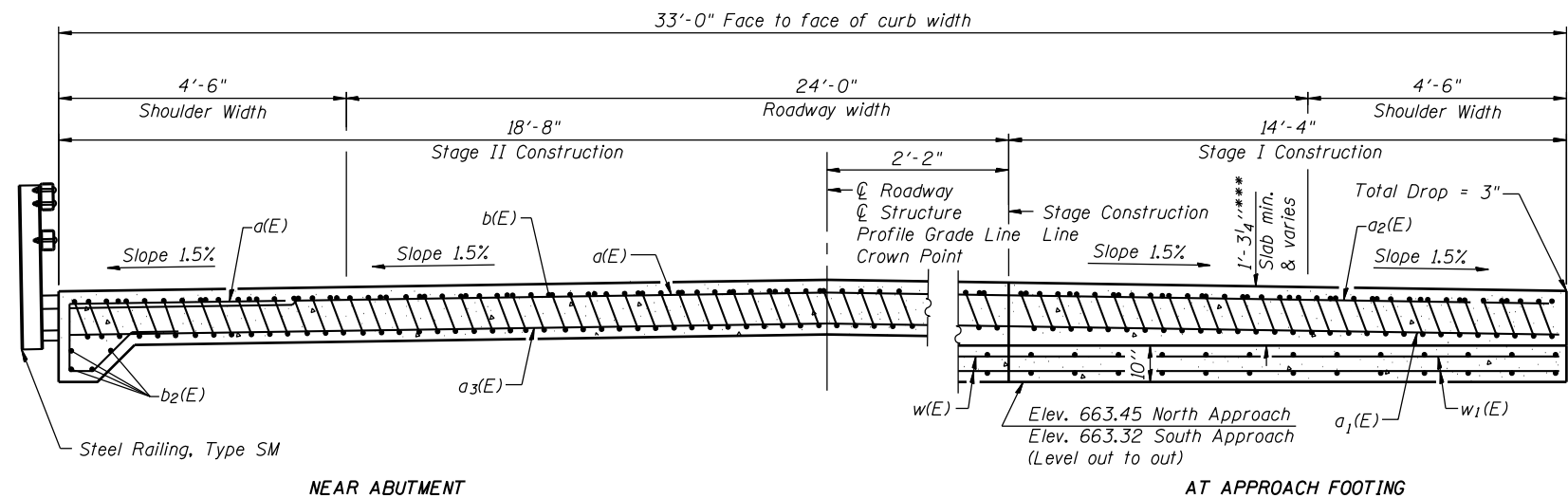


Notes:
 See sheet 7 of 16 for Detail A.
 Approach slab concrete shall be paid for as Concrete Superstructure.
 Approach footing concrete shall be paid for as Concrete Structures.
 Reinforcement shall be paid for as Reinforcement Bars, Epoxy Coated.
 For v(E) bar details, see sheet 12 of 16.
 The approach footing maximum applied service bearing pressure (Omax) = 2.0 ksf.
 For bar splicer details, see sheet 14 of 16.
 Cost of excavation for approach footing included with Concrete Structures.
 For additional railing details, see sheet 9 of 16.



*Tilt #9 b (E) bars as required to maintain clearance.
 **Cost included with Concrete Superstructures.
 ***Prior to grinding.

NEAR ABUTMENT

AT APPROACH FOOTING

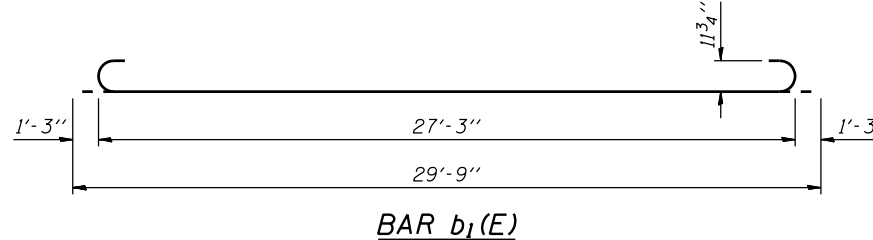
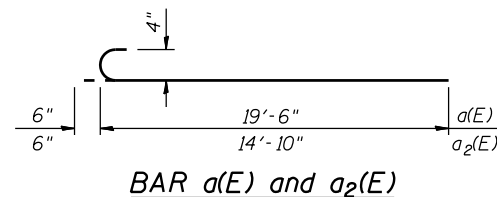
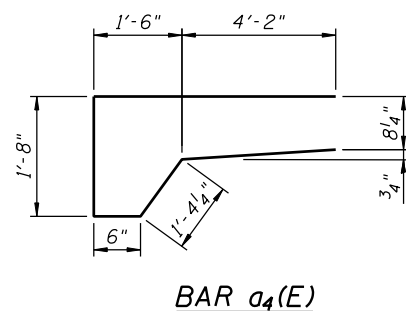
SECTION D-D

(See Plan for dimensions not shown)

**TWO APPROACHES
 BILL OF MATERIAL**

Bar	No.	Size	Length	Shape
a(E)	50	#4	20'-0"	—
a1(E)	92	#5	14'-10"	—
a2(E)	50	#4	15'-4"	—
a3(E)	92	#5	19'-6"	—
a4(E)	136	#6	13'-5"	—
b(E)	54	#4	29'-8"	—
b1(E)	156	#9	29'-9"	—
b2(E)	16	#8	20'-8"	—
t(E)	136	#4	10'-3"	—
w(E)	80	#5	16'-9"	—
w1(E)	80	#5	14'-10"	—
Concrete Superstructure			Cu. Yd.	103
Concrete Structures			Cu. Yd.	22
Reinforcement Bars, Epoxy Coated			Pound	12,640
Reinforcement Bars, Epoxy Coated			Pound	3,570

****Included in Superstructure Quantity
 *****Included in Substructure Quantity



FILE NAME = S:\JOL\63200-63999\6346\024\Microa\Finals\Plans\Structural\0920171-70615-007-BAP.dgn



1170 SOUTH HOUBOLT ROAD JOLIET, ILLINOIS 60431 (815) 744-4200	USER NAME = rjgond	DESIGNED RRD	REVISED -
		CHECKED AJS	REVISED -
	PLOT SCALE =	DRAWN BJF	REVISED -
	PLOT DATE = 8/3/2011	CHECKED AJS	REVISED -

STATE OF ILLINOIS
 DEPARTMENT OF TRANSPORTATION

BRIDGE APPROACH PAVEMENT (2 OF 2)
 STRUCTURE NO. 092-0171

SHEET NO. 8 OF 16 SHEETS

F.A.P. RTE.	SECTION	COUNTY	TOTAL SHEETS	SHEET NO.
840	120BR-1	VERMILION	44	20
CONTRACT NO. 70615				

ILLINOIS FED. AID PROJECT