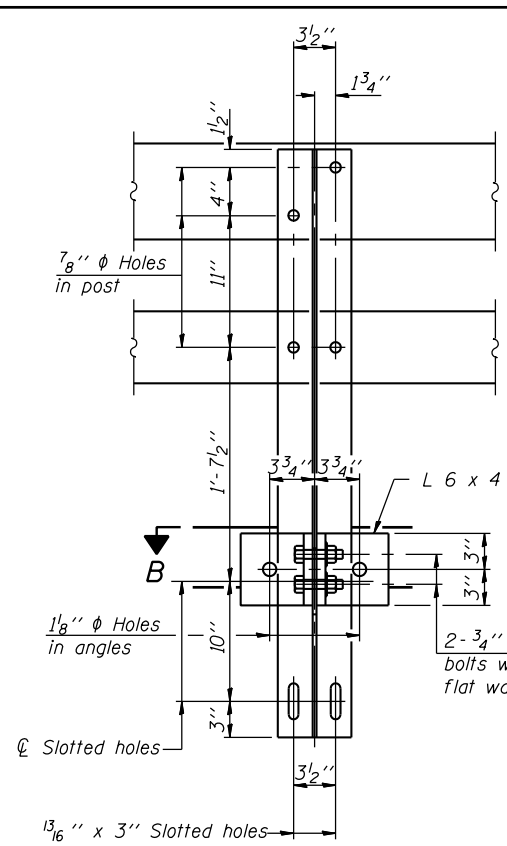
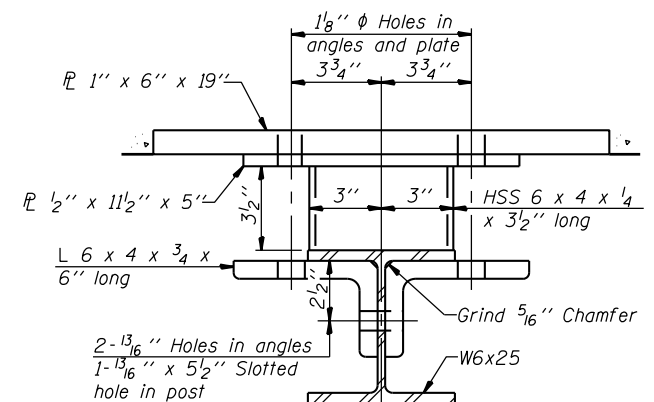


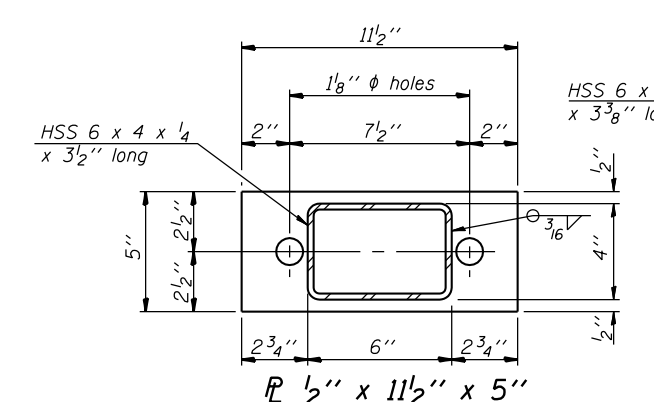
FILE NAME = s:\p1\6380--6395\6346\024\micro\finds\plans\structural\0909-BRRAIL.dgn



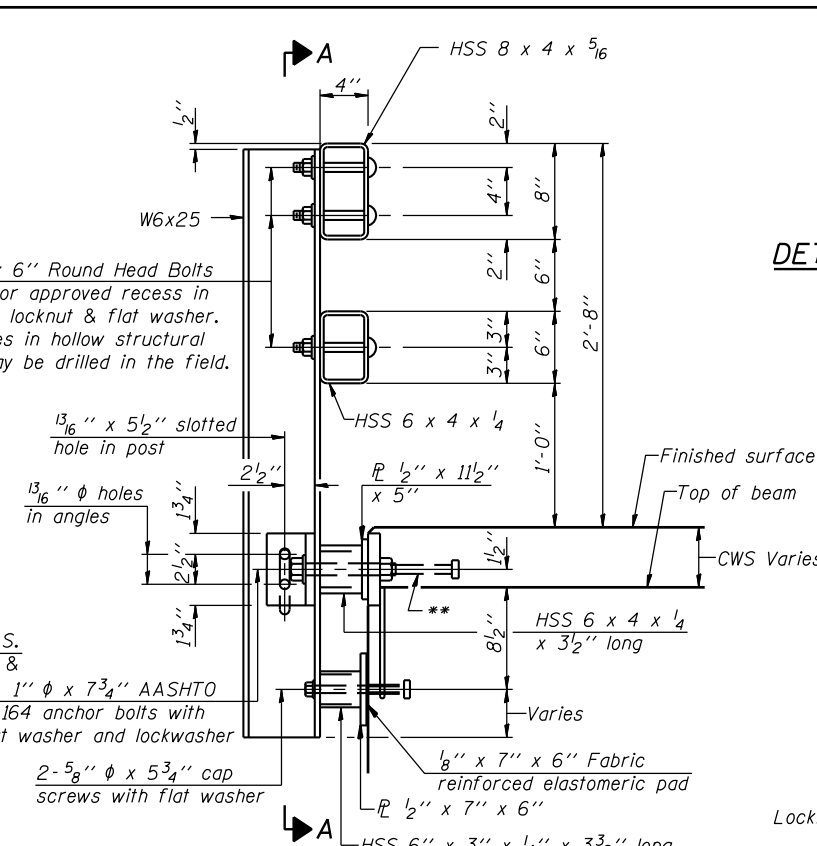
SECTION A-A



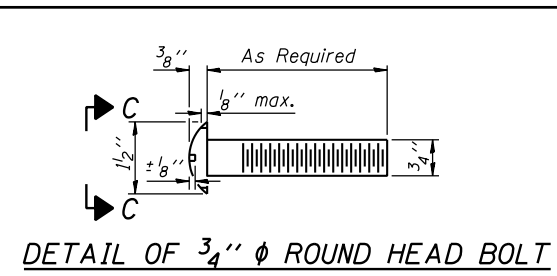
SECTION B-B



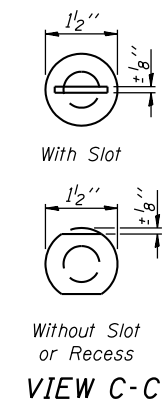
SECTION C-C



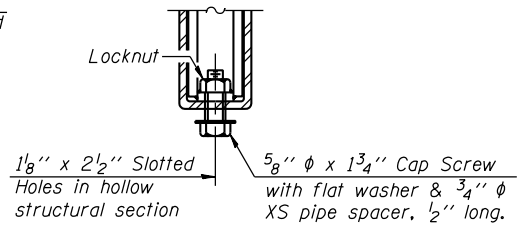
SECTION AT RAIL POST



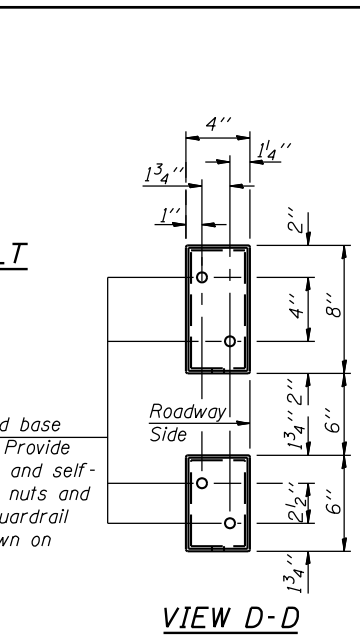
DETAIL OF 3/4" ϕ ROUND HEAD BOLT



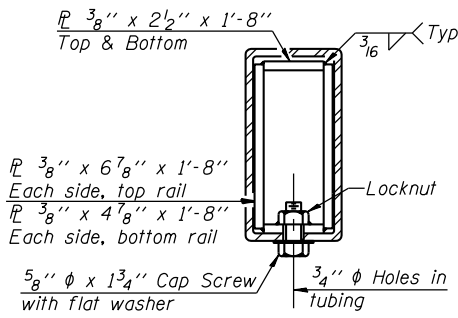
VIEW C-C



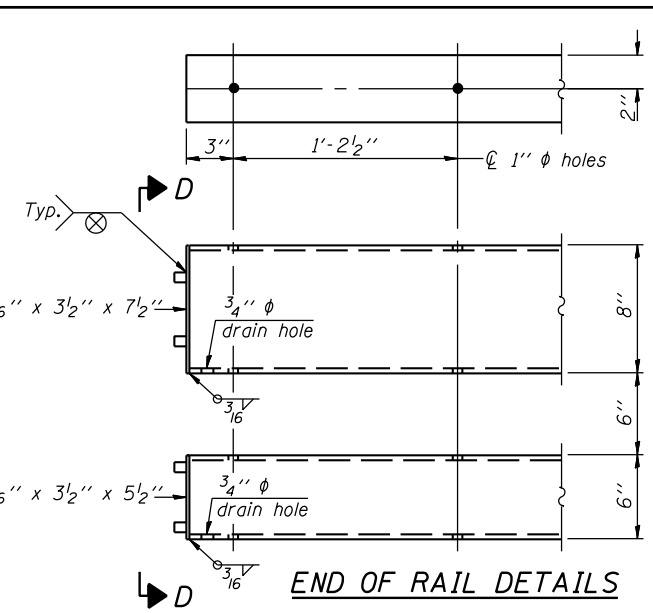
RAIL SPLICE CONNECTION AT EXPANSION JT.



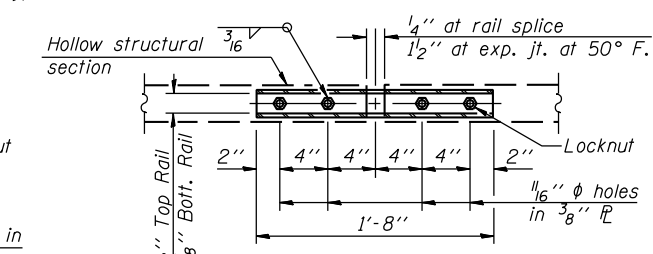
VIEW D-D



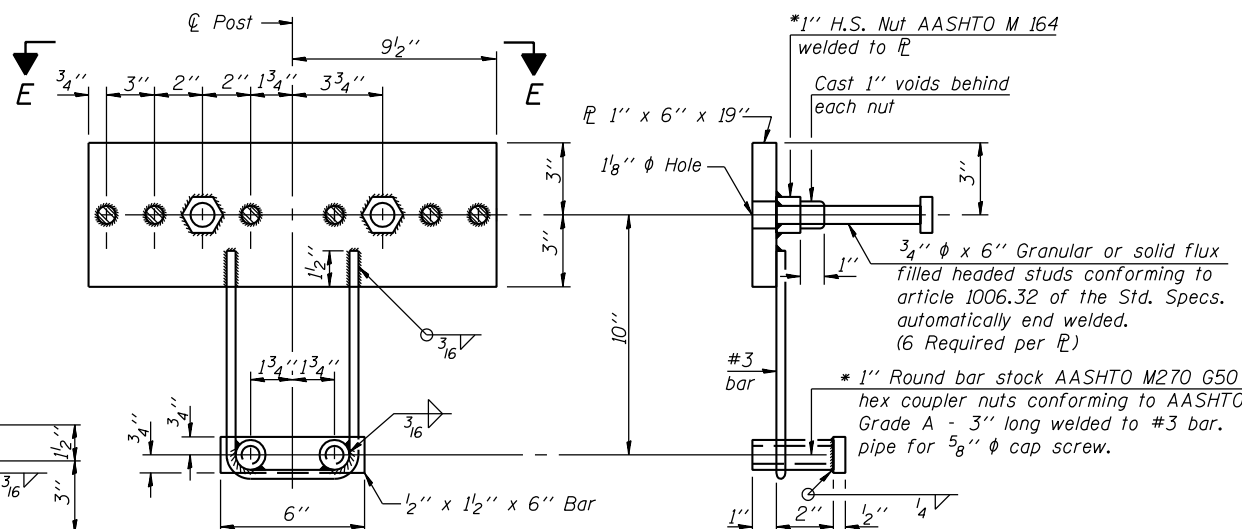
SECTION AT RAIL SPLICE



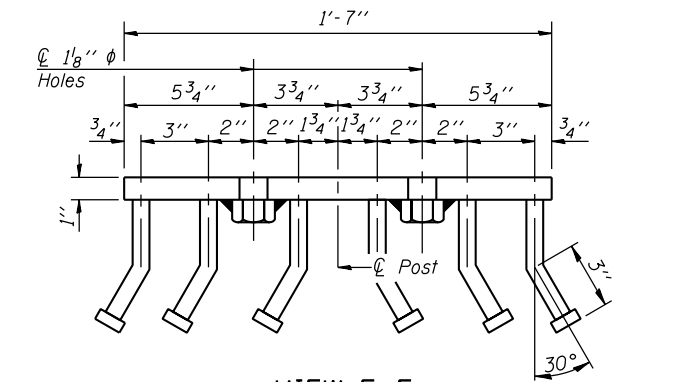
END OF RAIL DETAILS



PLAN-BOTT. SPLICE P TYPICAL



ANCHOR DEVICE



VIEW E-E

Notes:
 All field drilled holes shall be coated with an approved zinc rich paint before erection.
 For multi-span bridges, sufficient 1/4" x 6" x 1'-2" galvanized steel shims shall be provided to align rail between adjacent spans. Cost included with Steel Railing, Type SM.
 Steel rail elements shall be galvanized according to Article 509.05 of the Standard Specifications.
 ** The studs of the anchor devices shall be placed below the top reinforcement bars and the outermost longitudinal reinforcement bar shall be placed directly above the studs of the rail post anchor device.

BILL OF MATERIAL

Item	Unit	Quantity
Steel Railing, Type SM	Foot	242

R-34CWS 7-1-10 (6'-3" Maximum Post Spacing) (5" minimum to 7 1/8" maximum CWS thickness)



USER NAME = rjgnd	DESIGNED RRD	REVISED -
PLOT SCALE =	CHECKED AJS	REVISED -
PLOT DATE = 6/24/2011	DRAWN BJF	REVISED -
	CHECKED AJS	REVISED -

STATE OF ILLINOIS
 DEPARTMENT OF TRANSPORTATION

STEEL RAILING
 STRUCTURE NO. 092-0171
 SHEET NO. 9 OF 16 SHEETS

F.A.P. RTE. 840	SECTION 120BR-1	COUNTY VERMILION	TOTAL SHEETS 44	SHEET NO. 21
CONTRACT NO. 70615				ILLINOIS FED. AID PROJECT