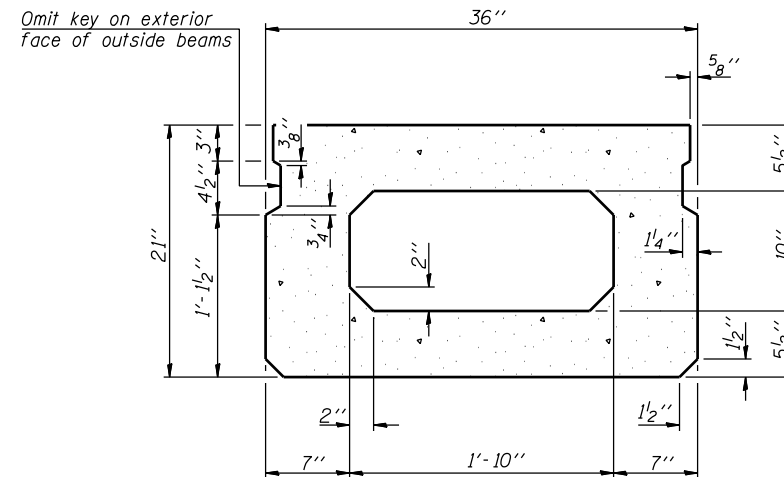
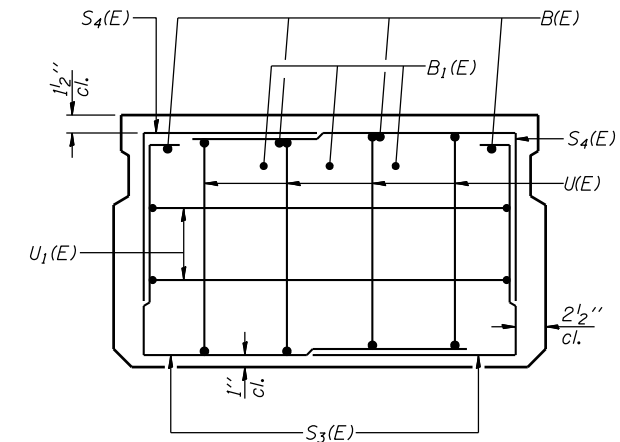


SECTION A-A



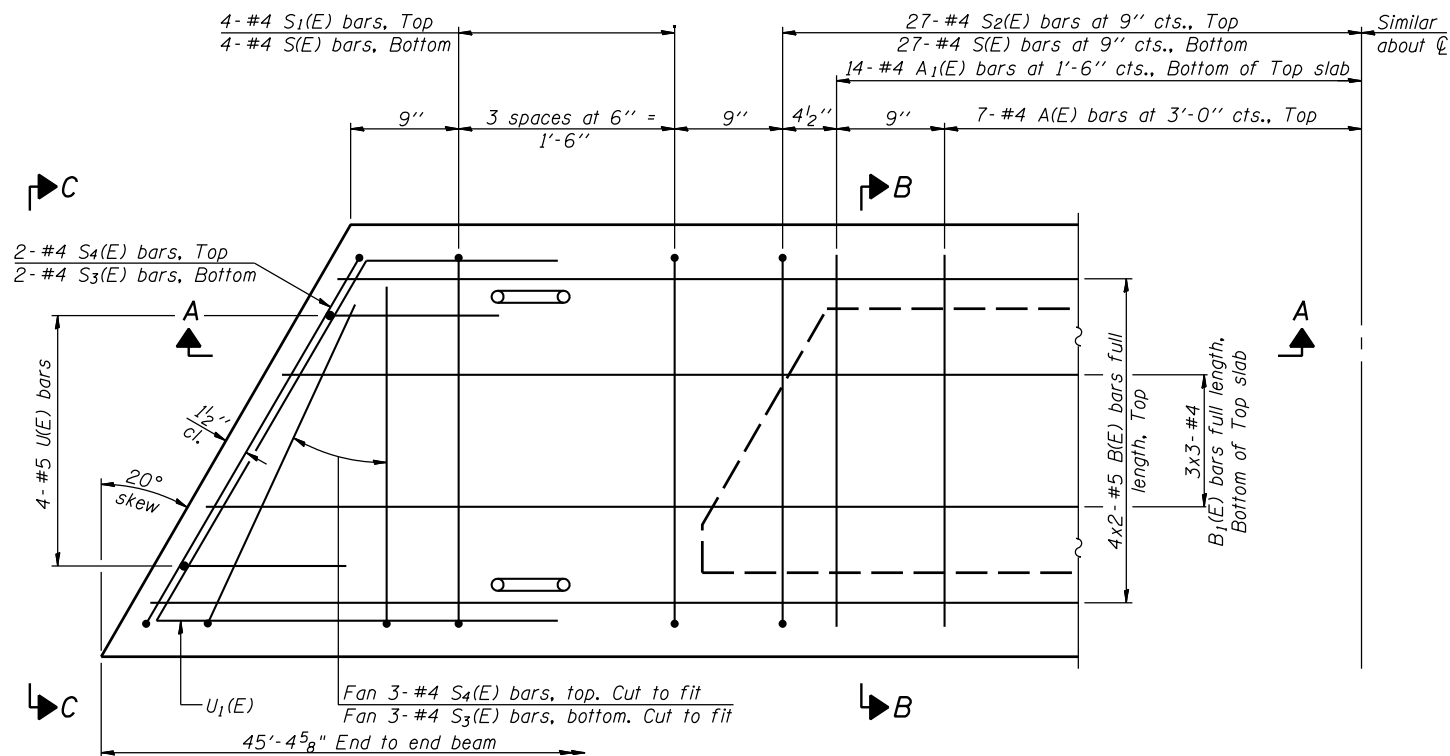
SECTION B-B
(Showing dimensions)



VIEW C-C

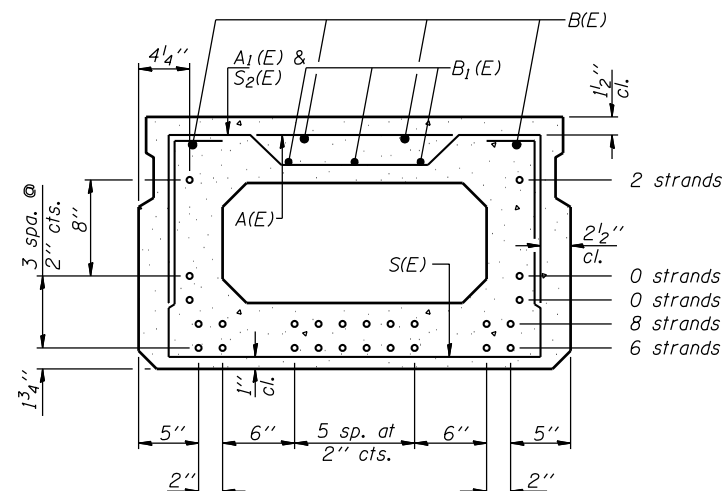
DESIGN STRESSES

$f'_c = 6,000$ psi
 $f'_{ci} = 5,000$ psi
 $f_{pu} = 270,000$ psi (1/2" low lax strands)
 $f_{pbt} = 201,960$ psi (1/2" low lax strands)



PLAN VIEW

Note: Spacing of S(E) and S2(E) bars may be adjusted up to 4" in the immediate area of the transverse tie diaphragms to miss the block outs for the transverse ties.



SECTION B-B

(Showing reinforcement and permissible strand locations)

Note: Place the number of strands specified in each row symmetrically about the centerline of beam in the permissible strand locations shown.

BAR LIST
ONE BEAM ONLY

(For information only)

Bar	No.	Size	Length	Shape
A(E)	14	#4	2'-7"	—
A1(E)	28	#4	2'-10"	~
B(E)	8	#5	24'-0"	—
B1(E)	9	#4	16'-6"	—
S(E)	62	#4	6'-5"	U
S1(E)	8	#4	4'-11"	U
S2(E)	54	#4	5'-2"	U
S3(E)	10	#4	4'-8"	U
S4(E)	10	#4	3'-10"	U
U(E)	8	#5	4'-0"	U
U1(E)	4	#4	6'-1"	U

Note: See sheet 11 of 16 for additional details and Bill of Material.
 Bars indicated thus 4x3-#5 etc. indicates 4 lines of bars with 3 lengths per line.

MINIMUM BAR LAP

#4 bar = 2'-0"
 #5 bar = 2'-6"

FILE NAME = s:\p1\6300-6395\6346\024\microso\finnals\plana\structural\010-DEAK.dgn

PD-2136-L

7-1-10



1170 SOUTH HOUBOLT ROAD
 JOLIET, ILLINOIS 60431
 (815) 744-4200

DESIGNED	RRD	REVISED	-
CHECKED	AJS	REVISED	-
DRAWN	BJF	REVISED	-
CHECKED	AJS	REVISED	-

STATE OF ILLINOIS
 DEPARTMENT OF TRANSPORTATION

21" x 36" PPC DECK BEAM
 STRUCTURE NO. 092-0171

SHEET NO. 10 OF 16 SHEETS

F.A.P. RTE.	SECTION	COUNTY	TOTAL SHEETS	SHEET NO.
840	120BR-1	VERMILION	44	22
CONTRACT NO. 70615				

ILLINOIS FED. AID PROJECT