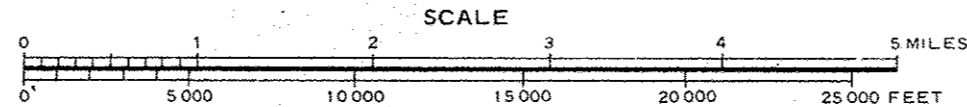
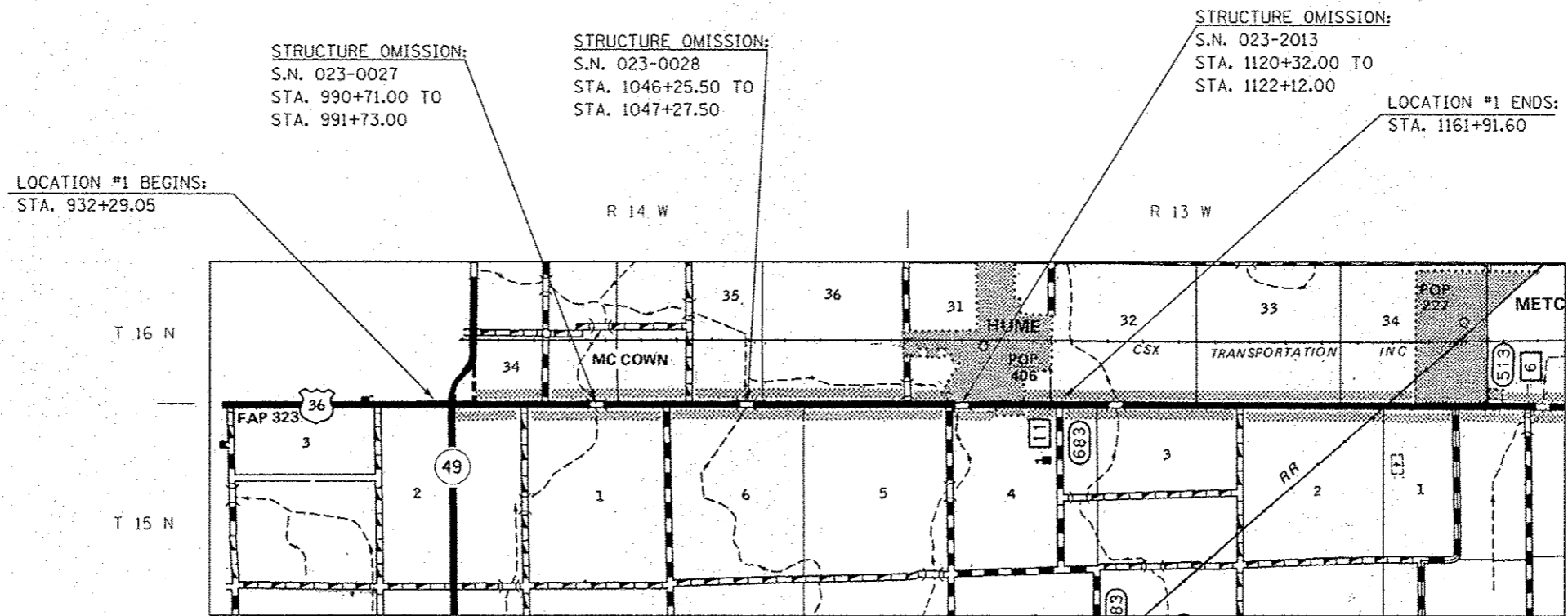


**LOCATION MAP #1**  
**F.A.P. ROUTE 323 (U.S. 36)**  
**FROM IL. 49 TO CH 11 (SHILOH RD.)**  
**EDGAR COUNTY /RURAL 2 LANE**



**GROSS LENGTH OF LOCATION #1 = 22,962.55 FT = 4.349 MILES**  
**NET LENGTH OF LOCATION #1 = 22,578.55 FT = 4.276 MILES**

TOWNSHIP:  
YOUNG AMERICA & SHILOH

• D5 CRACK & JOINT SEAL 2013-2

FILE NAME :	USER NAME : baker	DESIGNED -	REVISED -	<b>STATE OF ILLINOIS</b> <b>DEPARTMENT OF TRANSPORTATION</b>	<b>LOCATION MAP #1</b>	F.A. RTE. VAR.	SECTION *	COUNTY VARIES	TOTAL SHEETS 36	SHEET NO. 3
cr:\p\work\p\uidot\baker\10327161\0570302\hst-location map.dgn	PLOT SCALE : 40.0000 ' / in.	DRAWN -	REVISED -							
MODEL NAME :	PLOT DATE : 1/28/2013	CHECKED -	REVISED -		SCALE:	SHEET 1	OF 1	SHEETS	STA.	TO STA.
		DATE -	REVISED -							CONTRACT NO. 70982
										ILLINOIS FED. AID PROJECT