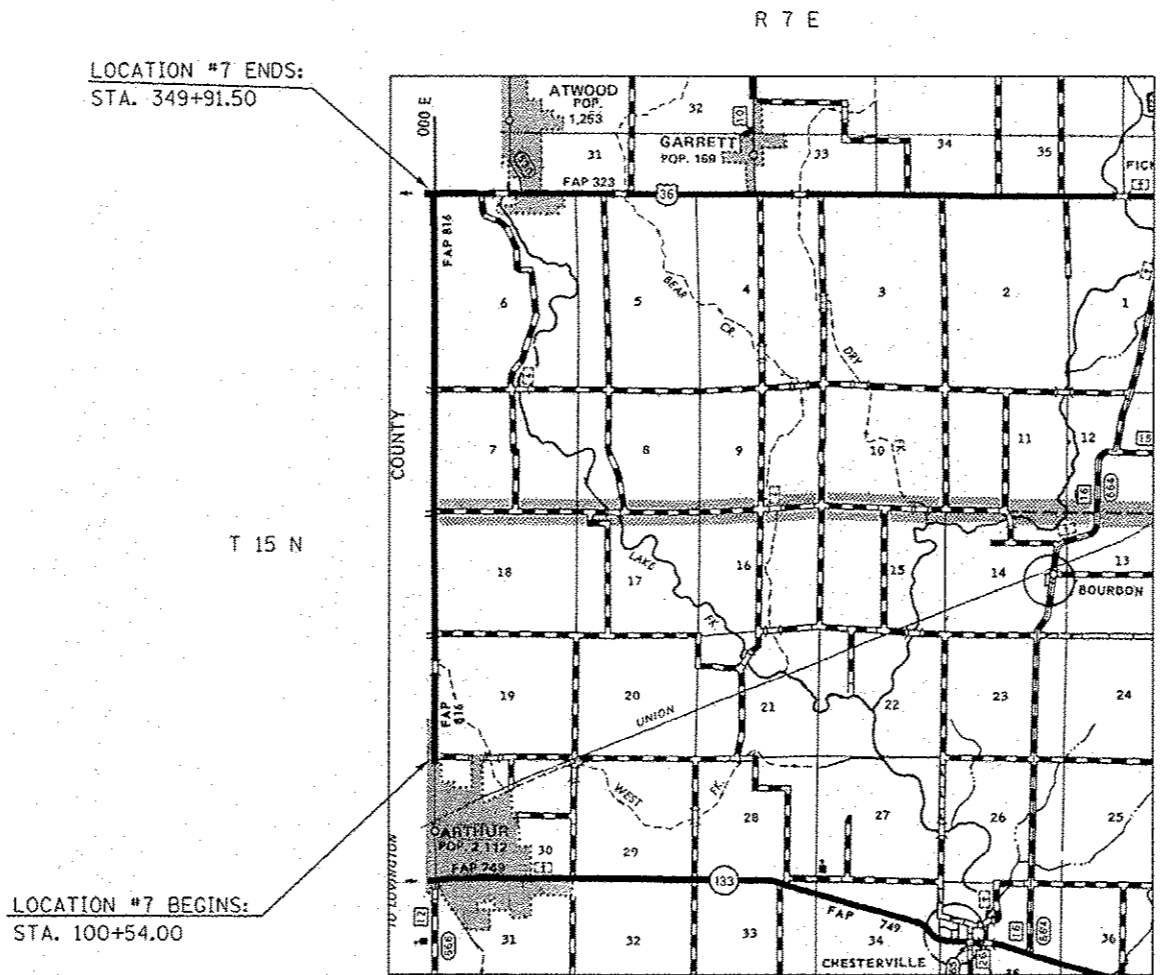


LOCATION MAP #7
F.A.P. ROUTE 816 (ATWOOD-ARTHUR ROAD)
FROM NCL OF ARTHUR TO U.S. 36
DOUGLAS COUNTY /RURAL 2 LANE



TOWNSHIP:
GARRETT & BOURBON

GROSS LENGTH OF LOCATION #7 = 24,937.50 FT = 4.723 MILES
NET LENGTH OF LOCATION #7 = 24,937.50 FT = 4.723 MILES

• D5 CRACK & JOINT SEAL 2013-2

FILE NAME : c:\p\work\p\idat\baker\0327161\0570	USER NAME : baker	DESIGNED -	REVISED -	STATE OF ILLINOIS DEPARTMENT OF TRANSPORTATION	LOCATION MAP #7			F.A. RTE.	SECTION	COUNTY	TOTAL SHEETS	SHEET NO.	
	027shl-location map.dgn	DRAWN -	REVISED -		SCALE:	SHEET 1	OF	SHEETS	STA. 1	TO STA.	VARIABLE	36	9
	PLOT SCALE = 40.0000' / 1"	CHECKED -	REVISED -								VARIES		
#MODELNAME	PLOT DATE = 1/28/2013	DATE -	REVISED -								CONTRACT NO. 70982		