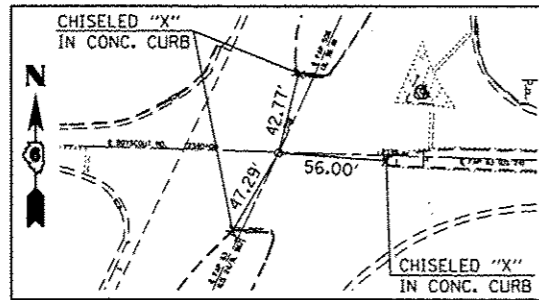
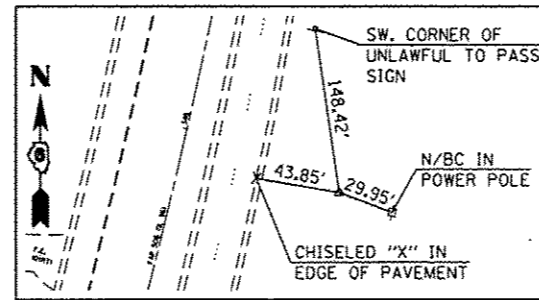


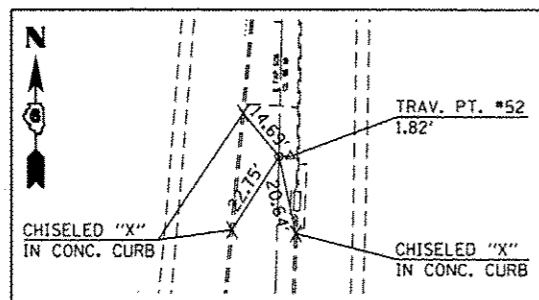
P.I. STA. 325+60.33
 (*4 REBAR - BURIED 12")
 STA. 325+10.25, 224.68' RT.
 ☐ FAP 63 (US 24/IL 96)
 NO TIES AVAILABLE



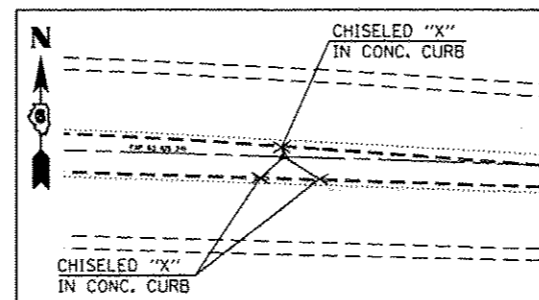
PCC STA. 337+89.13
 (PK NAIL IN CHISELED "X")



PI STA. 345+97.36
 (REBAR W/ CAP)



PT STA. 353+82.07 AH. =
 STA. 15+64.80 BK.
 (REBAR W/ CAP)



PI STA. 2337+00.00
 (STAR DRILL W/ CHISELED "X")

- BM# WS-1: SET CHISELED "☐" IN TOP CENTER OF CONCRETE COLLAR FOR 2' X 2' BOX EXTENSION, N. HEADWALL OF CULVERT BELOW EB, US 24; ±675' SW, OF JCT. US 24/24TH ST. STA. 297+11.47; 21.2' LT. NAVD 88 ELEV. 622.776
- BM# WS-2: SET CHISELED "☐" IN TOP CENTER OF CONCRETE COLLAR FOR BOX EXTENSION, N. HEADWALL OF CULVERT BELOW WB, US 24; NE. CORNER OF JCT. US 24/24TH ST. STA. 305+50.10; 55.12' LT. NAVD 88 ELEV. 630.037
- BM# AW-28: SET CHISELED "☐" IN CENTER OF SE. HEADWALL OF CULVERT BELOW EB US 24/IL 96 NEAR HMA MEADIAN CROSSOVER STA. 322+98.48; 70.38' RT. NAVD 88 ELEV. 633.804
- BM# WS-4: FOUND CHISELED "☐" IN S. END OF CONCRETE HEADWALL OF BOX CULVERT BELOW OLD DIRT FILL FOR OLD ROADWAY ±700' N. OF JCT. US 24/IL 96 STA. 344+96.99; 82.86' RT. NAVD 88 ELEV. 641.366
- BM# 96-01: SET CHISELED "☐" IN CENTER OF E. HEADWALL OF CULVERT; ±0.2 MILE N. OF JCT. US 24/IL 96 STA. 348+98.07; 12.98' LT. NAVD 88 ELEV. 635.852
- BM# AW-30: SET CHISELED "☐" IN CENTER OF E. HEADWALL OF 5' X 10' CULVERT; ±0.41 MILE N. OF JCT. US 24/IL 96 STA. 21+32.50; 42.10' RT. NAVD 88 ELEV. 614.161
- BM# AW-29: SET CHISELED "☐" IN CENTER OF S. HEADWALL OF 3' X 3' BOX CULVERT; ±1000' E. OF JCT. US 24/IL 96 STA. 2322+99.79; 21.90' LT. NAVD 88 ELEV. 644.105

* FAP 63 (US 24); FAP 63 (US 24/IL 96); FAP 506 (IL 96)

FILE NAME =	USER NAME = sparkgw	DESIGNED -	REVISED -
ci:\pw-work\p\idot\sparkgw\0259630\067	REJ-ght-ATB.dgn	DRAWN -	REVISED -
Default	PLOT SCALE = 100.0000 1/1 in.	CHECKED -	REVISED -
	PLOT DATE = Dec-14-2012 03:45:16PM	DATE -	REVISED -

STATE OF ILLINOIS
 DEPARTMENT OF TRANSPORTATION

CROSS TIES AND BENCHMARKS

SCALE: SHEET 1 OF 1 SHEETS STA. TO STA.

F.A.P. RTE.	SECTION	COUNTY	TOTAL SHEETS	SHEET NO.
*	(11N,TS-2RS-5&7B)RS-3	ADAMS	194	54
CONTRACT NO. 72E31			ILLINOIS FED. AID PROJECT	