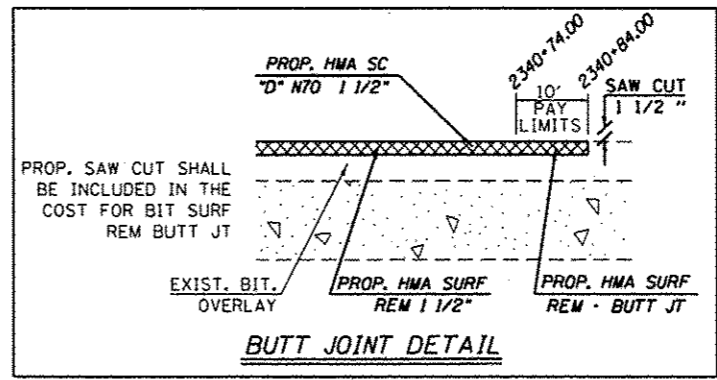
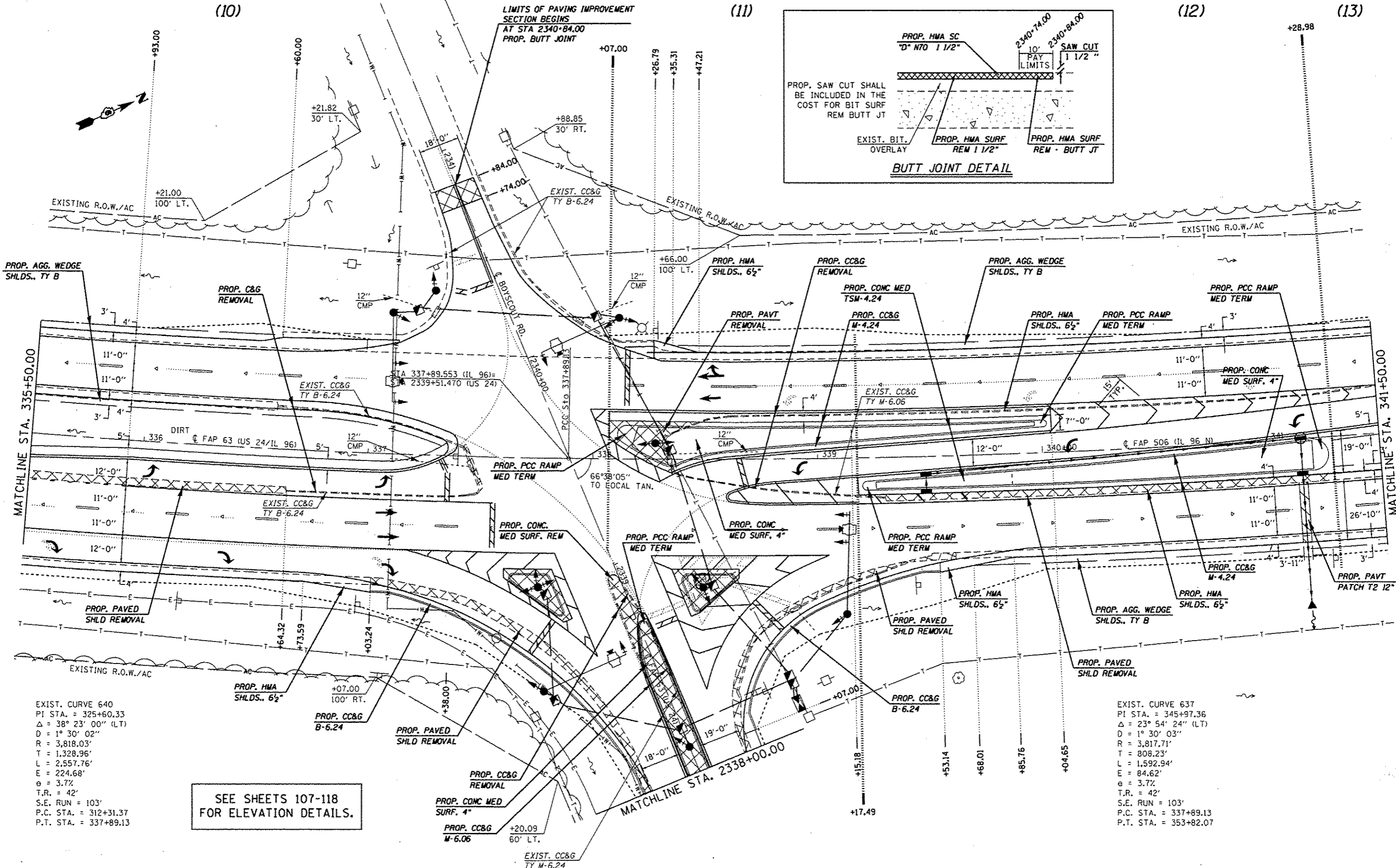


(10)

(11)

(12)

(13)



EXIST. CURVE 640
 PI STA. = 325+60.33
 $\Delta = 38^\circ 23' 00''$ (LT)
 $D = 1^\circ 30' 02''$
 $R = 3,818.03'$
 $T = 1,328.96'$
 $L = 2,557.76'$
 $E = 224.68'$
 $\theta = 3.7\%$
 $T.R. = 42'$
 $S.E. RUN = 103'$
 $P.C. STA. = 312+31.37$
 $P.T. STA. = 337+89.13$

SEE SHEETS 107-118
 FOR ELEVATION DETAILS.

EXIST. CURVE 637
 PI STA. = 345+97.36
 $\Delta = 23^\circ 54' 24''$ (LT)
 $D = 1^\circ 30' 03''$
 $R = 3,817.71'$
 $T = 808.23'$
 $L = 1,592.94'$
 $E = 84.62'$
 $\theta = 3.7\%$
 $T.R. = 42'$
 $S.E. RUN = 103'$
 $P.C. STA. = 337+89.13$
 $P.T. STA. = 353+82.07$

FILE NAME : c:\pwwork\pwwork\sparkg\ad259630\PLN\eng.dgn	USER NAME : sparkg	DESIGNED -	REVISED -	STATE OF ILLINOIS DEPARTMENT OF TRANSPORTATION	PLAN SHEET	F.A.P. RTE.	SECTION	COUNTY	TOTAL SHEETS	SHEET NO.
Default	PLOT SCALE = 48,0000 1" = 100'	DRAWN -	REVISED -			(11N)TS-2RS-5&7BRS-3	ADAMS	194	73	
	PLOT DATE = Dec-14-2012 03:45:28PM	CHECKED -	REVISED -			CONTRACT NO. 72E31				
		DATE -	REVISED -			ILLINOIS FED. AID PROJECT				