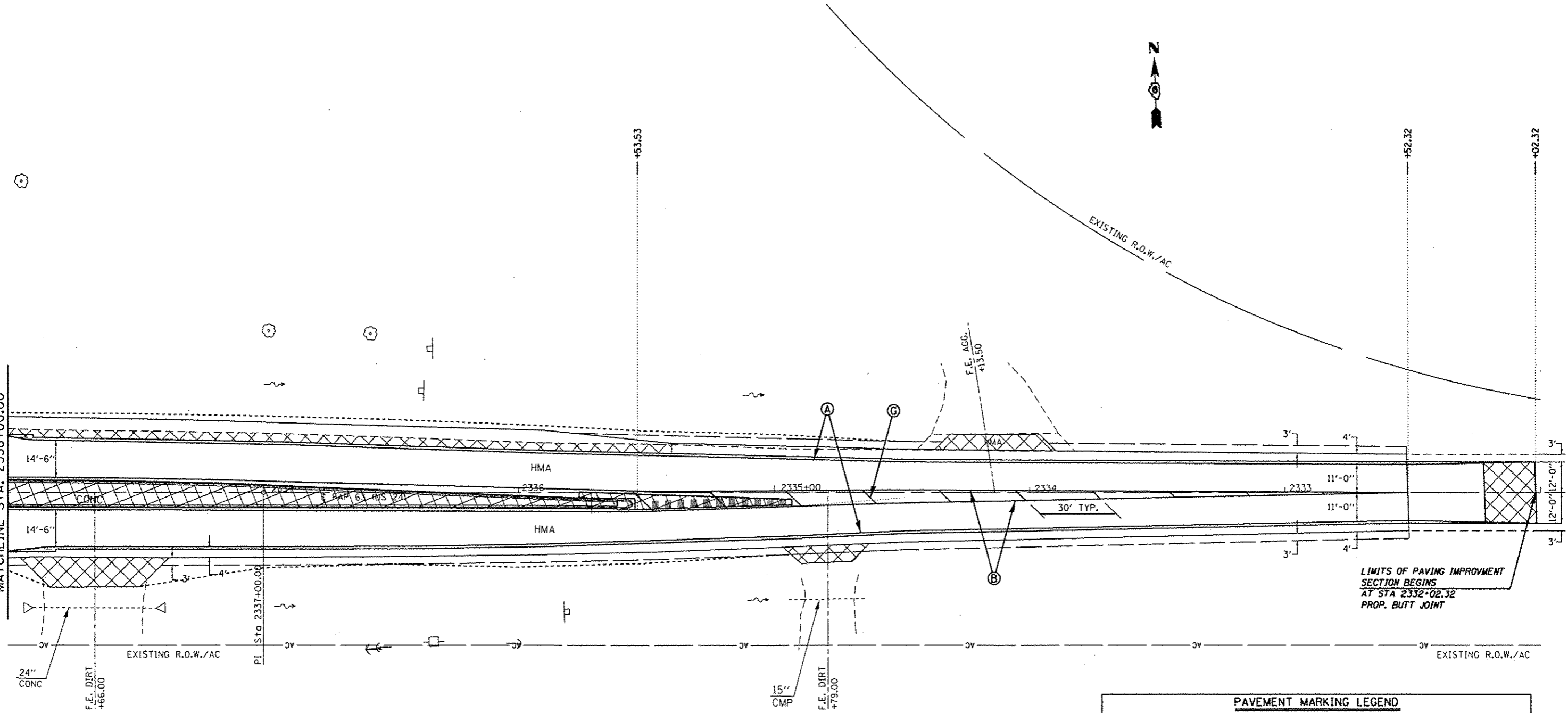


MATCHLINE STA. 2338+00.00



LIMITS OF PAVING IMPROVMENT  
SECTION BEGINS  
AT STA 2332+02.32  
PROP. BUTT JOINT

PAVEMENT MARKING LEGEND	
(MODIFIED URETHANE)	
(A)	PAVEMENT MARKING - LINE - 5" WHITE (SOLID)
(B)	PAVEMENT MARKING - LINE - 5" YELLOW (SOLID)
(C)	PAVEMENT MARKING - LINE - 5" YELLOW (SKIP-DASH - 10' DASH, 30' SKIP)
(D)	PAVEMENT MARKING - LINE - 5" DOUBLE YELLOW (SOLID)
(E)	PAVEMENT MARKING - LINE - 8" WHITE (SOLID)
(F)	PAVEMENT MARKING - LINE - 12" WHITE (SOLID)
(G)	PAVEMENT MARKING - LINE - 12" YELLOW (SOLID)
(PREFORMED PLASTIC, TYPE B - INLAID -)	
(H)	PAVEMENT MARKING - LETTERS & SYMBOLS WHITE (SOLID)
(I)	PAVEMENT MARKING - LINE - 5" WHITE (SKIP-DASH - 10' DASH, 30' SKIP)
(J)	PAVEMENT MARKING - LINE - 6" WHITE (SOLID)
(K)	PAVEMENT MARKING - LINE - 6" WHITE (SHORT SKIP-DASH - 2' DASH, 6' SKIP)
(L)	PAVEMENT MARKING - LINE - 24" WHITE (SOLID)

FILE NAME :	USER NAME : sparksg	DESIGNED -	REVISED -
c:\pwwork\pwwork\sparksg\108259630\067	sparksg	DRAWN -	REVISED -
Default	PLT SCALE = 48.0000' / in.	CHECKED -	REVISED -
	PLT DATE = Dec-14-2012 03:45:54PM	DATE -	REVISED -

**STATE OF ILLINOIS  
DEPARTMENT OF TRANSPORTATION**

**PAVEMENT MARKING SHEETS**

SCALE: 20 SHEET 14 OF 14 SHEETS STA. 2338+00.00 TO STA. 2332+00.00

F.A.P. RTE.	SECTION	COUNTY	TOTAL SHEETS	SHEET NO.
	(1)N.TS-2RS-5&(7)RS-3	ADAMS	194	133
			CONTRACT NO. 72E31	
ILLINOIS FED. AID PROJECT				

FAP 63 (US 24); FAP 63 (US 24/IL 96); FAP 506 (IL 96)