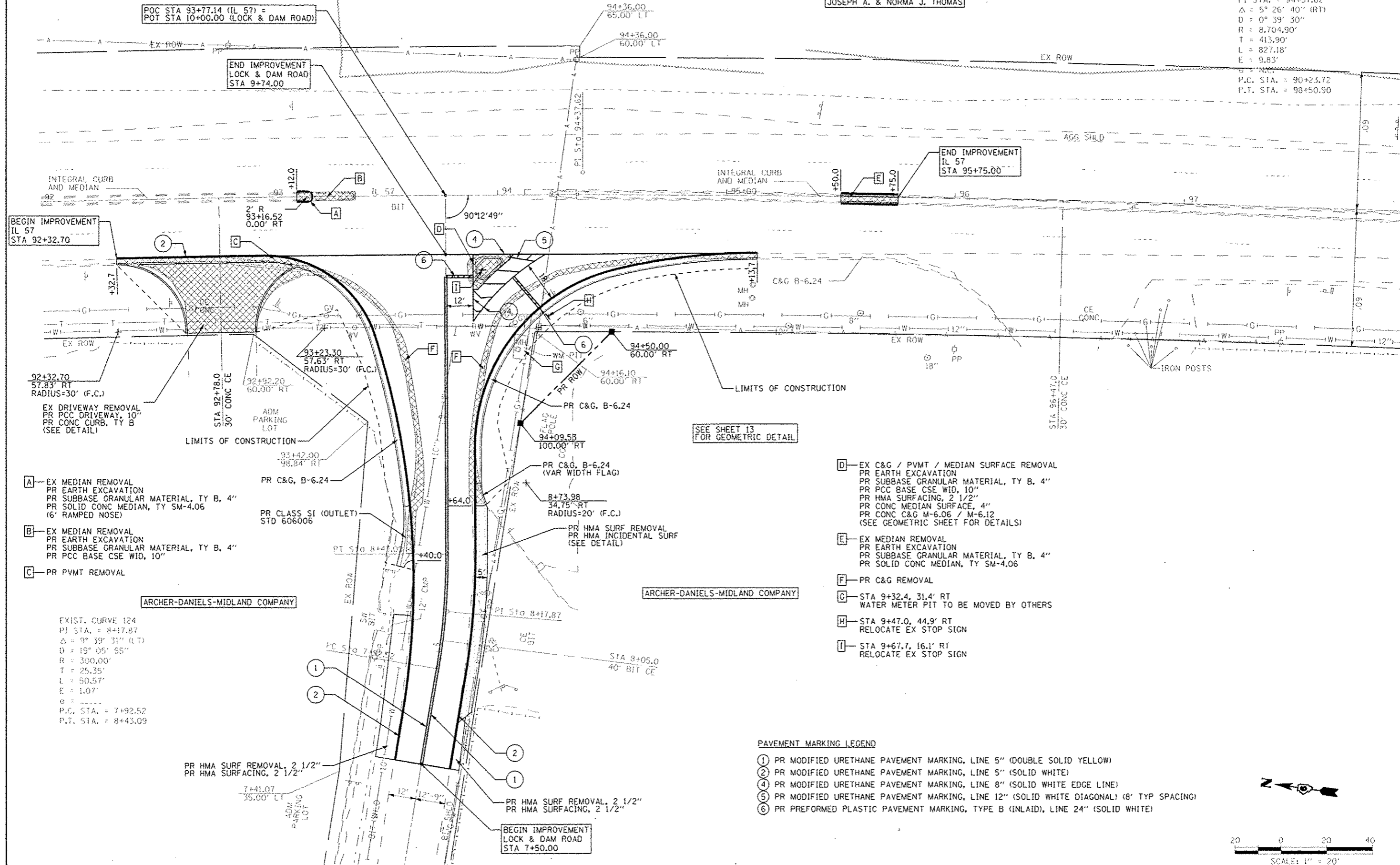


GARDNER DENVER MACHINERY, INC.

JOSEPH A. & NORMA J. THOMAS

EXIST. CURVE 120  
 PI STA. = 94+37.62  
 $\Delta = 5^\circ 26' 40''$  (RT)  
 $D = 0^\circ 39' 30''$   
 $R = 8,704.90'$   
 $T = 413.90'$   
 $L = 827.18'$   
 $E = 9.83'$   
 $B = N.C.$   
 P.C. STA. = 90+23.72  
 P.T. STA. = 98+50.90



BEGIN IMPROVEMENT IL 57 STA 92+32.70

END IMPROVEMENT LOCK & DAM ROAD STA 9+74.00

END IMPROVEMENT IL 57 STA 95+75.00

BEGIN IMPROVEMENT LOCK & DAM ROAD STA 7+50.00

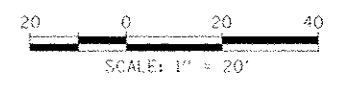
SEE SHEET 13 FOR GEOMETRIC DETAIL

- A - EX MEDIAN REMOVAL  
PR EARTH EXCAVATION  
PR SUBBASE GRANULAR MATERIAL, TY B, 4"  
PR SOLID CONC MEDIAN, TY SM-4.06 (6' RAMPED NOSE)
- B - EX MEDIAN REMOVAL  
PR EARTH EXCAVATION  
PR SUBBASE GRANULAR MATERIAL, TY B, 4"  
PR PCC BASE CSE WID, 10"
- C - PR PVMT REMOVAL

- D - EX C&G / PVMT / MEDIAN SURFACE REMOVAL  
PR EARTH EXCAVATION  
PR SUBBASE GRANULAR MATERIAL, TY B, 4"  
PR PCC BASE CSE WID, 10"  
PR HMA SURFACING, 2 1/2"  
PR CONC MEDIAN SURFACE, 4"  
PR CONC C&G M-6.06 / M-6.12 (SEE GEOMETRIC SHEET FOR DETAILS)
- E - EX MEDIAN REMOVAL  
PR EARTH EXCAVATION  
PR SUBBASE GRANULAR MATERIAL, TY B, 4"  
PR SOLID CONC MEDIAN, TY SM-4.06
- F - PR C&G REMOVAL
- G - STA 9+32.4, 31.4' RT  
WATER METER PIT TO BE MOVED BY OTHERS
- H - STA 9+47.0, 44.9' RT  
RELOCATE EX STOP SIGN
- I - STA 9+67.7, 16.1' RT  
RELOCATE EX STOP SIGN

PAVEMENT MARKING LEGEND

- 1 PR MODIFIED URETHANE PAVEMENT MARKING, LINE 5" (DOUBLE SOLID YELLOW)
- 2 PR MODIFIED URETHANE PAVEMENT MARKING, LINE 5" (SOLID WHITE)
- 4 PR MODIFIED URETHANE PAVEMENT MARKING, LINE 8" (SOLID WHITE EDGE LINE)
- 5 PR MODIFIED URETHANE PAVEMENT MARKING, LINE 12" (SOLID WHITE DIAGONAL) (8' TYP SPACING)
- 6 PR PREFORMED PLASTIC PAVEMENT MARKING, TYPE B (INLAID), LINE 24" (SOLID WHITE)



FILE NAME -	USER NAME -	DESIGNED -	REVISED -	<b>STATE OF ILLINOIS DEPARTMENT OF TRANSPORTATION</b>	<b>PLAN SHEET</b>	F.A.P. RTE.	SECTION	COUNTY	TOTAL SHEETS	SHEET NO.	
GNV\B\15\080224\NO 3 - IL 57 and LD Road\CADD Sheets\0872F46-sh1-Plan02.dwg		DRAWN -	REVISED -			502	(53) N-1	ADAMS	20	11	
		CHECKED -	REVISED -			CONTRACT NO. 72F 46					
		DATE -	REVISED -			FED. ROAD DIST. NO. 6 ILLINOIS FED. AID PROJECT					