

STATE OF ILLINOIS
DEPARTMENT OF TRANSPORTATION
DIVISION OF HIGHWAYS

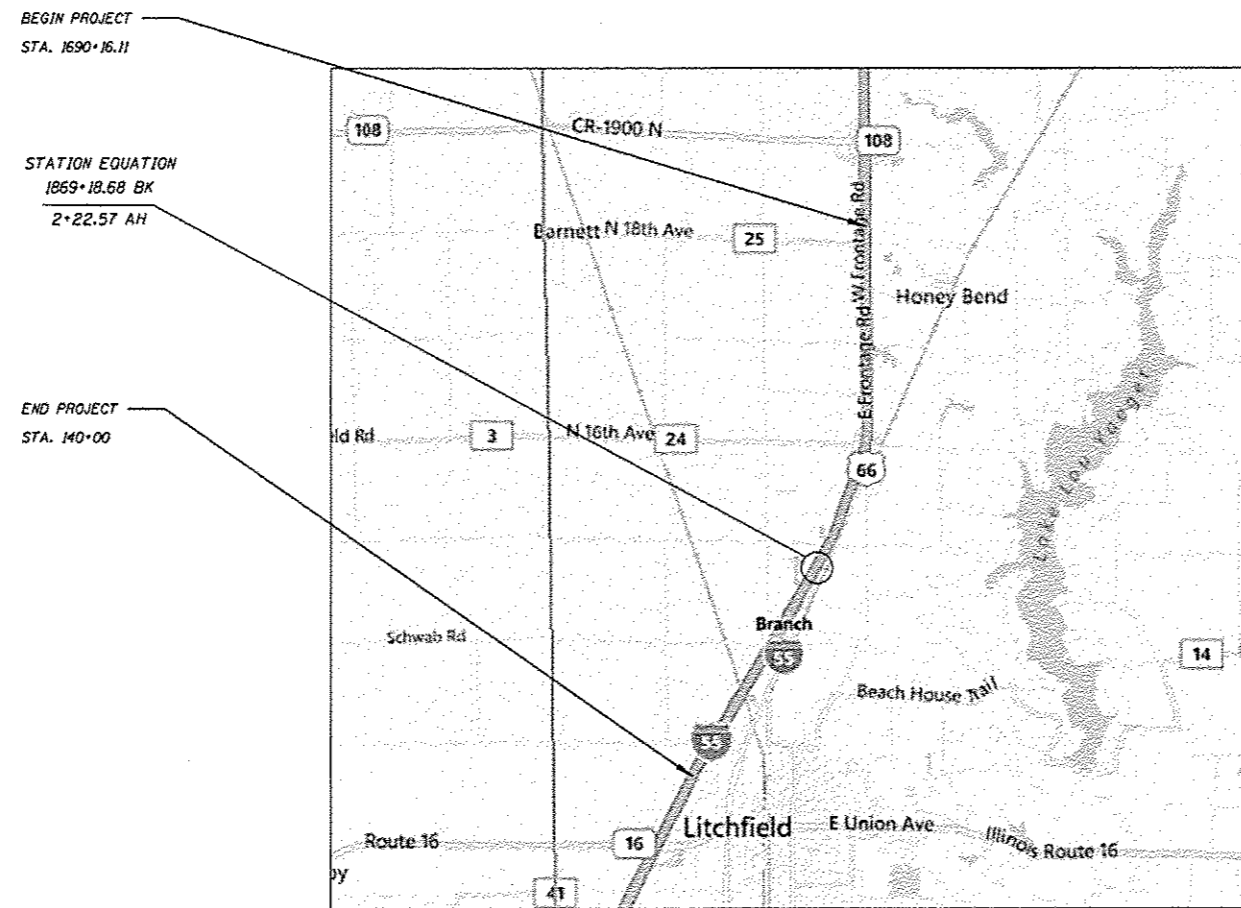
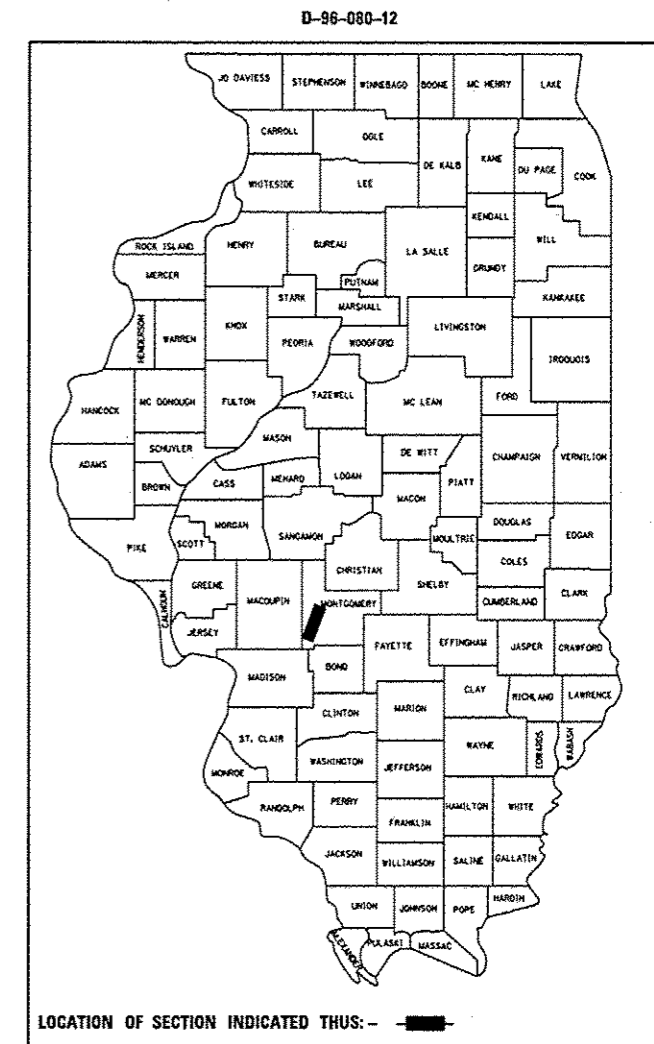
PROPOSED CONTRACT MAINTENANCE

FOR INDEX OF SHEETS, SEE SHEET NO. 2

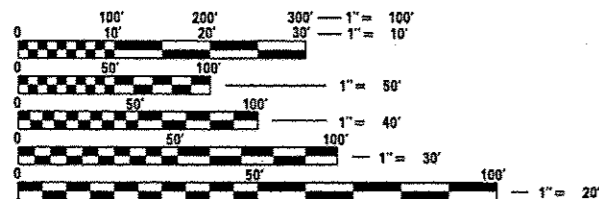
FAI 55 (I-55)
SECTION (68-1)I-4, (68-2)I-3
PAVEMENT JOINT SEAL
MONTGOMERY COUNTY

D-96-080-12

F.A.I. RTE.	SECTION	COUNTY	TOTAL SHEETS	SHEET NO.
55	(68-1)I-4, (68-2)I-3	MONTGOMERY	5	1
FED. ROAD DIST. NO.		ILLINOIS	CONTRACT NO. 72F62	



A.D.T. 11,600(3,100)



FULL SIZE PLANS HAVE BEEN PREPARED USING STANDARD ENGINEERING SCALES. REDUCED SIZED PLANS WILL NOT CONFORM TO STANDARD SCALES. IN MAKING MEASUREMENTS ON REDUCED PLANS, THE ABOVE SCALES MAY BE USED.

J.U.L.I.E.
JOINT UTILITY LOCATION INFORMATION FOR EXCAVATION
1-800-892-0123
OR 811

PLAN AND CONTRACT TECHNICIAN
TIMOTHY SHARP (217)782-7743

CONTRACT NO. 72F62

GROSS LENGTH = 31,680 FT = 6.00 MILE

STATE OF ILLINOIS
DEPARTMENT OF TRANSPORTATION
DIVISION OF HIGHWAYS

SUBMITTED September 4, 2012
Reggie Z. Johnson
DEPUTY DIRECTOR OF HIGHWAYS, REGION ENGINEER

October 5, 2012
John D. Baranelli PE, Ia
acting ENGINEER OF DESIGN AND ENVIRONMENT

October 5, 2012
William R. Fray, Ia
acting DIRECTOR OF HIGHWAYS, CHIEF ENGINEER

PRINTED BY THE AUTHORITY
OF THE STATE OF ILLINOIS