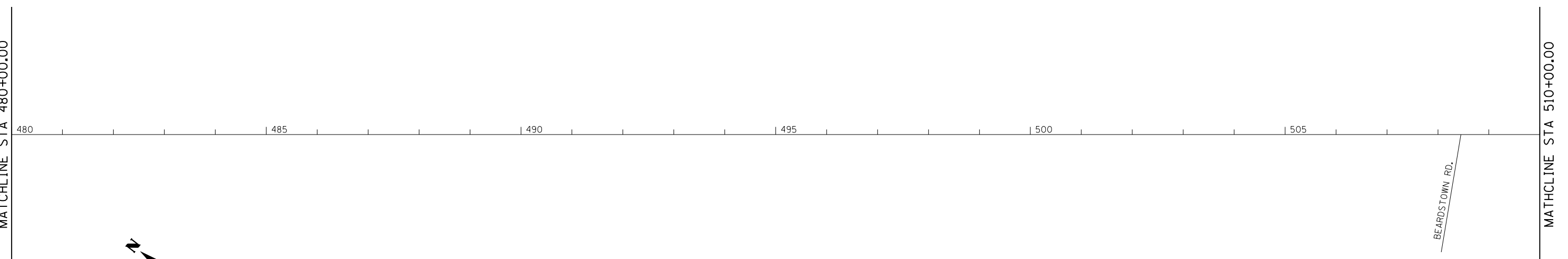
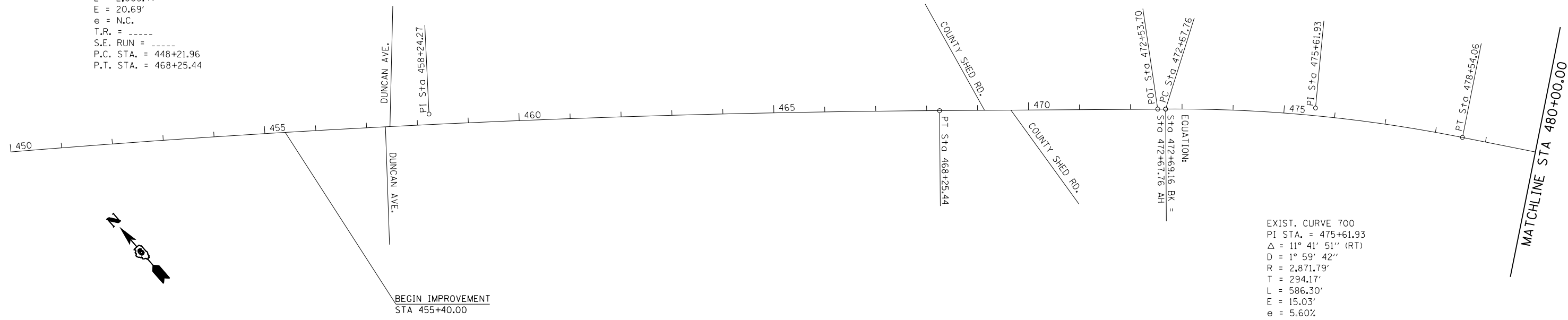


EXIST. CURVE 578
 PI STA. = 458+24.27
 $\Delta = 4^\circ 43' 48''$ (RT)
 $D = 0^\circ 14' 10''$
 $R = 24,269.19'$
 $T = 1,002.30'$
 $L = 2,003.47'$
 $E = 20.69'$
 $e = N.C.$
 T.R. = -----
 S.E. RUN = -----
 P.C. STA. = 448+21.96
 P.T. STA. = 468+25.44



FILE NAME =	USER NAME = sparksgw	DESIGNED - EK	REVISED -
ci:\pw\work\p1dot\sparksgw\10313888\0672\F69-SHT_PLN1.dgn		DRAWN - EK	REVISED -
Default	PLOT SCALE = 200.0000' / in.	CHECKED - JM	REVISED -
	PLOT DATE = Oct-17-2012 12:27:35PM	DATE -	REVISED -

**STATE OF ILLINOIS
 DEPARTMENT OF TRANSPORTATION**

ALIGNMENT DIAGRAM PLAN SHEETS

SCALE: 100 SHEET 1 OF SHEETS STA. 455+40.00 TO STA. 510+00.00

F.A.P. RTE.	SECTION	COUNTY	TOTAL SHEETS	SHEET NO.
67	•	CASS	47	25
CONTRACT NO. 72F69			ILLINOIS FED. AID PROJECT	