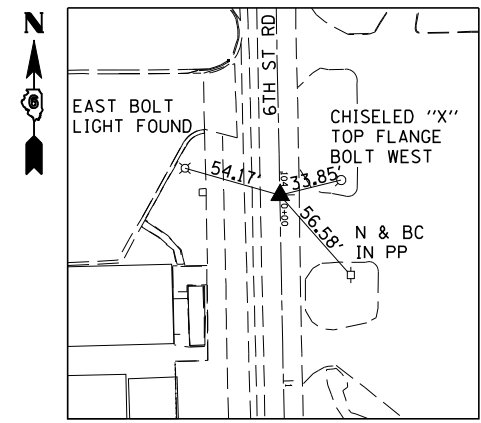
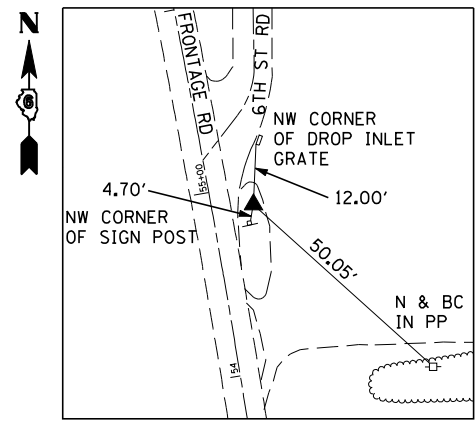


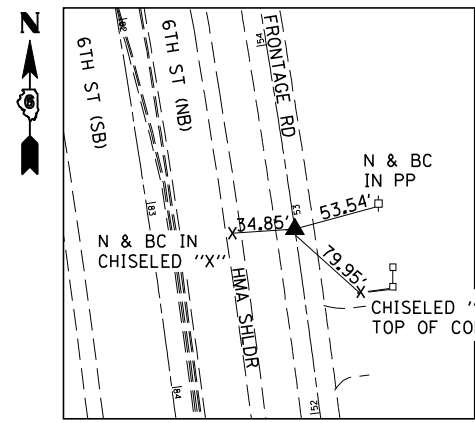
P.O.T. STA 6+83.73 (S300)
P.O.T. STA 100+00.00 (S034)
PK NAIL W CHISELED "X"



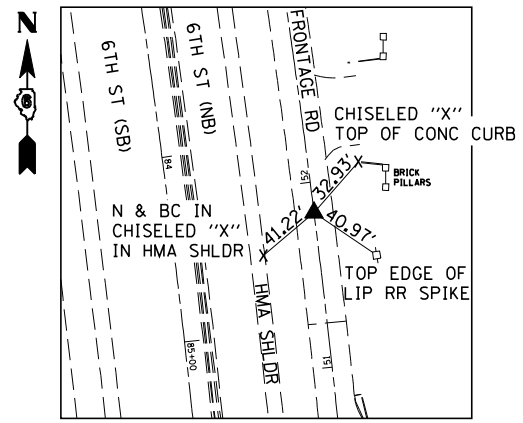
STA EON: STA 104+12.35 BK = STA 0+00.00 AH
PK NAIL W CHISELED "X"



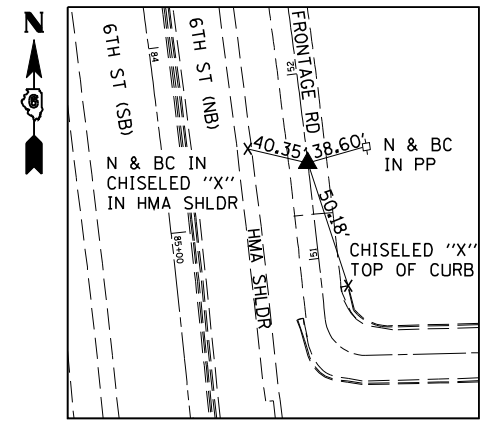
P.C. STA 18+17.36
SET #4 REBAR W IDOT CAP



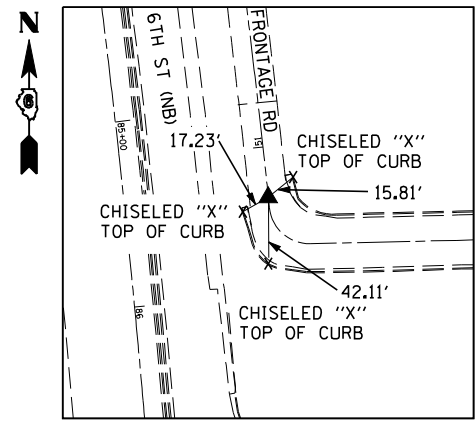
P.I. STA 19+66.57
SET PK NAIL IN CHISELED "X"



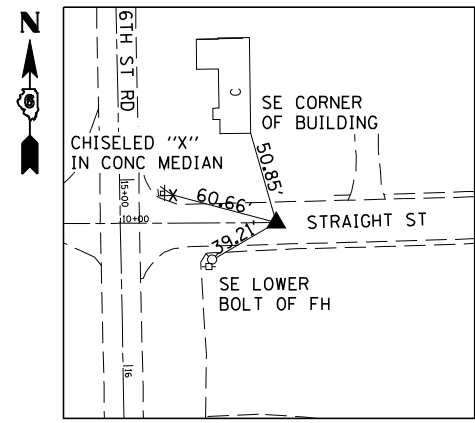
P.R.C. STA 21+15.51
SET PK NAIL IN CHISELED "X"



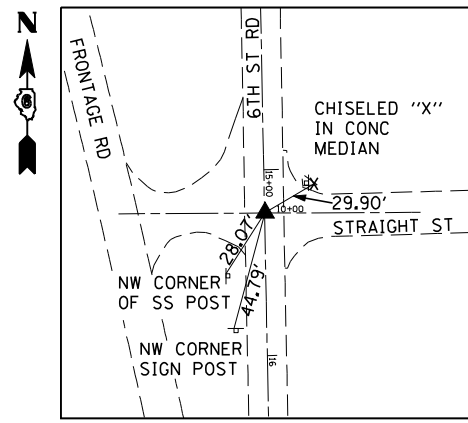
P.I. STA 21+70.61
SET PK NAIL IN CHISELED "X"



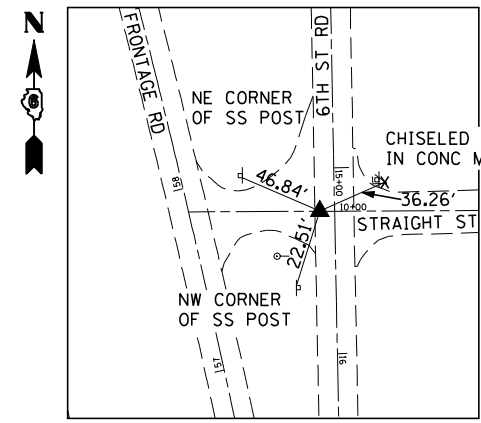
P.T. STA 22+25.71
SET PK NAIL IN CHISELED "X"



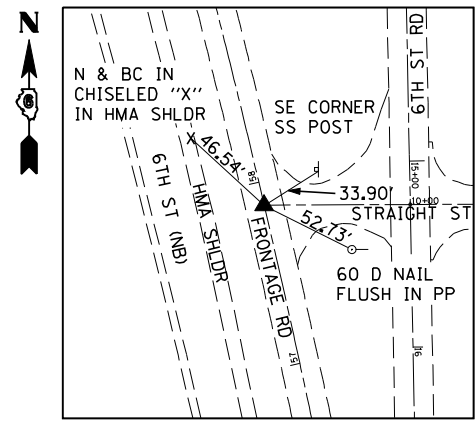
P.O.T. STA 10+83.89
SET PK NAIL IN CHISELED "X"



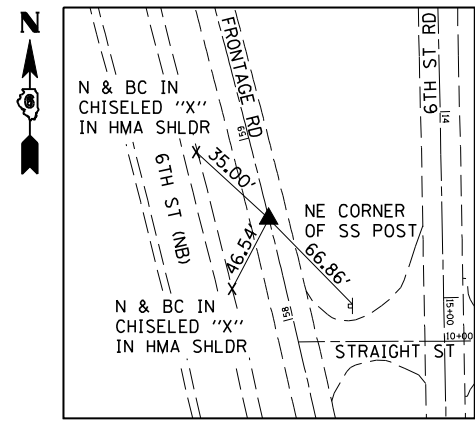
P.O.T. STA 57+30.71
SET PK NAIL IN CHISELED "X"



P.C. STA 57+37.94
SET PK NAIL IN CHISELED "X"



P.I. STA 58+08.80
SET PK NAIL IN CHISELED "X"



P.R.C. STA 58+57.99
SET PK NAIL IN CHISELED "X"

BM WS-2: SET CHISELED "X" ON S.W. TOP FLANGE BOLT OF FIRE HYDRANT, EAST SIDE OF OLD 6TH ST. JUST N. OF ST. JOSEPH ST.; STA 104+05.4, 33.1' LT (S034) NAVD '88: 601.859

BM TA-23: FOUND CHISELED "□" N. END CONCRETE FOUNDATION OF TRAFFIC SIGNAL HAND HOLE LOCATED IN GRASS MEDIAN OF S. 6TH ST. & S. OF STEVENSON DR.; STA 59+05.9, 2.0' LT (S200) NAVD '88: 605.341

BM TA-21: CHISELED "□" CENTER W. HEADWALL 24" RCCP UNDER E. FRONTAGE RD E. OF S. 6TH ST. & ACROSS FROM STANLEY STEAMER; STA 80+03.0, 59.9' LT (S200) NAVD '88: 599.523

BM "STEVE": CHISELED "□" N.E. CORNER MAST ARM FOUNDATION S.W. QUAD 6TH ST. & STEVENSON DR.; STA 59+32.0, 67.4' RT (S200) NAVD '88: 604.607

BM TJM-5: FOUND CHISELED "□" S.E. CORNER OF TRAFFIC SIGNAL FOUNDATION AT N.E. QUAD OF I-55B(6TH ST.) & ST. JOSEPH ST.; STA 64+35.4, 63.7' LT (S200) NAVD '88: 603.618

BM TA-24: FOUND CHISELED "□" ON SOUTH SIDE OF TRAFFIC SIGNAL FOUNDATION, LOCATED IN THE NW ISLAND AT STEVENSON AND BAKER DRIVES; STA 6+59.5, 41.6' LT (S300) NAVD '88: 603.880



JOB = 2265.11	DESIGNED - NAK	REVISED -
FILE NAME = 0672F74-shr-ATB.dgn	DRAWN - SJS	REVISED -
PLOT SCALE = 384.0000' / IN.	CHECKED - NAK	REVISED -
PLOT DATE = 2/4/2013	DATE - 10/8/2012	REVISED -

STATE OF ILLINOIS
DEPARTMENT OF TRANSPORTATION

CROSS TIES & BENCHMARKS			
SBI 126 (6TH ST RD)			
SCALE:	SHEET NO.	OF SHEETS	STA. TO STA.

S.B.I. RTE.	SECTION	COUNTY	TOTAL SHEETS	SHEET NO.
126	(110) I-2	SANGAMON	93	26
FED. ROAD DIST. NO.			ILLINOIS FED. AID PROJECT	
			CONTRACT NO. 72F74	