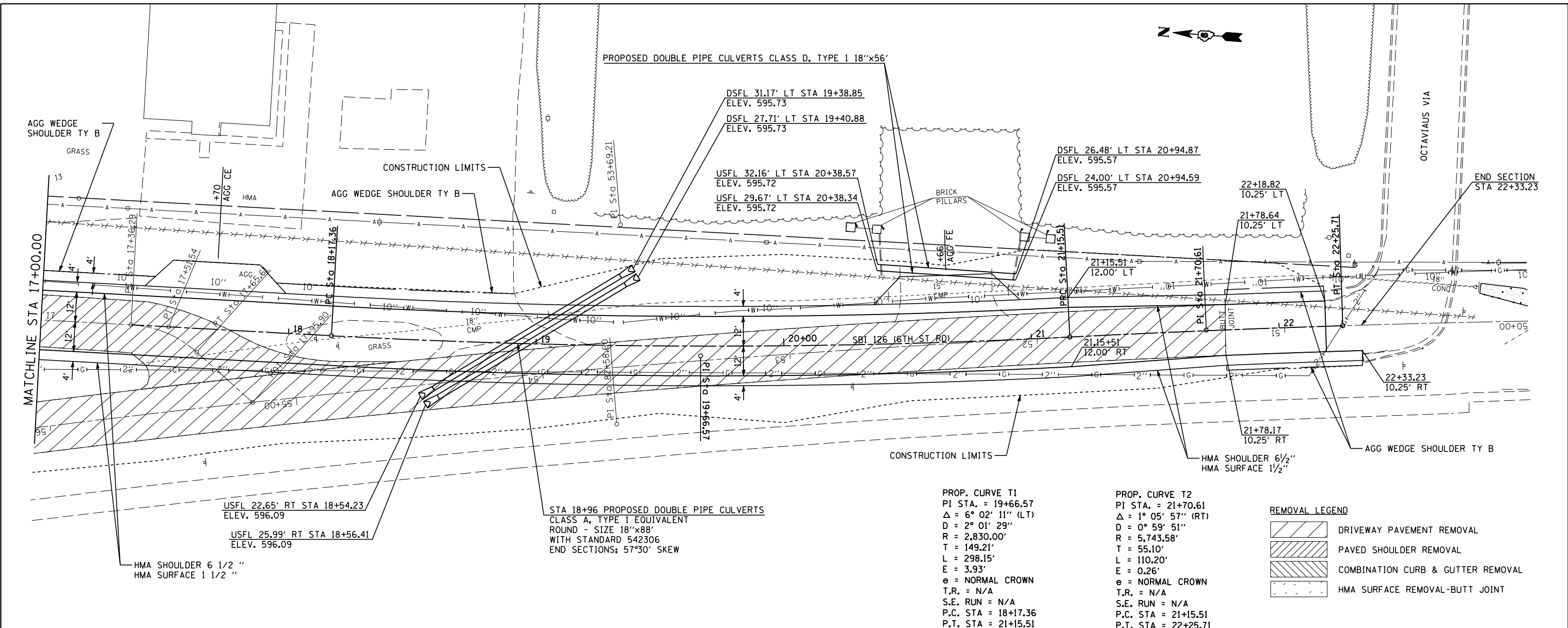


PLAN	SURVEYED	BY	DATE
	PLOTTED		
	CHECKED		
	AT		
	NO. _____		
	FILE NAME		

PROFILE	SURVEYED	BY	DATE
	PLOTTED		
	CHECKED		
	AT		
	NO. _____		
	FILE NAME		

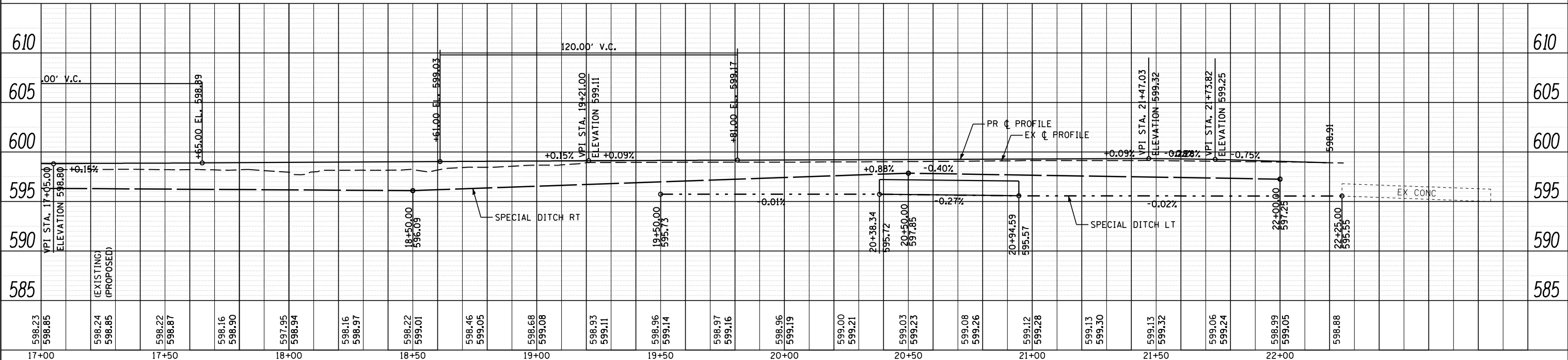


**PROP. CURVE T1**  
 PI STA. = 19+66.57  
 $\Delta = 6^{\circ} 02' 11''$  (LT)  
 $D = 2^{\circ} 01' 29''$   
 $R = 2,830.00'$   
 $T = 149.21'$   
 $L = 298.15'$   
 $E = 3.93'$   
 $e = \text{NORMAL CROWN}$   
 $T.R. = N/A$   
 $S.E. \text{ RUN} = N/A$   
 $P.C. \text{ STA} = 18+17.36$   
 $P.T. \text{ STA} = 21+15.51$

**PROP. CURVE T2**  
 PI STA. = 21+70.61  
 $\Delta = 1^{\circ} 05' 57''$  (RT)  
 $D = 0^{\circ} 59' 51''$   
 $R = 5,743.58'$   
 $T = 55.10'$   
 $L = 110.20'$   
 $E = 0.26'$   
 $e = \text{NORMAL CROWN}$   
 $T.R. = N/A$   
 $S.E. \text{ RUN} = N/A$   
 $P.C. \text{ STA} = 21+15.51$   
 $P.T. \text{ STA} = 22+25.71$

**REMOVAL LEGEND**

	DRIVEWAY PAVEMENT REMOVAL
	PAVED SHOULDER REMOVAL
	COMBINATION CURB & GUTTER REMOVAL
	HMA SURFACE REMOVAL-BUTT JOINT



<b>CEC</b> Cummins Engineering Corporation Civil and Structural Engineering	JOB = 2265.11	DESIGNED - NAK	REVISED -	<b>STATE OF ILLINOIS</b> <b>DEPARTMENT OF TRANSPORTATION</b>	<b>PLAN AND PROFILE SHEET</b> <b>SBI 126 (6TH STREET ROAD)</b>	S.B.I. RTE. 126	SECTION (110) I-2	COUNTY SANGAMON	TOTAL SHEETS 93	SHEET NO. 31
	FILE NAME = D672F74-sht-pln.dgn	DRAWN - SJS	REVISED -			SCALE: SHEET OF SHEETS STA. 17+00 TO STA. 22+50	FED. ROAD DIST. NO. ILLINOIS FED. AID PROJECT			
	PLOT SCALE = 40.0000' / IN.	CHECKED - NAK	REVISED -					CONTRACT NO. 72F74		
	PLOT DATE = 2/4/2013	DATE - 10/8/2012	REVISED -							