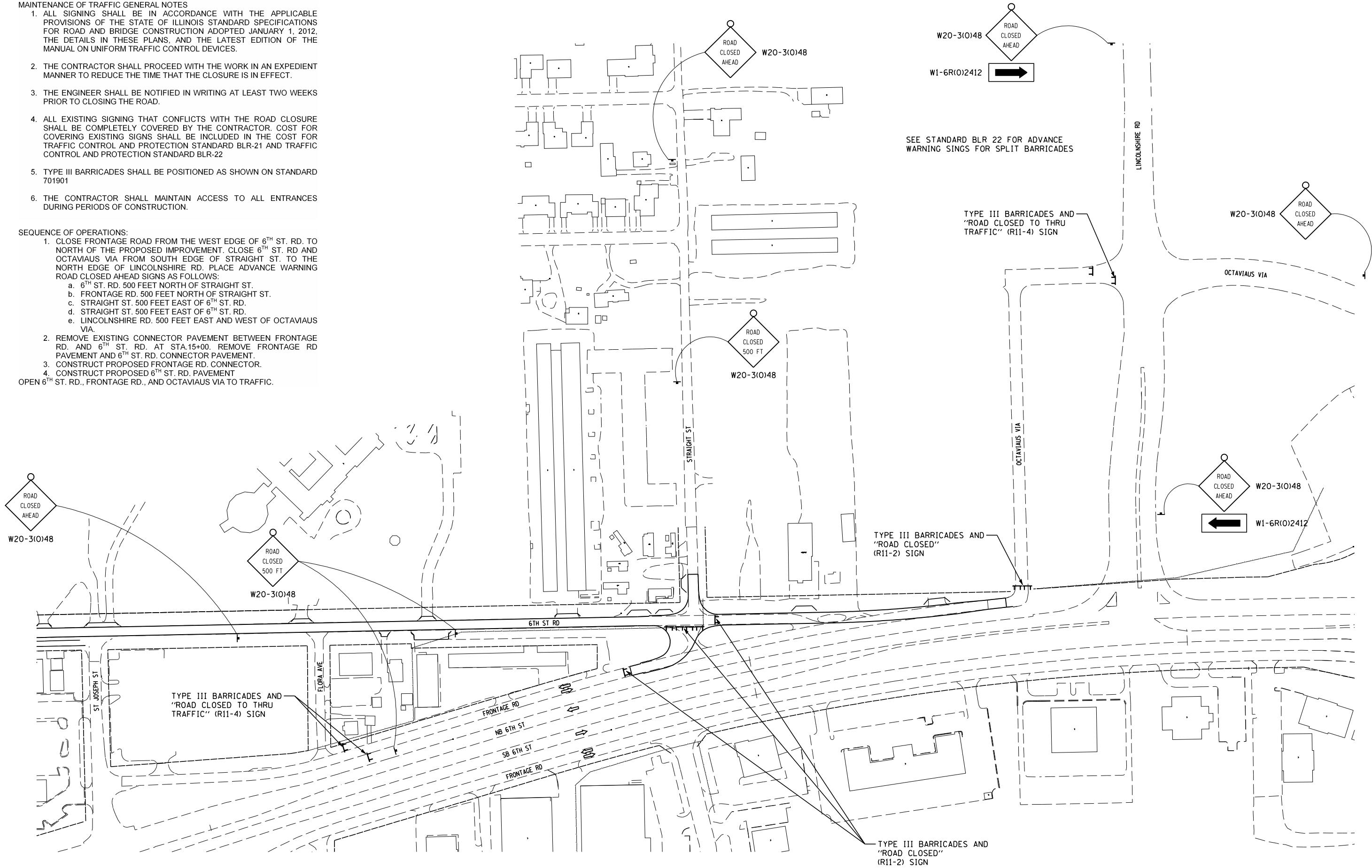


MAINTENANCE OF TRAFFIC GENERAL NOTES

1. ALL SIGNING SHALL BE IN ACCORDANCE WITH THE APPLICABLE PROVISIONS OF THE STATE OF ILLINOIS STANDARD SPECIFICATIONS FOR ROAD AND BRIDGE CONSTRUCTION ADOPTED JANUARY 1, 2012, THE DETAILS IN THESE PLANS, AND THE LATEST EDITION OF THE MANUAL ON UNIFORM TRAFFIC CONTROL DEVICES.
2. THE CONTRACTOR SHALL PROCEED WITH THE WORK IN AN EXPEDIENT MANNER TO REDUCE THE TIME THAT THE CLOSURE IS IN EFFECT.
3. THE ENGINEER SHALL BE NOTIFIED IN WRITING AT LEAST TWO WEEKS PRIOR TO CLOSING THE ROAD.
4. ALL EXISTING SIGNING THAT CONFLICTS WITH THE ROAD CLOSURE SHALL BE COMPLETELY COVERED BY THE CONTRACTOR. COST FOR COVERING EXISTING SIGNS SHALL BE INCLUDED IN THE COST FOR TRAFFIC CONTROL AND PROTECTION STANDARD BLR-21 AND TRAFFIC CONTROL AND PROTECTION STANDARD BLR-22
5. TYPE III BARRICADES SHALL BE POSITIONED AS SHOWN ON STANDARD 701901
6. THE CONTRACTOR SHALL MAINTAIN ACCESS TO ALL ENTRANCES DURING PERIODS OF CONSTRUCTION.

SEQUENCE OF OPERATIONS:

1. CLOSE FRONTAGE ROAD FROM THE WEST EDGE OF 6TH ST. RD. TO NORTH OF THE PROPOSED IMPROVEMENT. CLOSE 6TH ST. RD AND OCTAVIAUS VIA FROM SOUTH EDGE OF STRAIGHT ST. TO THE NORTH EDGE OF LINCOLNSHIRE RD. PLACE ADVANCE WARNING ROAD CLOSED AHEAD SIGNS AS FOLLOWS:
 - a. 6TH ST. RD. 500 FEET NORTH OF STRAIGHT ST.
 - b. FRONTAGE RD. 500 FEET NORTH OF STRAIGHT ST.
 - c. STRAIGHT ST. 500 FEET EAST OF 6TH ST. RD.
 - d. STRAIGHT ST. 500 FEET EAST OF 6TH ST. RD.
 - e. LINCOLNSHIRE RD. 500 FEET EAST AND WEST OF OCTAVIAUS VIA.
 2. REMOVE EXISTING CONNECTOR PAVEMENT BETWEEN FRONTAGE RD. AND 6TH ST. RD. AT STA.15+00. REMOVE FRONTAGE RD PAVEMENT AND 6TH ST. RD. CONNECTOR PAVEMENT.
 3. CONSTRUCT PROPOSED FRONTAGE RD. CONNECTOR.
 4. CONSTRUCT PROPOSED 6TH ST. RD. PAVEMENT
- OPEN 6TH ST. RD., FRONTAGE RD., AND OCTAVIAUS VIA TO TRAFFIC.



JOB = 2265.11
 FILE NAME = 0672F74-sht-top.dgn
 PLOT SCALE = 200.0000' / IN.
 PLOT DATE = 2/4/2013

DESIGNED - NAK
 DRAWN - SJS
 CHECKED - NAK
 DATE - 10/8/2012

REVISED -
 REVISED -
 REVISED -
 REVISED -

**STATE OF ILLINOIS
 DEPARTMENT OF TRANSPORTATION**

**MAINTENANCE OF TRAFFIC
 ROAD CLOSURE PLAN**

SCALE: SHEET NO. OF SHEETS STA. TO STA.

S.B.I. RTE.	SECTION	COUNTY	TOTAL SHEETS	SHEET NO.
126	(110) I-2	SANGAMON	93	56
FED. ROAD DIST. NO.		ILLINOIS FED. AID PROJECT		

CONTRACT NO. 72F74