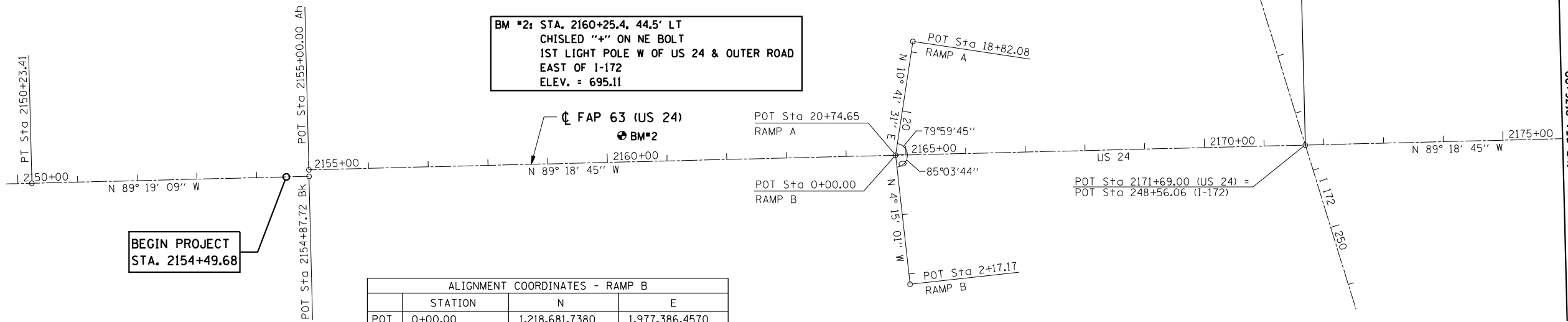


ALIGNMENT COORDINATES - RAMP A			
	STATION	N	E
POT	18+82.08	1,218,492.5110	1,977,350.7300
POT	20+74.65	1,218,681.7380	1,977,386.4570

**BM #2: STA. 2160+25.4, 44.5' LT  
CHISLED "+" ON NE BOLT  
1ST LIGHT POLE W OF US 24 & OUTER ROAD  
EAST OF I-172  
ELEV. = 695.11**



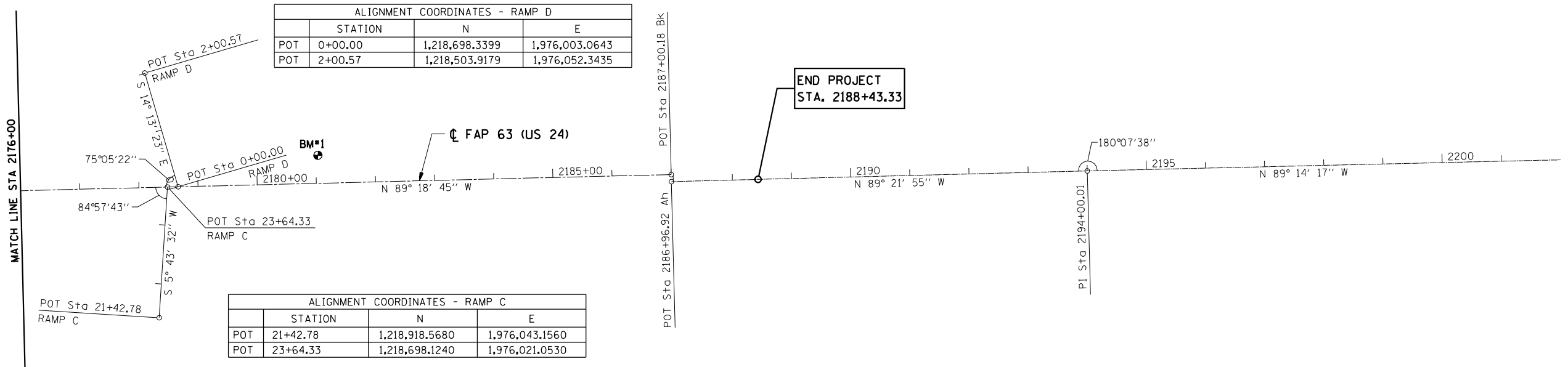
**BEGIN PROJECT  
STA. 2154+49.68**

ALIGNMENT COORDINATES - RAMP B			
	STATION	N	E
POT	0+00.00	1,218,681.7380	1,977,386.4570
POT	2+17.17	1,218,898.3100	1,977,370.3620

ALIGNMENT COORDINATES - FAP 63 (US 24)			
	STATION	N	E
PT	2150+23.41	1,218,675.3559	1,978,833.6692
POT	2154+87.72 Bk	1,218,680.8723	1,978,369.3875
POT	2155+00.00 Ah	1,218,669.9430	1,978,369.2660
POT	2187+00.18 Bk	1,218,708.3460	1,975,169.3140
POT	2186+96.92 Ah	1,218,720.2583	1,975,169.4570
PI	2194+00.01	1,218,728.0474	1,974,466.4139

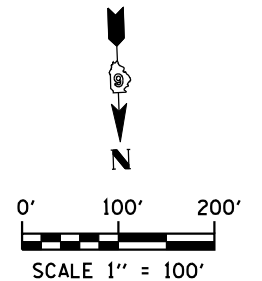
**BM #1: STA. 2181+03.8, 47.4' LT  
CHISLED "+" ON NW BOLT  
1ST LIGHT POLE W OF CONC CULVERT  
WEST SIDE OF I-172 & US 24  
ELEV. = 676.78**

ALIGNMENT COORDINATES - RAMP D			
	STATION	N	E
POT	0+00.00	1,218,698.3399	1,976,003.0643
POT	2+00.57	1,218,503.9179	1,976,052.3435



**END PROJECT  
STA. 2188+43.33**

ALIGNMENT COORDINATES - RAMP C			
	STATION	N	E
POT	21+42.78	1,218,918.5680	1,976,043.1560
POT	23+64.33	1,218,698.1240	1,976,021.0530



FILE NAME =	USER NAME = ebb	DESIGNED -	REVISED -
ca:\08files\080224\wo 2 - us 24 over frazier creek - roadway plans\us 24 & i-172\code\DRAWN\0672F76-sh1-Align.dgn		CHECKED -	REVISED -
		DATE -	REVISED -

**STATE OF ILLINOIS  
DEPARTMENT OF TRANSPORTATION**

<b>HORIZONTAL ALIGNMENT</b>	
SCALE: 1"=100'	SHEET NO. 1 OF 1 SHEETS STA. 2150+00 TO STA. 2202+00

F.A.P. RTE.	SECTION	COUNTY	TOTAL SHEETS	SHEET NO.
63	(I)RS-6	ADAMS	24	15
CONTRACT NO. 72F76				
FED. ROAD DIST. NO. 6 ILLINOIS FED. AID PROJECT				