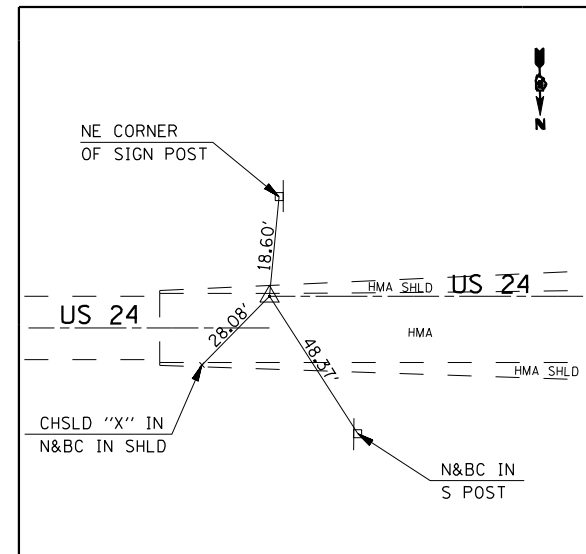
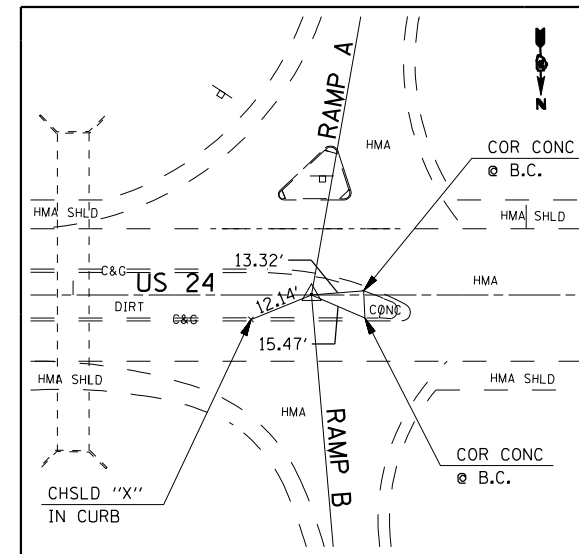


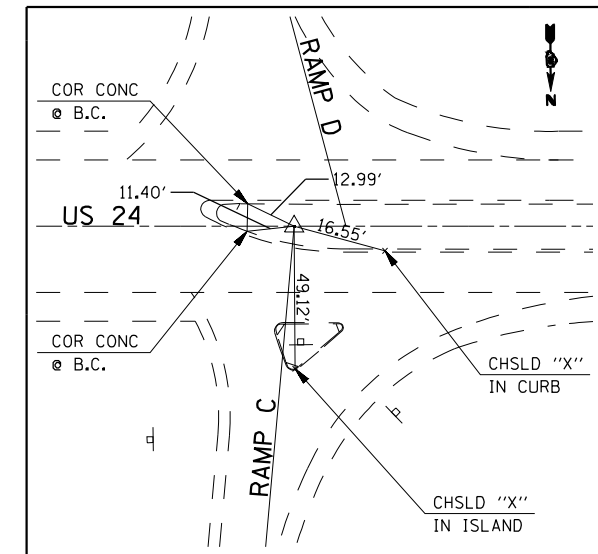
P.O.T. STA. 2154+87.72
(SET PK W/CHSLD "X")



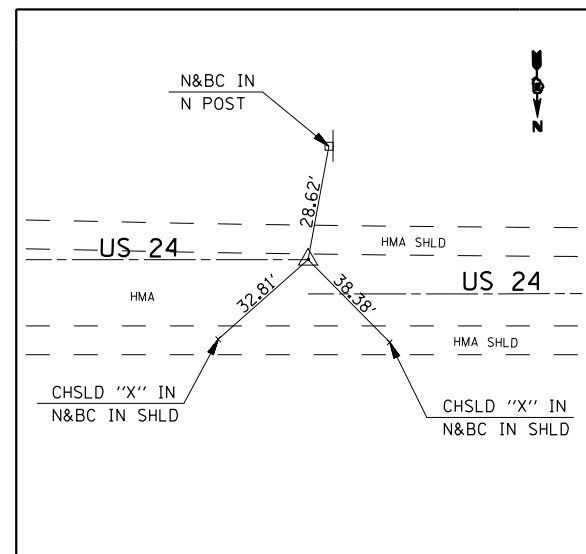
P.O.T. STA. 2155+00.00
(SET PK W/CHSLD "X")



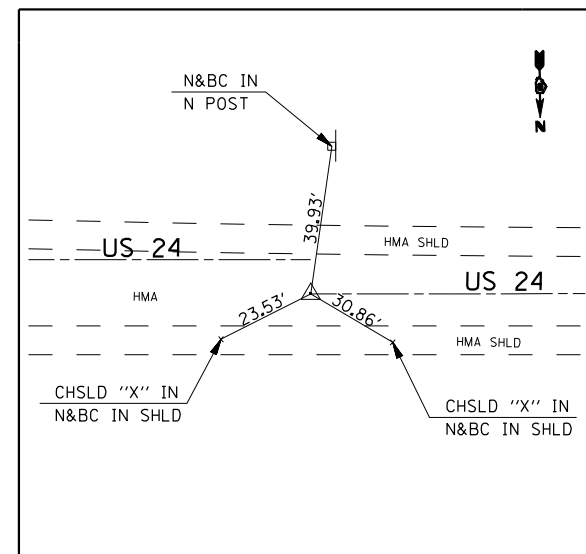
P.O.T. STA. 2164+82.88
(BURIED #5 REBAR W/CAP)



P.O.T. STA. 2178+48.38
(FLUSH #5 REBAR W/CAP)



P.O.T. STA. 2187+00.18
(SET PK W/CHSLD "X")



P.O.T. STA. 2186+96.92
(SET PK W/CHSLD "X")

FILE NAME =	USER NAME = ebb	DESIGNED -	REVISED -
qa\08files\080224\wo 2 - us 24 over frazier creek - roadway plans\us 24 & i-172\code\DRAWING\0672F76-shd-Control Ties.dgn		DRAWN -	REVISED -
	PLOT SCALE = 200.0000' / IN.	CHECKED -	REVISED -
	PLOT DATE = 10/16/2012	DATE -	REVISED -

**STATE OF ILLINOIS
DEPARTMENT OF TRANSPORTATION**

HORIZONTAL CONTROL TIES

SCALE: none SHEET NO. 1 OF 1 SHEETS STA. TO STA.

F.A.P. RTE.	SECTION	COUNTY	TOTAL SHEETS	SHEET NO.
63	(1)RS-6	ADAMS	24	16
CONTRACT NO. 72F76				
<small>FED. ROAD DIST. NO. 6 ILLINOIS FED. AID PROJECT</small>				