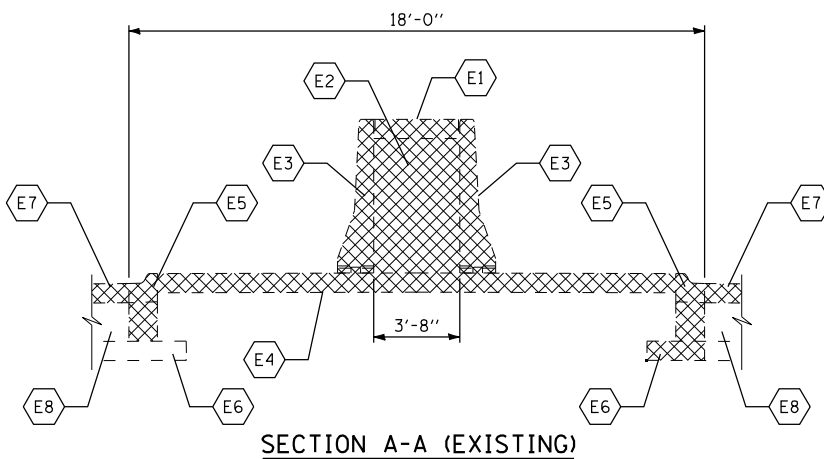


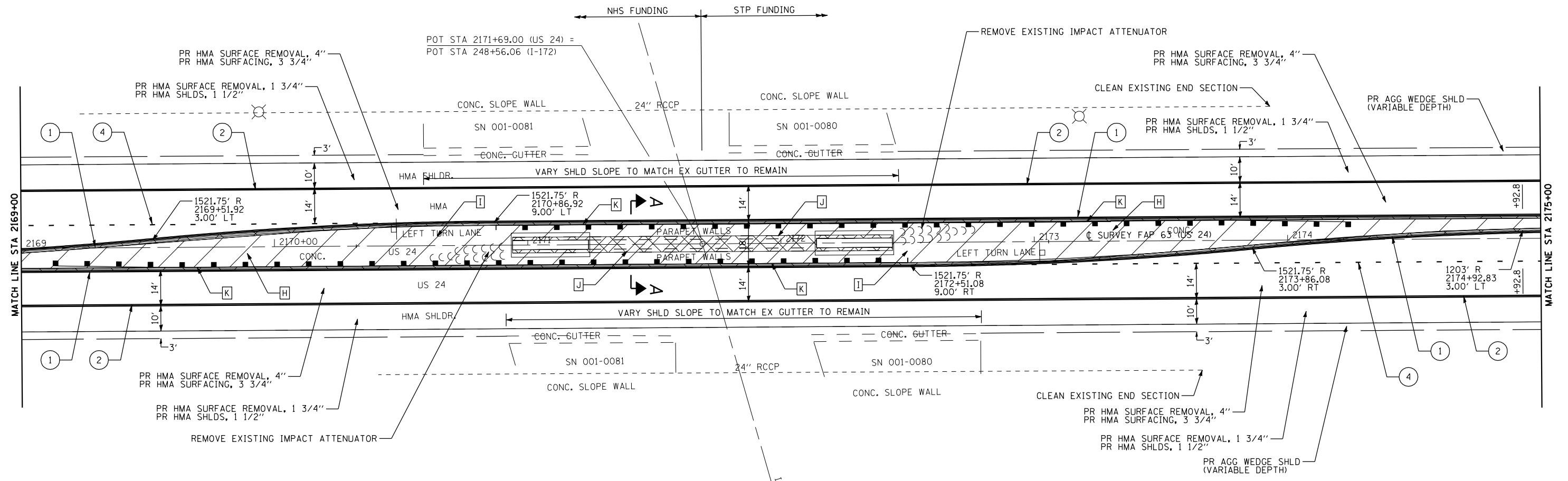
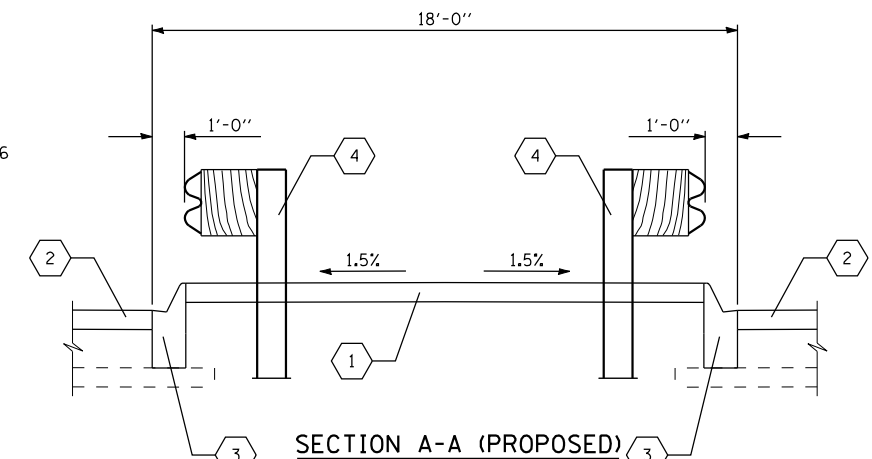
EXISTING

- E1 EXISTING 4" CONCRETE CAP TO BE REMOVED COST INCLUDED IN CONCRETE BARRIER REMOVAL
- E2 EXISTING CA-11 TO BE REMOVED COST INCLUDED IN CONCRETE BARRIER REMOVAL
- E3 EXISTING CONCRETE BARRIER, SINGLE FACE, 32" HEIGHT TO BE REMOVED
- E4 EXISTING CONCRETE MEDIAN SURFACE, 4" TO BE REMOVED
- E5 EXISTING COMBINATION CONCRETE CURB & GUTTER, TYPE M-2.06 TO BE REMOVED
- E6 EXISTING SUB-BASE GRANULAR MATERIAL, TYPE A, 4"
- E7 EXISTING HMA SURFACING, TO BE REMOVED
- E8 EXISTING PCC PVMT, 9"



PROPOSED

- 1 CONCRETE MEDIAN SURFACE, 4"
- 2 HMA SURFACING, 3 3/4"
- 3 COMBINATION CONCRETE CURB & GUTTER, TYPE M-4.06 (STD 606001)
- 4 GUARDRAIL (SEE SCHEDULE)

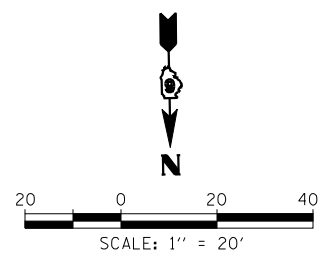


- H— EX C&G / MEDIAN SURFACE REMOVAL
PR CONC MEDIAN SURFACE, 4"
PR C&G, TY M-4.06 (BOTH SIDES)
(SEE SHT 22 FOR LAYOUT INFORMATION)
- I— EX C&G / MEDIAN SURFACE REMOVAL
PR CONC MEDIAN SURFACE, 4"
PR C&G, TY M-4.06 (BOTH SIDES)
- J— EX C&G / MEDIAN SURFACE / BARRIER WALL REMOVAL
PR CONC MEDIAN SURFACE, 4"
PR C&G, TY M-4.06 (BOTH SIDES)
(SEE SECTION A-A ON THIS SHT)
- K— PR GUARDRAIL (SEE SCHEDULES)

ALL ELEVATIONS SHALL BE DETERMINED IN THE FIELD BY THE ENGINEER

PAVEMENT MARKING LEGEND

- ① PR MODIFIED URETHANE PAVEMENT MARKING, LINE 5" (SOLID YELLOW)
- ② PR MODIFIED URETHANE PAVEMENT MARKING, LINE 5" (SOLID WHITE)
- ③ PR MODIFIED URETHANE PAVEMENT MARKING, LINE 6" (SOLID WHITE)
- ④ PR MODIFIED URETHANE PAVEMENT MARKING, LINE 6" (6' SKIP, 2' DASH WHITE)
- ⑤ PR MODIFIED URETHANE PAVEMENT MARKING, LINE 8" (SOLID WHITE)
- ⑥ PR MODIFIED URETHANE PAVEMENT MARKING, LINE 12" (SOLID WHITE) (15' TYP SPACING)
- ⑦ PR MODIFIED URETHANE PAVEMENT MARKING, LINE 12" (SOLID YELLOW) (30' TYP SPACING)
- ⑧ PR PREFORMED PLASTIC PAVEMENT MARKING, TYPE B (INLAID), LINE 24" (SOLID WHITE) (15' FROM EOP)
- ⑨ PR PREFORMED PLASTIC PAVEMENT MARKING, TYPE B (INLAID), LETTERS AND SYMBOLS (SOLID WHITE)
- ▷ PR RAISED REFLECTIVE PAVEMENT MARKERS, ONE-WAY CRYSTAL
- ▶ PR RAISED REFLECTIVE PAVEMENT MARKERS, ONE-WAY AMBER
- ◀ PR RAISED REFLECTIVE PAVEMENT MARKERS, TWO-WAY AMBER



FILE NAME =	USER NAME = ebb	DESIGNED -	REVISED -	STATE OF ILLINOIS DEPARTMENT OF TRANSPORTATION	PLAN SHEET	F.A.P. RTE.	SECTION	COUNTY	TOTAL SHEETS	SHEET NO.
qa:\08files\080224\wo 2 - us 24 over frazier creek - roadway plans\us 24 & i-172\code\DRAWN\0672F76-sht-plan03.dgn		CHECKED -	REVISED -			63	(I)RS-6	ADAMS	24	19
PLOT SCALE = 40:0.0000 ' / IN.		DATE -	REVISED -			CONTRACT NO. 72F76				
PLOT DATE = 10/16/2012						FED. ROAD DIST. NO. 6 ILLINOIS FED. AID PROJECT				