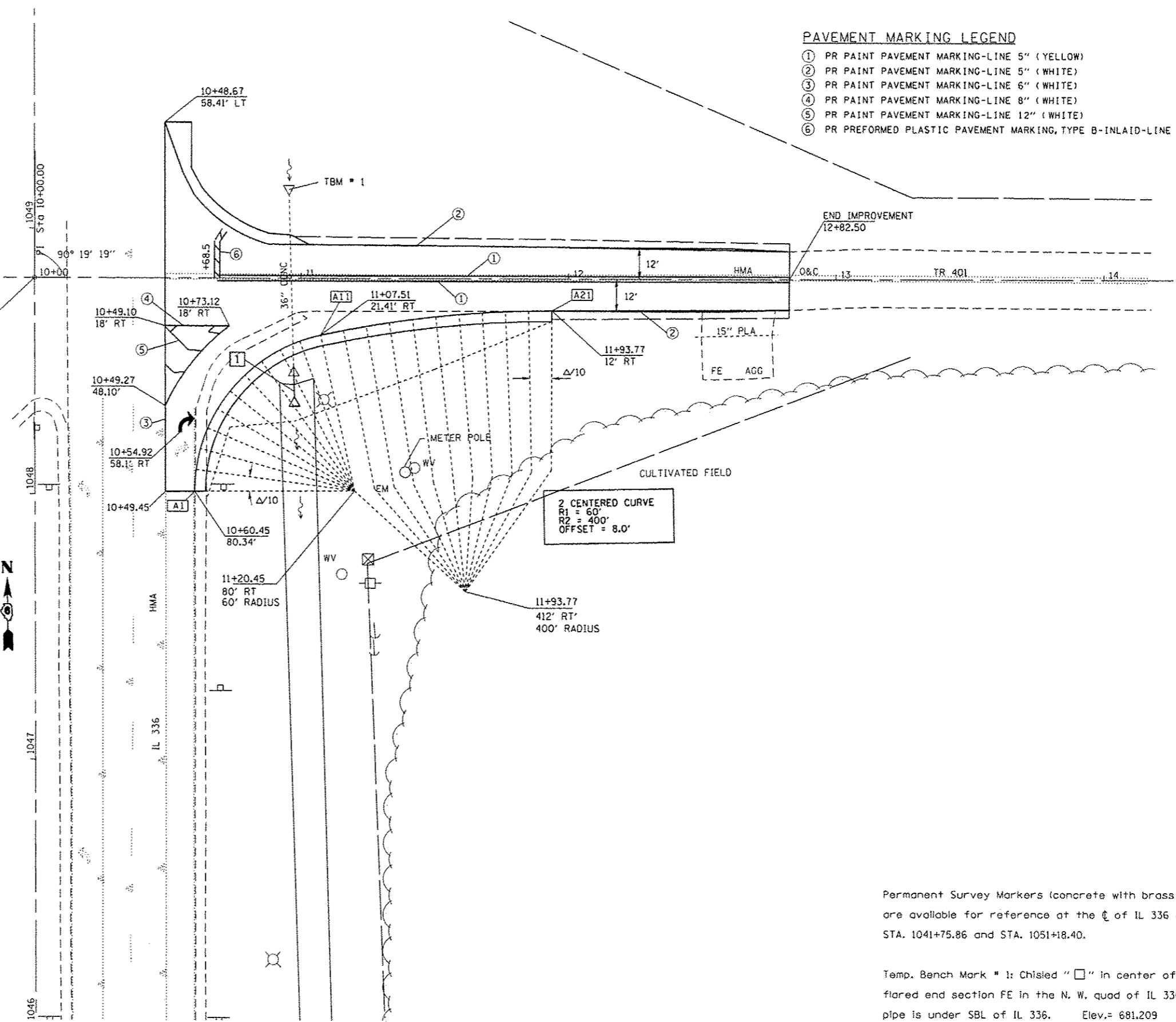


PAVEMENT MARKING LEGEND

- ① PR PAINT PAVEMENT MARKING-LINE 5" (YELLOW)
- ② PR PAINT PAVEMENT MARKING-LINE 5" (WHITE)
- ③ PR PAINT PAVEMENT MARKING-LINE 6" (WHITE)
- ④ PR PAINT PAVEMENT MARKING-LINE 8" (WHITE)
- ⑤ PR PAINT PAVEMENT MARKING-LINE 12" (WHITE)
- ⑥ PR PREFORMED PLASTIC PAVEMENT MARKING, TYPE B-INLAID-LINE 24" (WHITE)

① STA. 10+97.56 RT
 REMOVE EX END SECTION
 PR PIPE CULVERT, CL A, T1, 36" x 12'
 USFL= 681.48, STA. 10+97.39, 33.27' RT
 DSFL= 681.42, STA. 10+97.74, 45.26' RT
 PRC FLARED END SECTION 36"

	STATION	OFFSET	ELEVATION
A1	10+60.45	80.34	686.48
A2	10+60.96	72.21	686.50
A3	10+62.56	64.22	686.49
A4	10+65.24	56.52	686.48
A5	10+68.93	49.25	686.41
A6	10+73.57	42.56	686.34
A7	10+79.07	36.55	686.26
A8	10+85.34	31.34	686.18
A9	10+92.26	27.04	686.09
A10	10+99.69	23.71	686.01
A11	11+07.51	21.41	686.00
A12	11+16.02	19.63	685.99
A13	11+24.57	18.03	685.98
A14	11+33.15	16.62	685.98
A15	11+41.75	15.40	685.97
A16	11+50.39	14.36	685.97
A17	11+59.04	13.51	685.92
A18	11+67.71	12.85	685.87
A19	11+76.39	12.38	685.82
A20	11+85.08	12.09	685.77
A21	11+93.77	12.00	685.71



Permanent Survey Markers (concrete with brass disk) are available for reference at the center of IL 336 at STA. 1041+75.86 and STA. 1051+18.40.

Temp. Bench Mark # 1: Chisled "□" in center of 24" RCCP flared end section FE in the N. W. quad of IL 336 & TR 401; pipe is under SBL of IL 336. Elev.= 681.209