

STATE OF ILLINOIS
DEPARTMENT OF TRANSPORTATION
DIVISION OF HIGHWAYS
**PROPOSED
CONTRACT MAINTENANCE**

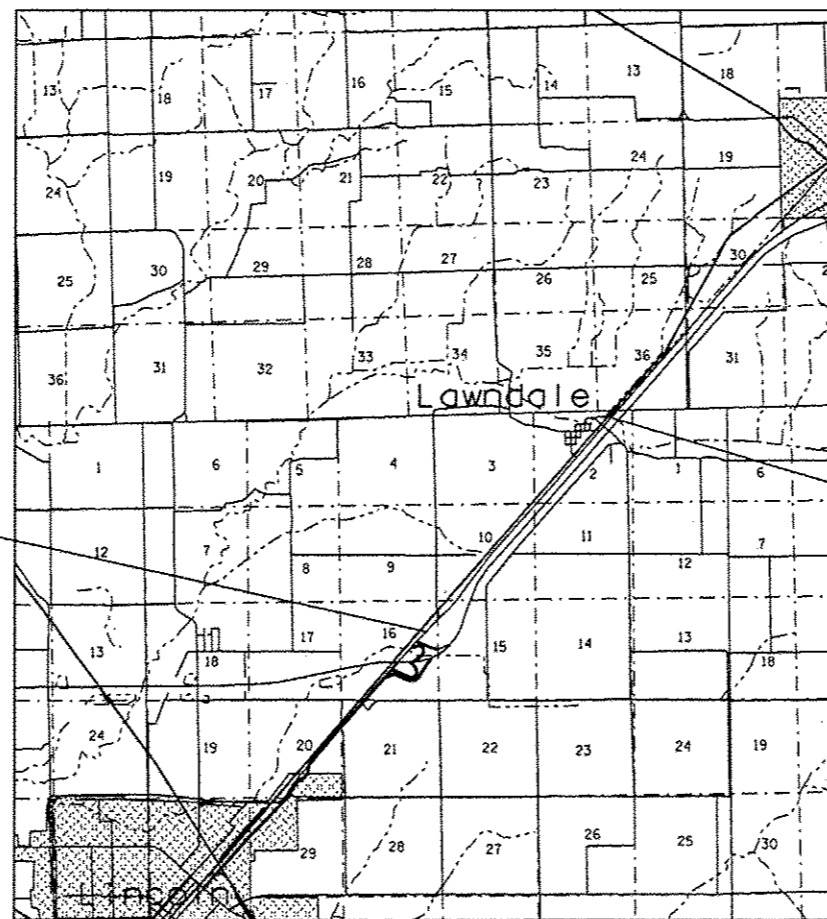
FOR INDEX OF SHEETS, SEE SHEET NO. 2

FAS 1773 (I-55 FR WEST)
SECTION (21&22)I-1&Q-5

LOGAN COUNTY

C-96-027-13

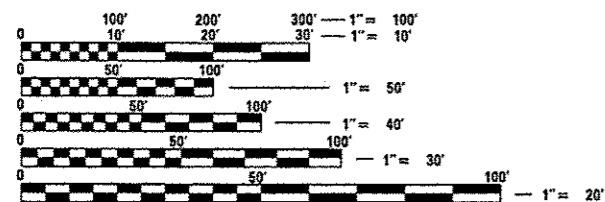
R 2 W



BEGIN PROJECT
STA. 173 + 61.00

END PROJECT
STA. 280 + 25.00

ADT = 1,000(90)



FULL SIZE PLANS HAVE BEEN PREPARED USING STANDARD ENGINEERING SCALES. REDUCED SIZED PLANS WILL NOT CONFORM TO STANDARD SCALES. IN MAKING MEASUREMENTS ON REDUCED PLANS, THE ABOVE SCALES MAY BE USED.

J.U.L.I.E.
JOINT UTILITY LOCATION INFORMATION FOR EXCAVATION
1-800-892-0123
OR 811

PLAN AND CONTRACT TECHNICIAN
TIMOTHY SHARP (217)782-7743

CONTRACT NO. 72F94

GROSS LENGTH = 10,664.00 FT. = 2.020 MILES

F.A.S. RTE.	SECTION	COUNTY	TOTAL SHEETS	SHEET NO.
1773	(21&22)I-1&Q-5	LOGAN	6	1
FED. ROAD DIST. NO.	ILLINOIS	CONTRACT NO. 72F94		

D-96-027-13



STATE OF ILLINOIS
DEPARTMENT OF TRANSPORTATION
DIVISION OF HIGHWAYS

SUBMITTED February 15, 2013
Rep. Z. Osman
DEPUTY DIRECTOR OF HIGHWAYS, REGION ENGINEER

March 22, 2013
John D. Caramore, P.E.
ENGINEER OF DESIGN AND ENVIRONMENT

March 22, 2013
Omur Osman, P.E.
DIRECTOR OF HIGHWAYS, CHIEF ENGINEER

**PRINTED BY THE AUTHORITY
OF THE STATE OF ILLINOIS**