

04-26-13 LETTING ITEM 154

STATE OF ILLINOIS
 DEPARTMENT OF TRANSPORTATION
 DIVISION OF HIGHWAYS
**PROPOSED
 CONTRACT MAINTENANCE**

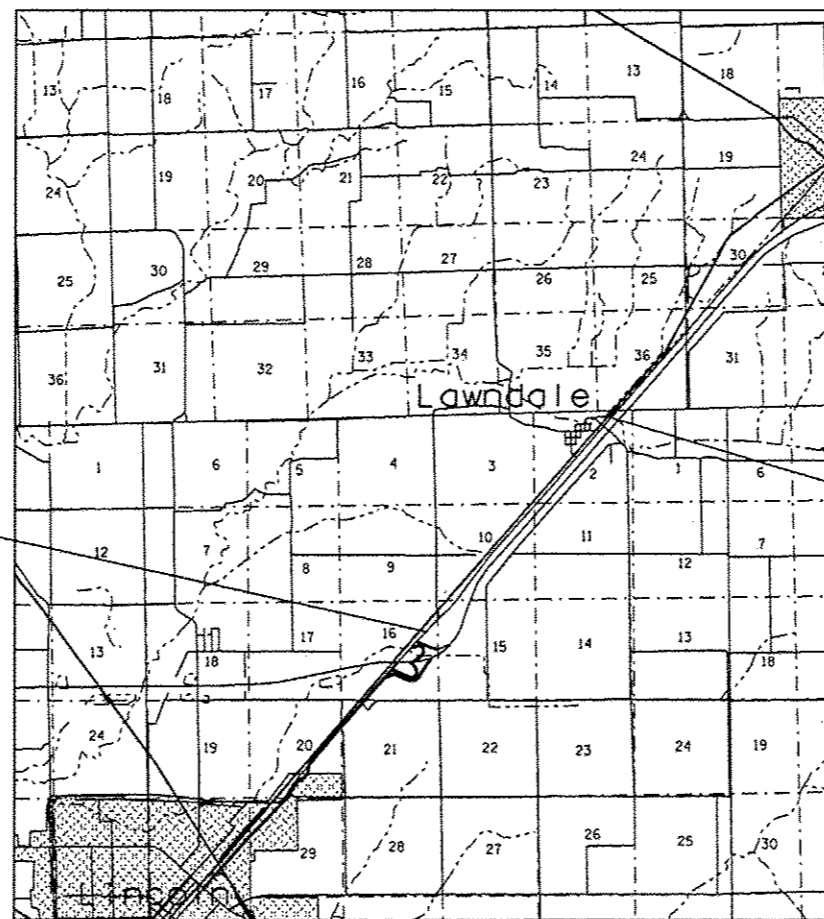
FOR INDEX OF SHEETS, SEE SHEET NO. 2

FAS 1773 (I-55 FR WEST)
 SECTION (21&22)I-1&Q-5

LOGAN COUNTY

C-96-027-13

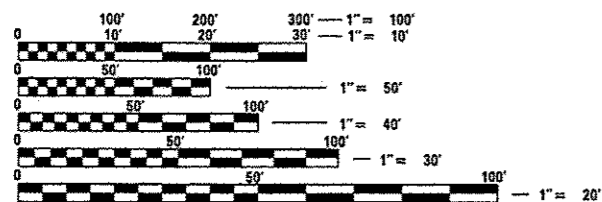
R 2 W



**BEGIN PROJECT
 STA. 173 + 61.00**

**END PROJECT
 STA. 280 + 25.00**

ADT = 1,000(90)



FULL SIZE PLANS HAVE BEEN PREPARED USING STANDARD ENGINEERING SCALES. REDUCED SIZED PLANS WILL NOT CONFORM TO STANDARD SCALES. IN MAKING MEASUREMENTS ON REDUCED PLANS, THE ABOVE SCALES MAY BE USED.

J.U.L.I.E.
 JOINT UTILITY LOCATION INFORMATION FOR EXCAVATION
 1-800-892-0123
 OR 811

PLAN AND CONTRACT TECHNICIAN
 TIMOTHY SHARP (217)782-7743

CONTRACT NO. 72F94

GROSS LENGTH = 10,664.00 FT. = 2.020 MILES

F.A.S. RTE.	SECTION	COUNTY	TOTAL SHEETS	SHEET NO.
1773	(21&22)I-1&Q-5	LOGAN	6	1
FED. ROAD DIST. NO.	ILLINOIS	CONTRACT NO. 72F94		

D-96-027-13



STATE OF ILLINOIS
 DEPARTMENT OF TRANSPORTATION
 DIVISION OF HIGHWAYS

SUBMITTED February 15, 2013
Rep. Z. Osman
 DEPUTY DIRECTOR OF HIGHWAYS, REGION ENGINEER

March 22, 2013
John D. Caramore, P.E.
 CHIEF ENGINEER OF DESIGN AND ENVIRONMENT

March 22, 2013
Omur Osman, P.E.
 DIRECTOR OF HIGHWAYS, CHIEF ENGINEER

**PRINTED BY THE AUTHORITY
 OF THE STATE OF ILLINOIS**

INDEX OF SHEETS

1. COVER
2. INDEX OF SHEETS, GENERAL NOTES, AND HIGHWAY STANDARDS
3. SUMMARY OF QUANTITIES
4. TYPICAL SECTIONS
5. SCHEDULES
6. PLAN

HIGHWAY STANDARDS

- 701001-02
- 701006-04
- 701201-04
- 701301-04
- 701306-03
- 701311-03
- 701501-06
- 701901-02
- 780001-03

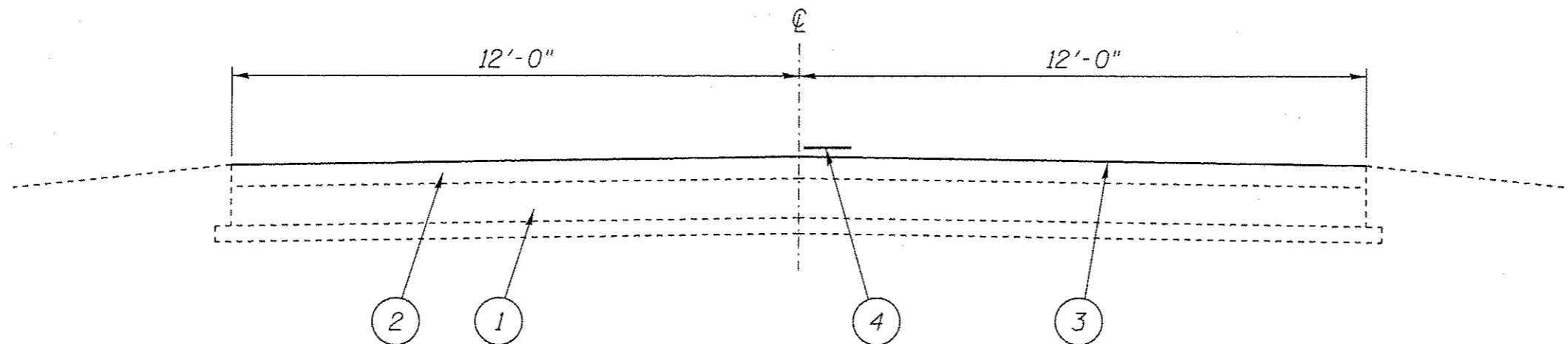
STATE OF ILLINOIS DEPARTMENT OF TRANSPORTATION DIVISION OF HIGHWAYS DISTRICT 6	
EXAMINED <u>2/13</u>	20 <u>13</u>
<u>Bill Byrum</u> ENGINEER OF OPERATIONS	
EXAMINED <u>JAN 29</u>	20 <u>13</u>
<u>Jimmy Funt</u> ENGINEER OF PROJECT IMPLEMENTATION	
EXAMINED <u>January 30</u>	20 <u>13</u>
<u>ARMJ</u> ENGINEER OF PROGRAM DEVELOPMENT	

GENERAL NOTES

1. THE CONTRACTOR SHALL GIVE IDOT OPERATIONS TWO WEEKS NOTICE PRIOR TO STARTING WORK IN ORDER FOR IDOT TO COMPLETE PATCHING AND R.R.P.M. COVERING.
2. ANY REFERENCE TO THE STANDARDS THROUGHOUT THE PLANS SHALL BE INTERPRETED TO BE THE LATEST STANDARDS OF THE DEPARTMENT AS INCLUDED IN THE PLANS.
3. NO EXCAVATION IS ANTICIPATED ON THIS PROJECT. SHOULD ANY EXCAVATION BE REQUIRED, J.U.L.I.E. SHALL BE NOTIFIED A MINIMUM OF 48 HOURS IN ADVANCE (800) 892-0123.
4. ALL CONFLICTING EXISTING STRIPING SHALL BE REMOVED.
5. ALL PAVEMENT MARKINGS, AND NO PASSING ZONES SHALL BE FIELD VERIFIED BY DISTRICT 6 OPERATIONS (785-5312) 14 DAYS PRIOR TO FINAL PAVEMENT MARKINGS.
6. FINAL PAVEMENT MARKINGS SHALL NOT BE APPLIED UNTIL A MINIMUM OF 10 DAYS AFTER SEAL COAT HAS BEEN PLACED.
7. ADDITIONAL BROOMING (UP TO 3 TIMES) SHALL BE REQUIRED AT THE DISCRETION OF THE ENGINEER, INCLUDING THE DAY OF PERMANENT PAVEMENT MARKING.
8. LOOSE ROCK/GRAVEL AND SUGGESTED 35 mph SIGNS SHALL BE ERECTED AND MAINTAINED UNTIL THE PERMANENT PAVEMENT MARKINGS HAVE BEEN COMPLETED.
9. TEMPORARY PAVEMENT MARKING - LINE 5" SHALL BE PAINT, MARKING TAPE WILL NOT BE ALLOWED.
10. BITUMINOUS SURFACE TREATMENT AGGREGATE SHALL CONSIST OF CRUSHED LIMESTONE AND THE GRADATION SHALL BE CA 15, CA 16 OR CA 20.

FILE NAME *	USER NAME * Sharptd	DESIGNED -	REVISED -	STATE OF ILLINOIS DEPARTMENT OF TRANSPORTATION	INDEX OF SHEETS, HIGHWAY STANDARDS AND GENERAL NOTES	F.A.S. RTE.	SECTION	COUNTY	TOTAL SHEETS	SHEET NO.	
cl:\pw\work\pwidot\sharptd\0338439\0672	94-shr\gennote.dgn	DRAWN -	REVISED -			1668	(21&22)-1&0-5	LOGAN	6	2	
	PLOT SCALE * 2.0000 / in.	CHECKED -	REVISED -			CONTRACT NO. 72F94					
Defaults	PLOT DATE * Feb-13-2013 07:28:37AM	DATE -	REVISED -			ILLINOIS FED. AID PROJECT					

CODE NO.	ITEM	UNIT	TOTAL QUANTITY	CONSTR. CODE
				100% STATE
				ROADWAY
				0005
				S. N.
67100100	MOBILIZATION	L SUM	1	1
70100450	TRAFFIC CONTROL AND PROTECTION, STANDARD 701201	L SUM	1	1
70100460	TRAFFIC CONTROL AND PROTECTION, STANDARD 701306	L SUM	1	1
70102620	TRAFFIC CONTROL AND PROTECTION, STANDARD 701501	L SUM	1	1
70300230	TEMPORARY PAVEMENT MARKING - LINE 5"	FOOT	2,864	2,864
78001120	PAINT PAVEMENT MARKING - LINE 5"	FOOT	2,864	2,864
X0326216	BITUMINOUS SURFACE TREATMENT (PREVENTIVE MAINTENANCE)	SQ YD	28,438	28,438



STA. 173+61 TO 280+25

LEGEND

- 1- EXIST. P.C.C. PAVEMENT 10"
- 2- EXIST. HOT-MIX ASPHALT SURFACE
- 3- PROP. BIT. SURF. TREATMENT (CL. A-1)
- 4- PAINT PAVEMENT MARKING - LINE 5"

FILE NAME *	USER NAME * Sharptd	DESIGNED -	REVISED -	STATE OF ILLINOIS DEPARTMENT OF TRANSPORTATION	TYPICAL SECTION	F.A.S. RTE.	SECTION	COUNTY	TOTAL SHEETS	SHEET NO.
	ci:\pw_work\pavdot\sharptd\0330439\067294.sht-tpj001.dgn	DRAWN -	REVISED -			1773	(21&221)-1&0-5	LOGAN	6	4
	PLOT SCALE * 3.0000 ' / in.	CHECKED -	REVISED -			CONTRACT NO. 72F94				
SHT_PLAN	PLOT DATE * Jan-16-2013 11:45:44AM	DATE -	REVISED -	SCALE:	SHEET 1 OF 1 SHEETS	STA.	TO STA.	(ILLINOIS) FED. AID PROJECT		

PAVEMENT MARKING SCHEDULE		
STATION	TYPE	PAINT PAV'T
		MRK - LINE 5"
		YELLOW
LT. & RT. STA. 173+61 TO 174+68	NO PASS	214 FT
STA. 174+68 TO 280+25	SKIP DASH	2,650 FT
TOTALS		2,864 FT



BEGIN PROJECT
STA. 173+61.00

END PROJECT
STA. 280+25.00

FILE NAME *	USER NAME * Sherptd	DESIGNED -	REVISED -	STATE OF ILLINOIS DEPARTMENT OF TRANSPORTATION	LOCATION MAP		F.A.S. RTE.	SECTION	COUNTY	TOTAL SHEETS	SHEET NO.	
c:\pwwork\pwwork\sherptd\08338439\0672	94-plans\1.dgn	DRAWN -	REVISED -		SCALE:	SHEET 1 OF 1 SHEETS	STA.	1773	(21&22)-1&0-5	LOGAN	6	6
SHT_PLAN	PLOT SCALE * 3.0000' / in.	CHECKED -	REVISED -		STA.	TO STA.	CONTRACT NO. 72F94		ILLINOIS FED. AID PROJECT			
	PLOT DATE * Jan-16-2013 11:47:39AM	DATE -	REVISED -									