

STATE OF ILLINOIS  
DEPARTMENT OF TRANSPORTATION  
DIVISION OF HIGHWAYS

**PROPOSED  
HIGHWAY PLANS**

VARIOUS ROUTES  
SECTION: D-7 WETLAND MITIGATION 2013

WETLAND MITIGATION  
LAWRENCE COUNTY

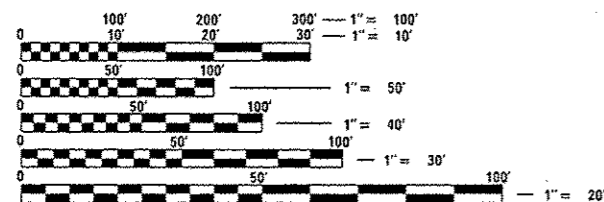
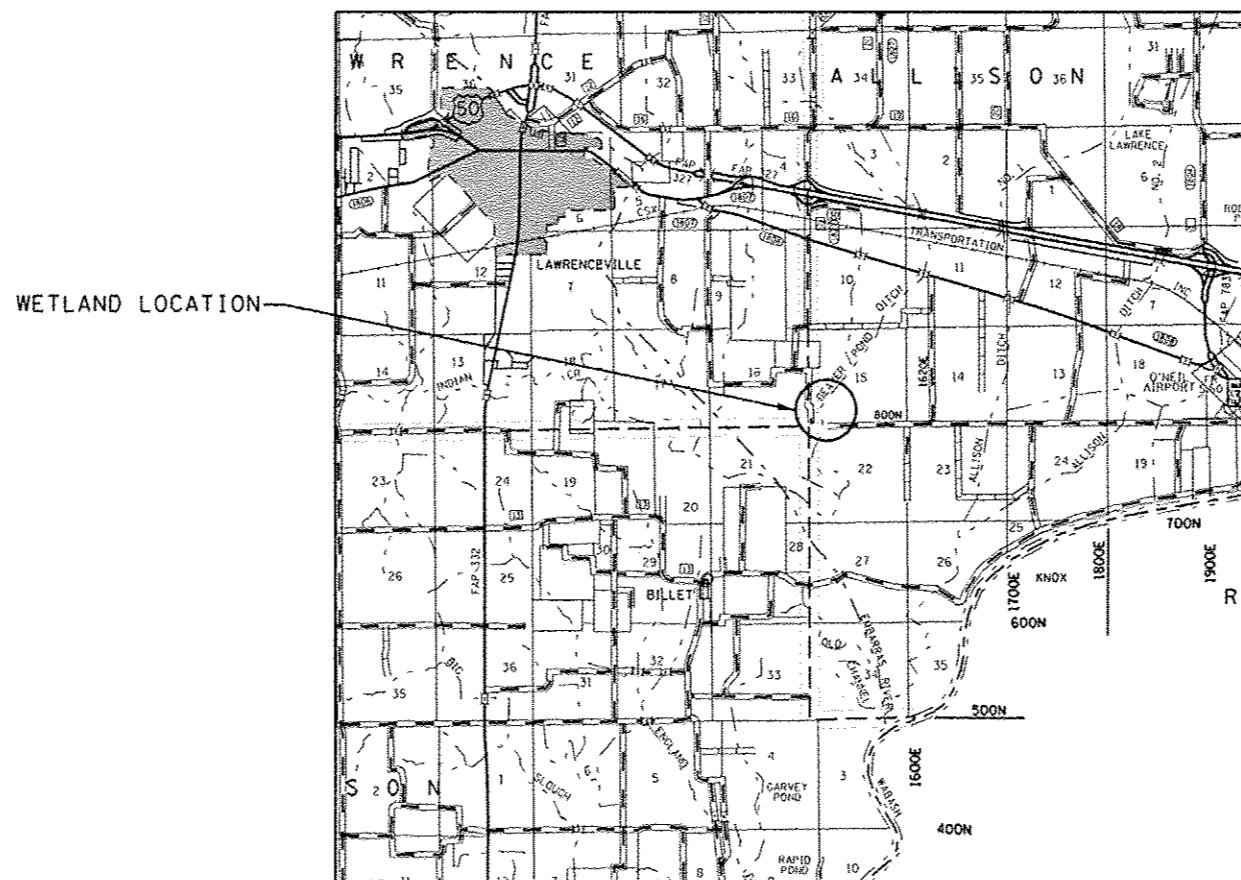
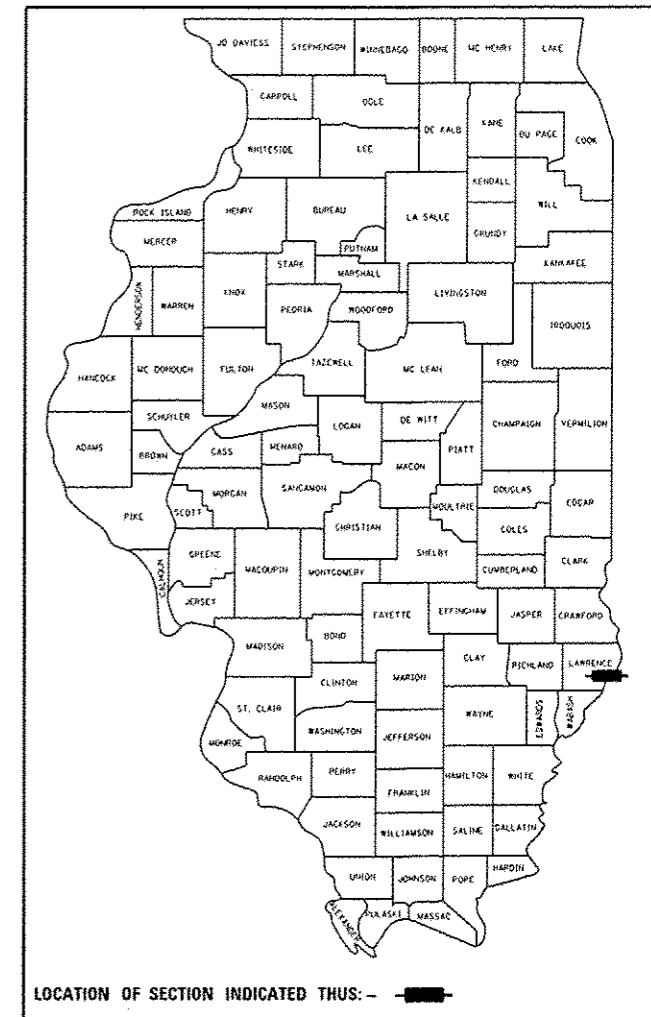
C-97-029-12

FOR INDEX OF SHEETS, SEE SHEET NO. 2

F.A. RTE.	SECTION	COUNTY	TOTAL SHEETS	SHEET NO.
		LAWRENCE	25	1
		ILLINOIS	CONTRACT NO. 74557	

\* D-7 WETLAND MITIGATION 2013

D-97-019-12



FULL SIZE PLANS HAVE BEEN PREPARED USING STANDARD ENGINEERING SCALES. REDUCED SIZED PLANS WILL NOT CONFORM TO STANDARD SCALES. IN MAKING MEASUREMENTS ON REDUCED PLANS, THE ABOVE SCALES MAY BE USED.

J.U.L.I.E.  
JOINT UTILITY LOCATION INFORMATION FOR EXCAVATION  
1-800-892-0123  
OR 811

PROJECT ENGINEER: MARK DAUGHERTY  
PROJECT MANAGER: JOYCE HEMMEN

CONTRACT NO. 74557

LOCATION:  
SW 1/4, SW 1/4, SECTION 15 AND  
W 1/2, NW 1/4, SECTION 22, T3N,  
R11W IN LAWRENCE TOWNSHIP

STATE OF ILLINOIS  
DEPARTMENT OF TRANSPORTATION  
DIVISION OF HIGHWAYS

SUBMITTED Jan 31 20 13  
Roger L. D'Amico  
DEPUTY DIRECTOR OF HIGHWAYS, REGION ENGINEER

March 13 20 13  
John D. Baranzelli P.E. & C.  
ENGINEER OF DESIGN AND ENVIRONMENT

March 13 20 13  
Omer Osman P.E. & C.  
DIRECTOR OF HIGHWAYS, CHIEF ENGINEER

PRINTED BY THE AUTHORITY  
OF THE STATE OF ILLINOIS