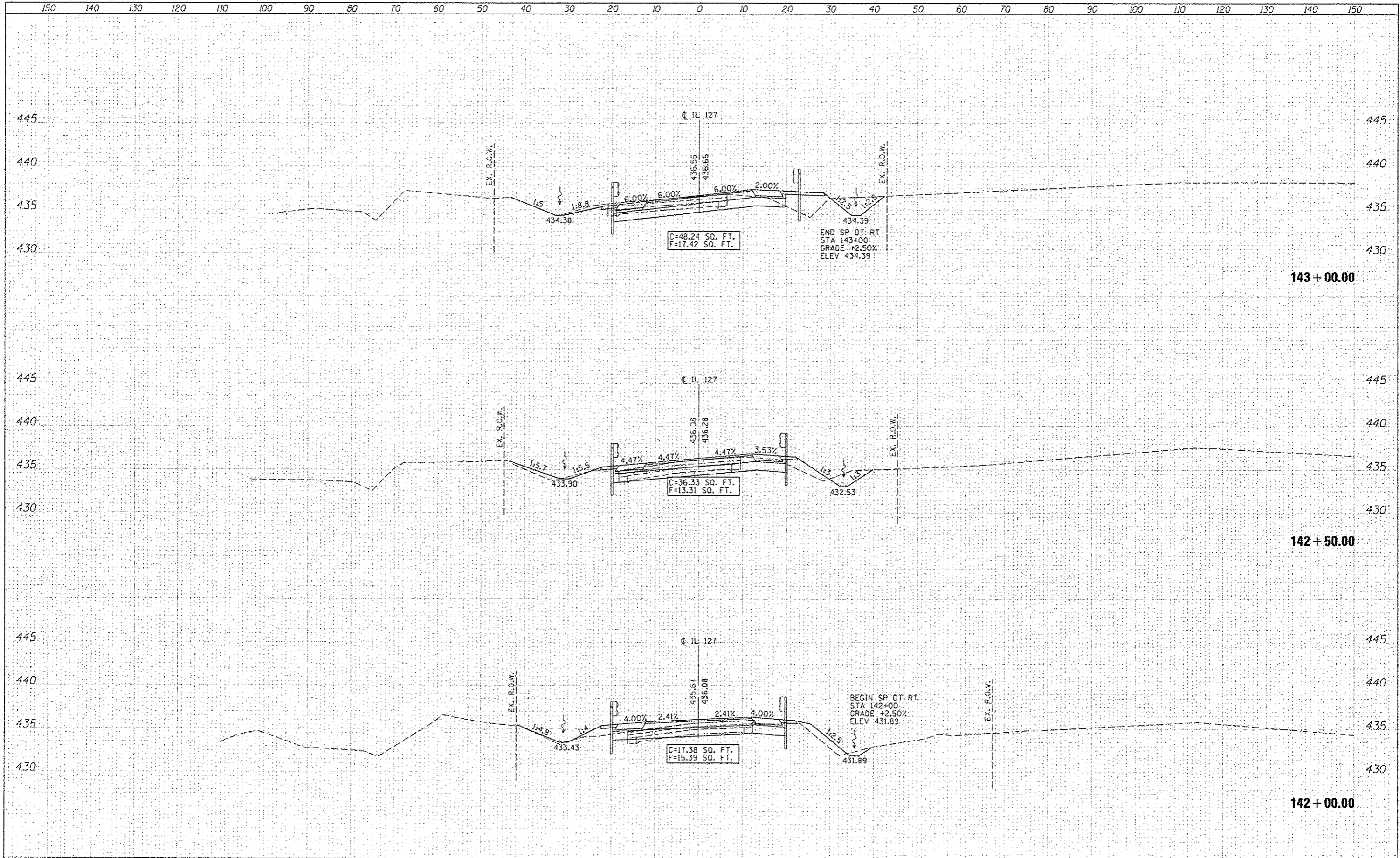


DATE	
BY	
DESIGNED	
DRAWN	
CHECKED	
DATE	
REVISIONS	
NO.	

DATE	
BY	
DESIGNED	
DRAWN	
CHECKED	
DATE	
REVISIONS	
NO.	



LIN ENGINEERING, LTD.
Consulting Engineers
Westwood Illinois

USER NAME	Plotted by Scott	DESIGNED	- RK	REVISED	SHEET 4-2-2013 SEW
PLOT SCALE	20,0000' / in.	DRAWN	- RK	REVISED	-
PLOT DATE	-	CHECKED	- SEW	REVISED	-
		DATE	- 2-1-2013	REVISED	-

STATE OF ILLINOIS
DEPARTMENT OF TRANSPORTATION

CROSS SECTIONS
IL 127 OVER KASKASKIA RIVER
SCALE: 1"=10'H, 5'V SHEET NO. 4 OF 25 SHEETS STA. 142+00.00 TO STA. 143+00.00

F.A.P. RTE.	SECTION	COUNTY	TOTAL SHEETS	SHEET NO.
42	1-1BR-2	CLINTON	159	138
			CONTRACT NO. 76479	
[ILLINOIS] FED. AID PROJECT				