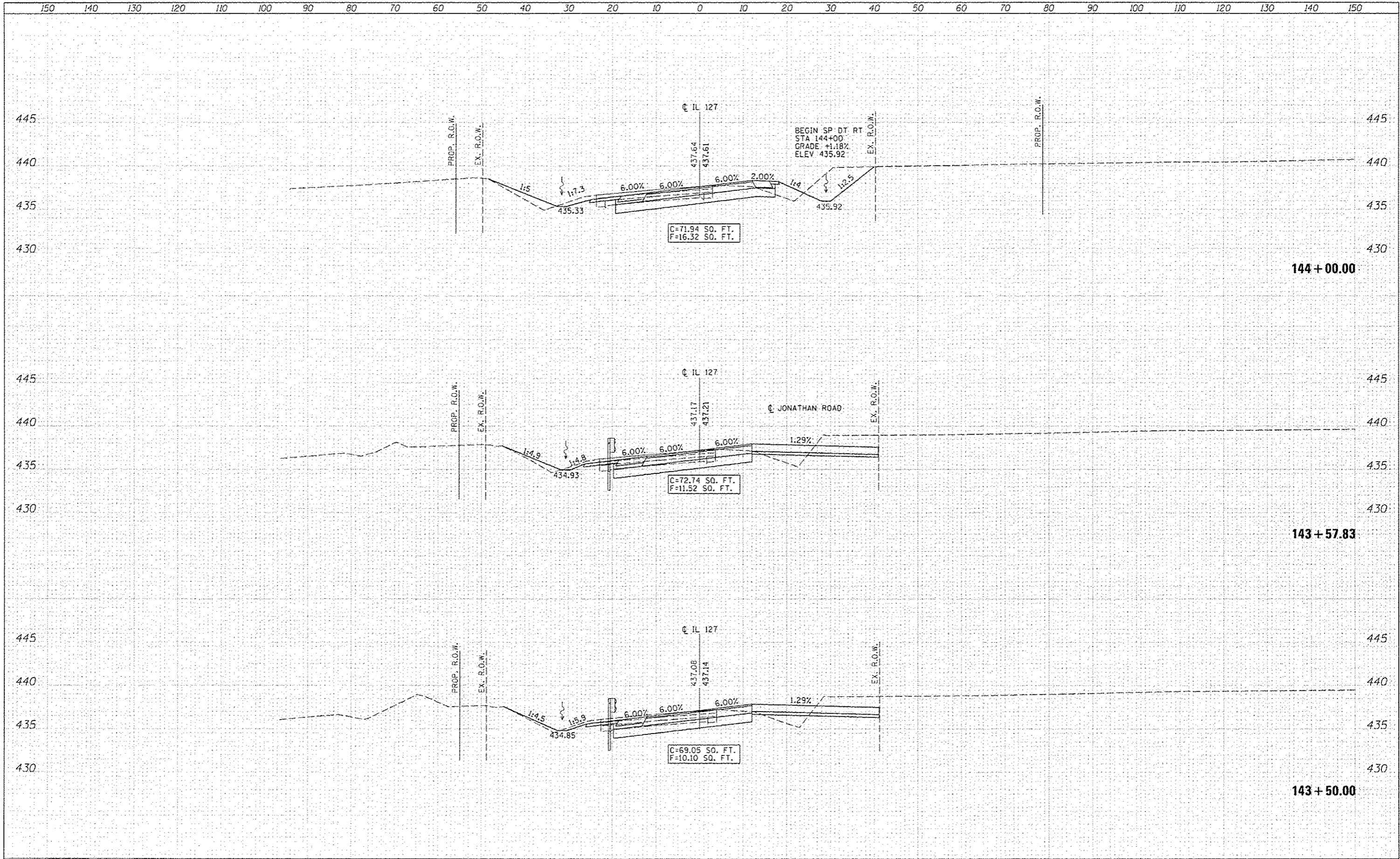


DATE	
BY	
STARTED	
SURVEY	
PLOTTED	
NOTE BOOK	
AREA	
NO.	

DATE	
BY	
STARTED	
SURVEY	
PLOTTED	
NOTE BOOK	
AREA	
NO.	



E LIN ENGINEERING, LTD.
Consulting Engineers
Waverly, Illinois

USER NAME	Plotted by Scott	DESIGNED	- RK	REVISED SHEET	4-2-2013 SEW
PLLOT SCALE	20,0000' / in.	DRAWN	- RK	REVISED	-
PLLOT DATE		CHECKED	- SEW	REVISED	-
		DATE	- 2-1-2013	REVISED	-

STATE OF ILLINOIS
DEPARTMENT OF TRANSPORTATION

CROSS SECTIONS	
IL 127 OVER KASKASKIA RIVER	
SCALE: 1"=10'H, 5'V	SHEET NO. 5 OF 25 SHEETS
STA. 143+50.00	TO STA. 144+00.00

F.A.P. RTE.	SECTION	COUNTY	TOTAL SHEETS	SHEET NO.
42	1-1BR-2	CLINTON	159	139
			CONTRACT NO.	76479
ILLINOIS FED. AID PROJECT				