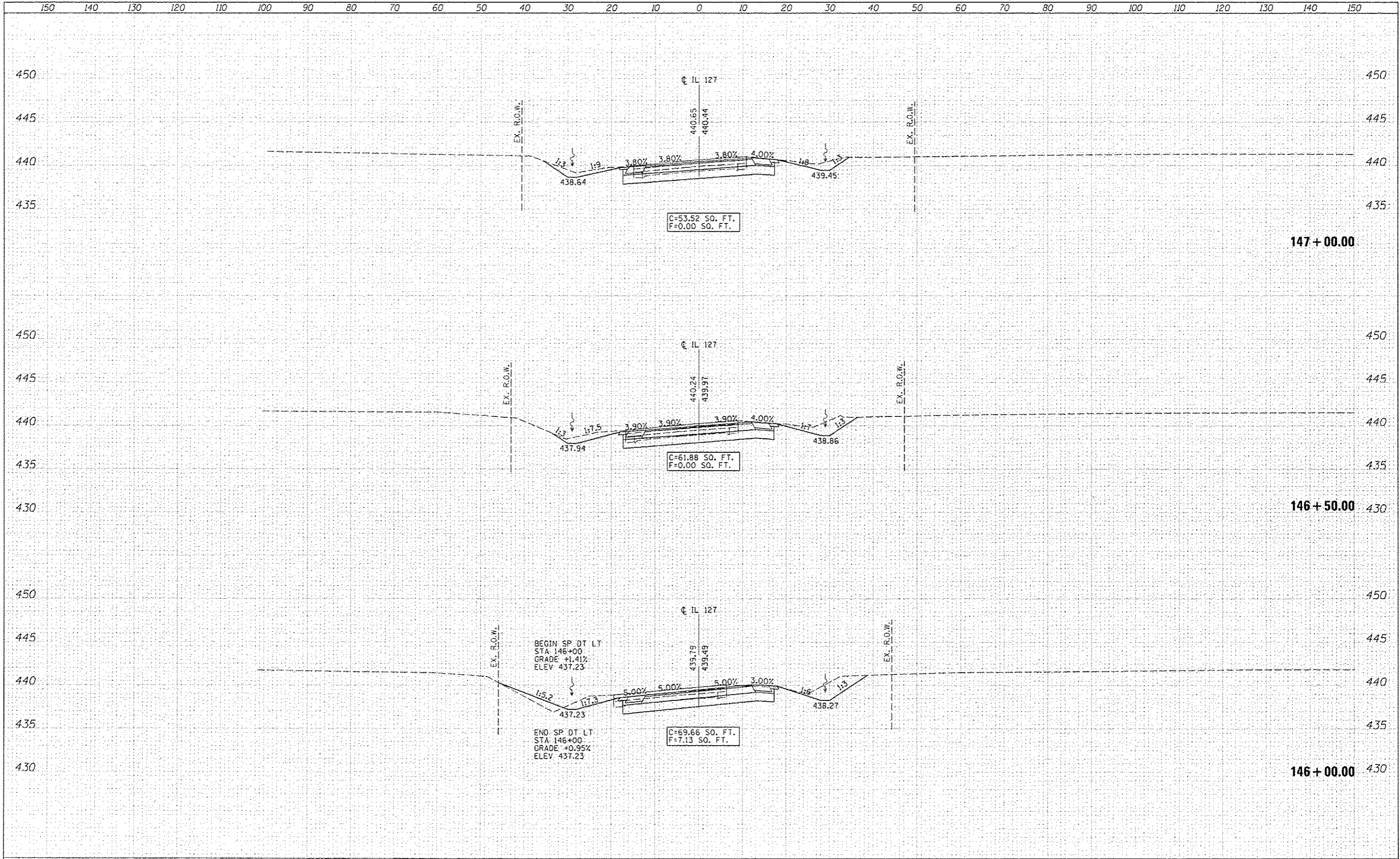


DATE	
BY	
FINI SURVEY	
PLOTTED	
NOTE BOOK	
AREAS CHECKED	
NO.	

DATE	
BY	
FINI SURVEY	
PLOTTED	
NOTE BOOK	
AREAS CHECKED	
NO.	



LIN ENGINEERING, LTD.
 Consulting Engineers
 Westmore Illinois

USER NAME	Plotted by Scott	DESIGNED	- RK	REVISED	SHEET 4-2-2013 SEW
PLLOT SCALE	20,0000' / in.	DRAWN	- RK	REVISED	-
PLLOT DATE		CHECKED	- SEW	REVISED	-
		DATE	- 2-1-2013	REVISED	-

STATE OF ILLINOIS
DEPARTMENT OF TRANSPORTATION

CROSS SECTIONS
IL 127 OVER KASKASKIA RIVER
 SCALE: 1"=10'H, 5'V SHEET NO. 7 OF 25 SHEETS STA. 146+00.00 TO STA. 147+00.00

F.A.P. RTE.	SECTION	COUNTY	TOTAL SHEETS	SHEET NO.
42	1-1BR-2	CLINTON	159	141
			CONTRACT NO.	76479
[ILLINOIS] FED. AID PROJECT				