


CODE NO.	ITEM	UNIT	TOTAL QUANTITY	CONSTRUCTION CODE		
				80% FEDERAL 20% STATE	80% FEDERAL 20% STATE	80% FEDERAL 20% STATE
				ROADWAY	ROADWAY	BRIDGE
				0005 RURAL	0004 RURAL	0014 SN 014-0033
20100110	TREE REMOVAL (6 TO 15 UNITS DIAMETER)	UNIT	48	-	-	48
20100210	TREE REMOVAL (OVER 15 UNITS DIAMETER)	UNIT	178	-	62	116
20100500	TREE REMOVAL, ACRES	ACRE	0.25	-	-	0.25
20101100	TREE TRUNK PROTECTION	EACH	1	-	1	-
20200100	EARTH EXCAVATION	CU YD	5,190	-	435	5,355
20201200	REMOVAL AND DISPOSAL OF UNSUITABLE MATERIAL	CU YD	75	-	-	75
* 25000210	SEEDING, CLASS 2A	ACRE	3.50	-	1.00	2.50
20400800	FURNISHED EXCAVATION	CU YD	75	-	-	75
* 25000400	NITROGEN FERTILIZER NUTRIENT	POUND	315	-	90	225
* 25000500	PHOSPHORUS FERTILIZER NUTRIENT	POUND	315	-	90	225
* 25000600	POTASSIUM FERTILIZER NUTRIENT	POUND	315	-	90	225
* 25100115	MULCH, METHOD 2	ACRE	2.25	-	1.00	1.25
25100630	EROSION CONTROL BLANKET	SQ YD	1688	-	301	1387
25100635	HEAVY DUTY EROSION CONTROL BLANKET	SQ YD	1749	-	-	1749
28000250	TEMPORARY EROSION CONTROL SEEDING	POUND	1400	-	400	1000
28000305	TEMPORARY DITCH CHECKS	FOOT	360	-	96	264

* SPECIALTY ITEM Δ REVISED 4/8/13

	USER NAME :	DESIGNED - JMH	REVISED -	STATE OF ILLINOIS DEPARTMENT OF TRANSPORTATION	SUMMARY OF QUANTITIES STRUCTURE NO. 014-0033			F.A.P. RTE.	SECTION	COUNTY	TOTAL SHEETS	SHEET NO.		
	PLOT SCALE :	DRAWN - PRC	REVISED -					42	1-1BR-2	CLINTON	159	3		
	PLOT DATE : 2/1/2013	CHECKED - RLM	REVISED -					SCALE: SHEET 1 OF 9 SHEETS STA. TO STA.					CONTRACT NO. 76479	
		DATE - 2/1/2013	REVISED -					[ILLINOIS] FED. AID PROJECT						

CODE NO.	ITEM	UNIT	TOTAL QUANTITY	CONSTRUCTION CODE					
				80% FEDERAL 20% STATE	80% FEDERAL 20% STATE	80% FEDERAL 20% STATE			
				ROADWAY	ROADWAY	BRIDGE			
				0005 RURAL	0004 RURAL	0014 SN 014-0033			
28000400	PERIMETER EROSION BARRIER	FOOT	4601	-	1170	3431			
28000500	INLET AND PIPE PROTECTION	EACH	5	-	2	3			
28100109	STONE RIPRAP, CLASS A5	SO YD	1225	-	-	1225			
28200200	FILTER FABRIC	SO YD	1225	-	-	1225			
30300112	AGGREGATE SUBGRADE IMPROVEMENT 12"	SQYD	4940	-	1,539	3,401			
35101600	AGGREGATE BASE COURSE, TYPE B 4"	SO YD	4063	-	1768	2295			
31102000	SUBBASE GRANULAR MATERIAL, TYPE C	CUYD	82	-	1	81			
35102000	AGGREGATE BASE COURSE, TYPE B 8"	SO YD	2566	-	49	2517			
40200800	AGGREGATE SURFACE COURSE, TYPE B	TON	44	44	-	-			
40201000	AGGREGATE FOR TEMPORARY ACCESS	TON	100	-	50	50			
40600200	BITUMINOUS MATERIALS (PRIME COAT)	TON	103	82	7	14			
40600300	AGGREGATE (PRIME COAT)	TON	12	-	4	8			
40600982	HOT-MIX ASPHALT SURFACE REMOVAL - BUTT JOINT	SO YD	1811	1811	-	-			
40603087	HOT-MIX ASPHALT BINDER COURSE, IL-19.0 FG, N70	TON	2106	-	730	1376			
40603315	HOT-MIX ASPHALT SURFACE COURSE, MIX "C", N70	TON	10952	10316	217	419			
40800050	INCIDENTAL HOT-MIX ASPHALT SURFACING	TON	306	266	6	34			

△ REVISED 4/8/13



USER NAME *	DESIGNED - JMH	REVISED -
	DRAWN - PRC	REVISED -
PLOT SCALE *	CHECKED - RLM	REVISED -
PLOT DATE * 2/1/2013	DATE - 2/1/2013	REVISED -

STATE OF ILLINOIS
DEPARTMENT OF TRANSPORTATION

SUMMARY OF QUANTITIES
STRUCTURE NO. 014-0033

F.A.P. RTE.	SECTION	COUNTY	TOTAL SHEETS	SHEET NO.
42	1-1BR-2	CLINTON	159	4
SCALE: SHEET 2 OF 9 SHEETS STA. TO STA.			CONTRACT NO. 76479	
ILLINOIS FED. AID PROJECT				

CODE NO.	ITEM	UNIT	TOTAL QUANTITY	CONSTRUCTION CODE					
				80% FEDERAL 20% STATE	80% FEDERAL 20% STATE	80% FEDERAL 20% STATE			
				ROADWAY	ROADWAY	BRIDGE			
				0005 RURAL	0004 RURAL	0014 SN 014-0033			
X0323433	MICROPILE PROOF LOAD TEST	EACH	4	-	-	4			
X0325110	BIAXIAL GEOGRID	SGYD	162	-	-	162			
X5210180	HIGH LOAD MULTI-ROTATIONAL BEARINGS, GUIDED EXPANSION, 550K	EACH	12	-	-	12			
X5860110	GRANULAR BACKFILL FOR STRUCTURES	CU YD	374	-	-	374			
X6660410	REMOVE RIGHT-OF-WAY MARKERS	EACH	2	-	1	1			
X6660445	RIGHT OF WAY AND PROPERTY CORNERS	EACH	7	-	-	7			
Z0004552	APPROACH SLAB REMOVAL	SO YD	195	-	-	195			
Z0013798	CONSTRUCTION LAYOUT	L SUM	1	-	-	1			
Z0016702	DETOUR SIGNING	L SUM	1	-	-	1			
Z0018002	DRAINAGE SCUPPERS, DS-11	EACH	24	-	-	24			
Z0046304	PIPE UNDERDRAINS FOR STRUCTURES 4"	FOOT	176	-	-	176			
Z0048665	RAILROAD PROTECTIVE LIABILITY INSURANCE	L SUM	1	-	1	-			
+ Z0076600	TRAINEES	HOUR	3,500	3,500					
Z0064505	SECTION CORNER MARKERS	EACH	7	3	2	2			
+ Z0076609	TRAINEES TRAINING PROGRAM GRADUATE	HOUR	3,500	3,500					
X0327568	TENSION MICROPILES	EACH	48	-	-	48			
X0327569	TENSION MICROPILE LOAD TEST	EACH	4	-	-	4			

+0042

△ REVISED 4/8/13



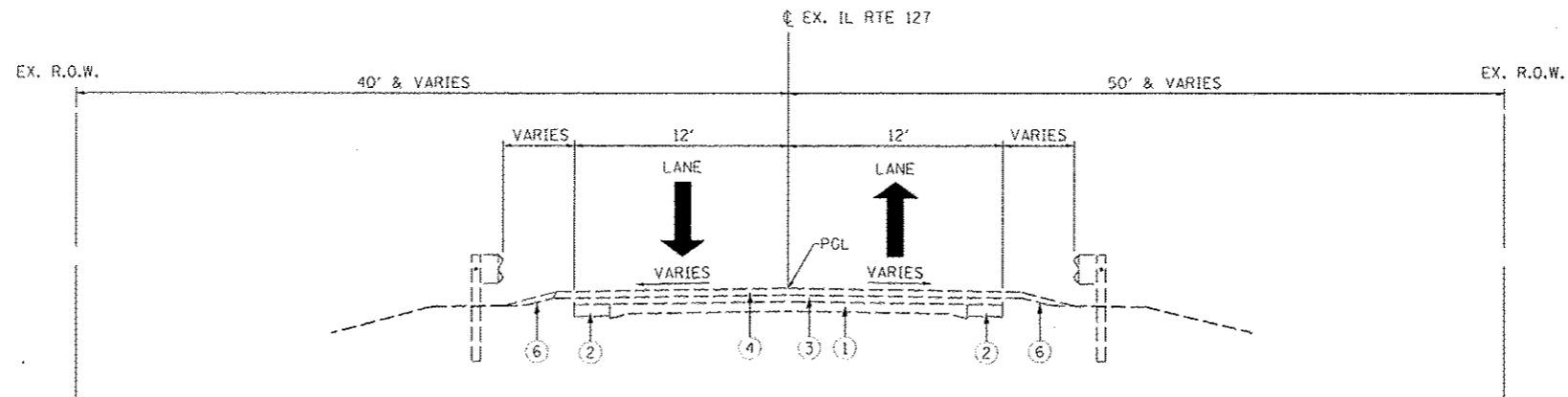
USER NAME *	DESIGNED - JWH	REVISED -
PLOT SCALE *	DRAWN - PRC	REVISED -
PLOT DATE * 2/1/2013	CHECKED - RLM	REVISED -
	DATE - 2/1/2013	REVISED -

STATE OF ILLINOIS
DEPARTMENT OF TRANSPORTATION

SUMMARY OF QUANTITIES
STRUCTURE NO. 014-0033

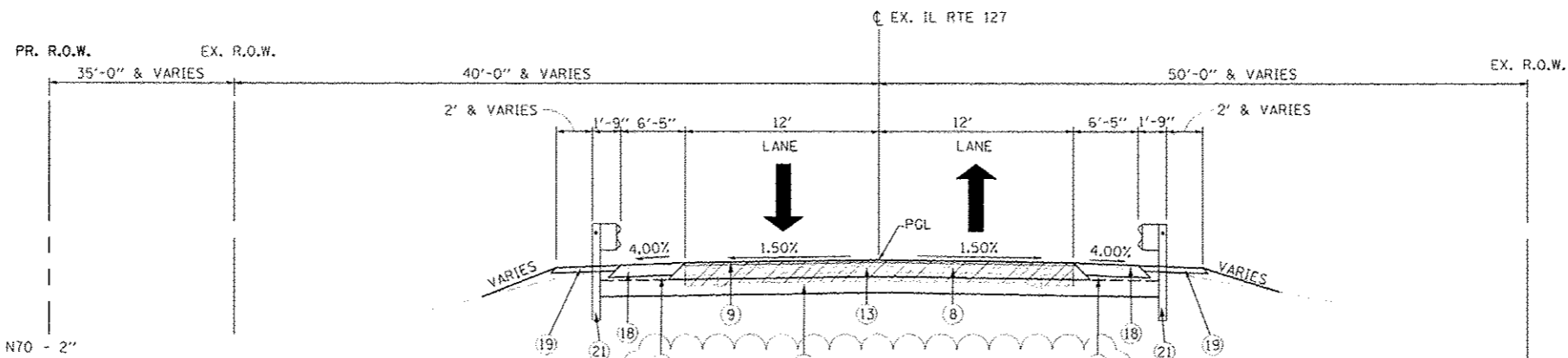
SCALE: SHEET 9 OF 9 SHEETS STA. TO STA.

F.A.P. RTE.	SECTION	COUNTY	TOTAL SHEETS	SHEET NO.
42	1-IBR-2	CLINTON	159	11
ILLINOIS FED. AID PROJECT			CONTRACT NO. 76479	



EXISTING TYPICAL TANGENT SECTION

STA. 127+00.00 TO STA. 129+07.17
 BRIDGE OMISSION
 STA. 129+07.17 TO STA. 140+94.54



PROPOSED TYPICAL TANGENT SECTION

STA. 127+00.00 TO STA. 129+26.58
 BRIDGE OMISSION
 STA. 129+26.58 TO STA. 140+83.27

LEGEND

- ① EXISTING PCC PAVEMENT
- ② EXISTING PCC BASE COURSE WIDENING
- ③ EXISTING HMA BINDER COURSE
- ④ EXISTING HMA SURFACE COURSE
- ⑤ EXISTING HMA SHOULDER 6"
- ⑥ EXISTING AGGREGATE WEDGE SHOULDER
- ⑦ EXISTING 1' SAFETY SHOULDER
- ⑧ PROPOSED PAVEMENT REMOVAL
- ⑨ PROPOSED HMA SURFACE COURSE, MIX "C", N70 - 2"
- ⑩ PROPOSED HMA SURFACE COURSE, MIX "C", N70 - 2 1/4"
- ⑪ PROPOSED HMA BINDER COURSE, IL-19.0 FG, N70 - 4"
- ⑫ PROPOSED HMA BINDER COURSE, IL-19.0 FG, N70 - 7"
- ⑬ PROPOSED HMA BINDER COURSE, IL-19.0 FG, N70 - 9"
- ⑭ PROPOSED HMA BINDER COURSE, IL-19.0 FG, N70 - 2"-8"
- ⑮ PROPOSED AGGREGATE BASE COURSE, TYPE B 4"
- ⑯ PROPOSED AGGREGATE BASE COURSE, TYPE B 8"
- ⑰ PROPOSED HMA SHOULDER 6" (SAFETY SHOULDER)
- ⑱ PROPOSED HMA SHOULDER 8"
- ⑲ PROPOSED AGGREGATE SHOULDER, TYPE B 4"
- ⑳ PROPOSED AGGREGATE WEDGE SHOULDER, TYPE B
- ㉑ PROPOSED STEEL PLATE BEAM GUARDRAIL, TYPE A, 6' POSTS
- ㉒ STRIP REFLECTIVE CRACK CONTROL TREATMENT
- ㉓ AGGREGATE SUBGRADE IMPROVEMENT 12"
- ㉔ SUBBASE GRANULAR MATERIAL, TYPE C
- ㉕ BIAXIAL GEOGRID **
- ㉖ REMOVAL AND DISPOSAL OF UNSUITABLE MATERIAL **
- ㉗ FURNISHED EXCAVATION **

E:\1224\Plan Sheets\082473-01-1-1-1.dwg

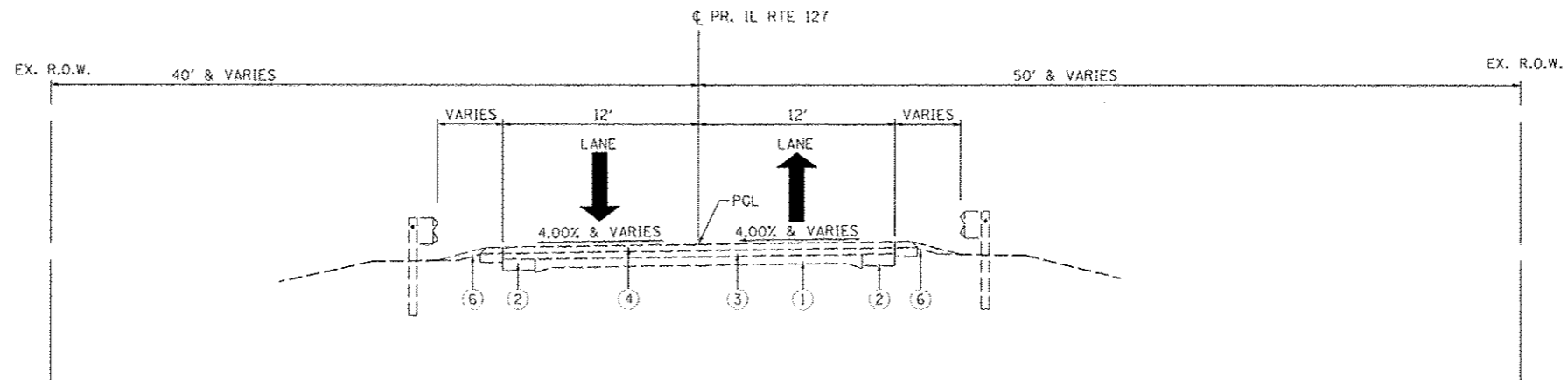
LE LIN ENGINEERING, LTD.
 Consulting Engineers
 Westmont, Illinois

USER NAME - Plotted by Scott	DESIGNED - BS	REVISED - 1 4-2-2013 SEW
PLOT SCALE - 10,000,000 1" = 100'	DRAWN - BS	REVISED -
PLOT DATE -	CHECKED - SEW	REVISED -
	DATE - 2-1-2013	REVISED -

**STATE OF ILLINOIS
 DEPARTMENT OF TRANSPORTATION**

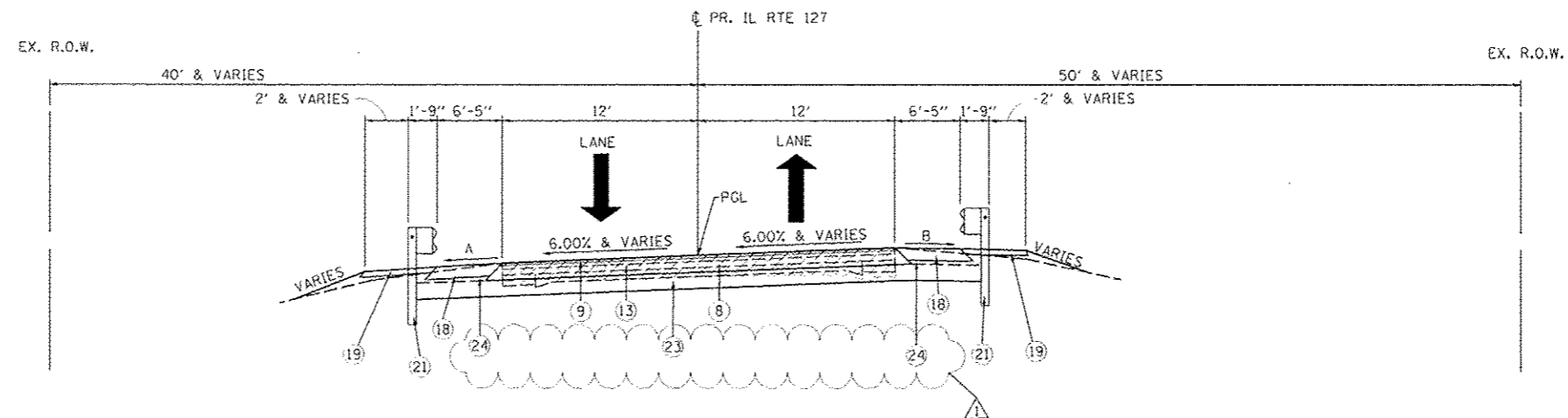
TYPICAL SECTIONS IL ROUTE 127	
SCALE: N.T.S.	SHEET NO. 1 OF 5 SHEETS
STA. N/A	TO STA. N/A

F.A.P. RTE.	SECTION	COUNTY	TOTAL SHEETS	SHEET NO.
42	1-1BR-2	CLINTON	159	14
CONTRACT NO. 76479				
ILLINOIS FED. AID PROJECT				



EXISTING TYPICAL SUPERELEVATED SECTION

BRIDGE OMISSION
 STA. 129+07.17 TO STA. 140+94.54
 STA. 140+94.54 TO STA. 142+29.30 SE TRANS.
 STA. 142+29.30 TO STA. 144+69.51 FULL SE 4%



PROPOSED TYPICAL SUPERELEVATED SECTION

BRIDGE OMISSION
 STA. 129+26.58 TO STA. 140+83.27
 STA. 140+97.85 TO STA. 143+11.85 SE TRANS.
 STA. 143+11.85 TO STA. 147+85.00 SE (6% & VAR.)

LEGEND

- ① EXISTING PCC PAVEMENT
- ② EXISTING PCC BASE COURSE WIDENING
- ③ EXISTING HMA BINDER COURSE
- ④ EXISTING HMA SURFACE COURSE
- ⑤ EXISTING HMA SHOULDER 6"
- ⑥ EXISTING AGGREGATE WEDGE SHOULDER
- ⑦ EXISTING 1' SAFETY SHOULDER
- ⑧ PROPOSED PAVEMENT REMOVAL
- ⑨ PROPOSED HMA SURFACE COURSE, MIX "C", N70 - 2"
- ⑩ PROPOSED HMA SURFACE COURSE, MIX "C", N70 - 2 1/4"
- ⑪ PROPOSED HMA BINDER COURSE, IL-19.0 FG, N70 - 4"
- ⑫ PROPOSED HMA BINDER COURSE, IL-19.0 FG, N70 - 7"
- ⑬ PROPOSED HMA BINDER COURSE, IL-19.0 FG, N70 - 9"
- ⑭ PROPOSED HMA BINDER COURSE, IL-19.0 FG, N70 - 2"-8"
- ⑮ PROPOSED AGGREGATE BASE COURSE, TYPE B 4"
- ⑯ PROPOSED AGGREGATE BASE COURSE, TYPE B 8"
- ⑰ PROPOSED HMA SHOULDER 6" (SAFETY SHOULDER)
- ⑱ PROPOSED HMA SHOULDER 8"
- ⑲ PROPOSED AGGREGATE SHOULDER, TYPE B 4"
- ⑳ PROPOSED AGGREGATE WEDGE SHOULDER, TYPE B
- ㉑ PROPOSED STEEL PLATE BEAM GUARDRAIL, TYPE A, 6' POSTS
- ㉒ STRIP REFLECTIVE CRACK CONTROL TREATMENT
- ㉓ AGGREGATE SUBGRADE IMPROVEMENT 12"
- ㉔ SUBBASE GRANULAR MATERIAL, TYPE C
- ㉕ BIAXIAL GEOGRID**
- ㉖ REMOVAL AND DISPOSAL OF UNSUITABLE MATERIAL**
- ㉗ FURNISHED EXCAVATION**

SHOULDER SLOPES IN SE

- (A) LOW SIDE - SLOPE SHOULDER AT 4% OR PAVEMENT SUPERELEVATION RATE, WHICHEVER IS GREATER.
- (B) HIGH SIDE - SLOPE SHOULDER AT 4% WHEN PAVEMENT SLOPE IS LESS THAN 4%. WHEN SE EXCEEDS 4%, SLOPE SHOULDER NOT TO EXCEED ALGEBRAIC DIFFERENCE OF 8.0% BETWEEN PAVEMENT AND SHOULDER.

E:\1102\1102\1102.dwg, Sheet: 15 of 15, 4/2/2013 10:41:11 AM

LIN ENGINEERING, LTD.
 Consulting Engineers
 Westmont, Illinois

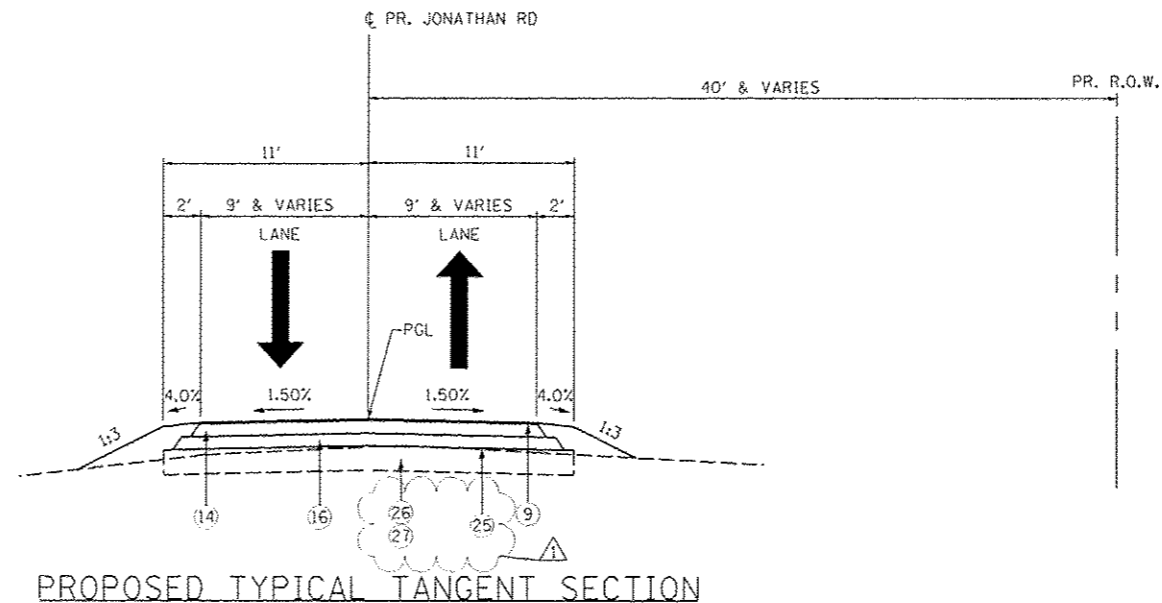
USER NAME : Plotted by Scott	DESIGNED - BS	REVISED - 4-2-2013 SEW
PLOT SCALE : 1/8" = 1'-0"	DRAWN - BS	REVISED -
PLOT DATE :	CHECKED - SEW	REVISED -
	DATE - 2-1-2013	REVISED -

**STATE OF ILLINOIS
 DEPARTMENT OF TRANSPORTATION**

**TYPICAL SECTIONS
 IL ROUTE 127**

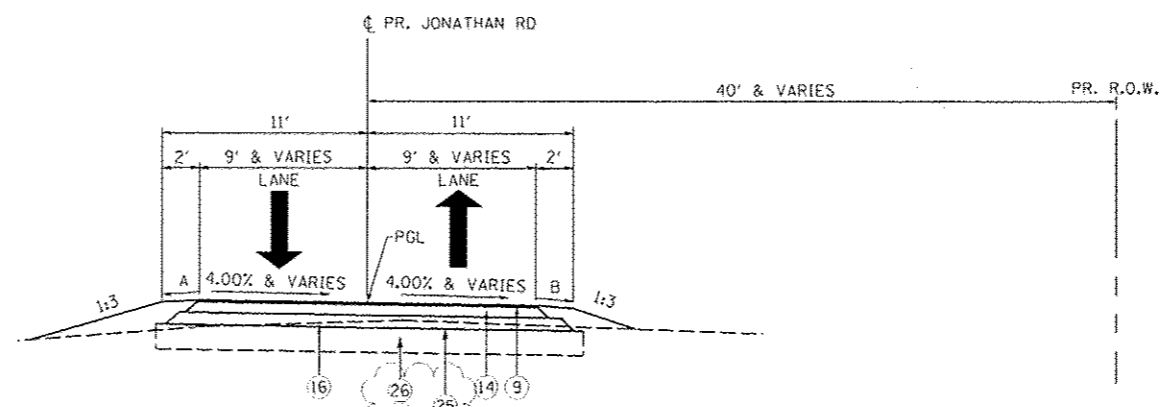
SCALE: N.T.S. SHEET NO. 2 OF 5 SHEETS STA. N/A TO STA. N/A

F.A.P. RTE.	SECTION	COUNTY	TOTAL SHEETS	SHEET NO.
42	1-1BR-2	CLINTON	159	15
			CONTRACT NO. 76479	
ILLINOIS FED. AID PROJECT				



PROPOSED TYPICAL TANGENT SECTION

STA 3+38.00 TO STA 3+70.29
 STA. 6+96.47 TO STA 8+09.19
 STA 10+53.94 TO STA 10+78.33



PROPOSED TYPICAL SUPERELEVATED SECTION

STA 3+70.29 TO STA 4+46.29 SE TRANS
 STA. 4+46.29 TO STA 6+20.47 4% SE (CURVE RT)
 STA 6+20.47 TO STA 6+96.47 SE TRANS

STA 8+09.19 TO STA 8+76.19 SE TRANS
 STA 8+76.19 TO STA 9+86.94 4% SE (CURVE LT)
 STA 9+86.94 TO STA 10+53.94 SE TRANS

LEGEND

- ① EXISTING PCC PAVEMENT
- ② EXISTING PCC BASE COURSE WIDENING
- ③ EXISTING HMA BINDER COURSE
- ④ EXISTING HMA SURFACE COURSE
- ⑤ EXISTING HMA SHOULDER 6"
- ⑥ EXISTING AGGREGATE WEDGE SHOULDER
- ⑦ EXISTING 1' SAFETY SHOULDER
- ⑧ PROPOSED PAVEMENT REMOVAL
- ⑨ PROPOSED HMA SURFACE COURSE, MIX "C", N70 - 2"
- ⑩ PROPOSED HMA SURFACE COURSE, MIX "C", N70 - 2 1/4"
- ⑪ PROPOSED HMA BINDER COURSE, IL-19.0 FG, N70 - 4"
- ⑫ PROPOSED HMA BINDER COURSE, IL-19.0 FG, N70 - 7"
- ⑬ PROPOSED HMA BINDER COURSE, IL-19.0 FG, N70 - 9"
- ⑭ PROPOSED HMA BINDER COURSE, IL-19.0 FG, N70 - 2"-8"
- ⑮ PROPOSED AGGREGATE BASE COURSE, TYPE B 4"
- ⑯ PROPOSED AGGREGATE BASE COURSE, TYPE B 8"
- ⑰ PROPOSED HMA SHOULDER 6" (SAFETY SHOULDER)
- ⑱ PROPOSED HMA SHOULDER 8"
- ⑲ PROPOSED AGGREGATE SHOULDER, TYPE B 4"
- ⑳ PROPOSED AGGREGATE WEDGE SHOULDER, TYPE B
- ㉑ PROPOSED STEEL PLATE BEAM GUARDRAIL, TYPE A, 6' POSTS
- ㉒ STRIP REFLECTIVE CRACK CONTROL TREATMENT
- ㉓ AGGREGATE SUBGRADE IMPROVEMENT 12"
- ㉔ SUBBASE GRANULAR MATERIAL, TYPE C
- ㉕ BIAXIAL GEOGRID **
- ㉖ REMOVAL AND DISPOSAL OF UNSUITABLE MATERIAL **
- ㉗ FURNISHED EXCAVATION **

*2" BINDER STA. 3+38.00 TO STA. 10+48.14
 8" BINDER STA. 10+48.14 TO STA. 10+78.14

**16" UNDERCUT W/BIAIXIAL GEOGRID STA. 3+85.00 TO STA. 5+00.00

NOTE:
 STA 3+38.00 TO STA. 6+38.62
 PAVEMENT WIDTH VARIES
 FROM EX WIDTH 10.47' TO PR WIDTH 18.0'

SHOULDER SLOPES IN SE: 4%

- (A) HIGH SIDE - SLOPE SHOULDER AT 4% WHEN PAVEMENT SLOPE IS LESS THAN 4%. WHEN SE EXCEEDS 4%, SLOPE SHOULDER NOT TO EXCEED ALGEBRAIC DIFFERENCE OF 8.0% BETWEEN PAVEMENT AND SHOULDER.
- (B) LOW SIDE - SLOPE SHOULDER AT 4%.

E:\124\plan_Sheets\028479-AN1-1\plan.dgn



USER NAME - Plotted by Soott	DESIGNED - BS	REVISED - 1 4-2-2013 SEW
PLOT SCALE = 1/8" = 1'-0"	DRAWN - BS	REVISED -
PLOT DATE -	CHECKED - SEW	REVISED -
	DATE - 2-1-2013	REVISED -

STATE OF ILLINOIS
 DEPARTMENT OF TRANSPORTATION

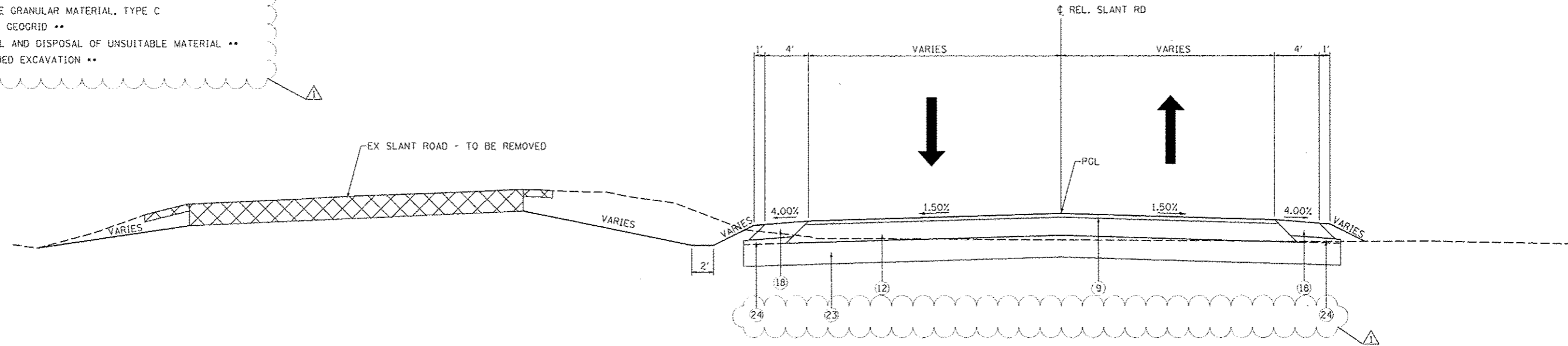
TYPICAL SECTIONS
 JONATHAN ROAD

SCALE: N.T.S. SHEET NO. 3 OF 5 SHEETS STA. N/A TO STA. N/A

F.A.P. RTE.	SECTION	COUNTY	TOTAL SHEETS	SHEET NO.
42	I-18R-2	CLINTON	159	16
CONTRACT NO. 76479				
ILLINOIS FED. AID PROJECT				

LEGEND

- ① EXISTING PCC PAVEMENT
- ② EXISTING PCC BASE COURSE WIDENING
- ③ EXISTING HMA BINDER COURSE
- ④ EXISTING HMA SURFACE COURSE
- ⑤ EXISTING HMA SHOULDER 6"
- ⑥ EXISTING AGGREGATE WEDGE SHOULDER
- ⑦ EXISTING 1' SAFETY SHOULDER
- ⑧ PROPOSED PAVEMENT REMOVAL
- ⑨ PROPOSED HMA SURFACE COURSE, MIX "C", N70 - 2"
- ⑩ PROPOSED HMA SURFACE COURSE, MIX "C", N70 - 2 1/4"
- ⑪ PROPOSED HMA BINDER COURSE, IL-19.0 FG, N70 - 4"
- ⑫ PROPOSED HMA BINDER COURSE, IL-19.0 FG, N70 - 7"
- ⑬ PROPOSED HMA BINDER COURSE, IL-19.0 FG, N70 - 9"
- ⑭ PROPOSED HMA BINDER COURSE, IL-19.0 FG, N70 - 2"-8"*
- ⑮ PROPOSED AGGREGATE BASE COURSE, TYPE B 4"
- ⑯ PROPOSED AGGREGATE BASE COURSE, TYPE B 8"
- ⑰ PROPOSED HMA SHOULDER 6" (SAFETY SHOULDER)
- ⑱ PROPOSED HMA SHOULDER 8"
- ⑲ PROPOSED AGGREGATE SHOULDER, TYPE B 4"
- ⑳ PROPOSED AGGREGATE WEDGE SHOULDER, TYPE B
- ㉑ PROPOSED STEEL PLATE BEAM GUARDRAIL, TYPE A, 6' POSTS
- ㉒ STRIP REFLECTIVE CRACK CONTROL TREATMENT
- ㉓ AGGREGATE SUBGRADE IMPROVEMENT 12"
- ㉔ SUBBASE GRANULAR MATERIAL, TYPE C
- ㉕ BIAXIAL GEOGRID **
- ㉖ REMOVAL AND DISPOSAL OF UNSUITABLE MATERIAL **
- ㉗ FURNISHED EXCAVATION **



PROPOSED TYPICAL SECTION

STA. 0+12.81 TO STA. 2+68.38

E:\2013\Plan Sheets\091617P-ent-typical.dwg

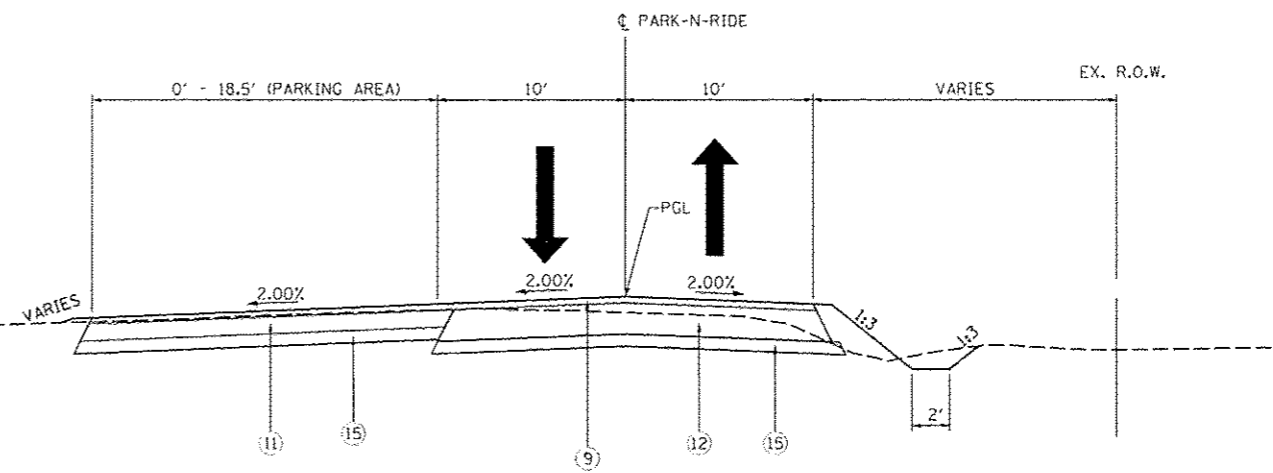
LIN ENGINEERING LTD.
Consulting Engineers
Westmont, Illinois

USER NAME : Plotted by Scott	DESIGNED - BS	REVISED - 4-2-2013 SEW
DRAWN - BS	CHECKED - SEW	DATE - 2-1-2013
PLOT SCALE = 10,000,000 / 1" =		
PLOT DATE :		

STATE OF ILLINOIS
DEPARTMENT OF TRANSPORTATION

TYPICAL SECTIONS RELOCATED SLANT ROAD	
SCALE: N.T.S.	SHEET NO. 4 OF 5 SHEETS
STA. N/A	TO STA. N/A

F.A.P. RTE. 42	SECTION 1-1BR-2	COUNTY CLINTON	TOTAL SHEETS 159	SHEET NO. 17
ILLINOIS FED. AID PROJECT CONTRACT NO. 76479				



PROPOSED TYPICAL SECTION

STA. 10+13.25 TO STA. 12+24.17

LEGEND

- ① EXISTING PCC PAVEMENT
- ② EXISTING PCC BASE COURSE WIDENING
- ③ EXISTING HMA BINDER COURSE
- ④ EXISTING HMA SURFACE COURSE
- ⑤ EXISTING HMA SHOULDER 6"
- ⑥ EXISTING AGGREGATE WEDGE SHOULDER
- ⑦ EXISTING 1' SAFETY SHOULDER
- ⑧ PROPOSED PAVEMENT REMOVAL
- ⑨ PROPOSED HMA SURFACE COURSE, MIX "C", N70 - 2"
- ⑩ PROPOSED HMA SURFACE COURSE, MIX "C", N70 - 2 1/4"
- ⑪ PROPOSED HMA BINDER COURSE, IL-19.0 FG, N70 - 4"
- ⑫ PROPOSED HMA BINDER COURSE, IL-19.0 FG, N70 - 7"
- ⑬ PROPOSED HMA BINDER COURSE, IL-19.0 FG, N70 - 9"
- ⑭ PROPOSED HMA BINDER COURSE, IL-19.0 FG, N70 - 2"-8"
- ⑮ PROPOSED AGGREGATE BASE COURSE, TYPE B 4"
- ⑯ PROPOSED AGGREGATE BASE COURSE, TYPE B 8"
- ⑰ PROPOSED HMA SHOULDER 6" (SAFETY SHOULDER)
- ⑱ PROPOSED HMA SHOULDER 8"
- ⑲ PROPOSED AGGREGATE SHOULDER, TYPE B 4"
- ⑳ PROPOSED AGGREGATE WEDGE SHOULDER, TYPE B
- ㉑ PROPOSED STEEL PLATE BEAM GUARDRAIL, TYPE A, 6' POSTS
- ㉒ STRIP REFLECTIVE CRACK CONTROL TREATMENT
- ㉓ AGGREGATE SUBGRADE IMPROVEMENT 12"
- ㉔ SUBBASE GRANULAR MATERIAL, TYPE C
- ㉕ BIAXIAL GEGRID **
- ㉖ REMOVAL AND DISPOSAL OF UNSUITABLE MATERIAL **
- ㉗ FURNISHED EXCAVATION **

E:\1324\Plan_Sheets\0876479-0111-1-10-13.dgn

Lin Engineering, Ltd.
Consulting Engineers
Westmont, Illinois

USER NAME = Plotted by Scott	DESIGNED - BS	REVISED - 4-2-2013 SEW
PLOT SCALE = 10.000000' / in.	DRAWN - BS	REVISED -
PLOT DATE =	CHECKED - SEW	REVISED -
	DATE - 2-1-2013	REVISED -

**STATE OF ILLINOIS
DEPARTMENT OF TRANSPORTATION**

TYPICAL SECTIONS PARK-N-RIDE	
SCALE: N.T.S.	SHEET NO. 5 OF 5 SHEETS
STA. N/A	TO STA. N/A

F.A.P. RTE.	SECTION	COUNTY	TOTAL SHEETS	SHEET NO.
42	1-1BR-2	CLINTON	159	18
CONTRACT NO. 76479				
ILLINOIS FED. AID PROJECT				

INDEX OF SHEETS

1 General Plan and Elevation - 1
 2 General Plan and Elevation - 2
 3 General Structure Data
 4 Footing Layout and Sequence of Construction
 5 Top of Slab Elevations - 1
 6 Top of Slab Elevations - 2
 7 Top of Slab Elevations - 3
 8 Top of Slab Elevations - 4
 9 Top of Slab Elevations - 5
 10 Top of Slab Elevations - 6
 11 Top of Slab Elevations - 7
 12 Top of North Approach Slab Elevations
 13 Top of South Approach Slab Elevations
 14 Superstructure - Unit 1
 15 Superstructure - Unit 2
 16 Superstructure Details - 1
 17 Superstructure Details - 2
 18 Concrete Parapet Slipforming Option
 19 Drainage Scupper, DS-11
 20 Bridge Approach Slab Details at N. Abut. - 1
 21 Bridge Approach Slab Details at N. Abut. - 2
 22 Bridge Approach Slab Details at S. Abut. - 1
 23 Bridge Approach Slab Details at S. Abut. - 2
 24 Finger Plate Expansion Joint - 1
 25 Finger Plate Expansion Joint - 2
 26 Preformed Joint Strip Seal
 27 Steel Framing Plan - Unit 1 (1 of 2)
 28 Steel Framing Plan - Unit 1 (2 of 2)
 29 Steel Framing Plan - Unit 2
 30 Steel Details - Unit 1
 31 Steel Details - Unit 2
 32 Miscellaneous Steel Details
 33 Camber Diagrams
 34 Design Data Tables and Notes
 35 Bearing Details
 36 HLMR Guided Expansion Bearing Details
 37 North Abutment
 38 North Abutment Details
 39 South Abutment
 40 South Abutment Details
 41 Pier 1
 42 Pier 2
 43 Pier 3
 44 Pier 4
 45 Pier 5
 46 Steel H-Pile Details
 47 Micropile Details - 1
 48 Micropile Details - 2
 49 Micropile Details - 3
 50 Bar Splicer Assembly and Mechanical Splicer Details
 51 Soil Boring Log B-1
 52 Soil Boring Log B-2
 53 Soil Boring Log B-3
 54 Rock Core Log B-3X
 55 Soil Boring Log B-4
 56 Soil Boring Log B-5
 57 Rock Core Log B-5X
 58 Soil Boring Log B-6
 59 Soil Boring and Rock Core Log B-7
 60 Rock Core Log B-7X
 61 Soil Boring and Rock Core Log B-8, B-9

GENERAL NOTES

Fasteners shall be ASTM A325 Type 1, mechanically galvanized bolts. Bolts $\frac{7}{8}$ in. ϕ , holes $\frac{15}{16}$ in. ϕ , unless otherwise noted.
 Calculated weight of Structural Steel =

3,082,866 lbs. of Grade 50
 131,422 lbs. of Grade 36

No field welding is permitted except as specified in the contract documents. Reinforcement bars designated (E) shall be epoxy coated.

If the Contractor elects to use cantilever forming brackets on the exterior beams or girders, the brackets shall be placed at the same locations as required for the hardwood blocks in Article 503.06(b) of the Standard Specifications. If additional cantilever forming brackets are required, hardwood blocking shall be wedged between the exterior and first interior beam at each of these additional bracket locations.

Plan dimensions and details relative to the existing structure are from the existing plans and are subject to nominal construction variations. The Contractor shall field verify existing dimensions and details affecting new construction.

Bearing seat surfaces shall be constructed or adjusted to the designated elevations within a tolerance of $\frac{1}{8}$ inch (0.01 ft.). Adjustment shall be made either by grinding the surface or by shimming the bearings.

Concrete Sealer shall be applied to the designated areas of the abutments and piers.

The existing structural steel coating contains lead. The Contractor shall take appropriate precautions to deal with the presence of lead on this project.

All beams, bearings and other structural steel within 5 ft (measured along the beam) of either side of deck joints shall be metallized in the shop and field painted with the top coats specified for the remainder of the structural steel. See Special Provision for Metallizing Structural Steel.

The Inorganic Zinc Rich Primer / Acrylic / Acrylic Paint System shall be used for shop and field painting of new structural steel except where otherwise noted. The color of the final finish coat for all interior steel surfaces shall be gray, Munsell No. 5B 7/1. The color of the final finish coat for the exterior and bottom flange of the fascia beams shall be gray, Munsell No. 5B 7/1.

Layout of the slope protection system may be varied to suit ground conditions in the field as directed by the Engineer.

The Contractor shall obtain a construction permit from the Illinois Department of Natural Resources (IDNR), Office of Water Resources for any temporary construction activity placed in the water except cofferdams. This shall include the placement of material for run-arounds, causeways, etc. Any permit application by the Contractor shall refer to the IDNR 3704 Floodway Construction permit number allowing permanent construction. For this project, the anticipated construction activities within the water are limited to removal of existing piers and riprap placement.

TOTAL BILL OF MATERIAL

ITEM	UNIT	SUPER	SUB	TOTAL
Stone Riprap, Class A5	Sq. Yd.	-	1,026	1,026
Filter Fabric	Sq. Yd.	-	1,026	1,026
Removal of Existing Structures	Each	-	-	1
Structure Excavation	Cu. Yd.	-	1,725	1,725
Concrete Structures	Cu. Yd.	-	935.2	935.2
Concrete Superstructure	Cu. Yd.	1576.8	-	1576.8
Bridge Deck Grooving	Sq. Yd.	4,855	-	4,855
Concrete Encasement	Cu. Yd.	-	13.1	13.1
Protective Coat	Sq. Yd.	5,853	-	5,853
Furnishing and Erecting Structural Steel	L. Sum	1	-	1
Stud Shear Connectors	Each	11,718	-	11,718
Reinforcement Bars	Pound	-	1,700	1,700
Reinforcement Bars, Epoxy Coated	Pound	386,150	129,140	515,290
Bar Splicers	Each	-	168	168
Mechanical Splicers	Each	-	148	148
Furnishing Steel Piles HP14x89	Foot	-	1,248	1,248
Driving Piles	Foot	-	1,248	1,248
Name Plates	Each	1	-	1
Drilled Shaft in Soil	Cu. Yd.	-	141.6	141.6
Drilled Shaft in Rock	Cu. Yd.	-	55.8	55.8
Preformed Joint Strip Seal	Foot	38	-	38
Finger Plate Expansion Joint, 3"	Foot	36	-	36
Finger Plate Expansion Joint, 4"	Foot	36	-	36
Fabric Reinforced Elastomeric Trough	Foot	84	-	84
Elastomeric Bearing Assembly, Type II	Each	24	-	24
Anchor Bolts, 1"	Each	72	-	72
Anchor Bolts, 1 1/4"	Each	36	-	36
Anchor Bolts, 1 1/2"	Each	12	-	12
Concrete Sealer	Sq. Ft.	-	2,128	2,128
Geocomposite Wall Drain	Sq. Yd.	-	179	179
Drainage Scuppers, DS-11	Each	24	-	24
Pipe Underdrains for Structures 4"	Foot	-	176	176
Micro-piles	Each	-	94	94
Micropile Proof Load Test	Each	-	4	4
High Load Multi-Rotational Bearings, Guided Expansion, 550k	Each	12	-	12
Granular Backfill for Structures	Cu. Yd.	-	374	374
Tension Micropiles	Each	-	48	48
Tension Micropile Load Test	Each	-	4	4



USER NAME :	DESIGNED - RLM	REVISED Δ 4/2/2013 JMH
PLOT SCALE :	CHECKED - JTH	REVISED
PLBT DATE : 2/1/2013	DRAWN - PRC	REVISED
	CHECKED - RLM	REVISED

STATE OF ILLINOIS
 DEPARTMENT OF TRANSPORTATION

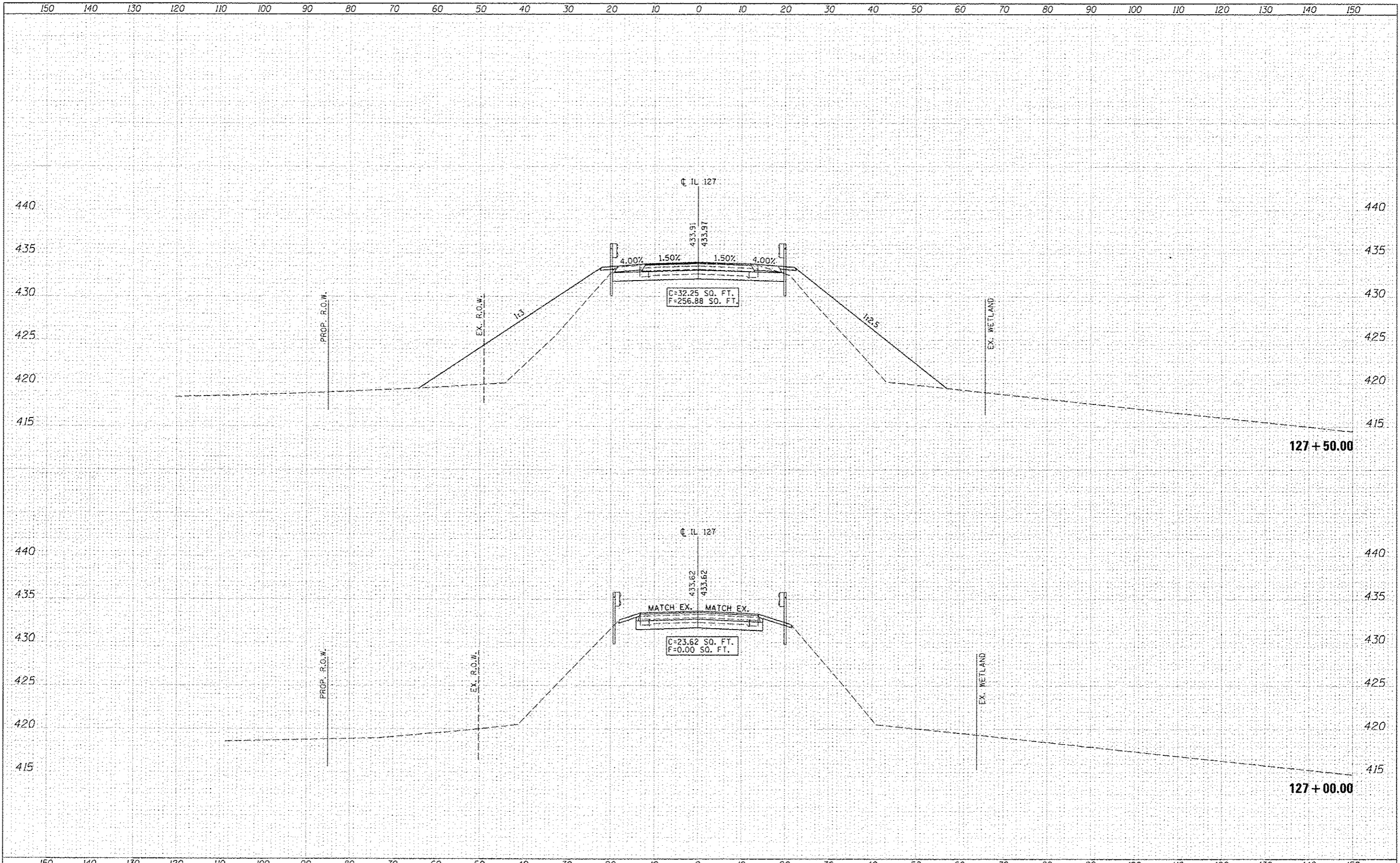
GENERAL STRUCTURE DATA
 STRUCTURE NO. 014-0033

SHEET NO. 3 OF 61 SHEETS

F.A.P. RTE.	SECTION	COUNTY	TOTAL SHEETS	SHEET NO.
42	1-1BR-2	CLINTON	159	72
			CONTRACT NO. 76479	
ILLINOIS FED. AID PROJECT				

DATE	
BY	
FINI	
SURVEY	
NOTED	
NOTE BOOK	
AREAS	
AREAS CHECKED	

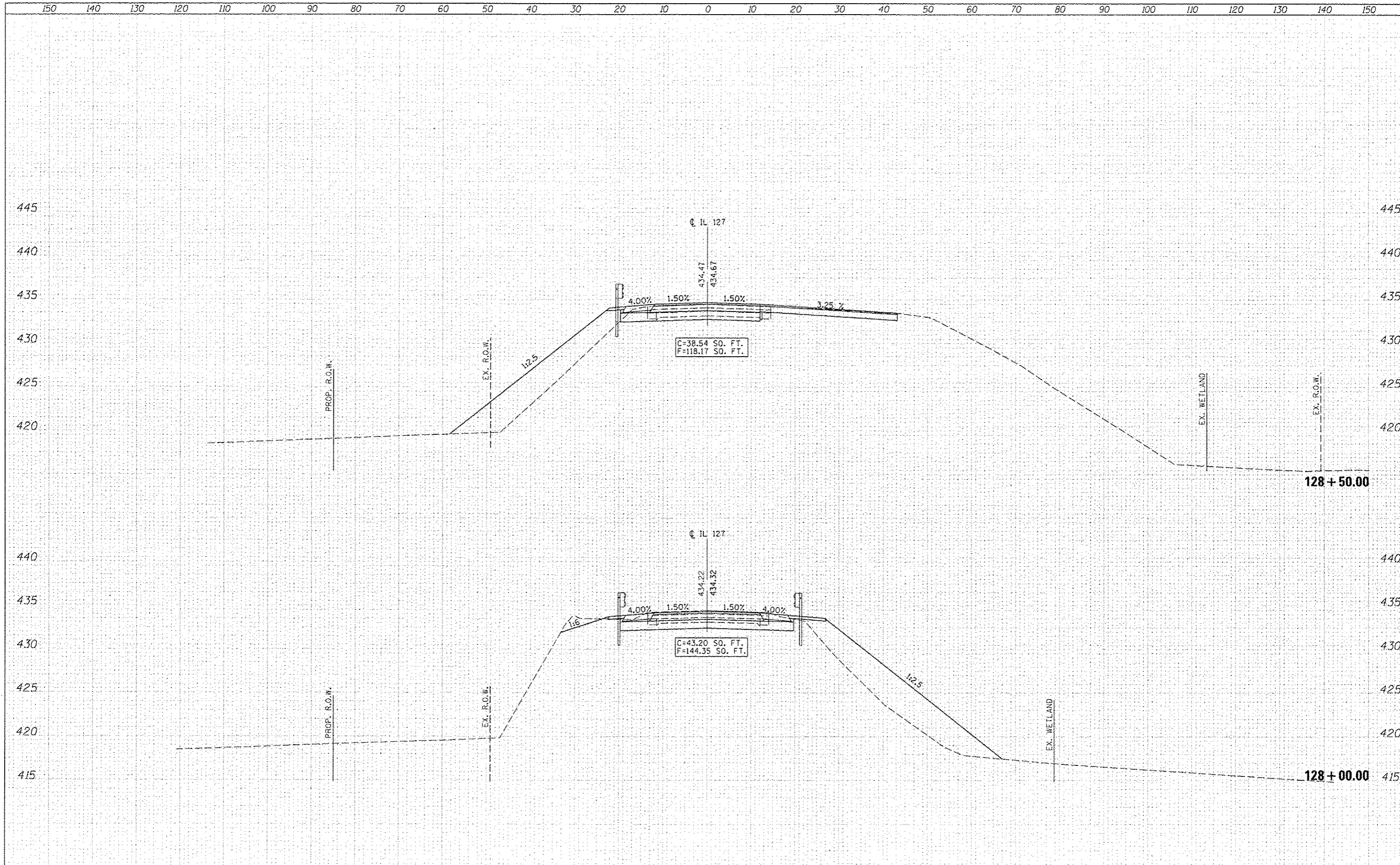
DATE	
BY	
ORIGINAL	
SURVEY	
NOTED	
NOTE BOOK	
AREAS	
AREAS CHECKED	



LIN ENGINEERING, LTD. Consulting Engineers Westmont, Illinois	USER NAME = Plotted by Seeth DESIGNED - RK DRAWN - RK CHECKED - SEW DATE - 2-1-2013	REVISED SHEET 4-2-2013 SEW REVISED - REVISED - REVISED -	STATE OF ILLINOIS DEPARTMENT OF TRANSPORTATION	CROSS SECTIONS IL 127 OVER KASKASKIA RIVER	F.A.P. RTE. 42 SECTION 1-1BR-2 COUNTY CLINTON TOTAL SHEETS 159 SHEET NO. 135 CONTRACT NO. 76479
	PLOT SCALE = 20.0000' / 1"	DATE - 2-1-2013	REVISED -	SCALE: 1"=10'H, 5'V SHEET NO. 1 OF 25 SHEETS STA. 127+00.00 TO STA. 127+50.00	ILLINOIS FED. AID PROJECT

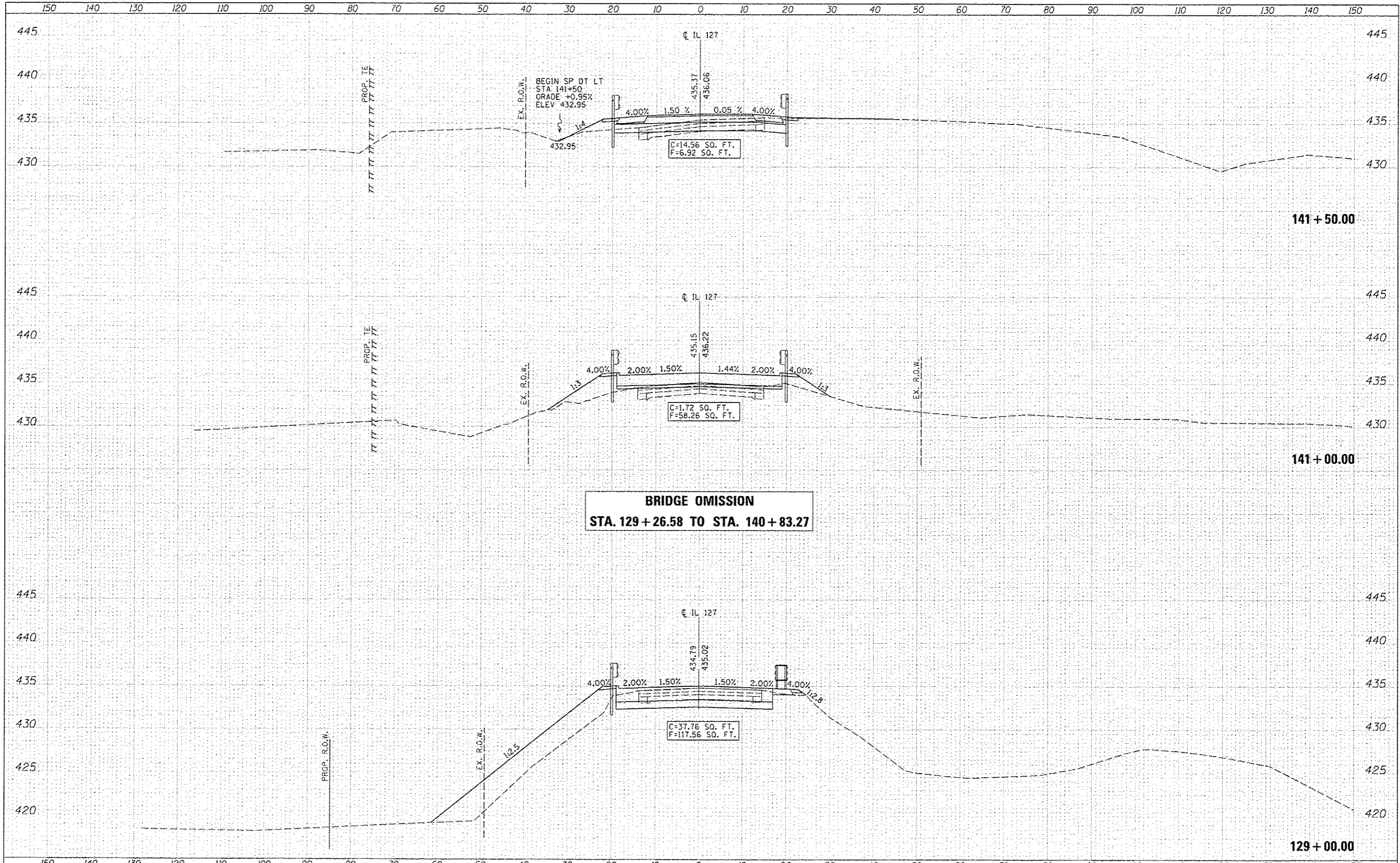
DATE	
BY	
REVISIONS	
NO.	
DATE	
BY	
REVISIONS	
NO.	
DATE	
BY	
REVISIONS	
NO.	

DATE	
BY	
REVISIONS	
NO.	
DATE	
BY	
REVISIONS	
NO.	
DATE	
BY	
REVISIONS	
NO.	



DATE	
BY	
DESIGNED	
DRAWN	
CHECKED	
DATE	
REVISIONS	
NO.	
AREA CHECKED	
DATE	
BY	
DESIGNED	
DRAWN	
CHECKED	
DATE	
REVISIONS	
NO.	
AREA CHECKED	
DATE	
BY	
DESIGNED	
DRAWN	
CHECKED	
DATE	
REVISIONS	
NO.	
AREA CHECKED	

DATE	
BY	
DESIGNED	
DRAWN	
CHECKED	
DATE	
REVISIONS	
NO.	
AREA CHECKED	
DATE	
BY	
DESIGNED	
DRAWN	
CHECKED	
DATE	
REVISIONS	
NO.	
AREA CHECKED	



BRIDGE OMISSION
STA. 129+26.58 TO STA. 140+83.27

LI ENGINEERING, LTD.
 Consulting Engineers
 Westmont Illinois

USER NAME	Plotted by Scott	DESIGNED	RK	REVISED	SHEET	4-2-2013 SEW
PLLOT SCALE	28.0000' / in.	DRAWN	HK	REVISED		
PLLOT DATE		CHECKED	SEW	REVISED		
		DATE	2-1-2013	REVISED		

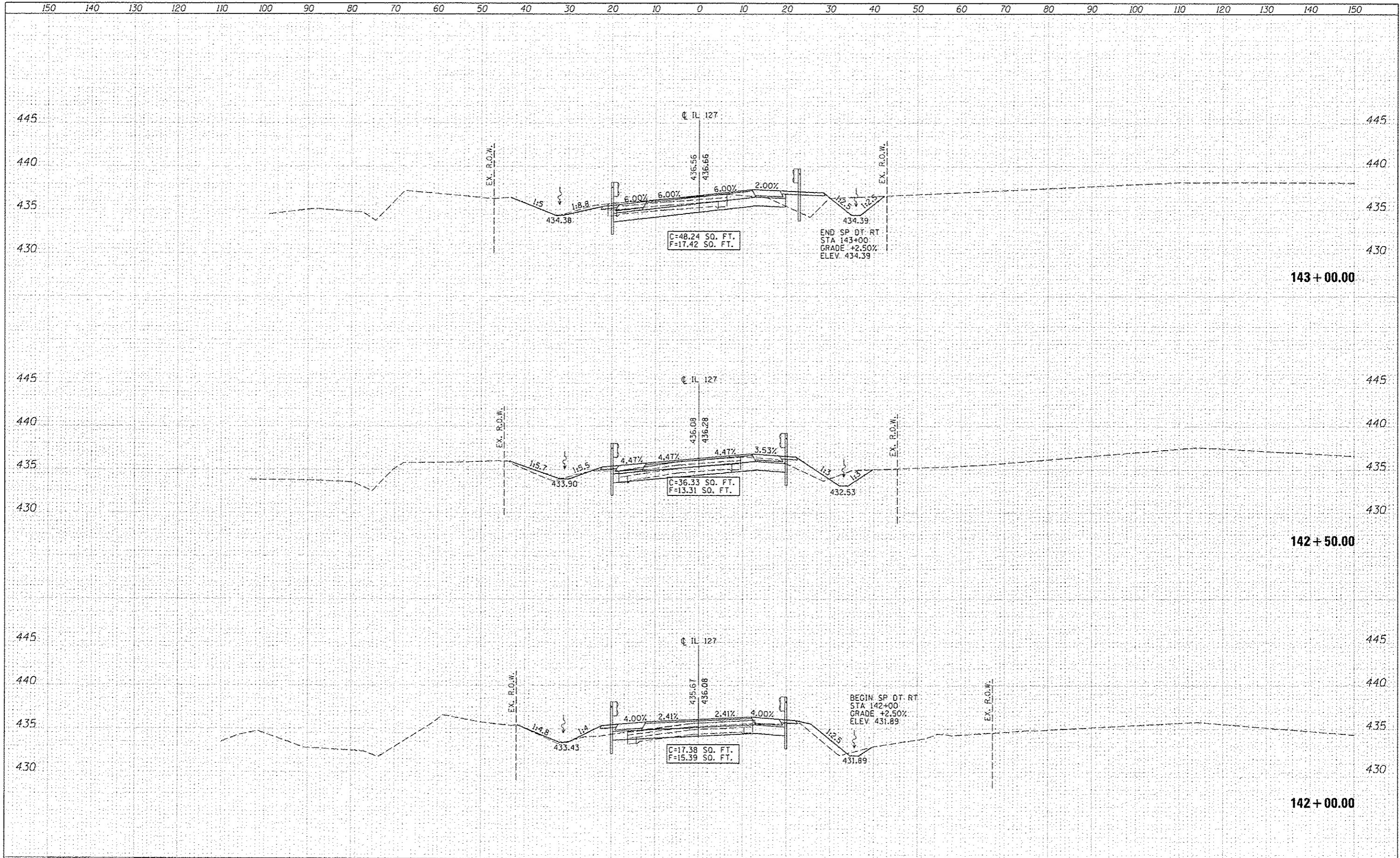
STATE OF ILLINOIS
DEPARTMENT OF TRANSPORTATION

CROSS SECTIONS
IL 127 OVER KASKASKIA RIVER
 SCALE: 1"=10'H, 5'V SHEET NO. 3 OF 25 SHEETS STA. 129+00.00 TO STA. 141+50.00

F.A.P. RTE.	SECTION	COUNTY	TOTAL SHEETS	SHEET NO.
42	1-1BR-2	CLINTON	159	137
CONTRACT NO. 76479				
ILLINOIS FED. AID PROJECT				

DATE	
BY	
DESIGNED	
DRAWN	
CHECKED	
DATE	
REVISIONS	
NO.	

DATE	
BY	
DESIGNED	
DRAWN	
CHECKED	
DATE	
REVISIONS	
NO.	



LIN ENGINEERING, LTD.
 Consulting Engineers
 Westwood Illinois

USER NAME	Plotted by Scott	DESIGNED	RK	REVISED	SHEET 4-2-2013 SEW
PLOT SCALE	20,0000 1/ in.	DRAWN	RK	REVISED	-
PLOT DATE	-	CHECKED	SEW	REVISED	-
		DATE	2-1-2013	REVISED	-

STATE OF ILLINOIS
DEPARTMENT OF TRANSPORTATION

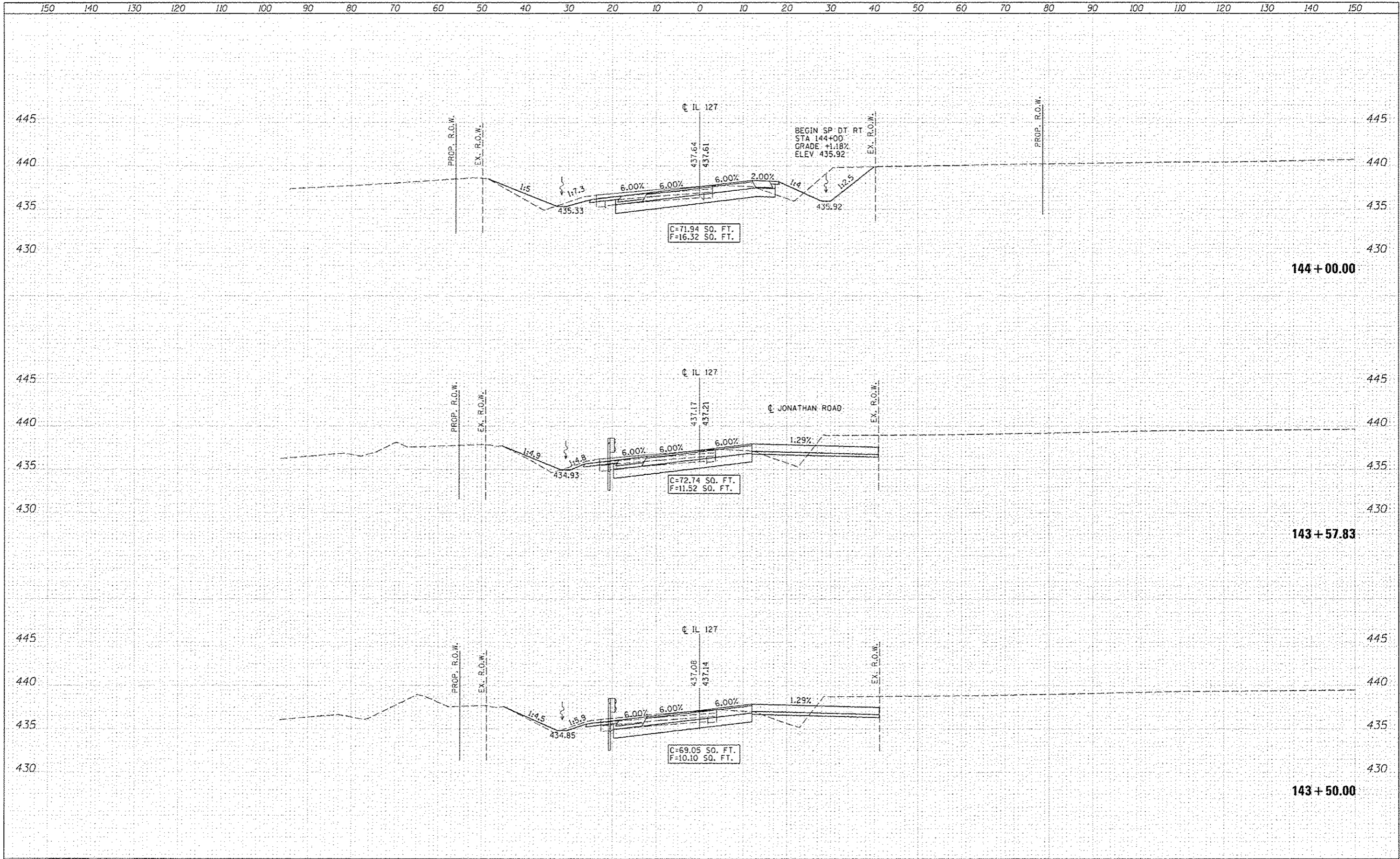
CROSS SECTIONS
IL 127 OVER KASKASKIA RIVER
 SCALE: 1"=10'H, 5'V SHEET NO. 4 OF 25 SHEETS STA. 142+00.00 TO STA. 143+00.00

F.A.P. RTE.	SECTION	COUNTY	TOTAL SHEETS	SHEET NO.
42	1-1BR-2	CLINTON	159	138
			CONTRACT NO. 76479	

ILLINOIS FED. AID PROJECT

DATE	
BY	
STARTED	
SURVEY	
PLOTTED	
NOTE BOOK	
AREA	
NO.	

DATE	
BY	
STARTED	
SURVEY	
PLOTTED	
NOTE BOOK	
AREA	
NO.	



E LIN ENGINEERING, LTD.
Consulting Engineers
Waverly, Illinois

USER NAME	Plotted by Scott	DESIGNED	- RK	REVISED SHEET	4-2-2013 SEW
PLLOT SCALE	20,0000' / in.	DRAWN	- RK	REVISED	-
PLLOT DATE		CHECKED	- SEW	REVISED	-
		DATE	- 2-1-2013	REVISED	-

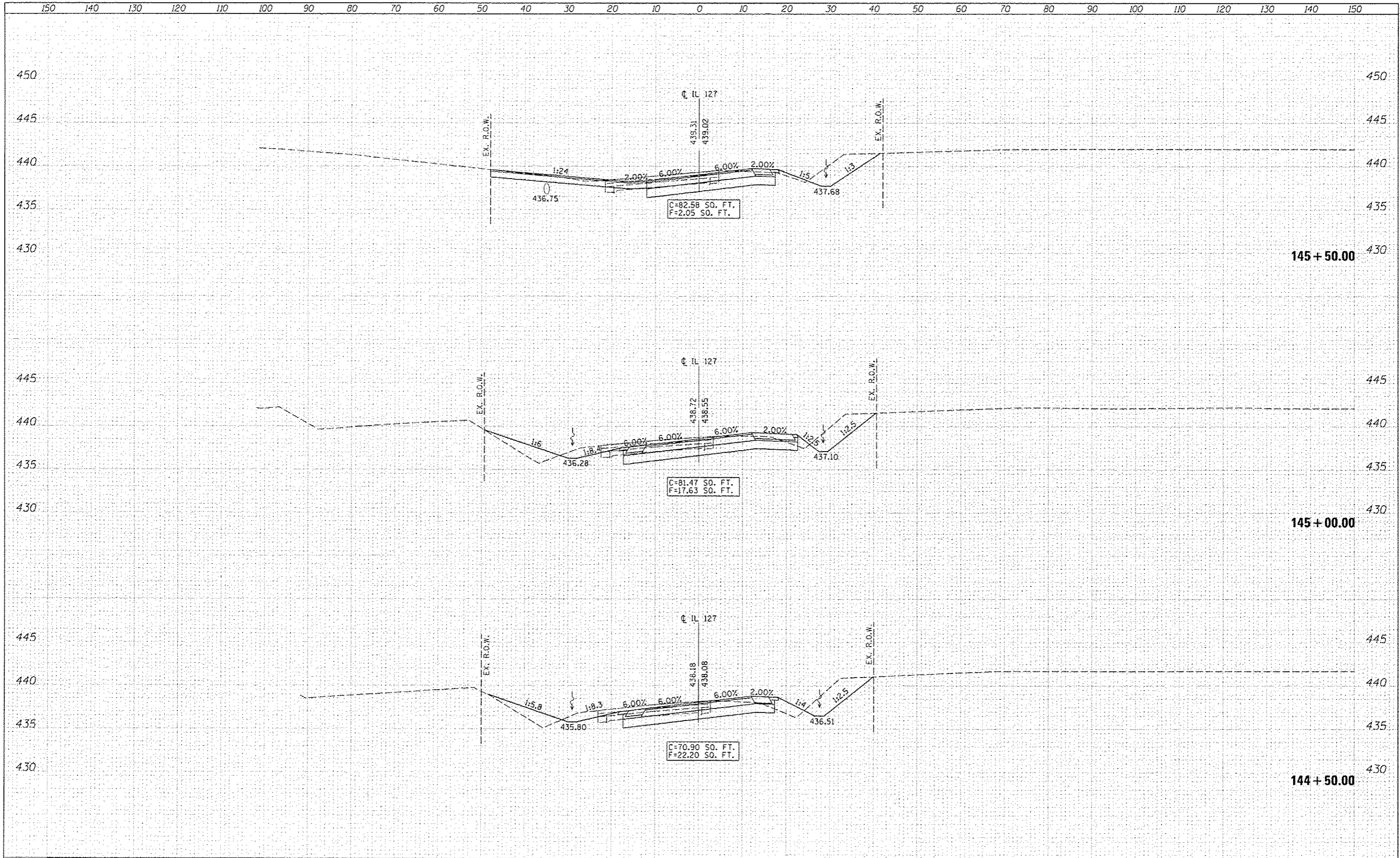
STATE OF ILLINOIS
DEPARTMENT OF TRANSPORTATION

CROSS SECTIONS	
IL 127 OVER KASKASKIA RIVER	
SCALE: 1"=10'H, 5'V	SHEET NO. 5 OF 25 SHEETS
STA. 143+50.00	TO STA. 144+00.00

F.A.P. RTE.	SECTION	COUNTY	TOTAL SHEETS	SHEET NO.
42	1-1BR-2	CLINTON	159	139
			CONTRACT NO.	76479
ILLINOIS FED. AID PROJECT				

DATE	
BY	
DESIGNED	
DRAWN	
CHECKED	
DATE	

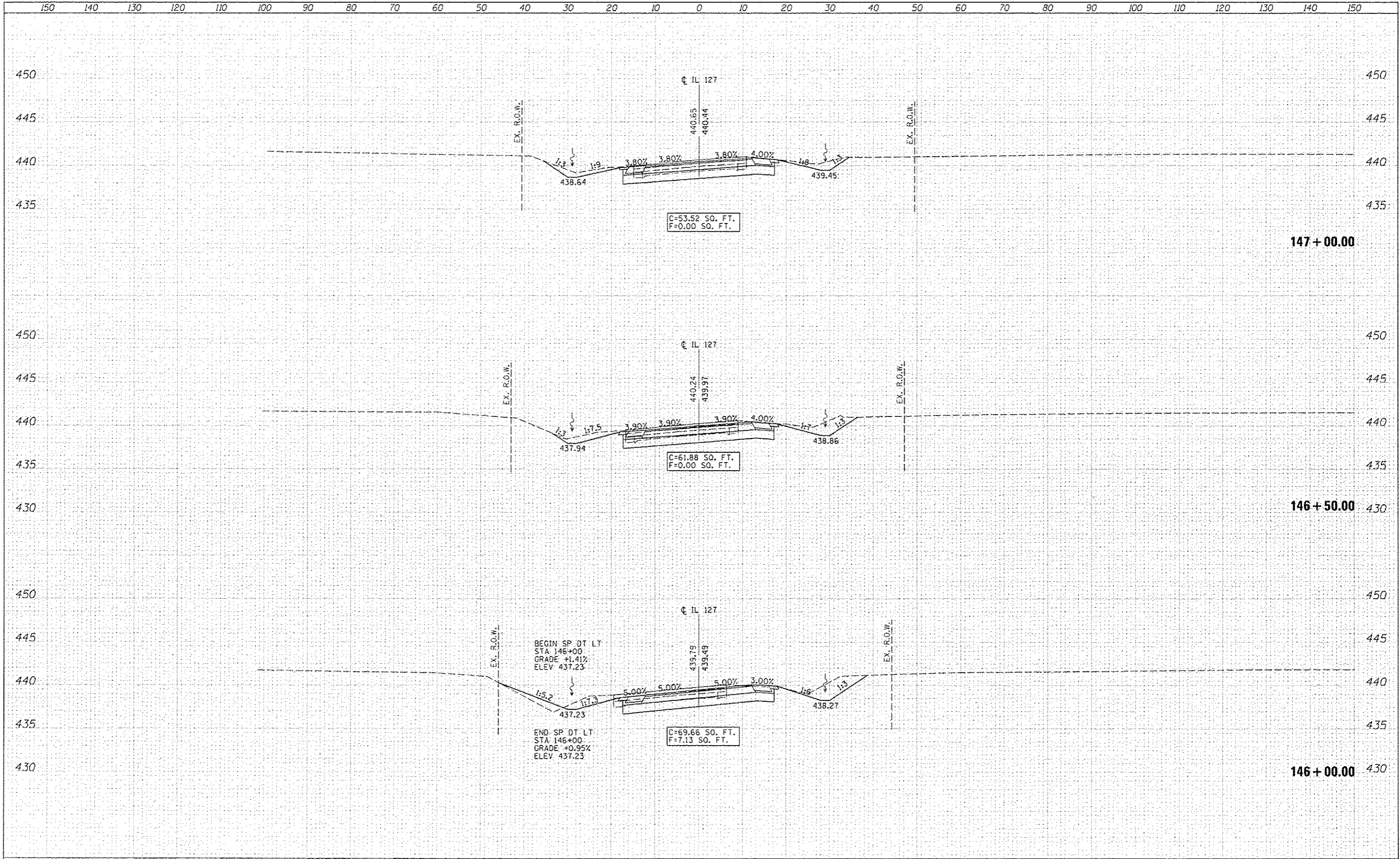
DATE	
BY	
DESIGNED	
DRAWN	
CHECKED	
DATE	



LIN ENGINEERING LTD. Consulting Engineers Westmont, Illinois	USER NAME : Plotted by Scott PLOT SCALE : 20,0000' / in. PLOT DATE :	DESIGNED - RK DRAWN - RK CHECKED - SEW DATE - 2-1-2013	REVISED SHEET 4-2-2013 SEW REVISED - REVISED - REVISED -	STATE OF ILLINOIS DEPARTMENT OF TRANSPORTATION	CROSS SECTIONS IL 127 OVER KASKASKIA RIVER SCALE: 1"=10'H, 5'V SHEET NO. 6 OF 25 SHEETS STA. 144+50.00 TO STA. 145+50.00	F.A.P. RTE. 42 SECTION 1-1BR-2 COUNTY CLINTON TOTAL SHEETS 159 SHEET NO. 140 CONTRACT NO. 76479	ILLINOIS FED. AID PROJECT
---	--	---	---	---	--	--	---------------------------

DATE	
BY	
FINI SURVEY	
PLOTTED	
NOTE BOOK	
AREAS CHECKED	
NO.	

DATE	
BY	
FINI SURVEY	
PLOTTED	
NOTE BOOK	
AREAS CHECKED	
NO.	



LI ENGINEERING, LTD.
Consulting Engineers
Westmore Illinois

USER NAME	Plotted by Scott	DESIGNED	- RK	REVISED SHEET	4-2-2013 SEW
PLLOT SCALE	20,0000' / in.	DRAWN	- RK	REVISED	-
PLLOT DATE		CHECKED	- SEW	REVISED	-
		DATE	- 2-1-2013	REVISED	-

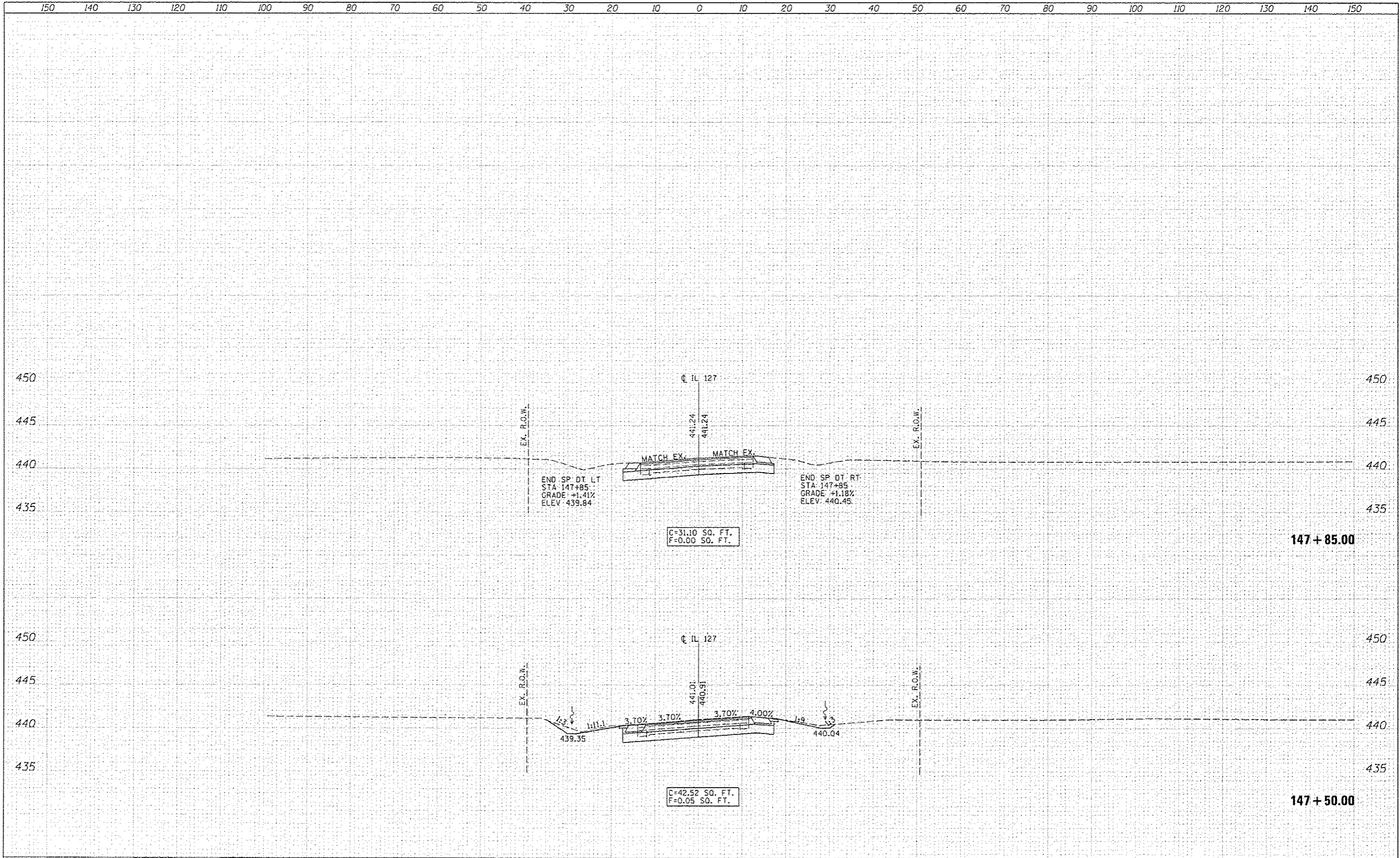
STATE OF ILLINOIS
DEPARTMENT OF TRANSPORTATION

CROSS SECTIONS
IL 127 OVER KASKASKIA RIVER
SCALE: 1"=10'H, 5'V SHEET NO. 7 OF 25 SHEETS STA. 146+00.00 TO STA. 147+00.00

F.A.P. RTE.	SECTION	COUNTY	TOTAL SHEETS	SHEET NO.
42	1-1BR-2	CLINTON	159	141
			CONTRACT NO. 76479	
[ILLINOIS] FED. AID PROJECT				

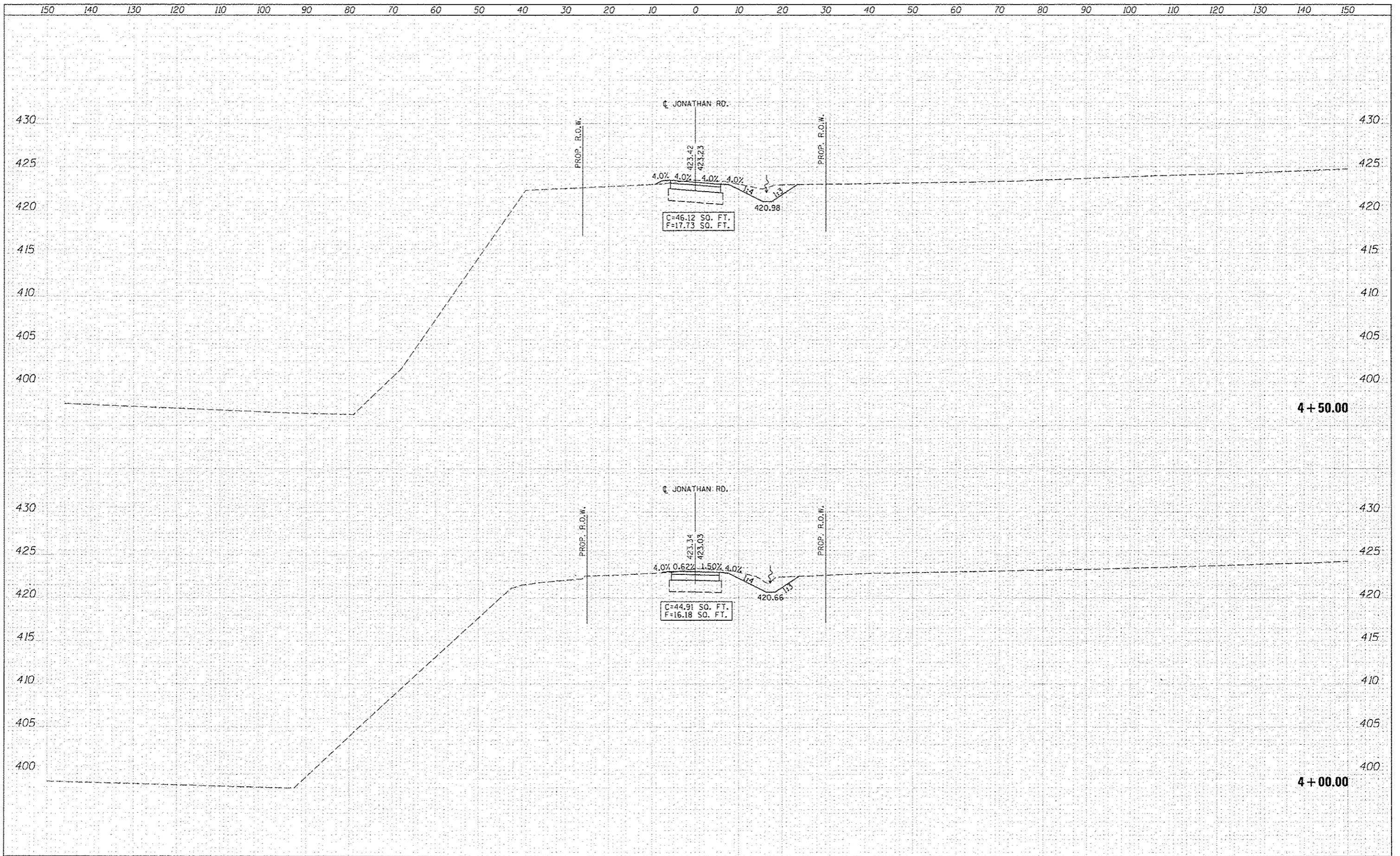
DATE	
BY	
NO.	
AREA CHECKED	
AREAS	
PLotted	
SURVEY	
FINAL	

DATE	
BY	
NO.	
AREA CHECKED	
AREAS	
PLotted	
SURVEY	
ORIGINAL	



DATE	
BY	
FINAL SURVEY	
NOTED SURVEY	
NOTE BOOK	
AREAS	
AREAS CHECKED	

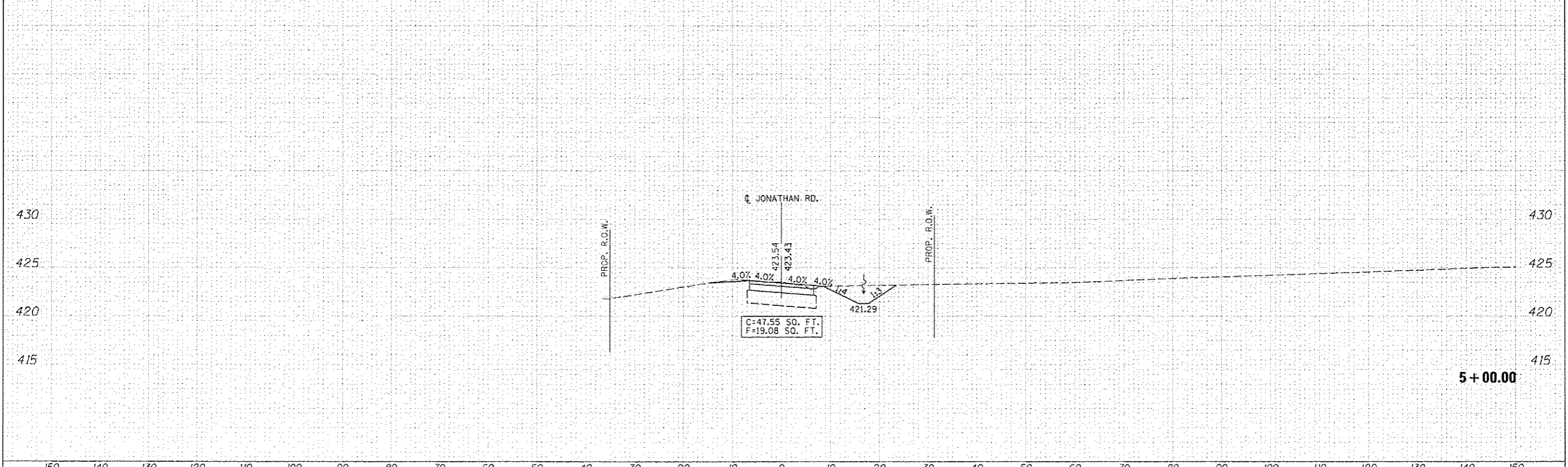
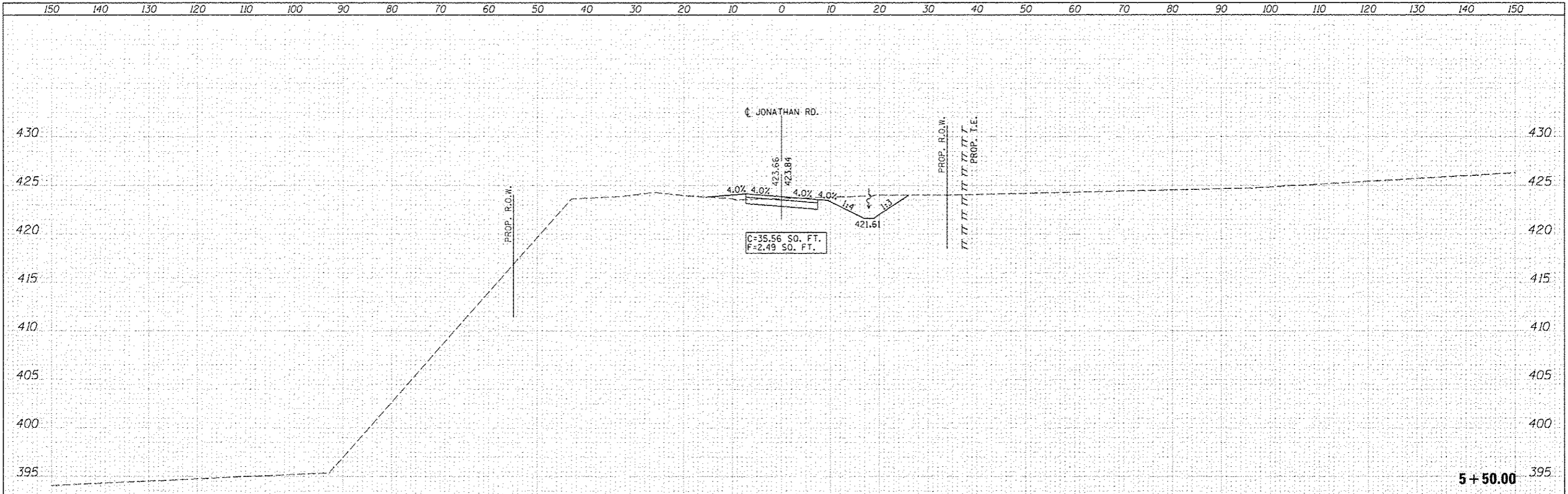
DATE	
BY	
ORIGINAL SURVEY	
NOTED SURVEY	
NOTE BOOK	
AREAS	
AREAS CHECKED	



	USER NAME : Plotted by Scott	DESIGNED - RC	REVISED SHEET Δ 4-2-2013 SEW	STATE OF ILLINOIS DEPARTMENT OF TRANSPORTATION	CROSS SECTIONS JONATHAN ROAD	F.A.P. RTE.	SECTION	COUNTY	TOTAL SHEETS	SHEET NO.
	PLOT SCALE = 28.0000' / in.	CHECKED - SEW	REVISED -			42	1-1BR-2	CLINTON	159	144
	PLOT DATE :	DATE - 2-1-2013	REVISED -	SCALE: 1"=10'H, 5"V SHEET NO. 10 OF 25 SHEETS STA. 4+00.00 TO STA. 4+50.00		ILLINOIS FED. AID PROJECT CONTRACT NO. 76479				

DATE	
BY	
FINAL SURVEY	
SURVEYED	
NOTED	
NO. OF AREAS CHECKED	

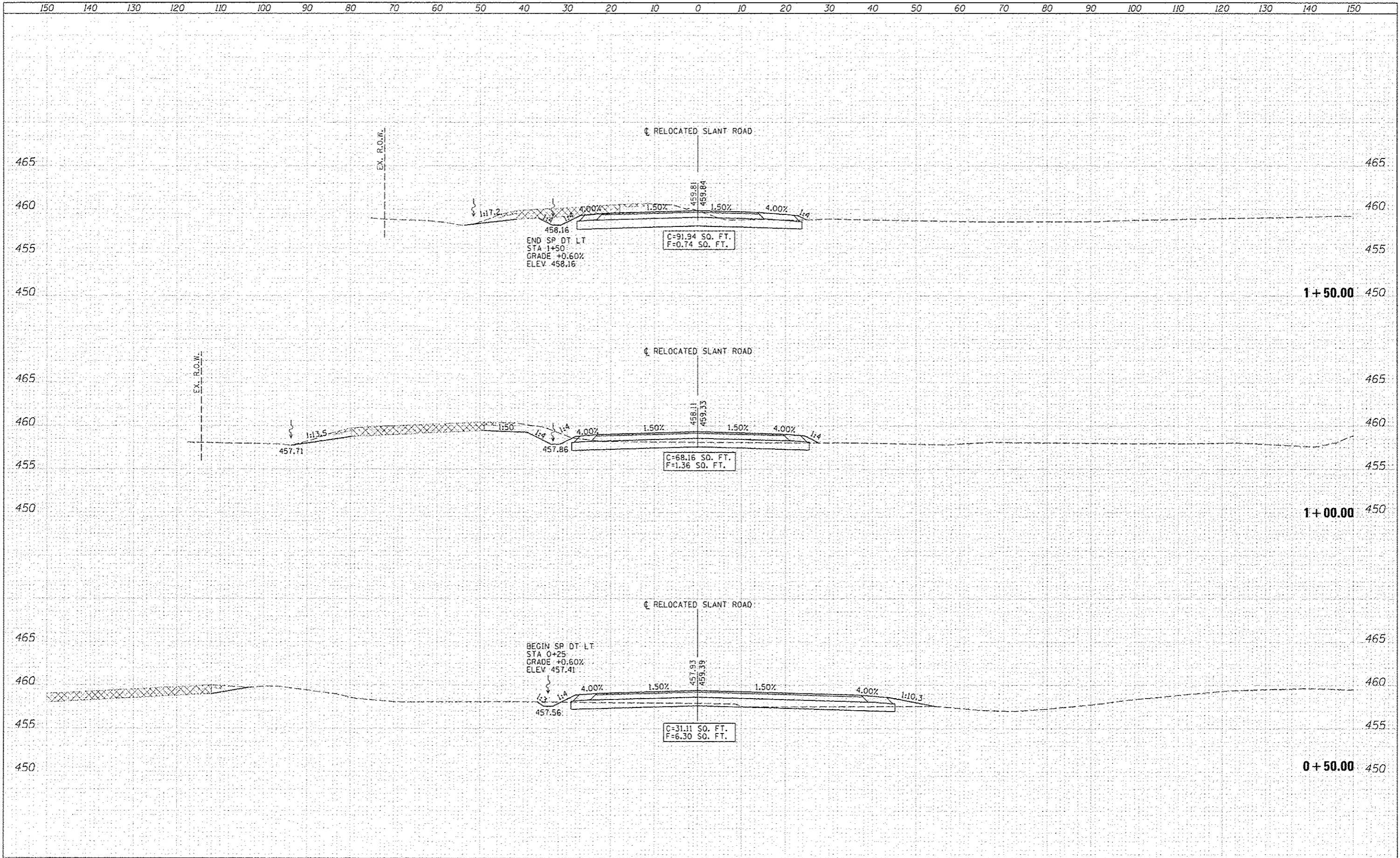
DATE	
BY	
ORIGINAL SURVEY	
SURVEYED	
NOTED	
NO. OF AREAS CHECKED	



LIN ENGINEERING LTD. Consulting Engineers Westmont, Illinois	USER NAME = Plotted by Scott	DESIGNED - RC	REVISED SHEET Δ 4-2-2013 SEW	STATE OF ILLINOIS DEPARTMENT OF TRANSPORTATION	CROSS SECTIONS JONATHAN ROAD				F.A.P. RTE.	SECTION	COUNTY	TOTAL SHEETS	SHEET NO.
	PLOT SCALE = 20.0000' / 1"	CHECKED - SEW	REVISED -		42	1-1BR-2	CLINTON	159	145				
	PLOT DATE =	DATE - 2-1-2013	REVISED -		SCALE: 1"=10'H, 5'V SHEET NO. 11 OF 25 SHEETS STA. 5+00.00 TO STA. 5+50.00				ILLINOIS FED. AID PROJECT				
	CONTRACT NO. 76479												

DATE	
BY	
FINI	
SURVEY	
SAVED	
PLOTTED	
NOTE BOOK	
AREAS	
AREAS CHECKED	
NO.	

DATE	
BY	
FINI	
SURVEY	
SAVED	
PLOTTED	
NOTE BOOK	
AREAS	
AREAS CHECKED	
NO.	



LIN ENGINEERING, LTD.
Consulting Engineers
Westmont, Illinois

USER NAME - Plotted by Scott	DESIGNED - RC	REVISED SHEET - 4-2-2013 SEW
PLOT SCALE - 28,00000' / in.	DRAWN - RC	REVISED -
PLOT DATE -	CHECKED - SEW	REVISED -
	DATE - 2-1-2013	REVISED -

STATE OF ILLINOIS
DEPARTMENT OF TRANSPORTATION

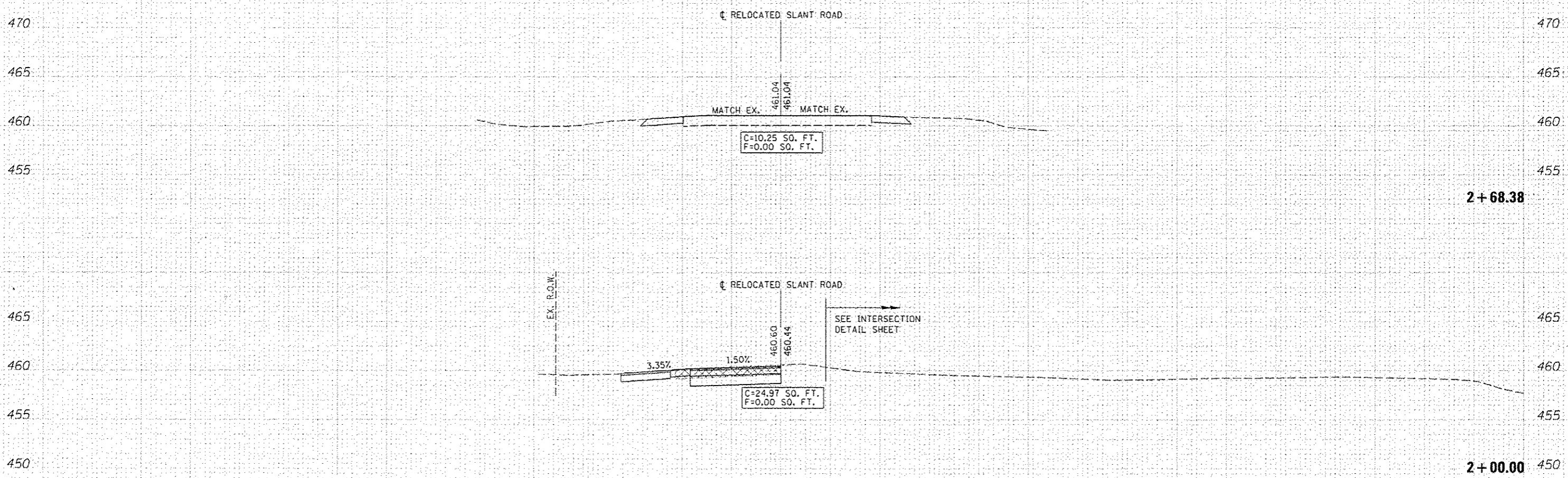
CROSS SECTIONS
RELOCATED SLANT ROAD
SCALE: 1"=10'H, 5'V SHEET NO. 16 OF 25 SHEETS STA. 0+50.00 TO STA. 1+50.00

F.A.P. RTE.	SECTION	COUNTY	TOTAL SHEETS	SHEET NO.
42	1-1BR-2	CLINTON	159	150
			CONTRACT NO. 76479	
[ILLINOIS] FED. AID PROJECT				

150 140 130 120 110 100 90 80 70 60 50 40 30 20 10 0 10 20 30 40 50 60 70 80 90 100 110 120 130 140 150

DATE	
BY	
FINL SURVEY	
SURVEYED	
NOTED	
NO. OF	
AREAS CHECKED	

DATE	
BY	
ORIGINAL SURVEY	
SURVEYED	
NOTED	
NO. OF	
AREAS CHECKED	



150 140 130 120 110 100 90 80 70 60 50 40 30 20 10 0 10 20 30 40 50 60 70 80 90 100 110 120 130 140 150

Lin Engineering Ltd.
Consulting Engineers
Westmont, Illinois

USER NAME	Plotted by Scott	DESIGNED	RC	REVISED SHEET	4-2-2013 SEW
PLOT SCALE	20,0000' / in.	DRAWN	RC	REVISED	-
PLOT DATE		CHECKED	SEW	REVISED	-
		DATE	2-1-2013	REVISED	-

STATE OF ILLINOIS
DEPARTMENT OF TRANSPORTATION

CROSS SECTIONS
RELOCATED SLANT ROAD
SCALE: 1"=10'H, 5'V SHEET NO. 17 OF 25 SHEETS STA. 2+00.00 TO STA. 2+68.38

F.A.P. RTE.	SECTION	COUNTY	TOTAL SHEETS	SHEET NO.
42	1-18R-2	CLINTON	159	151
			CONTRACT NO. 76479	
ILLINOIS FED. AID PROJECT				