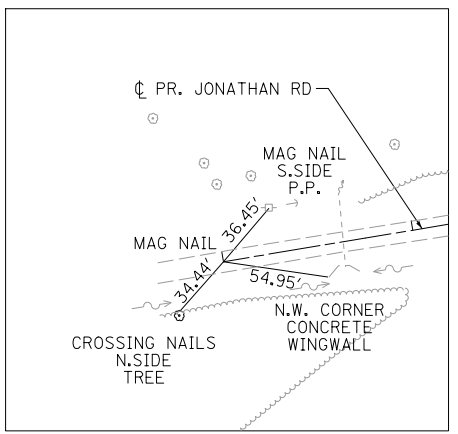


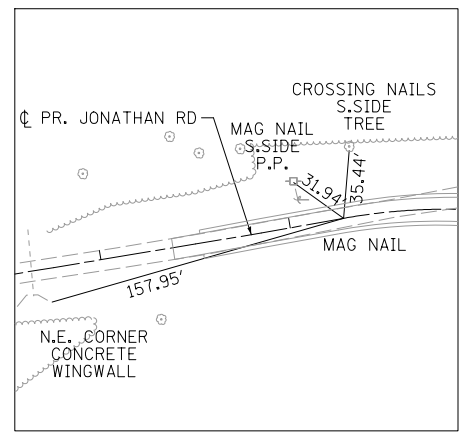
PROP. CURVE NEWJON-1
PI STA. = 5+37.92
$\Delta = 40^\circ 11' 59''$ (RT)
$D = 19^\circ 05' 55''$
$R = 300.00'$
$T = 109.78'$
$L = 210.49'$
$E = 19.46'$
$e = 4\%$
$T.R. = 21'$
$S.E. RUN = 55'$
$P.C. STA. = 4+28.14$
$P.T. STA. = 6+38.62$

PROP. CURVE NEWJON-2
PI STA. = 9+38.54
$\Delta = 64^\circ 16' 26''$ (LT)
$D = 45^\circ 50' 12''$
$R = 125.00'$
$T = 78.52'$
$L = 140.22'$
$E = 22.62'$
$e = 4\%$
$T.R. = 18'$
$S.E. RUN = 49'$
$P.C. STA. = 8+60.02$
$P.T. STA. = 10+00.24$

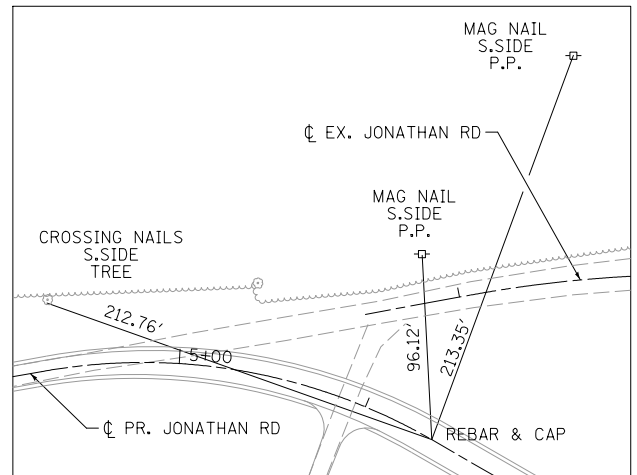
EXIST. CURVE JON-EX1
PI STA. = 7+55.90
$\Delta = 8^\circ 47' 05''$ (RT)
$D = 8^\circ 47' 05''$
$R = 652.22'$
$T = 50.10'$
$L = 100.00'$
$E = 1.92'$
$e = \text{---}$
$T.R. = \text{---}$
$S.E. RUN = \text{---}$
$P.C. STA. = 7+05.80$
$P.T. STA. = 8+05.80$



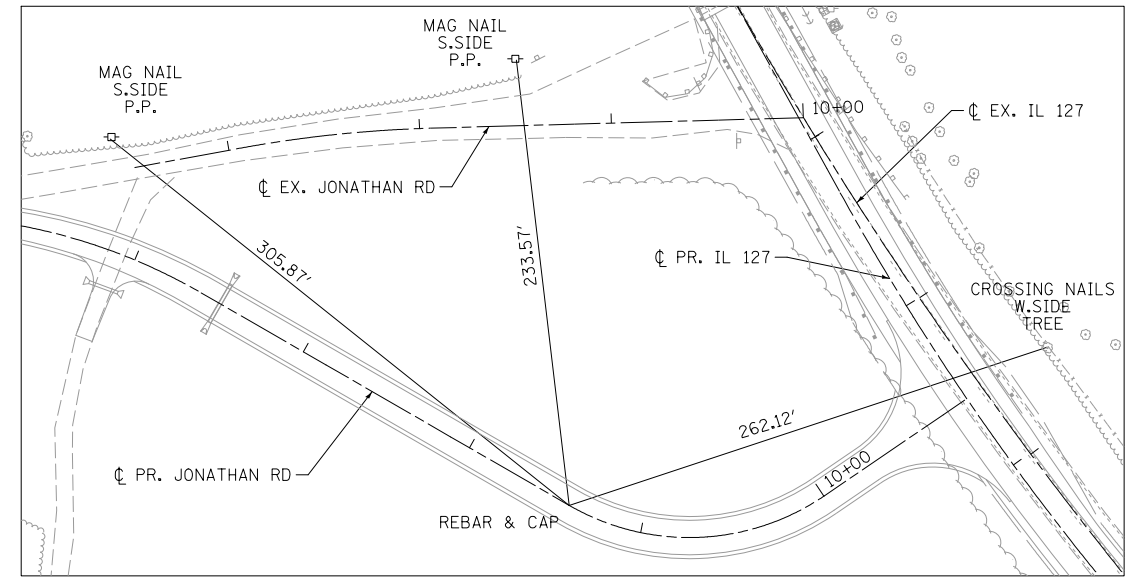
POT STA. 2+00  
 N: 695443.3913  
 E: 523910.9252



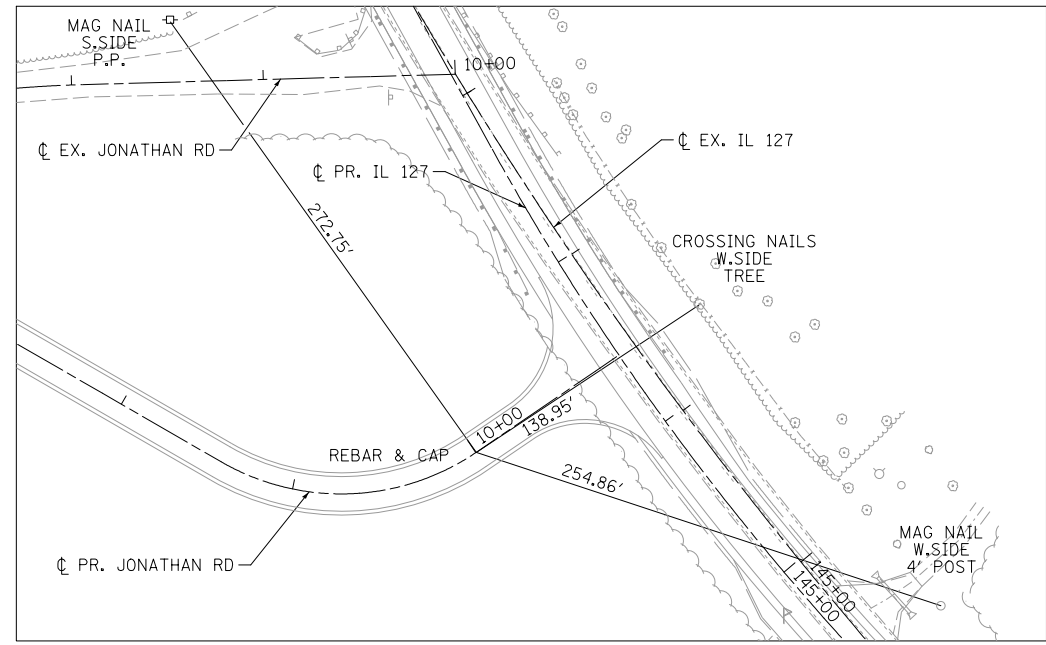
PC STA. 4+28.14  
 N: 695481.3183  
 E: 524135.8860



PT STA. 6+38.62  
 N: 695445.8309  
 E: 524339.0044



PC STA. 8+60.02  
 N: 695335.0999  
 E: 524530.7174



PT STA. 10+00.24  
 N: 695340.0350  
 E: 524663.6118



USER NAME = Plotted by Scott	DESIGNED - RWK	REVISED -
PLOT SCALE = 100.0000' / in.	DRAWN - RWK	REVISED -
PLOT DATE =	CHECKED - SEW	REVISED -
	DATE - 2-1-2013	REVISED -

**STATE OF ILLINOIS  
 DEPARTMENT OF TRANSPORTATION**

**ALIGNMENT, TIES & BENCHMARKS  
 ILLINOIS ROUTE 127**

SCALE: 1"=50'      SHEET NO. 2 OF 4 SHEETS      STA. N/A TO STA. N/A

F.A.P. RTE.	SECTION	COUNTY	TOTAL SHEETS	SHEET NO.
42	1-1BR-2	CLINTON	159	26
CONTRACT NO. 76479				
ILLINOIS FED. AID PROJECT				