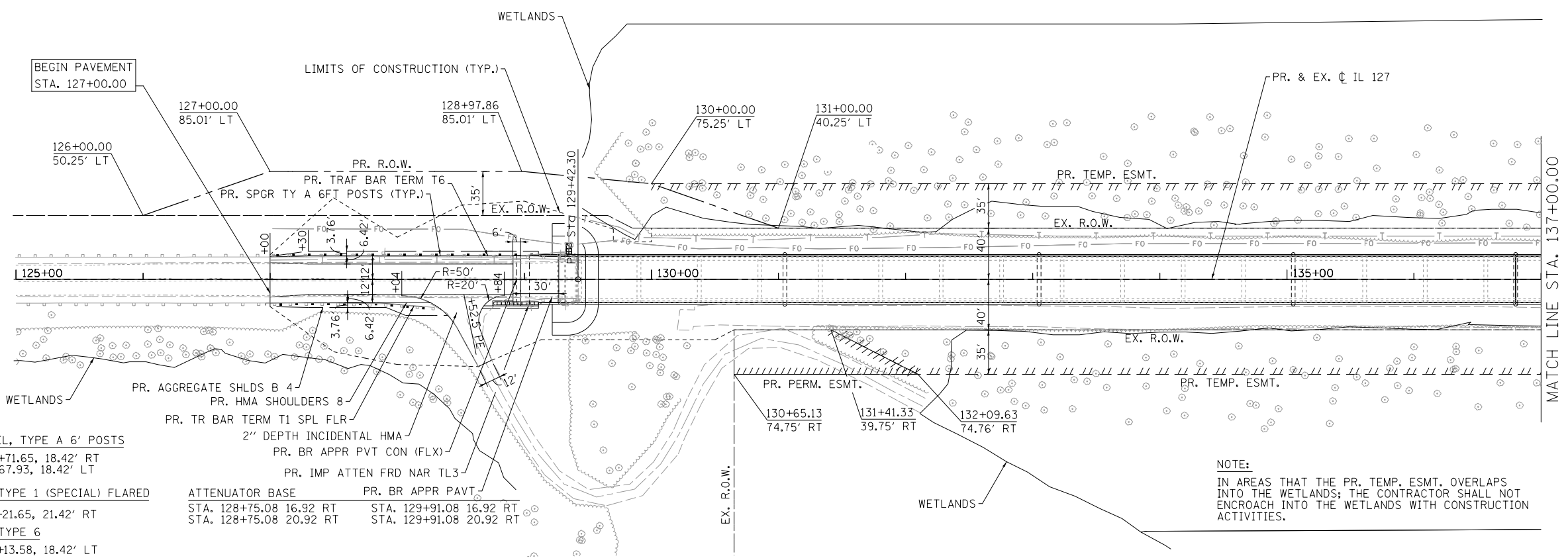


PLAN	SURVEYED	BY	DATE
	PLOTTED		
	ALIGNED		
	CHECKED		
	FILED		
NOTE BOOK NO.	CADD FILE NAME		



PROPOSED STEEL PLATE BEAM GUARDRAIL, TYPE A 6' POSTS  
 STA. 126+96.65, 18.32' RT TO STA. 127+71.65, 18.42' RT  
 STA. 127+05.93, 17.81 LT TO STA. 128+67.93, 18.42' LT

PROPOSED TRAFFIC BARRIER TERMINAL TYPE 1 (SPECIAL) FLARED  
 STA. 127+71.65, 18.42' RT TO STA. 128+21.65, 21.42' RT

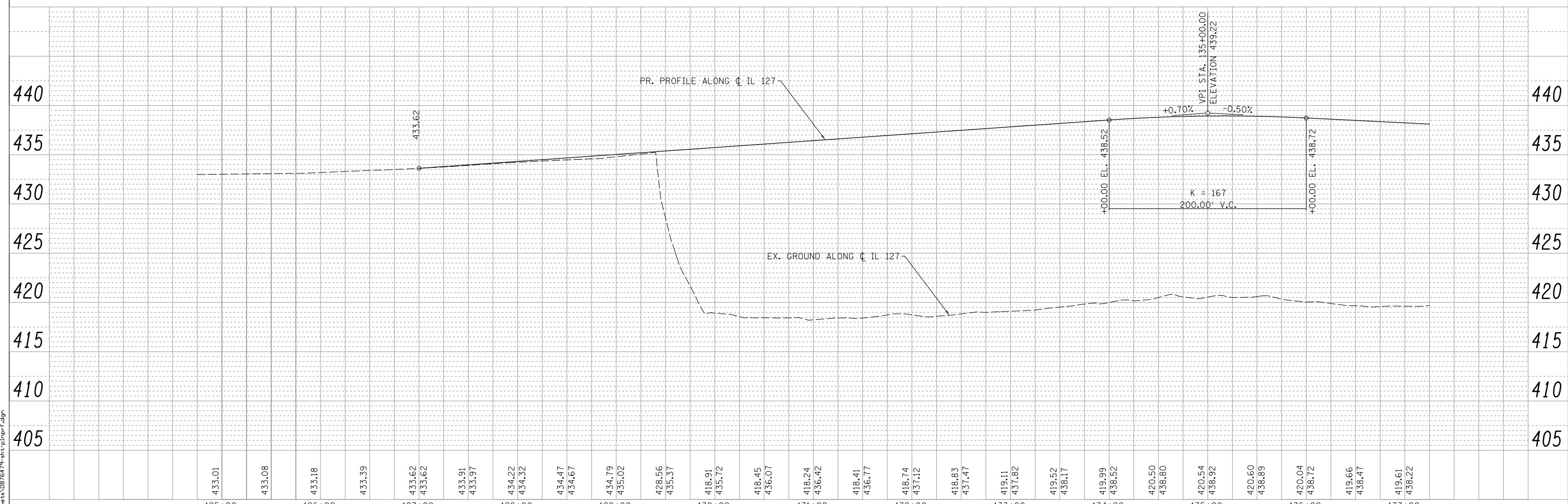
PROPOSED TRAFFIC BARRIER TERMINAL TYPE 6  
 STA. 128+67.93, 18.42' LT TO STA. 129+13.58, 18.42' LT

PR. BR APPR PVT CON (FLX)  
 STA. 128+75.08 16.92 RT  
 STA. 128+75.08 20.92 RT

PR. BR APPR PAVT  
 STA. 129+91.08 16.92 RT  
 STA. 129+91.08 20.92 RT

NOTE:  
 IN AREAS THAT THE PR. TEMP. ESMT. OVERLAPS INTO THE WETLANDS; THE CONTRACTOR SHALL NOT ENCROACH INTO THE WETLANDS WITH CONSTRUCTION ACTIVITIES.

PROFILE	SURVEYED	BY	DATE
	PLOTTED		
	GRADES CHECKED		
	STRUCTURE NOTATIONS CHECKED		
NOTE BOOK NO.	NOTATIONS CHECKED		



E:\1024\Plan Sheets\0876479-sh1-plnpr.fgd



USER NAME = Plotted by Scott	DESIGNED - RK	REVISED -
	DRAWN - RK	REVISED -
PLOT SCALE = 100.0000' / in.	CHECKED - SEW	REVISED -
PLOT DATE	DATE - 2-1-2013	REVISED -

**STATE OF ILLINOIS  
 DEPARTMENT OF TRANSPORTATION**

<b>PLAN AND PROFILE IL 127 OVER KASKASKIA RIVER</b>		
SCALE: 1" = 50'	SHEET NO. 1 OF 2 SHEETS	STA. 127+00 TO STA. 137+00

F.A. RTE.	SECTION	COUNTY	TOTAL SHEETS	SHEET NO.
42	1-1BR-2	CLINTON	159	29
				CONTRACT NO. 76479
ILLINOIS FED. AID PROJECT				