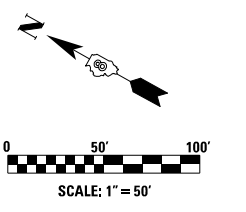
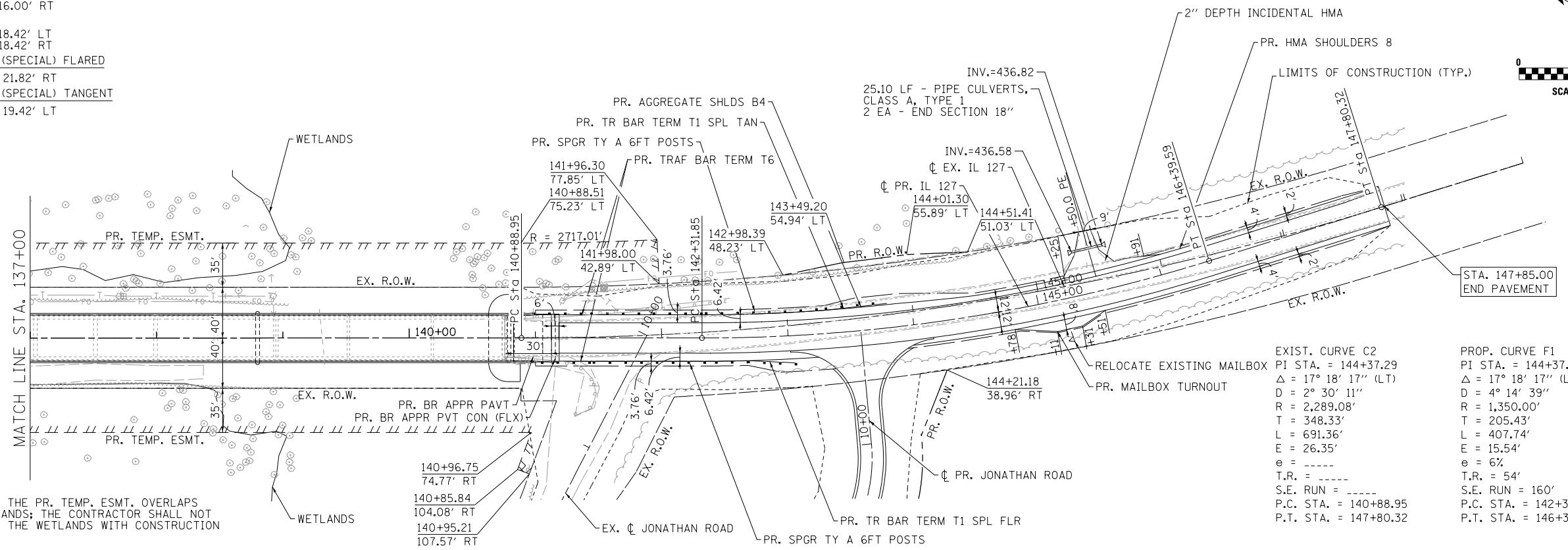


PROPOSED STEEL PLATE BEAM GUARDRAIL, TYPE A, 6' POST
 STA. 141+43.17, 18.42' LT TO STA. 143+30.67, 16.00' LT
 STA. 141+43.17, 18.42' RT TO STA. 142+55.67, 16.00' RT
 PROPOSED TRAFFIC BARRIER TERMINAL TYPE 6
 STA. 140+97.52, 18.42' LT TO STA. 141+43.17, 18.42' LT
 STA. 140+97.52, 18.42' RT TO STA. 141+43.17, 18.42' RT
 PROPOSED TRAFFIC BARRIER TERMINAL TYPE 1 (SPECIAL) FLARED
 STA. 142+55.67, 18.42' RT TO STA. 143+05.67, 21.82' RT
 PROPOSED TRAFFIC BARRIER TERMINAL TYPE 1 (SPECIAL) TANGENT
 STA. 143+30.67, 18.42' LT TO STA. 143+80.67, 19.42' LT

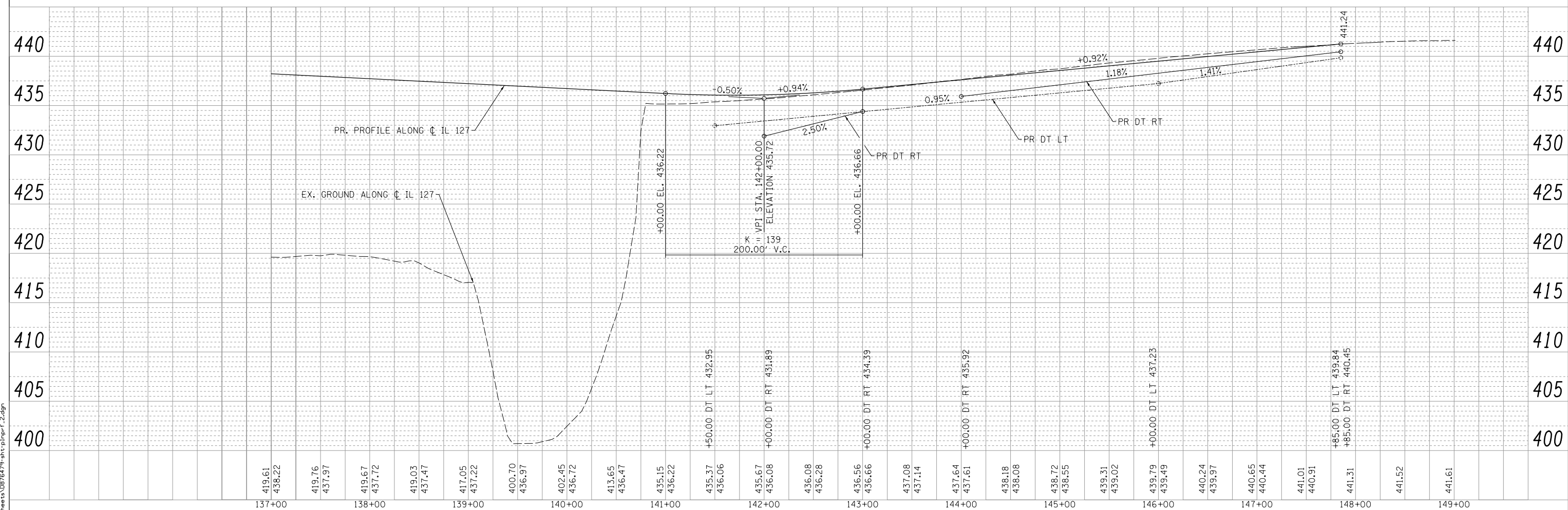


PLAN	SURVEYED	DATE
	PLOTTED	
	NOTED	
	CHECKED	
	FILED	
	NO.	



NOTE:
 IN AREAS THAT THE PR. TEMP. ESMT. OVERLAPS INTO THE WETLANDS; THE CONTRACTOR SHALL NOT ENCROACH INTO THE WETLANDS WITH CONSTRUCTION ACTIVITIES.

PROFILE	SURVEYED	DATE
	PLOTTED	
	GRADES CHECKED	
	STRUCTURE NOTATIONS CHECKED	
	NO.	



E:\1024\Plan Sheets\0876479-plt-pl\prf_2.dgn

LIN ENGINEERING, LTD. Consulting Engineers Westmont, Illinois	USER NAME = Plotted by Scott	DESIGNED - RK	REVISED -	STATE OF ILLINOIS DEPARTMENT OF TRANSPORTATION	PLAN AND PROFILE IL 127 OVER KASKASKIA RIVER			F.A. R.T.E. = 42	SECTION = 1-1BR-2	COUNTY = CLINTON	TOTAL SHEETS = 159	SHEET NO. = 30	
	PLOT SCALE = 100.0000' / in.	CHECKED - SEW	REVISED -		SCALE: 1" = 50'	SHEET NO. 2 OF 2 SHEETS	STA. STA. 137+00 TO STA. 149+00	CONTRACT NO. 76479					
	PLOT DATE	DATE - 2-1-2013	REVISED -		ILLINOIS FED. AID PROJECT								