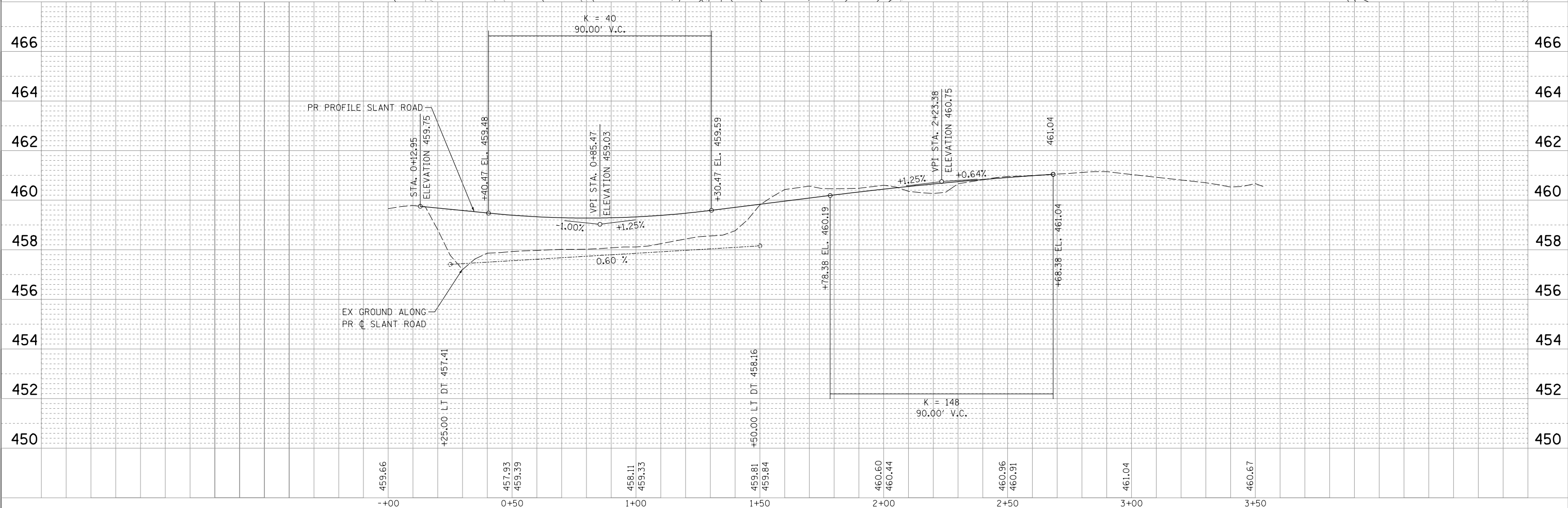
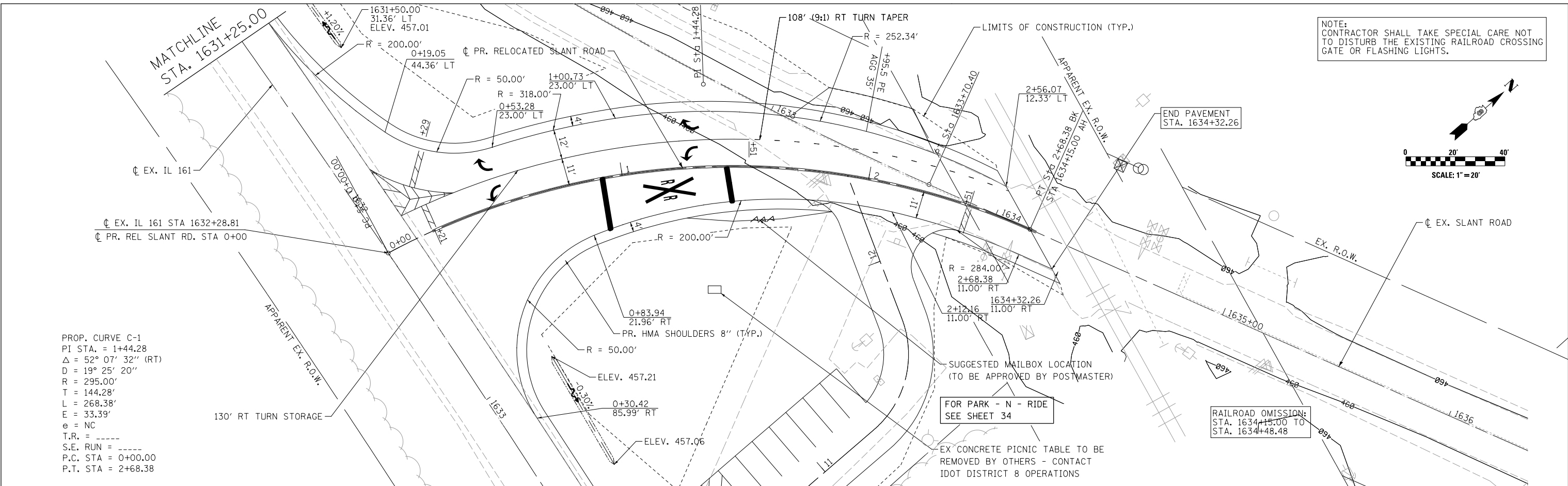
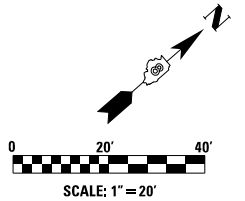


PLAN	SURVEYED	DATE
	PLOTTED	BY
	ALIGNED	
	CHECKED	
	FILED	
	NO.	

PROFILE	SURVEYED	DATE
	PLOTTED	BY
	GRADES	
	CHECKED	
	STRUCTURE	
	NOTATIONS	
	CHKD	
	NO.	

NOTE:  
CONTRACTOR SHALL TAKE SPECIAL CARE NOT  
TO DISTURB THE EXISTING RAILROAD CROSSING  
GATE OR FLASHING LIGHTS.



E:\1024\Plan Sheets\0876479-shr-rel-slant.plnpr.f.dgn

**LIN ENGINEERING, LTD.**  
Consulting Engineers  
Westmont, Illinois

USER NAME = Plotted by Scott	DESIGNED - RK	REVISED -
	DRAWN - RK	REVISED -
PLOT SCALE = 40.0000' / in.	CHECKED - SEW	REVISED -
PLOT DATE	DATE - 2-1-2013	REVISED -

**STATE OF ILLINOIS  
DEPARTMENT OF TRANSPORTATION**

**PLAN AND PROFILE  
RELOCATED SLANT ROAD**

SCALE: 1" = 20'    SHEET NO. 2 OF 2 SHEETS    STA. 0+00 TO STA. 2+68.38

F.A. RTE.	SECTION	COUNTY	TOTAL SHEETS	SHEET NO.
42	1-1BR-2	CLINTON	159	33
CONTRACT NO. 76479				
ILLINOIS FED. AID PROJECT				