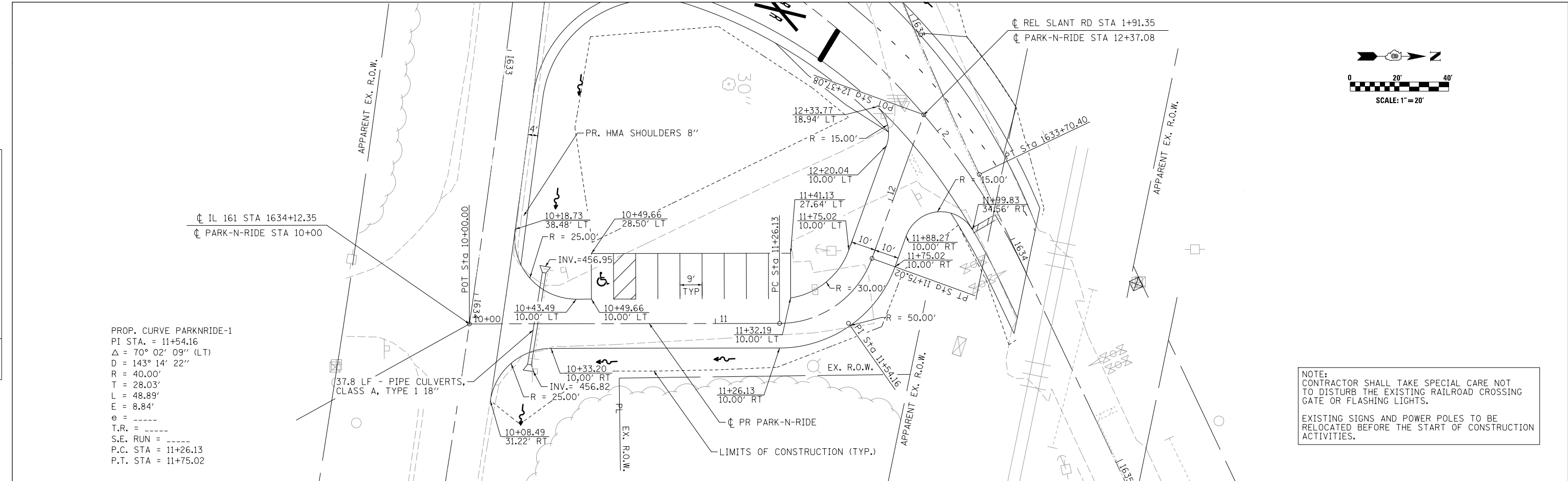


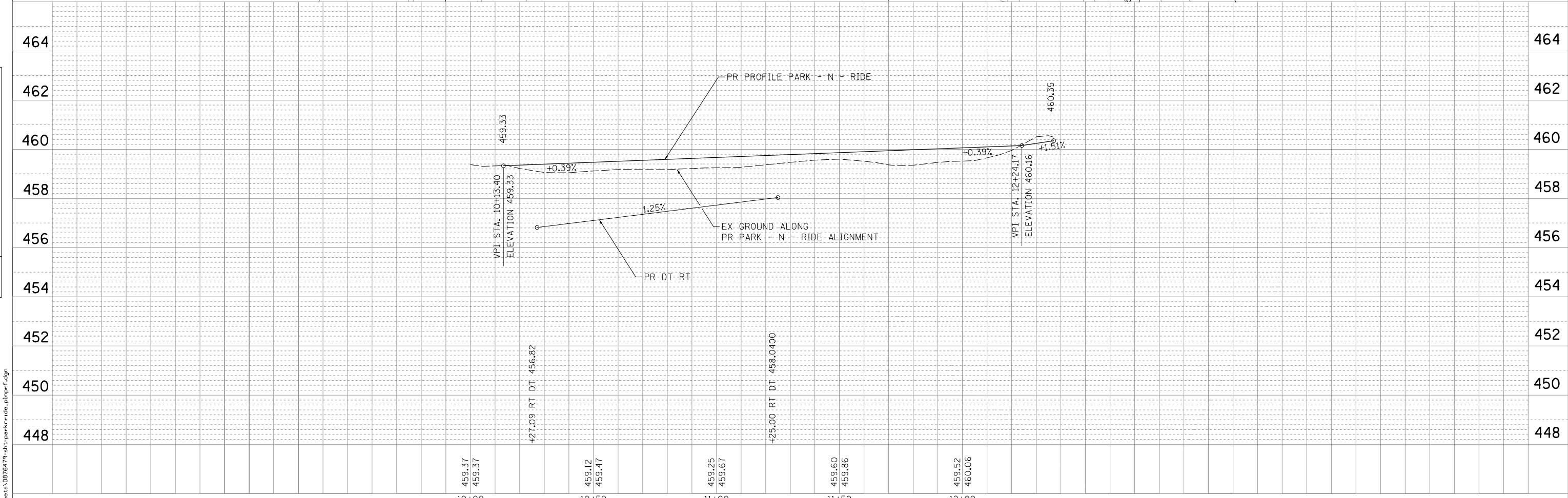
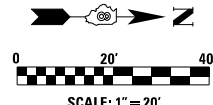
PLAN	SURVEYED	BY	DATE
	PLOTTED		
	ALIGNED		
	CHECKED		
	FILED		
	NO.		

PROFILE	SURVEYED	BY	DATE
	PLOTTED		
	GRADES		
	CHECKED		
	STRUCTURE		
	NOTATIONS		
	CHKD		
	NO.		



PROP. CURVE PARKNRIE-1  
 PI STA. = 11+54.16  
 $\Delta = 70^\circ 02' 09''$  (LT)  
 $D = 143^\circ 14' 22''$   
 $R = 40.00'$   
 $T = 28.03'$   
 $L = 48.89'$   
 $E = 8.84'$   
 $e = \text{-----}$   
 $T.R. = \text{-----}$   
 $S.E. \text{ RUN} = \text{-----}$   
 $P.C. \text{ STA} = 11+26.13$   
 $P.T. \text{ STA} = 11+75.02$

NOTE:  
 CONTRACTOR SHALL TAKE SPECIAL CARE NOT  
 TO DISTURB THE EXISTING RAILROAD CROSSING  
 GATE OR FLASHING LIGHTS.  
 EXISTING SIGNS AND POWER POLES TO BE  
 RELOCATED BEFORE THE START OF CONSTRUCTION  
 ACTIVITIES.



 <b>LIN ENGINEERING, LTD.</b> Consulting Engineers Westmont, Illinois	USER NAME = Plotted by Scott	DESIGNED - RK	REVISED -	<b>STATE OF ILLINOIS</b> <b>DEPARTMENT OF TRANSPORTATION</b>	<b>PLAN AND PROFILE</b> <b>PARK-N-RIDE &amp; IL 161</b>		F.A. RTE.	SECTION	COUNTY	TOTAL SHEETS	SHEET NO.
	PLOT SCALE = 40.0000' / in.	CHECKED - SEW	REVISED -		42	1-1BR-2	CLINTON	159	34		
	PLOT DATE	DATE - 2-1-2013	REVISED -		1" = 20'	SHEET NO. 1 OF 1 SHEETS	STA. 10+00 TO STA. 12+37.08	CONTRACT NO. 76479		ILLINOIS FED. AID PROJECT	

E:\1024\Plan Sheets\0876479-shr-parknride.plnprf.dgn