

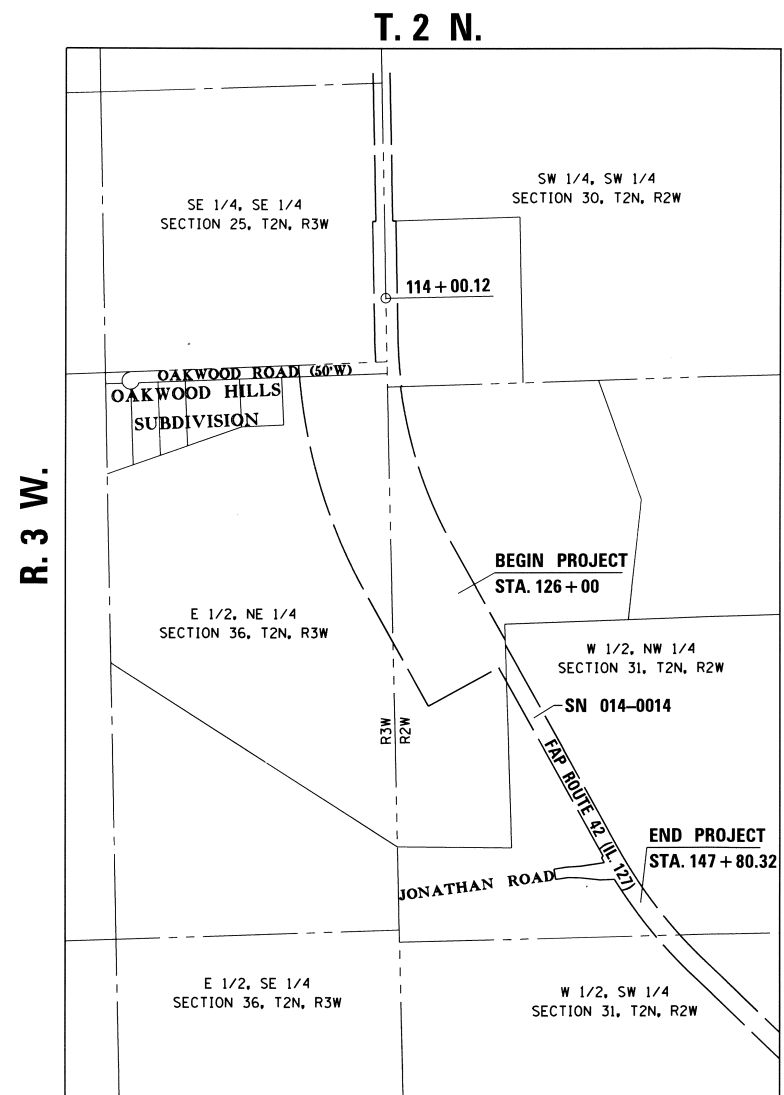
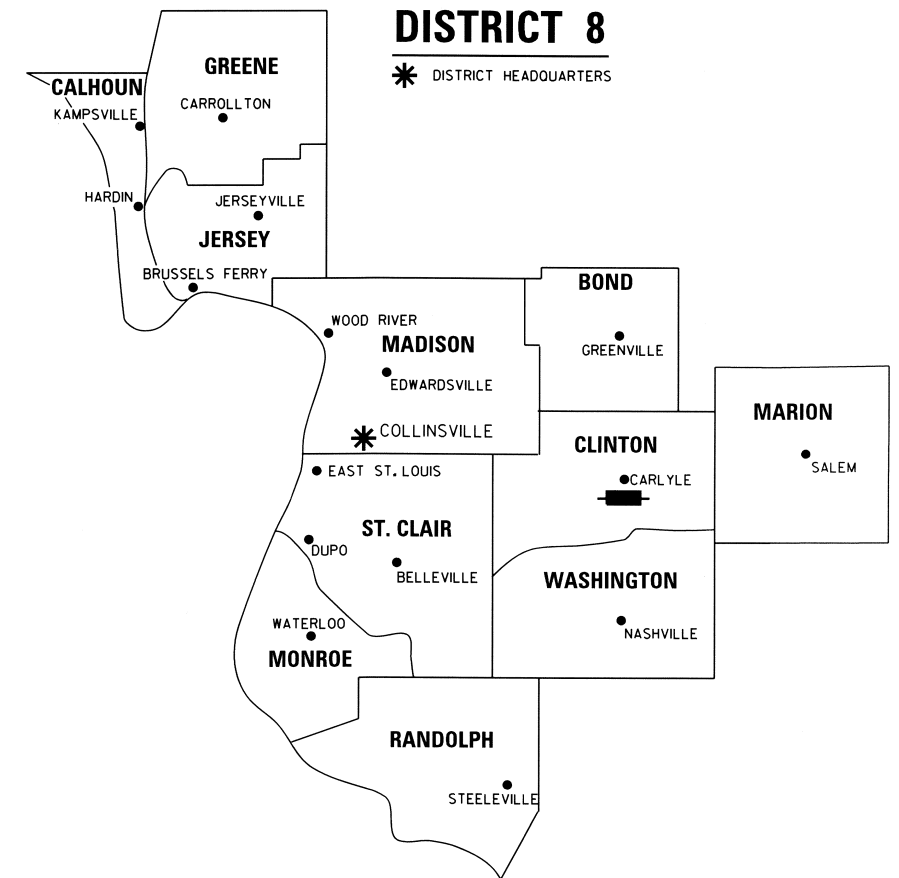
SHEET INDEX		
SHEET NO.	STATION TO STATION	DESCRIPTION
1		COVER SHEET
2		LEGEND/NOTE SHEET
3	113+00 TO 124+00	EXISTING R.O.W.
4	124+00 TO 137+00	PAR. 8007001 & 8007002
5	137+00 TO 150+00	PAR. 8007003 & 8007004
6		TOTAL HOLDINGS & SECTION DETAIL
7		SECTION TIES & CONTROL TIES

STATE OF ILLINOIS
DEPARTMENT OF TRANSPORTATION
DIVISION OF HIGHWAYS

PLAT OF HIGHWAYS

FAP ROUTE 42 (IL 127)
SECTION 1-1BR-2
CLINTON COUNTY
JOB NO.
R-98-007-10

SPACE RESERVED FOR RECORDING OFFICER



PROJECT LENGTH = 1,900 LIN. FT. = 0.3598 MILES

PREPARED BY:
ASSOCIATED PROFESSIONALS, INC.
17625 Mockingbird Road, P.O. Box 311
Nashville, Illinois 62263
Ph. 618-478-9000 Fax 618-478-9001
web: www.apisurvey.com
IDPR Design Firm License No. 184-001303



Gary S. Mueller 7/20/2012
GARY S. MUELLER, I.P.L.S. # 3332
EXPIRATION DATE: 11-30-2012

LOCATION OF SECTION INDICATED THUS: [Symbol]

SHEET 1 OF 7

ILLINOIS DEPARTMENT OF TRANSPORTATION DIVISION OF HIGHWAYS/REGION 5/DISTRICT 8 1102 EASTPORT PLAZA DRIVE COLLINSVILLE, ILLINOIS 62234-6198				
F.A.P. RTE.	SECTION	COUNTY	TOTAL SHEETS	SHEET NO.
42	1-1BR-2	CLINTON	159	55
CONTRACT NO. 76479				
FED. ROAD DIST. NO. 8 ILLINOIS FED. AID PROJECT				