

DESIGN SCOUR ELEVATION TABLE

| FREQ. YR. | DESIGN SCOUR ELEVATION (ft.) | | | | | | |
|-----------|------------------------------|--------|--------|--------|--------|--------|----------|
| | N. Abut. | Pier 1 | Pier 2 | Pier 3 | Pier 4 | Pier 5 | S. Abut. |
| 100 | 423.40 | 408.50 | 409.10 | 411.80 | 409.20 | 388.90 | 423.98 |
| 500 | 423.40 | 406.50 | 407.10 | 409.80 | 408.20 | 388.70 | 423.98 |

WATERWAY INFORMATION

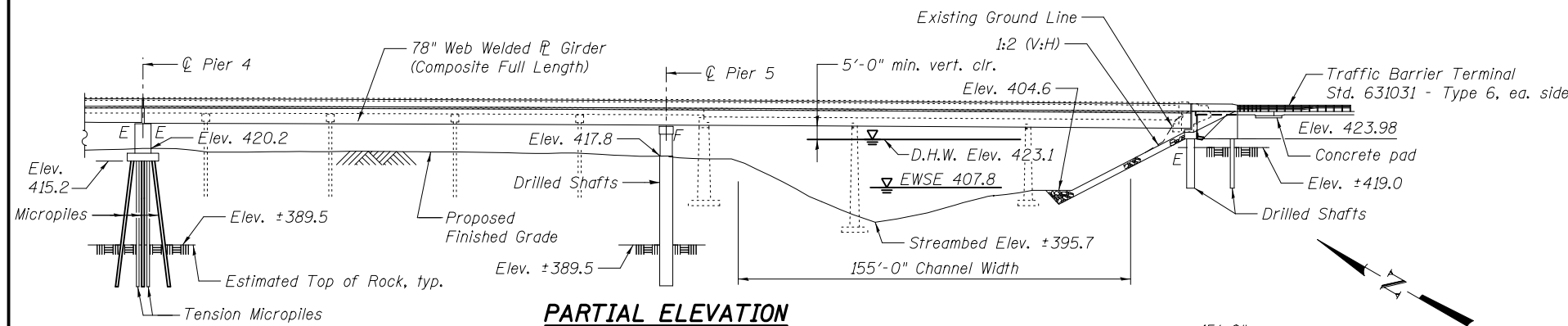
Drainage Area = 2734 sq. mi. Exist. Low Grade Elev. 432.82 @ Sta. 121+50
 Prop. Low Grade Elev. 432.82 @ Sta. 121+50

| Flood | Freq. Yr. | Q C.F.S. | Opening Sq. Ft. Exist. | Opening Sq. Ft. Prop. | Nat. H.W.E. | Head - Ft. Exist. | Head - Ft. Prop. | Headwater El. Exist. | Headwater El. Prop. |
|-------------|-----------|----------|------------------------|-----------------------|-------------|-------------------|------------------|----------------------|---------------------|
| Min Calc | 10 | 13380 | 4852 | 5128 | 422.25 | 1.94 | 1.71 | 424.19 | 423.96 |
| Overtopping | - | - | - | - | - | - | - | - | - |
| Design | 50 | 16800 | 5775 | 6092 | 423.12 | 1.94 | 1.68 | 425.06 | 424.80 |
| Base | 100 | 18100 | 6095 | 6425 | 423.42 | 1.94 | 1.67 | 425.36 | 425.09 |
| Max. Calc. | 500 | 20815 | 6751 | 7071 | 424.00 | 1.96 | 1.66 | 425.96 | 425.66 |

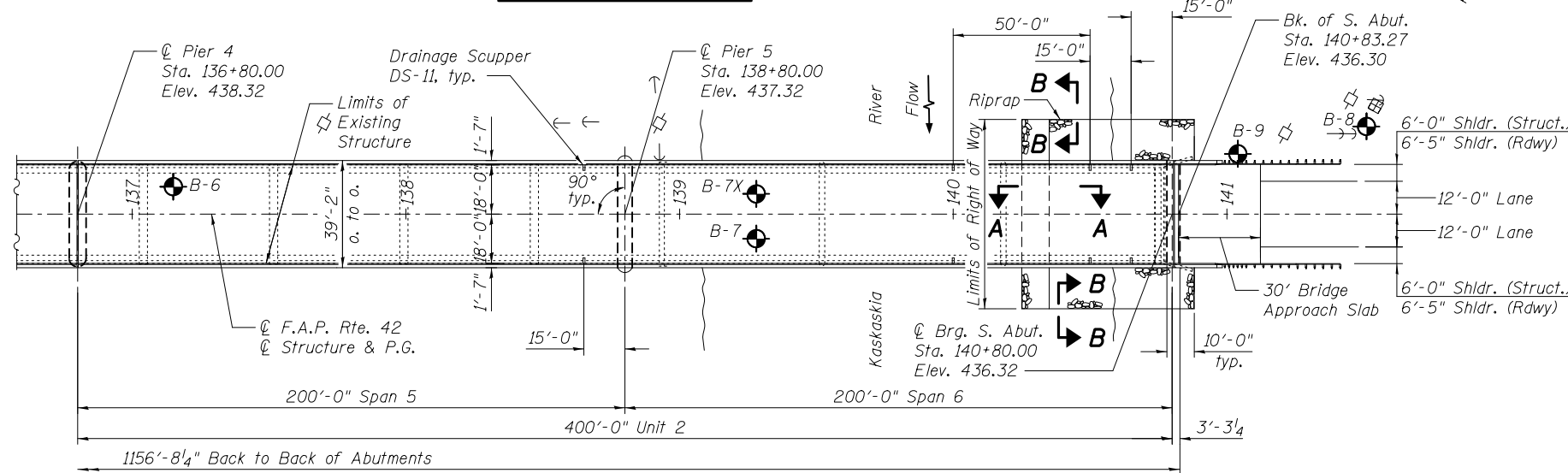
10 year velocity through Existing Bridge = 2.25 fps
 10 year velocity through Proposed Bridge = 2.19 fps

UTILITY LEGEND

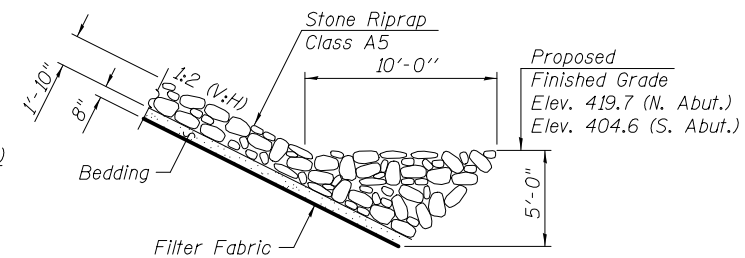
- ⊕ Existing Power Pole
- Existing Anchor Line
- ⊞ Existing Telephone Splicebox



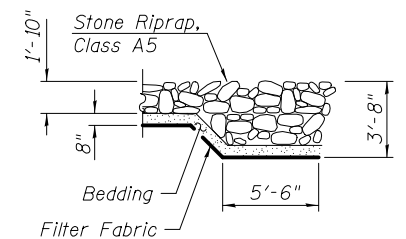
PARTIAL ELEVATION



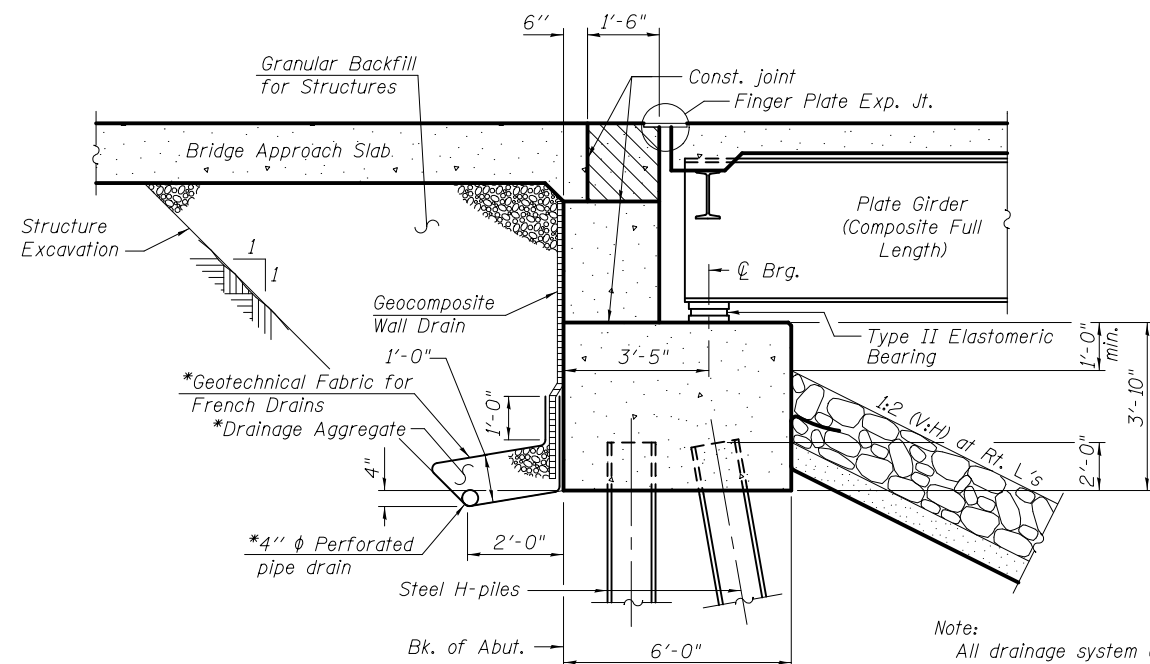
PARTIAL PLAN



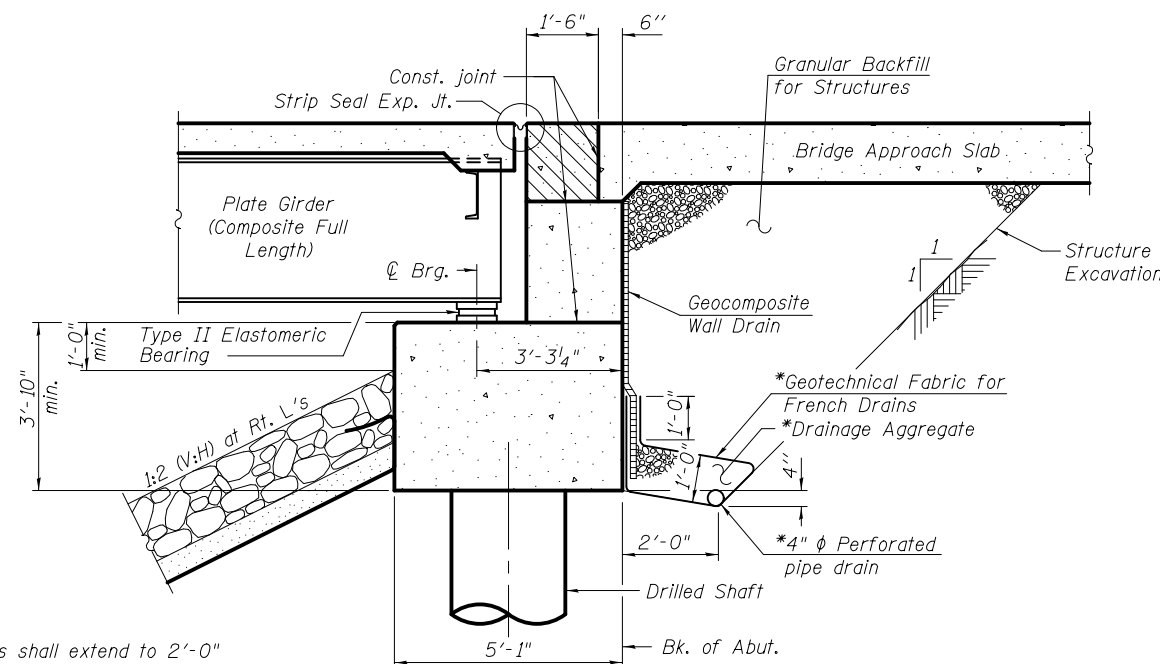
SECTION A-A



SECTION B-B



SECTION THRU NORTH ABUTMENT



SECTION THRU SOUTH ABUTMENT

Note:
 All drainage system components shall extend to 2'-0" from the end of each wingwall except an outlet pipe shall extend until intersecting with the side slopes. The pipes shall drain into concrete headwalls. (See Article 601.05 of the Standard Specifications and Highway Standard 601101.) Concrete headwalls shall be included in the cost of Pipe Underdrains for Structures 4".

* Included in the cost of Pipe Underdrains for Structures 4".

STATION 135+04.92
 BUILT 201 BY
 STATE OF ILLINOIS
 F.A.P. RTE. 42 SEC. 1-1BR-2
 LOADING HL-93
 STRUCTURE NO. 014-0033

NAME PLATE
 See Std. 515001

GENERAL PLAN AND ELEVATION - 2
ILLINOIS ROUTE 127 OVER
KASKASKIA RIVER (PUBLIC WATER)
F.A.P. ROUTE 42 - SEC. 1-1BR-2
CLINTON COUNTY
STATION 135+04.92
STRUCTURE NO. 014-0033



| | | |
|----------------------|----------------|---------|
| USER NAME = | DESIGNED - RLM | REVISED |
| PLOT SCALE = | CHECKED - JTH | REVISED |
| PLOT DATE = 2/1/2013 | DRAWN - PRC | REVISED |
| | CHECKED - RLM | REVISED |

STATE OF ILLINOIS
 DEPARTMENT OF TRANSPORTATION

SHEET NO. 2 OF 61 SHEETS

| F.A.P. RTE. | SECTION | COUNTY | TOTAL SHEETS | SHEET NO. |
|---------------------------|---------|---------|--------------|-----------|
| 42 | 1-1BR-2 | CLINTON | 159 | 71 |
| CONTRACT NO. 76479 | | | | |
| ILLINOIS FED. AID PROJECT | | | | |