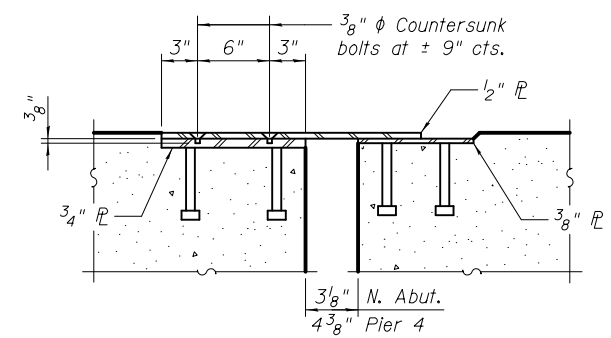


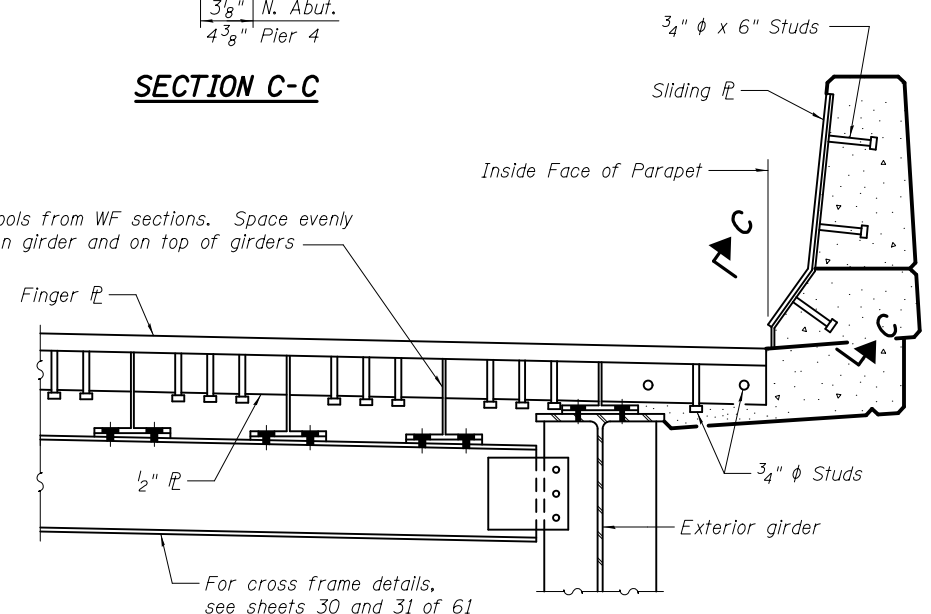
SECTION B-B

* min. slope 5/8" / ft.

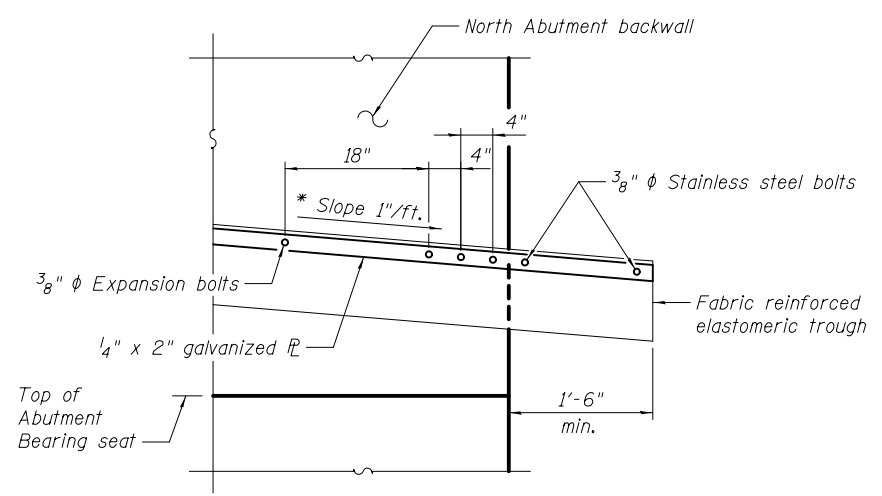


SECTION C-C

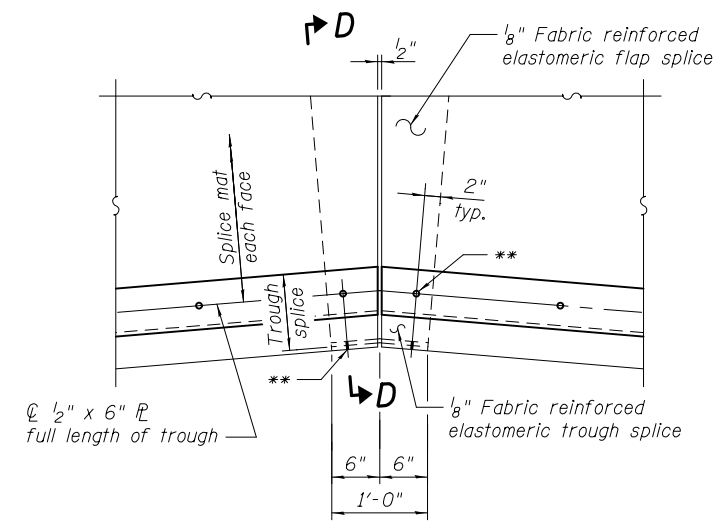
Cut stools from WF sections. Space evenly between girder and on top of girders



SECTION A-A

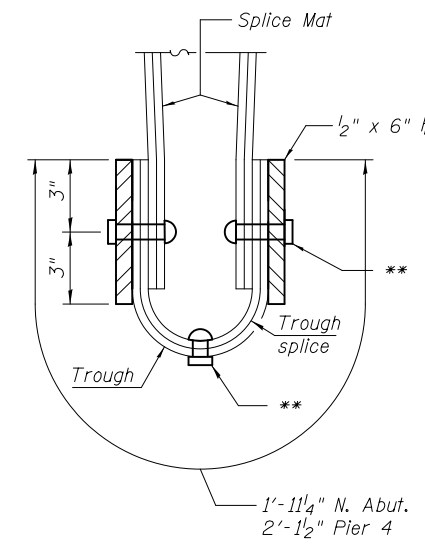


DETAIL B



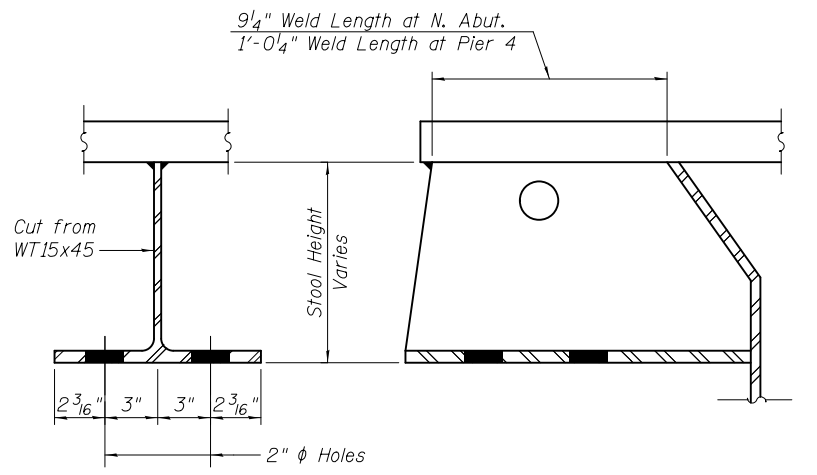
TROUGH SPLICE DETAIL

** 3/8" ϕ Stainless Steel bolts with washers and nuts. Provide brass grommet in trough.



SECTION D-D

Trough splice at Pier 4 shown. Trough splice at N. Abut. similar.



FINGER PLATE STOOL DETAIL

Pier 4 shown, N. Abut. similar

Note:
Fabric reinforced material for trough and side flap shall be according to Section 520 of the Standard Specifications.



| | | |
|----------------------|----------------|---------|
| USER NAME = | DESIGNED - JTH | REVISED |
| | CHECKED - RLM | REVISED |
| PLOT SCALE = | DRAWN - PRC | REVISED |
| PLOT DATE = 2/1/2013 | CHECKED - JTH | REVISED |

STATE OF ILLINOIS
DEPARTMENT OF TRANSPORTATION

FINGER PLATE EXPANSION JOINT - 2
STRUCTURE NO. 014-0033

SHEET NO. 25 OF 61 SHEETS

| | | | | |
|---------------------------|---------|---------|--------------|-----------|
| F.A.P. RTE. | SECTION | COUNTY | TOTAL SHEETS | SHEET NO. |
| 42 | 1-1BR-2 | CLINTON | 159 | 94 |
| CONTRACT NO. 76479 | | | | |
| ILLINOIS FED. AID PROJECT | | | | |