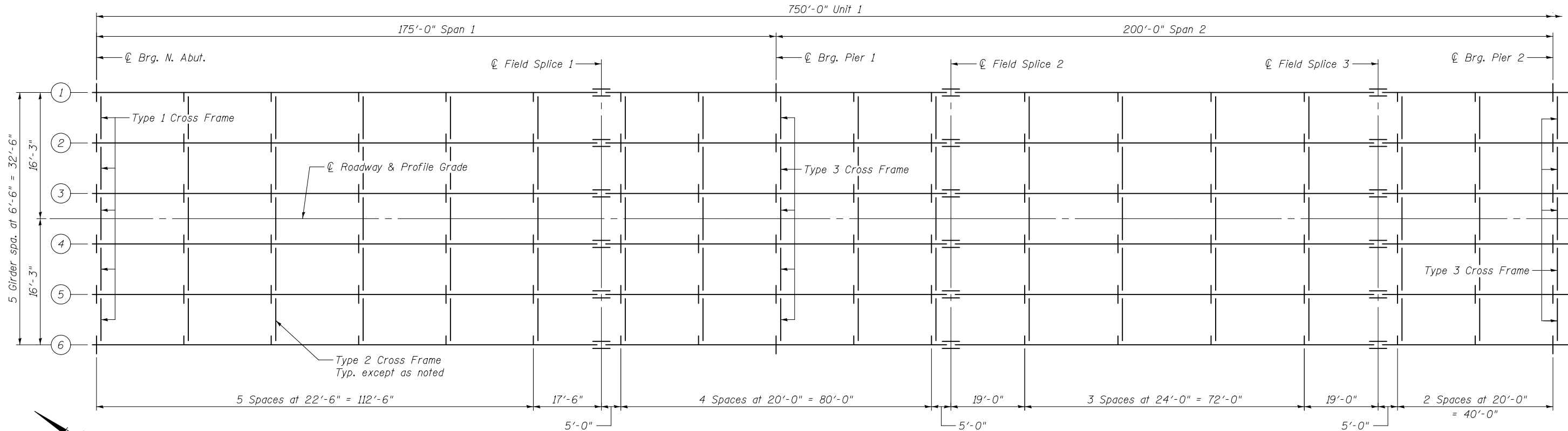
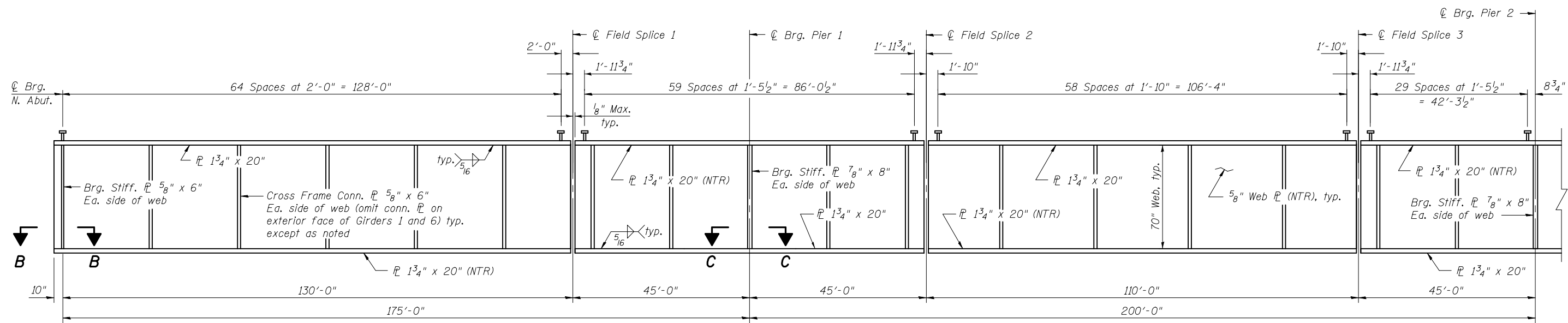


750'-0" Unit 1

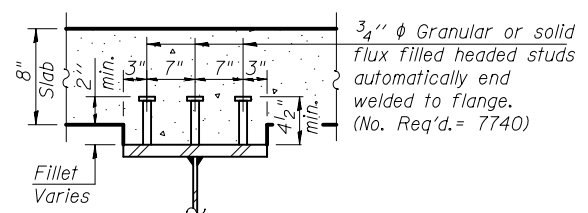


**PART FRAMING PLAN - UNIT 1**

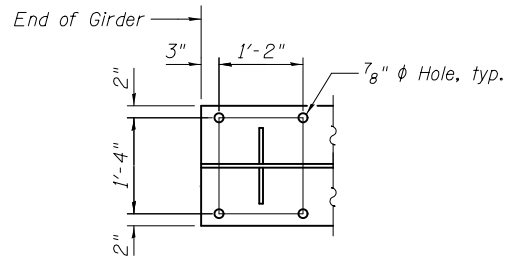


**PART GIRDER ELEVATION - UNIT 1**

Interior girders shown, exterior girders similar. (Looking East, 6 required)

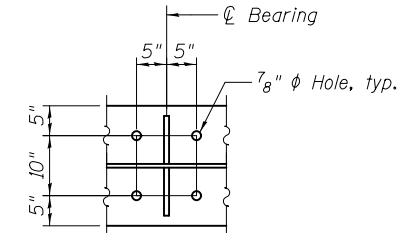


**SECTION A-A**



**SECTION B-B**

Section at North abutment shown, Section at Pier 4 similar



**SECTION C-C**

Notes:  
 Load carrying components designated "NTR" shall conform to the Impact Testing Requirement, Zone 2.  
 All flange plates, web plates, bearing stiffeners, and cross frame connection plates shall be AASHTO M270 Grade 50.  
 See sheets 30, 32 and 33 of 61 for steel details.



USER NAME =	DESIGNED - RLM	REVISIONS
PLOT SCALE =	CHECKED - JTH	REVISIONS
PLOT DATE = 2/1/2013	DRAWN - PRC	REVISIONS
	CHECKED - RLM	REVISIONS

STATE OF ILLINOIS  
 DEPARTMENT OF TRANSPORTATION

STEEL FRAMING PLAN - UNIT 1 (1 OF 2)  
 STRUCTURE NO. 014-0033

SHEET NO. 27 OF 61 SHEETS

F.A.P. RTE.	SECTION	COUNTY	TOTAL SHEETS	SHEET NO.
42	1-1BR-2	CLINTON	159	96
CONTRACT NO. 76479				
ILLINOIS FED. AID PROJECT				