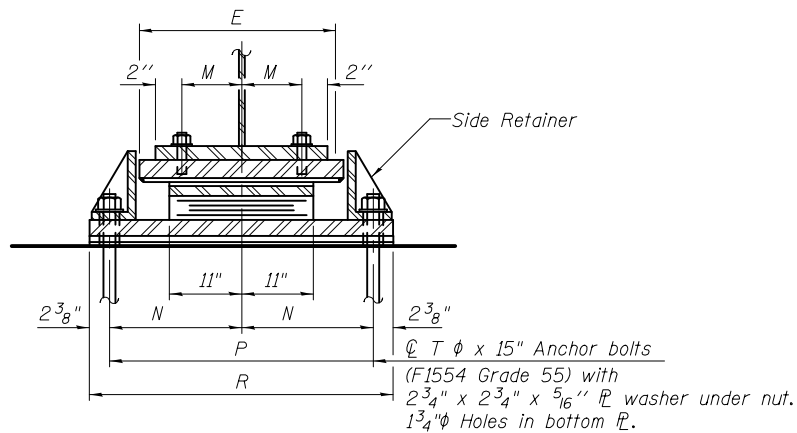
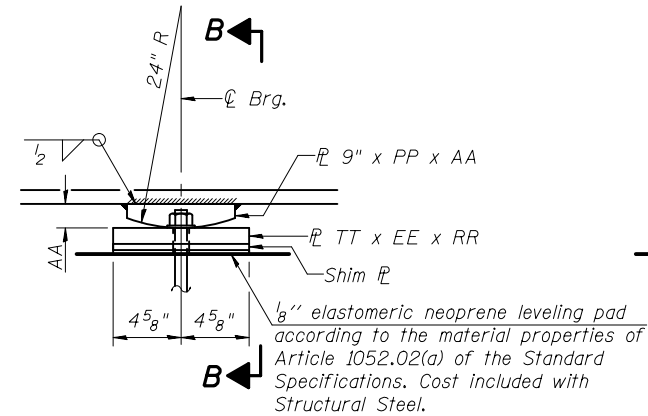


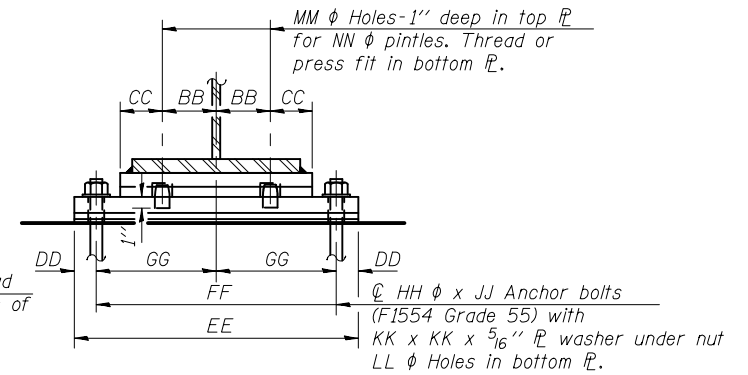
**ELEVATION AT ABUT. AND PIER**



**SECTION A-A**



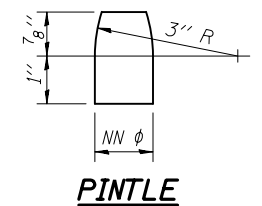
**ELEVATION AT PIER**



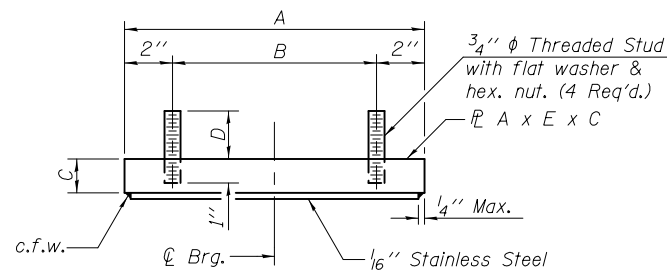
**SECTION B-B**

**TYPE II ELASTOMERIC EXP. BRG.**

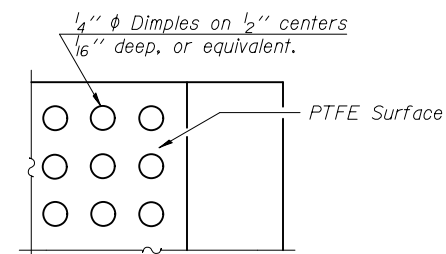
**FIXED BEARING**



**PINTLE**



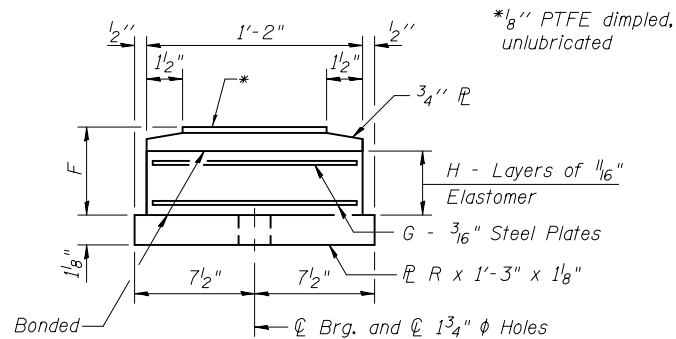
**TOP BEARING ASSEMBLY**



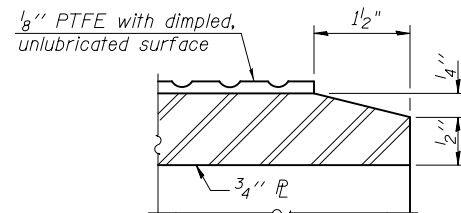
**PLAN-PTFE SURFACE**

**FIXED BEARING ASSEMBLY TABLE**

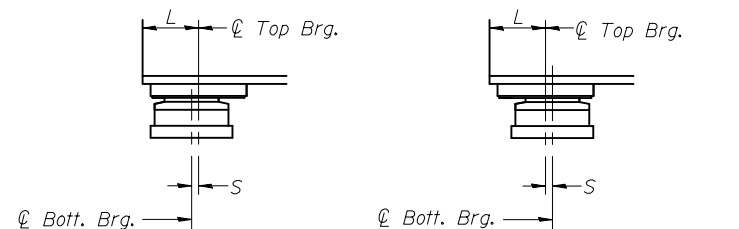
Location	AA	BB	CC	DD	EE	FF	GG	HH	JJ	KK	LL	MM	NN	PP	RR	TT
Unit 1 - Pier 2	2 <sup>9</sup> / <sub>16</sub> "	5"	5 <sup>3</sup> / <sub>4</sub> "	2 <sup>5</sup> / <sub>8</sub> "	2'-3 <sup>3</sup> / <sub>8</sub> "	2'-0 <sup>1</sup> / <sub>2</sub> "	1'-0 <sup>1</sup> / <sub>4</sub> "	1 <sup>1</sup> / <sub>4</sub> "	18"	3"	1 <sup>3</sup> / <sub>4</sub> "	1 <sup>5</sup> / <sub>8</sub> "	1 <sup>1</sup> / <sub>4</sub> "	1'-9 <sup>1</sup> / <sub>2</sub> "	1 <sup>7</sup> / <sub>8</sub> "	9 <sup>1</sup> / <sub>4</sub> "
Unit 2 - Pier 5	3 <sup>1</sup> / <sub>4</sub> "	6"	6 <sup>3</sup> / <sub>4</sub> "	3 <sup>1</sup> / <sub>2</sub> "	2'-9"	2'-5 <sup>1</sup> / <sub>2</sub> "	1'-2 <sup>3</sup> / <sub>4</sub> "	1 <sup>1</sup> / <sub>2</sub> "	24"	3 <sup>1</sup> / <sub>2</sub> "	2"	1 <sup>1</sup> / <sub>2</sub> "	1 <sup>3</sup> / <sub>8</sub> "	2'-1 <sup>1</sup> / <sub>2</sub> "	2"	10"



**BOTTOM BEARING ASSEMBLY**

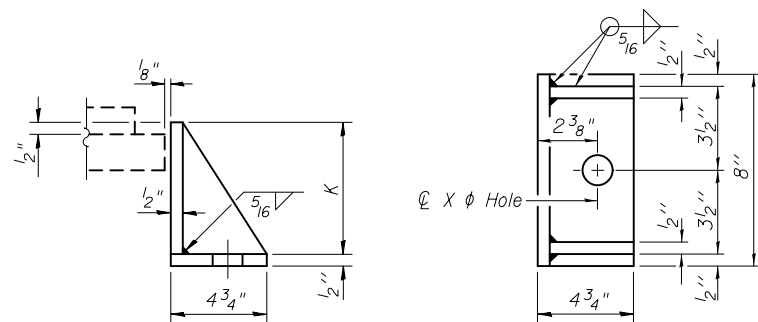


**SECTION THRU PTFE**



**SETTING ANCHOR BOLTS AT ELASTOMERIC EXP. BRG.**  
 (Move bott. brg. away from fixed brg.) (Move bott. brg. toward fixed brg.)

**Notes:**  
 Anchor bolts shall be ASTM F1554 all-thread (or an Engineer-approved alternate material) of the grade(s) and diameter(s) specified. The corresponding specified grade of AASHTO M314 anchor bolts may be used in lieu of ASTM F1554.  
 Anchor bolts at fixed bearings may be either cast in place or installed in holes drilled after the supported member is in place.  
 Anchor bolts for Type II bearings shall be placed in holes drilled in the concrete through holes in the bottom bearing plate after members are in place. Side retainers shall be placed after bolts are installed.  
 Drilled and set anchor bolts shall be installed according to Article 521.06 of the Standard Specifications.  
 Side retainers and other steel members required for the elastomeric bearing assembly shall be included in the cost of Elastomeric Bearing Assembly, Type II.  
 The 1/8" PTFE sheet shall be bonded directly to the top steel plate with a two-component, medium viscosity epoxy resin, conforming to the requirements of the Federal Specification MMM-A-134, Type I. The bond agent shall be applied on the full area of the contact surfaces.  
 Bonding of 1/8" PTFE sheet during vulcanizing process will be permitted provided the process and method of adjusting assembly height is approved by the Engineer.  
 The structural steel plates of the Bearing Assemblies and Pintles shall conform to the requirements of AASHTO M270 Grade 50.  
 Two 1/8 in. adjusting shims shall be provided for each bearing in addition to all other plates or shims and placed as shown on bearing details.  
 The anchor bolt sizes and grades shown constitute a calculated seismic structural fuse. Substitution of higher diameter and/or grade anchor bolts will not be allowed.



**SIDE RETAINER**

Equivalent rolled angle with stiffeners will be allowed in lieu of welded plates.

**ELASTOMERIC BEARING ASSEMBLY TABLE**

Location	Top Bearing Assembly					Bottom Bearing Assembly				Miscellaneous						
	A	B	C	D	E	F	G	H	K	L	M	N	P	R	T	X
Unit 1 - N. Abut. & Pier 4	1'-6"	1'-2"	2 <sup>1</sup> / <sub>4</sub> "	3 <sup>1</sup> / <sub>4</sub> "	1'-8"	6 <sup>13</sup> / <sub>16</sub> "	6	7	9 <sup>9</sup> / <sub>16</sub> "	10"	8"	1'-0 <sup>1</sup> / <sub>2</sub> "	2'-1"	2'-5 <sup>3</sup> / <sub>4</sub> "	1"	1 <sup>1</sup> / <sub>2</sub> "
Unit 2 - Pier 4	1'-4"	1'-0"	2 <sup>9</sup> / <sub>16</sub> "	3 <sup>1</sup> / <sub>2</sub> "	2'-0"	5 <sup>9</sup> / <sub>16</sub> "	5	6	9"	9"	10"	1'-2 <sup>1</sup> / <sub>2</sub> "	2'-5"	2'-9 <sup>3</sup> / <sub>4</sub> "	1 <sup>1</sup> / <sub>4</sub> "	1 <sup>3</sup> / <sub>4</sub> "
Unit 2 - S. Abut.	1'-4"	1'-0"	2 <sup>9</sup> / <sub>16</sub> "	3 <sup>1</sup> / <sub>2</sub> "	2'-0"	4 <sup>3</sup> / <sub>16</sub> "	3	4	7 <sup>1</sup> / <sub>4</sub> "	9"	10"	1'-2 <sup>1</sup> / <sub>2</sub> "	2'-5"	2'-9 <sup>3</sup> / <sub>4</sub> "	1 <sup>1</sup> / <sub>4</sub> "	1 <sup>3</sup> / <sub>4</sub> "

**BILL OF MATERIAL**

Item	Unit	Total
Elastomeric Bearing Assembly Type II	Each	24
Anchor Bolts, 1"	Each	24
Anchor Bolts, 1 <sup>1</sup> / <sub>4</sub> "	Each	36
Anchor Bolts, 1 <sup>1</sup> / <sub>2</sub> "	Each	12



USER NAME =	DESIGNED - JTH	REVISED
	CHECKED - MJP	REVISED
PLOT SCALE =	DRAWN - PRC	REVISED
PLOT DATE = 2/1/2013	CHECKED - JTH	REVISED

**STATE OF ILLINOIS  
DEPARTMENT OF TRANSPORTATION**

**BEARING DETAILS  
STRUCTURE NO. 014-0033**

SHEET NO. 35 OF 61 SHEETS

F.A.P. RTE.	SECTION	COUNTY	TOTAL SHEETS	SHEET NO.
42	1-1BR-2	CLINTON	159	104
CONTRACT NO. 76479				
ILLINOIS FED. AID PROJECT				