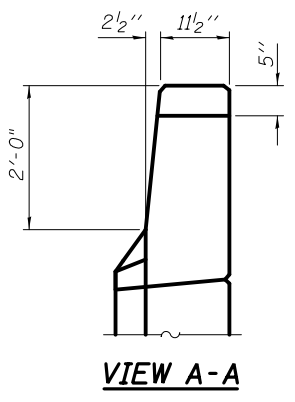
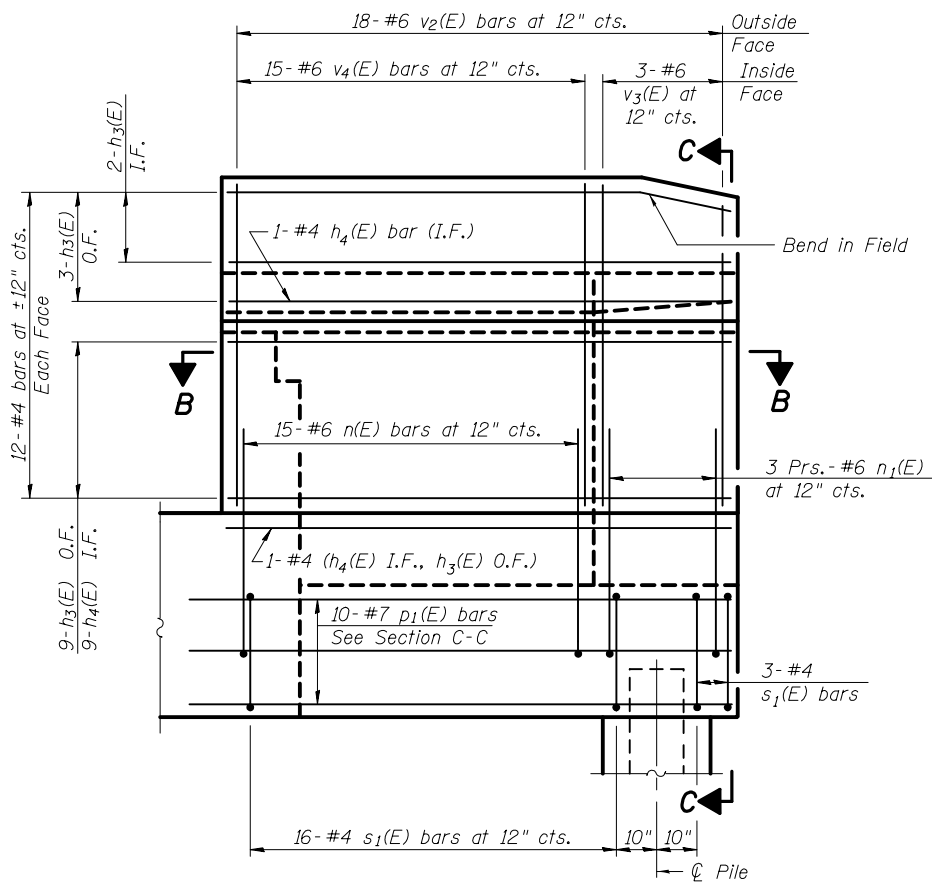


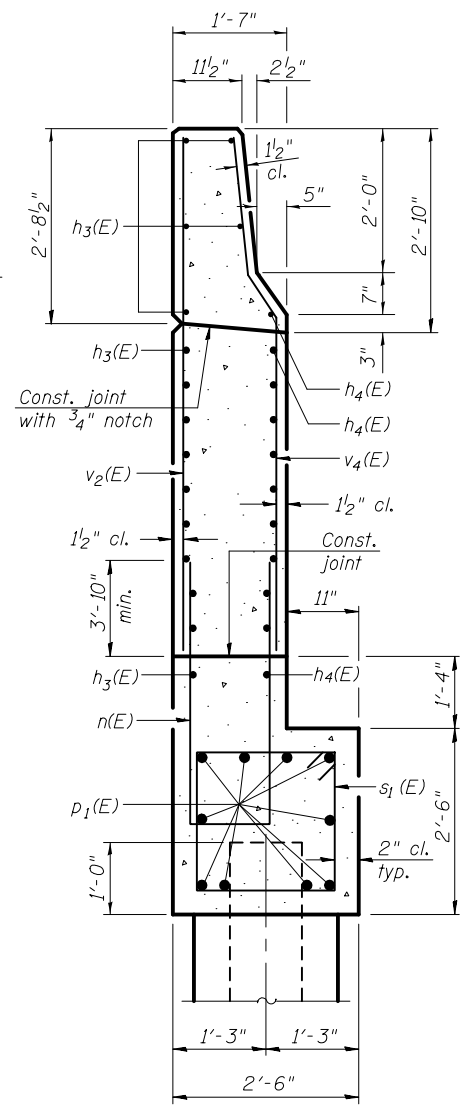
**WING WALL ELEVATION**  
Showing Dimensions



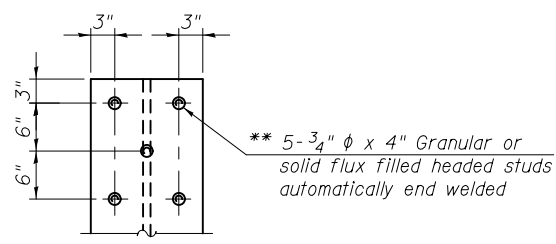
**VIEW A-A**



**WING WALL ELEVATION**  
Showing Reinforcement

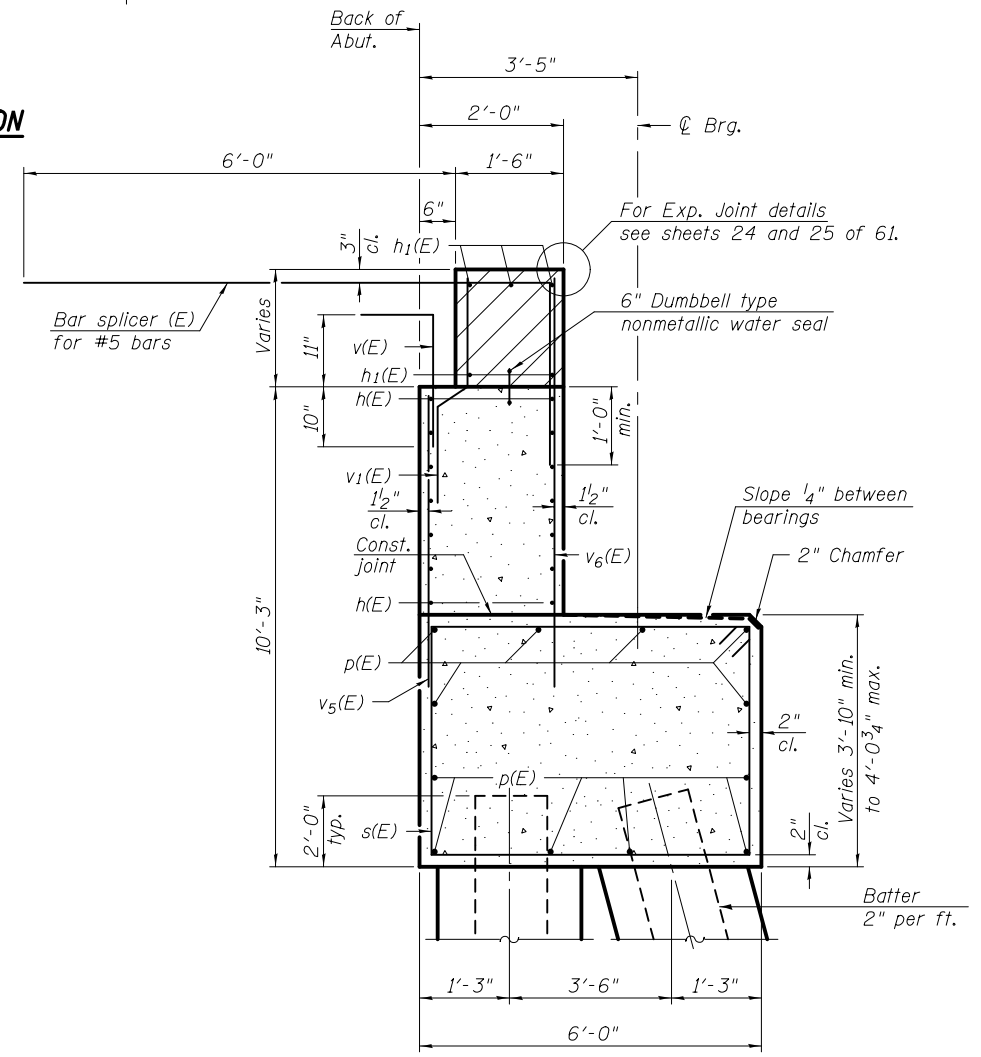


**SECTION C-C**

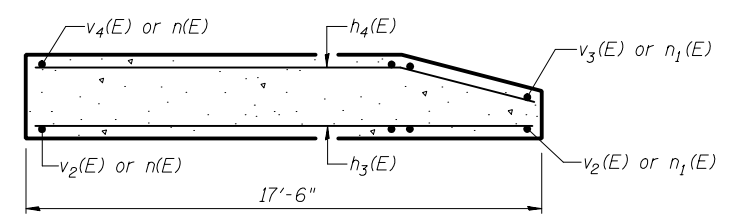


**PILE ANCHORAGE**

\*\* Typical each flange, each abutment pile.  
Not required at wingwall piles.  
Cost included with Furnishing Piles.



**SECTION THRU ABUTMENT**



**SECTION B-B**

Notes:  
Hatched area to be poured after superstructure false work has been removed. Quantity of concrete included with Concrete Superstructure on sheet 21 of 61.  
Space reinforcement in cap to miss anchor bolts.  
Pour steps monolithically with cap.  
Quantity of concrete in end post included with Concrete Superstructure on sheet 21 of 61.  
For Concrete Encasement details, see sheet 46 of 61.



USER NAME =	DESIGNED - JTH	REVISED
	CHECKED - RLM	REVISED
PLOT SCALE =	DRAWN - PRC	REVISED
PLOT DATE = 2/1/2013	CHECKED - JTH	REVISED

STATE OF ILLINOIS  
DEPARTMENT OF TRANSPORTATION

NORTH ABUTMENT DETAILS  
STRUCTURE NO. 014-0033

SHEET NO. 38 OF 61 SHEETS

F.A.P. RTE.	SECTION	COUNTY	TOTAL SHEETS	SHEET NO.
42	1-1BR-2	CLINTON	159	107
CONTRACT NO. 76479				

ILLINOIS FED. AID PROJECT