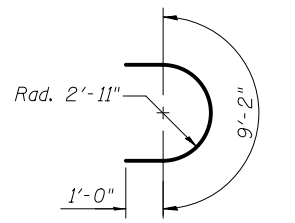
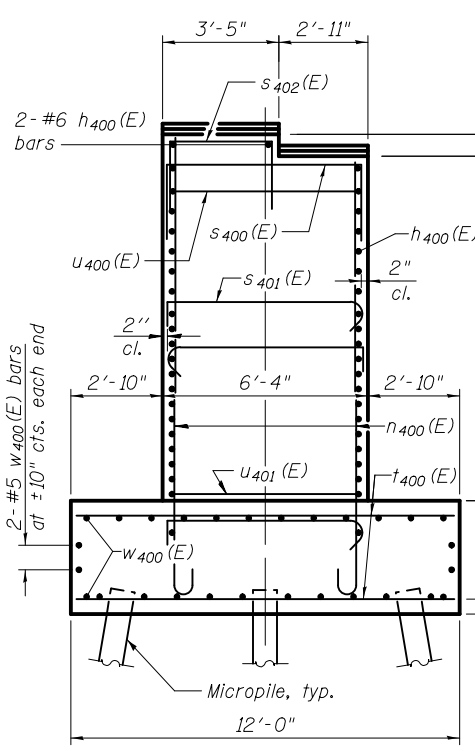


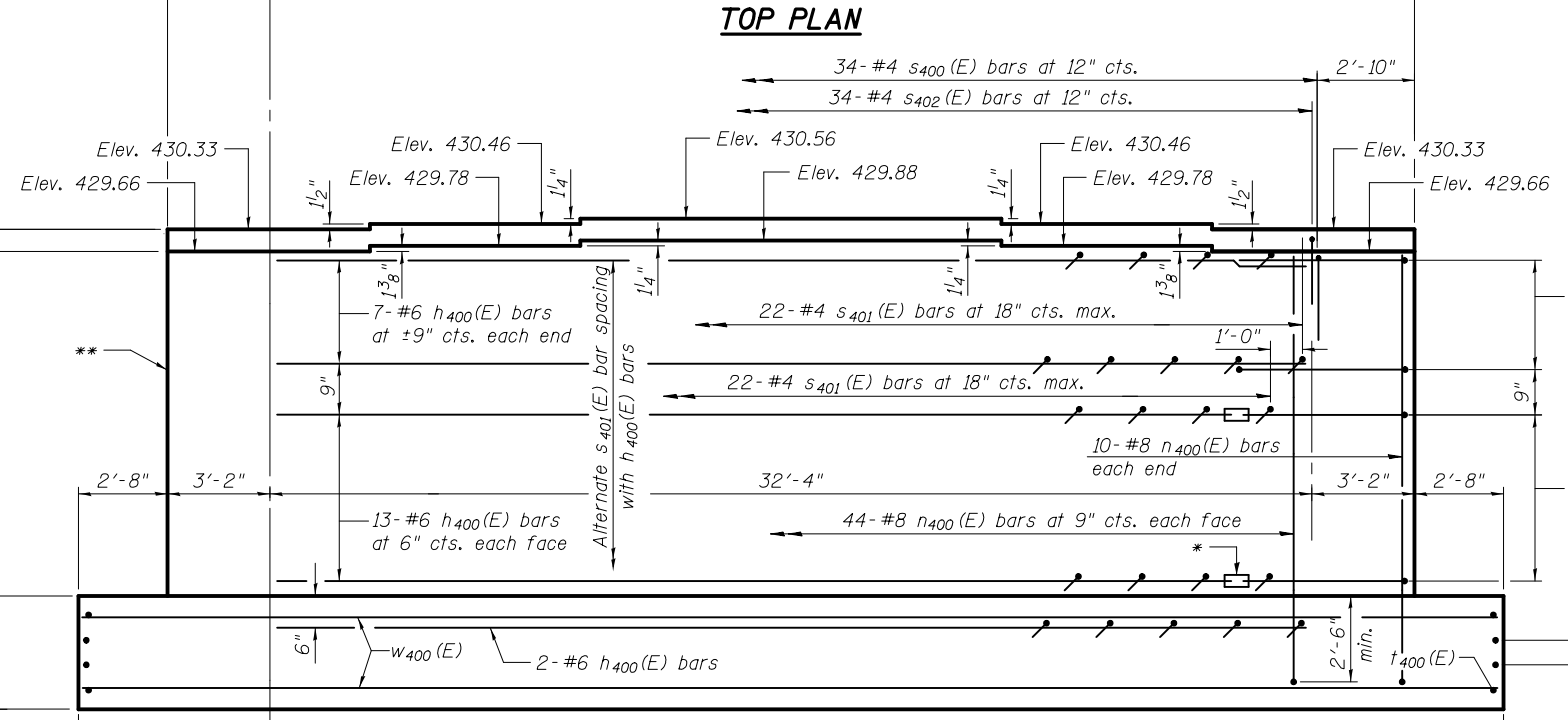
**BAR u400(E)**



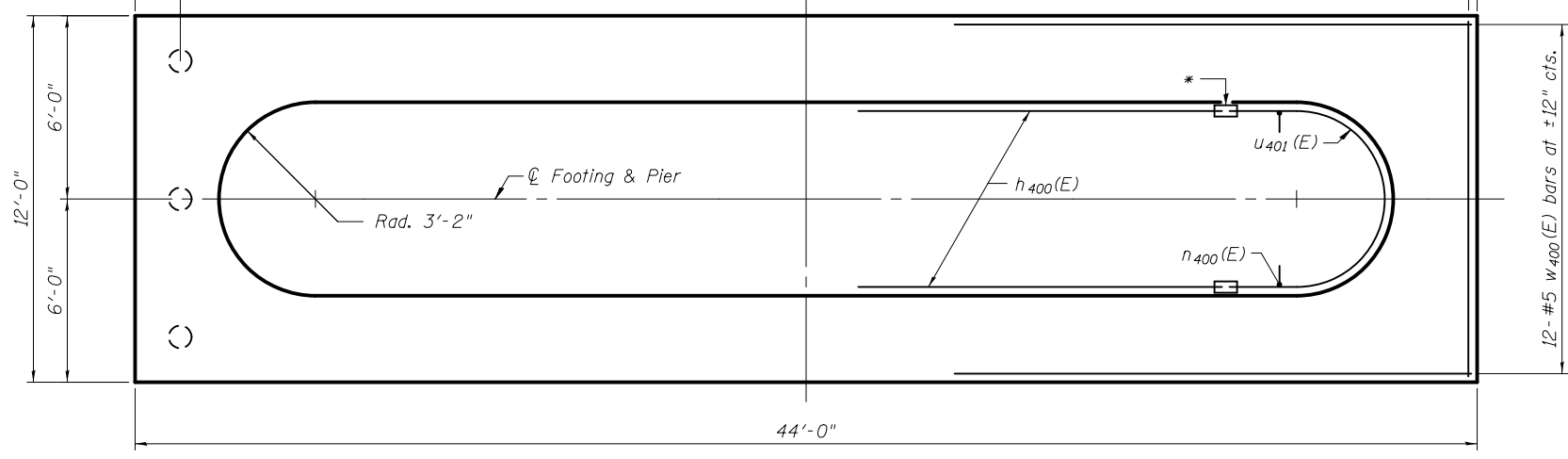
**BAR u401(E)**



**END VIEW**  
(Looking East)



**ELEVATION**  
(Looking North)



**FOOTING PLAN**

**PILE DATA**  
Type: 9<sup>5</sup>/<sub>8</sub>" Micropile  
For details of micropiles and tension micropiles, see sheets 47, 48 and 49 of 61.

**PIER 4  
BILL OF MATERIAL**

Bar	No.	Size	Length	Shape
h <sub>400</sub> (E)	44	#6	30'-4"	—
n <sub>400</sub> (E)	108	#8	14'-8"	⌋
s <sub>400</sub> (E)	34	#4	11'-10"	⌋
s <sub>401</sub> (E)	462	#4	7'-1"	⌋
s <sub>402</sub> (E)	34	#4	8'-11"	⌋
t <sub>400</sub> (E)	116	#6	11'-6"	—
u <sub>400</sub> (E)	14	#6	15'-10"	⌋
u <sub>401</sub> (E)	26	#6	11'-2"	⌋
w <sub>400</sub> (E)	28	#5	43'-6"	—
Structure Excavation		Cu. Yd.	143	
Concrete Structures		Cu. Yd.	163.4	
Reinforcement Bars, Epoxy Coated		Pound	12,940	
Mechanical Splicers		Each	52	
Concrete Sealer		Sq. Ft.	1134	

\* Mechanical splice h<sub>400</sub>(E) bars to u<sub>401</sub>(E) bars

Notes:  
Space reinforcement in cap to miss anchor bolts.  
Pour steps monolithically with cap.  
See sheet 35 of 61 for anchor bolt layout and spacing.  
\*\* See Heat of Hydration Control for Concrete Structures special provision for pier wall concrete pour requirements.



USER NAME =	DESIGNED - MJP	REVISED
	CHECKED - ACK	REVISED
PLOT SCALE =	DRAWN - PRC	REVISED
PLOT DATE = 2/1/2013	CHECKED - MJP	REVISED

STATE OF ILLINOIS  
DEPARTMENT OF TRANSPORTATION

PIER 4  
STRUCTURE NO. 014-0033

SHEET NO. 44 OF 61 SHEETS

F.A.P. RTE.	SECTION	COUNTY	TOTAL SHEETS	SHEET NO.
42	1-1BR-2	CLINTON	159	113
CONTRACT NO. 76479				
ILLINOIS FED. AID PROJECT				