

PROPOSED PARTIAL PLAN

* Cut bars in field to fit skew.
 ** Bend bars in field to fit skew.

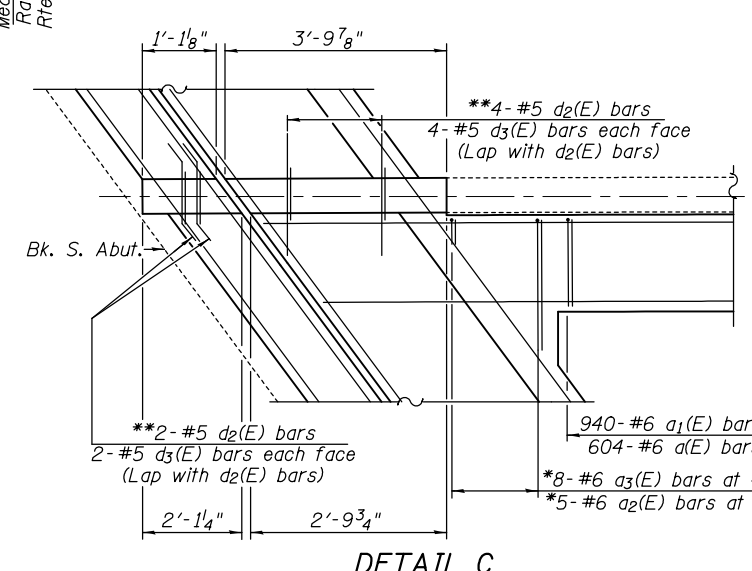
MIN. BAR LAP

#5 = 3'-3"
 #6 = 3'-10"

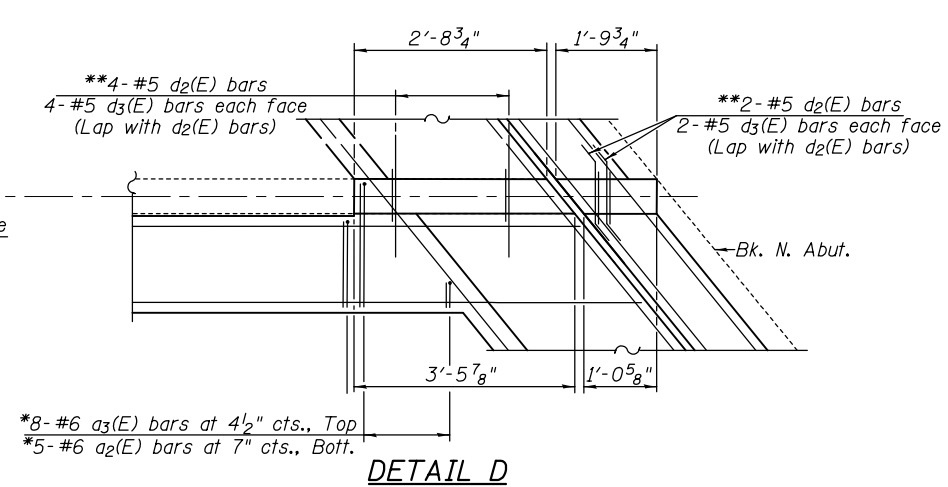
NOTES

Bars indicated thus 2x2-#6 etc. indicates 2 lines of bars with 2 lengths per line.
 See Sheet 15 of 22 for Section Views
 Dimensions are based on a Rolled Railed Strip Seal Joint.
 If the Contractor elects to use the Welded Strip Seal Joint, deck dimensions may require adjustments. See sheet 18 of 22 for details.

**SOUTH BOUND LANES -
 SUPERSTRUCTURE DETAILS
 S.N. 082-0241 (NB) & S.N. 082-0242 (SB)**



DETAIL C



DETAIL D

FILE NAME =	USER NAME =	DESIGNED -	REVISD -	Allen Henderson & Associates, Inc. Civil and Structural Engineers Springfield, IL 62703 Phone: (217)544-8033 IL Design Firm No. 184-001907	SOUTH BOUND LANES - SUPERSTRUCTURE DETAILS SHEET NO. 14 OF 22 SHEETS	F.A.I. RTE.	SECTION	COUNTY	TOTAL SHEETS	SHEET NO.
PLOT SCALE =	CHECKED -	REVISD -	255			82-2HB-2-1	ST. CLAIR	54	46	
PLOT DATE =	DRAWN -	REVISD -	CONTRACT NO. 10521							
	CHECKED -	REVISD -	ILLINOIS FED. AID PROJECT							