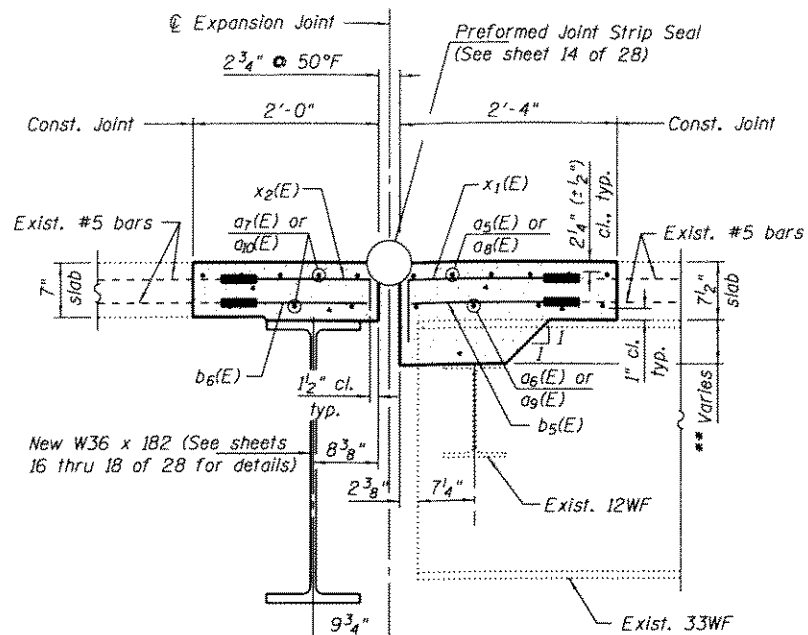
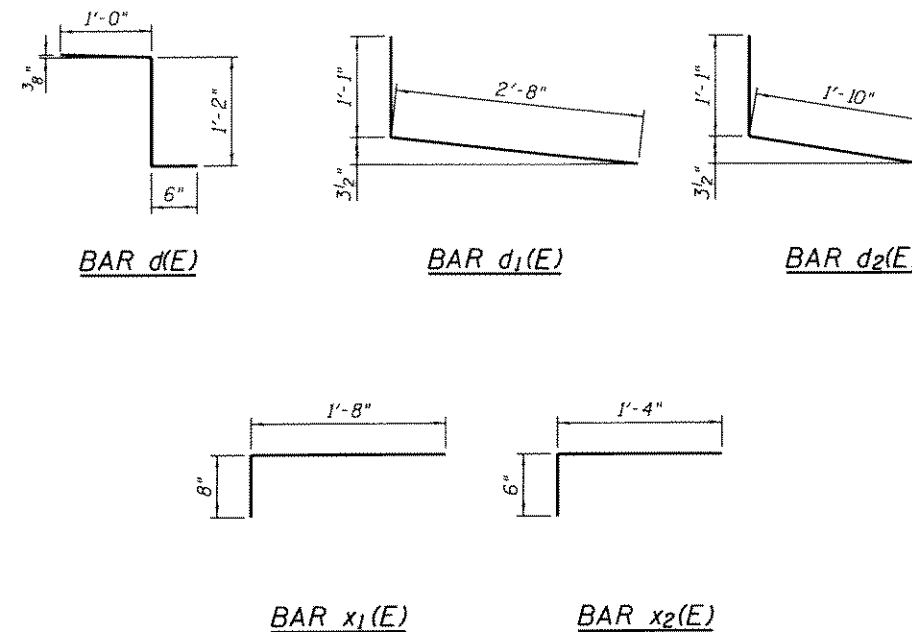


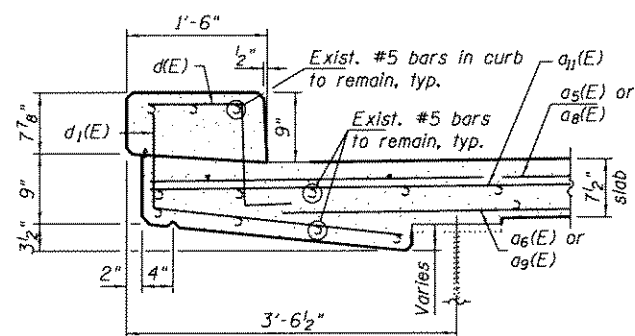
SECTION A-A
(Showing Removal)



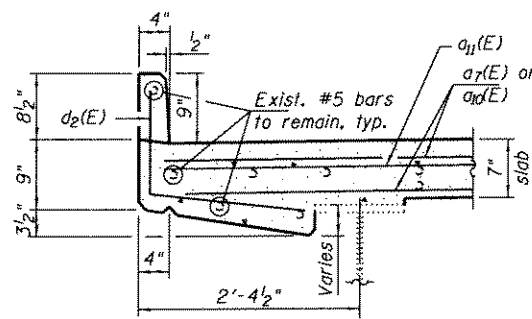
SECTION B-B
(Showing Replacement)



** Depth of Corbel to be reconstructed, 6 1/2" max. at Bridge Crown and varies.



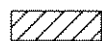
SECTION C-C



SECTION D-D

Note:
Work this sheet with sheet 11 of 28.

LEGEND



Full depth concrete and reinforcement removal.



Full depth concrete removal. 6" of the existing longitudinal reinforcement shall be cleaned and incorporated into the new construction with mechanical splicers, unless otherwise noted.

**PIER 4
BILL OF MATERIAL**

Bar	No.	Size	Length	Shape
a5(E)	6	#5	14'-10"	—
a6(E)	4	#5	14'-1"	—
a7(E)	9	#5	13'-10"	—
a8(E)	6	#5	18'-6"	—
a9(E)	4	#5	17'-9"	—
a10(E)	9	#5	17'-6"	—
a11(E)	10	#6	6'-6"	—
b5(E)	30	#5	1'-8"	—
b6(E)	34	#5	1'-4"	—
d(E)	6	#5	2'-8"	┌
d1(E)	6	#5	3'-9"	┌
d2(E)	6	#5	2'-11"	┌
x1(E)	30	#5	2'-4"	┌
x2(E)	32	#5	1'-10"	┌
Concrete Removal			Cu. Yd.	4.4
Concrete Superstructure			Cu. Yd.	4.4
Protective Coat			Sq. Yd.	16.1
Reinforcement Bars, Epoxy Coated			Pound	1,030
Bar Splicers			Each	19
Mechanical Splicers			Each	128

design firm
no. 184001036



USER NAME = OPERATOR
FILE NAME = 0820077-08080.dgn
PLOT SCALE = 8:2 1/2" = 1"
PLOT DATE = 11/14/2012

DESIGNED - FLL/SBC
CHECKED - CWC/SBC
DRAWN - FLL/DLH
CHECKED - CWC

REVISED
REVISED
REVISED
REVISED

STATE OF ILLINOIS
DEPARTMENT OF TRANSPORTATION

PIER 4 JOINT REPLACEMENT DETAILS
STRUCTURE NO. 082-0077

SHEET NO. 12 OF 28 SHEETS

F.A.P. RTE.	SECTION	COUNTY	TOTAL SHEETS	SHEET NO.
817	421 BR-1	ST. CLAIR	43	27
			CONTRACT NO. 76P75	
ILLINOIS FED. AID PROJECT				