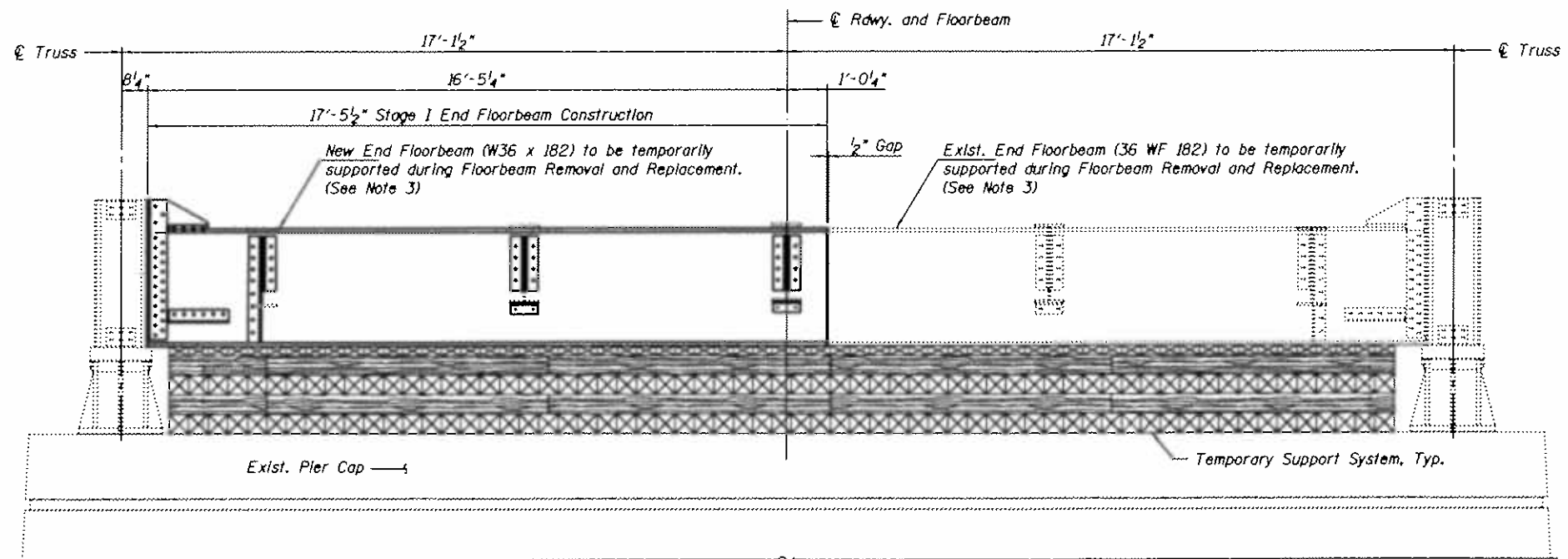
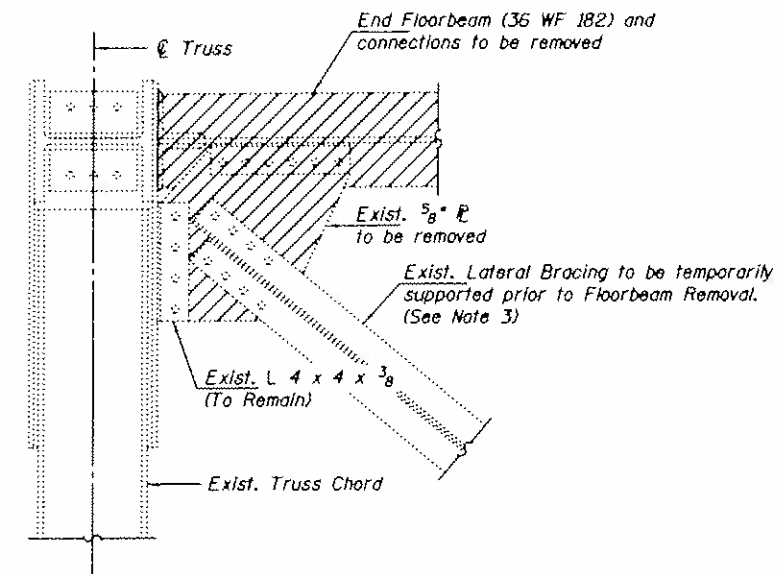


**STAGE I END FLOORBEAM REMOVAL**  
(Looking East)



**STAGE I END FLOORBEAM CONSTRUCTION**  
(Looking East)



**SECTION A-A**  
(Showing Structural Steel Removal)  
(North end shown South end similar)

**STRINGER REACTION TABLE**

	Exterior	Interior
R <sub>DL</sub>	9.3 <sup>K</sup>	10.5 <sup>K</sup>
R <sub>LL</sub>	26.9 <sup>K</sup>	36.9 <sup>K</sup>
R <sub>LI</sub>	8.1 <sup>K</sup>	11.0 <sup>K</sup>
R <sub>TOTAL</sub>	44.3 <sup>K</sup>	58.4 <sup>K</sup>

(Reactions are unfactored)

**LEGEND**

Structural Steel Removal

**Notes:**

1. East End Floorbeam shown. West End Floor Beam similar by 180 degree rotation.
2. Hatch area indicates Structural Steel Removal. Removal of End Floorbeams, Connection Angles and Plates, Lateral Bracing, Horizontal Gusset Plates, and all Bolts and Rivets are included in the cost of Structural Steel Repair. See Special Provisions.
3. Stringers, End Floorbeam, and Lateral Bracing shall be temporarily supported during removal and replacement. Cost included with Temporary Support System. See Special Provisions.
4. See sheets 18 of 28 for Structural Steel Details and Bill of Material.
5. See sheet 2 of 28 for Stage Construction Scheme.
6. Work this sheet with sheets 17 and 18 of 28.