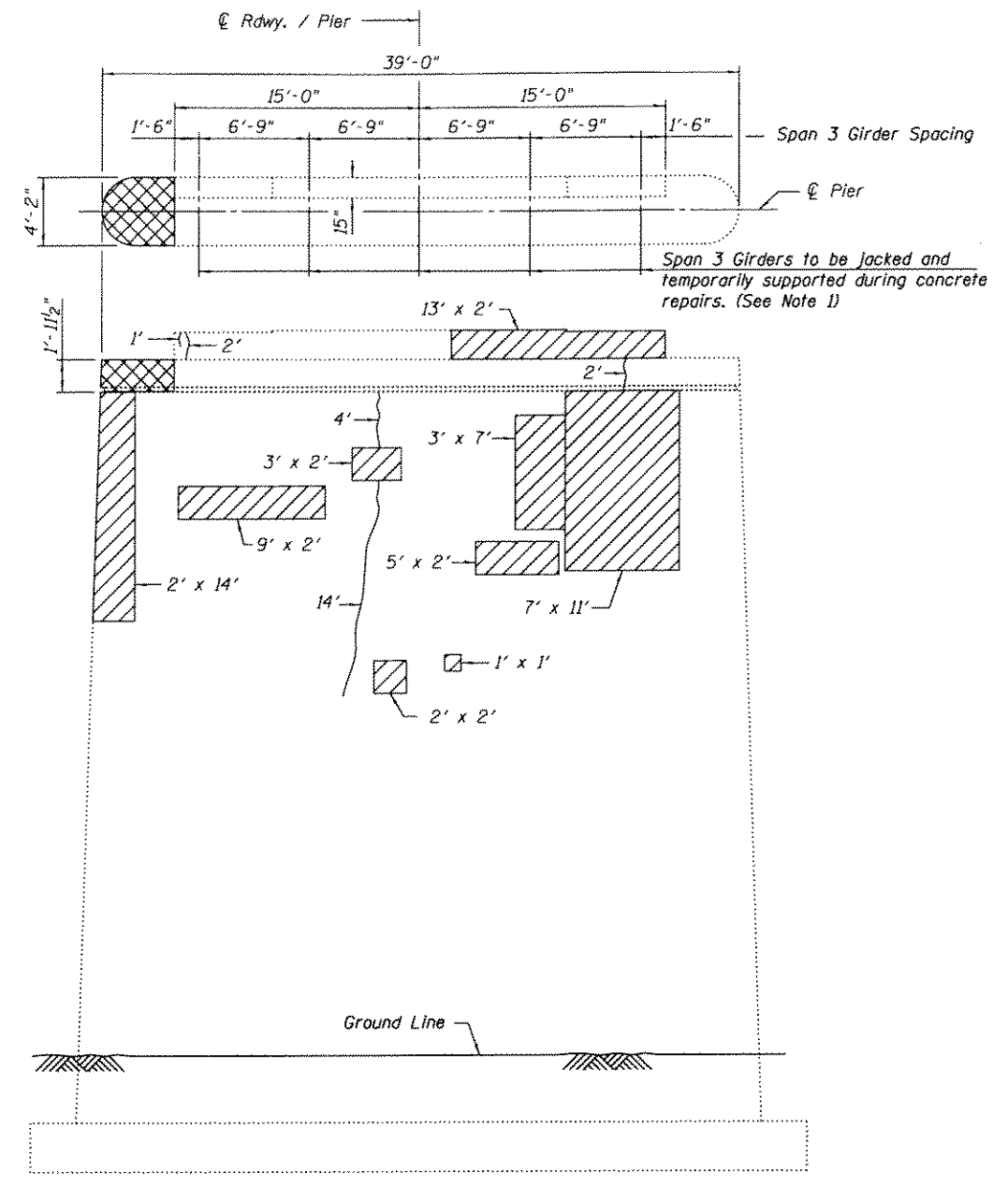


NORTH END VIEW

WEST FACE ELEVATION

SOUTH END VIEW



EAST FACE ELEVATION

SPAN 3 GIRDER REACTION TABLE

	Exterior	Interior
R _{DL}	28.4 ^K	28.4 ^K
R _{LL}	34.2 ^K	46.9 ^K
R _I	9.0 ^K	12.3 ^K
R _{TOTAL}	71.6 ^K	87.6 ^K

(Reactions are unfactored)

LEGEND

- Concrete Removal and Replacement, (Jacking and temporary support of the Truss shall be completed before commencing Concrete Removal Operations. See sheets 21 and 22 of 28 for details.)
- Structural Repair of Concrete (Depth greater than five inches)
- Epoxy Crack Injection

Notes:

1. Jacking and cribbing of the Span 3 Girder ends and concrete repairs to the upper pier pedestal and/or pier stem shall not occur simultaneously with the removal and reinstallation of the existing truss bearings.
2. Crack widths shown to be repaired are $\frac{1}{8}$ " \pm $\frac{1}{16}$ " unless otherwise noted.
3. For Pier Cap Details and Bill of Material, see sheet 21 of 28.
4. Work this sheet with sheet 20 and 21 of 28.

Design firm
no. 184001036



USER NAME = OPERATOR
FILE NAME = 0820877-08208.dgn
PLOT SCALE = 0.2" = 1'-0"
PLOT DATE = 11/14/2012

DESIGNED - FLL/SBC
CHECKED - CWC/SBC
DRAWN - FLL/DLH
CHECKED - CWC

REVISED
REVISED
REVISED
REVISED

STATE OF ILLINOIS
DEPARTMENT OF TRANSPORTATION

PIER 3 REPAIR DETAILS
STRUCTURE NO. 082-0077

SHEET NO. 19 OF 28 SHEETS

F.A.P. RTE.	SECTION	COUNTY	TOTAL SHEETS	SHEET NO.
817	421 BR -1	ST. CLAIR	43	34
CONTRACT NO.			76F75	
ILLINOIS FED. AID PROJECT				