

**STANDARD BAR SPLICER ASSEMBLY**

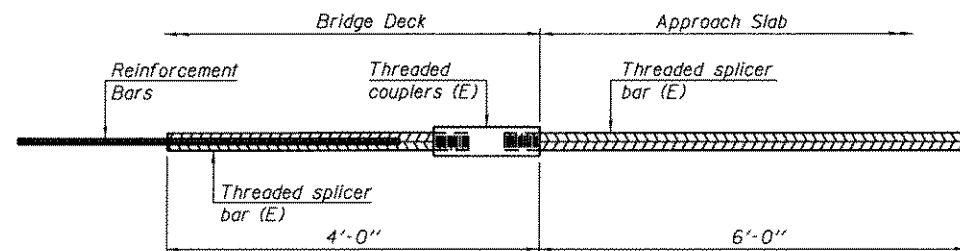
Bar size to be spliced	Minimum Lap Lengths					
	Table 1	Table 2	Table 3	Table 4	Table 5	Table 6
3, 4	1'-5"	1'-11"	2'-1"	2'-4"	2'-7"	2'-11"
5	1'-9"	2'-5"	2'-7"	2'-11"	3'-3"	3'-8"
6	2'-1"	2'-11"	3'-1"	3'-6"	3'-10"	4'-5"
7	2'-9"	3'-10"	4'-2"	4'-8"	5'-2"	5'-10"
8	3'-8"	5'-1"	5'-5"	6'-2"	6'-9"	7'-8"
9	4'-7"	6'-5"	6'-10"	7'-9"	8'-7"	9'-8"

- Table 1: Black bar, 0.8 Class C
- Table 2: Black bar, Top bar lap, 0.8 Class C
- Table 3: Epoxy bar, 0.8 Class C
- Table 4: Epoxy bar, Top bar lap, 0.8 Class C
- Table 5: Epoxy bar, Class C
- Table 6: Epoxy bar, Top bar lap, Class C

Threaded splicer bar length = min. lap length + 1/2" + thread length

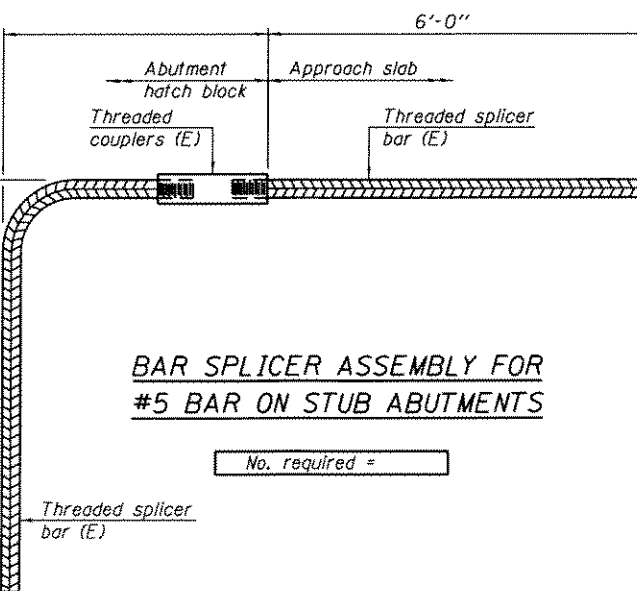
\* Epoxy not required on Bar Splicer Assembly components used in conjunction with black bars.

Location	Bar size	No. assemblies required	Table for minimum lap length
Expansion Joint (W. Abut.)	4	3	4
Expansion Joint (W. Abut.)	5	15	3
Expansion Joint (E. Abut.)	4	3	4
Expansion Joint (E. Abut.)	5	15	3
Expansion Joint (Pier 3)	5	19	3
Expansion Joint (Pier 4)	5	19	3
Expansion Joint (Pier 8)	5	20	3



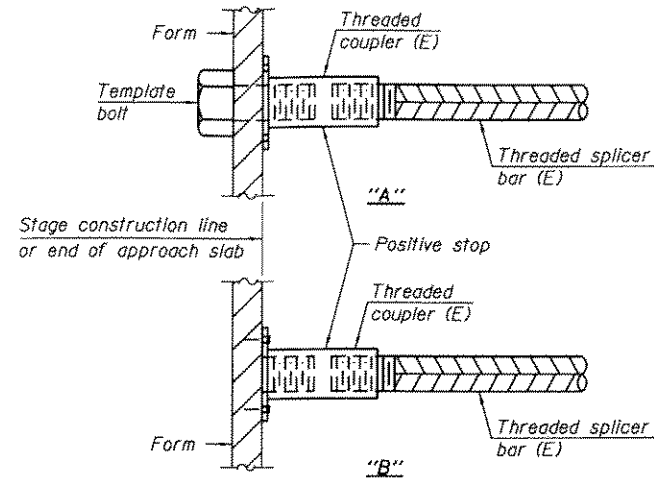
**BAR SPLICER ASSEMBLY FOR #5 BAR ON INTEGRAL OR SEMI-INTEGRAL ABUTMENTS**

No. required =



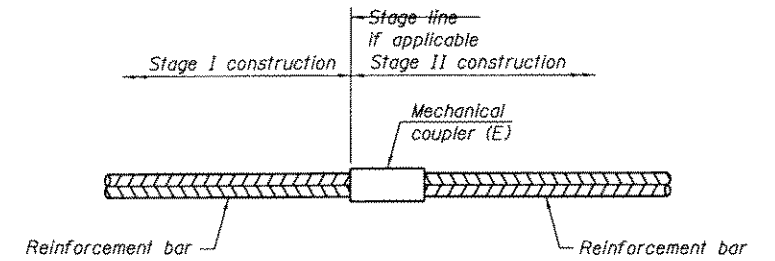
**BAR SPLICER ASSEMBLY FOR #5 BAR ON STUB ABUTMENTS**

No. required =



**INSTALLATION AND SETTING METHODS**

- "A": Set bar splicer assembly by means of a template bolt.
- "B": Set bar splicer assembly by nailing to wood forms or cementing to steel forms.
- (E): Indicates epoxy coating.



**STANDARD MECHANICAL SPLICER**

Location	Bar size	No. assemblies required
Expansion Joint (W. Abut.)	4	36
Expansion Joint (W. Abut.)	5	60
Expansion Joint (W. Abut.)	7	54
Expansion Joint (E. Abut.)	4	36
Expansion Joint (E. Abut.)	5	60
Expansion Joint (E. Abut.)	7	54
Expansion Joint (Pier 3)	5	128
Expansion Joint (Pier 4)	5	128
Expansion Joint (Pier 8)	5	120

**NOTES**

- Splicer bars shall be deformed with threaded ends and have a minimum 60 ksi yield strength.
- All reinforcement shall be lapped and tied to the splicer bars.
- Bar splicer assemblies shall be epoxy coated according to the requirements for reinforcement bars. See Section 508 of the Standard Specifications.
- See approved list of bar splicer assemblies and mechanical splicers for alternatives.

BSD-1

1-27-12



USER NAME = OPERATOR	DESIGNED - FLL/SBC	REVISED
FILE NAME = 0820077-00000.dgn	CHECKED - CWC/SBC	REVISED
PLOT SCALE = 0.2" = 1'-0"	DRAWN - FLL/DLH	REVISED
PLOT DATE = 11/14/2012	CHECKED - CWC	REVISED

STATE OF ILLINOIS  
DEPARTMENT OF TRANSPORTATION

BAR SPLICER ASSEMBLY AND MECHANICAL SPLICER DETAILS  
STRUCTURE NO. 082-0077

SHEET NO. 23 OF 28 SHEETS

F.A.P. RTE.	SECTION	COUNTY	TOTAL SHEETS	SHEET NO.
817	421 BR -1	ST. CLAIR	43	38
			CONTRACT NO.	76F75
ILLINOIS FED. AID PROJECT				