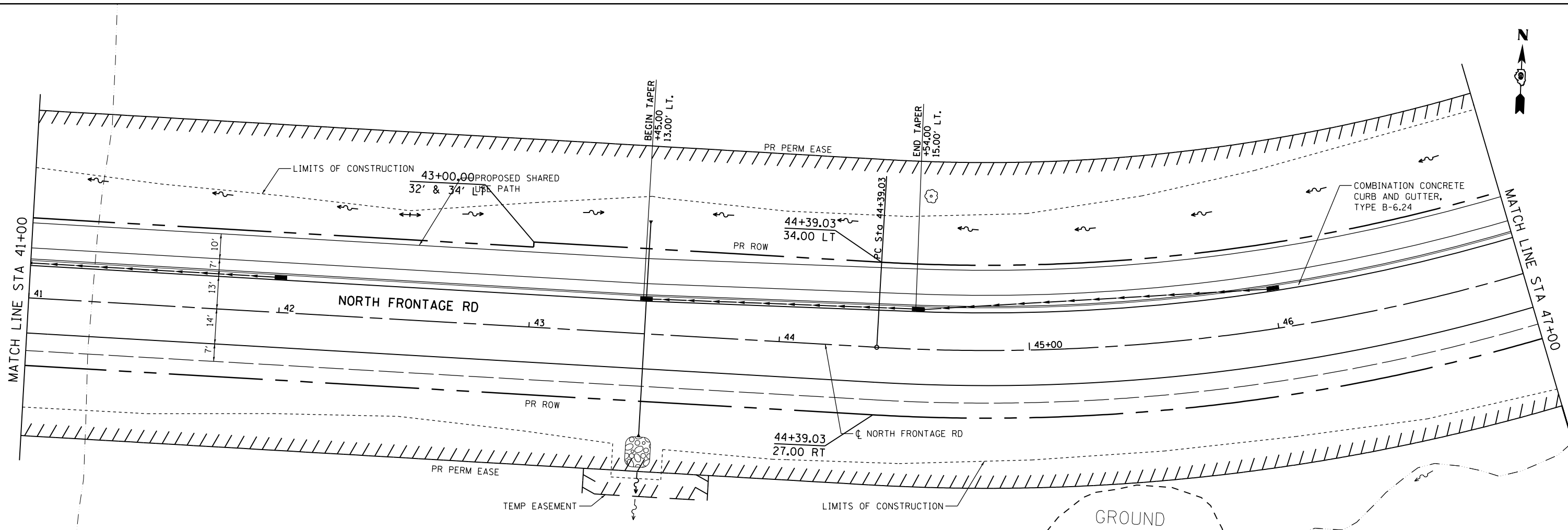


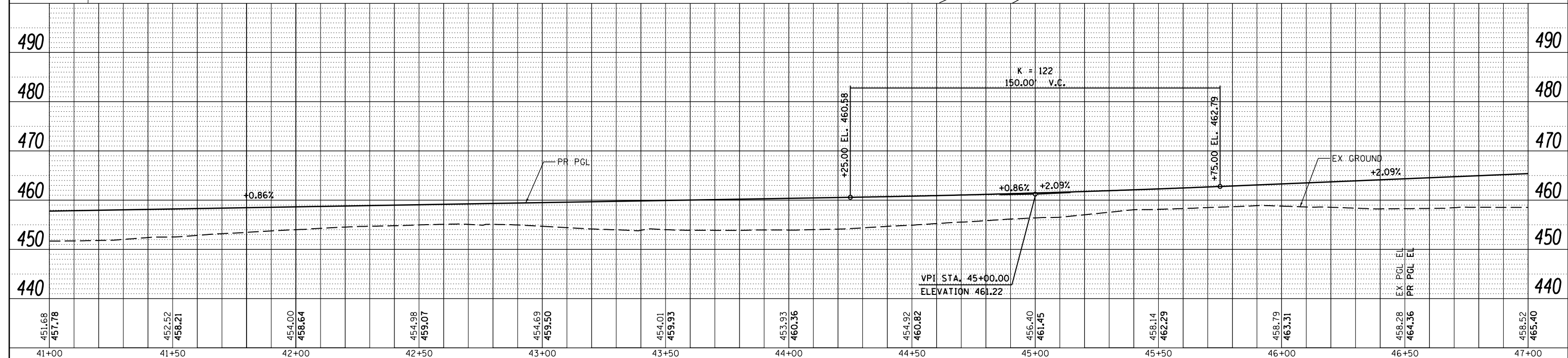
PLAN	SURVEYED	DATE
	PLOTTED	BY
	GRADES CHECKED	
	STRUCTURE NOTATIONS CHECKED	
	NOTE BOOK NO.	
	FILE NAME	

PROFILE	SURVEYED	DATE
	PLOTTED	BY
	GRADES CHECKED	
	STRUCTURE NOTATIONS CHECKED	
	NOTE BOOK NO.	
	FILE NAME	



LEGEND	
	TREE REMOVAL (6 TO 15 UNITS DIAMETER)
	TREE REMOVAL (OVER 15 UNITS DIAMETER)

BENCHMARK		
BENCHMARK	ELEVATION	DESCRIPTION
BM12	445.70	CUT SQUARE ON THE TOP OF THE SOUTH HEADWALL OF A 24" ACROSS ROAD CULVERT, IN THE SW QUADRANT OF RTE 13 EBL AND NORTH WOLF CREEK ROAD, 132.11' RIGHT OF THE CL OF RTE 13 WBL STA 519+39.87



FILE NAME =	USER NAME = \$USER*	DESIGNED - CK	REVISED -	STATE OF ILLINOIS DEPARTMENT OF TRANSPORTATION	PLAN AND PROFILE SHEETS NORTH FRONTAGE ROAD	F.A.P. RTE.	SECTION	COUNTY	TOTAL SHEETS	SHEET NO.
c:\pwork\pwork\collem\0265445\097825\sheet\p1nprf-04.dgn		DRAWN - MP	REVISED -			331	(1-3)R-3	WILLIAMSON	58	24
PLOT SCALE = 40.0000' / in.		CHECKED - DM	REVISED -			DRAWING NO.		CONTRACT NO. 78259		
PLOT DATE = 2/22/2013		DATE - 7/6/2012	REVISED -			SCALE:		SHEET NO. 4 OF 5 SHEETS		STA. 41+00.00 TO STA. 47+00.00



ILLINOIS FED. AID PROJECT