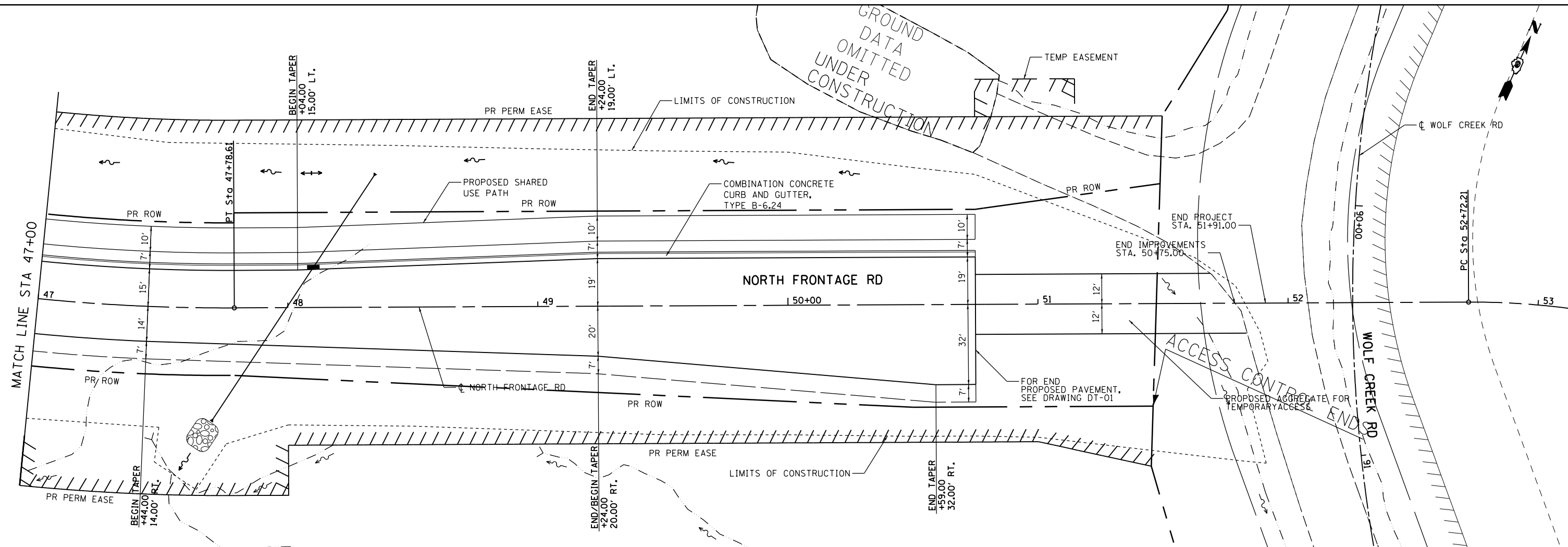


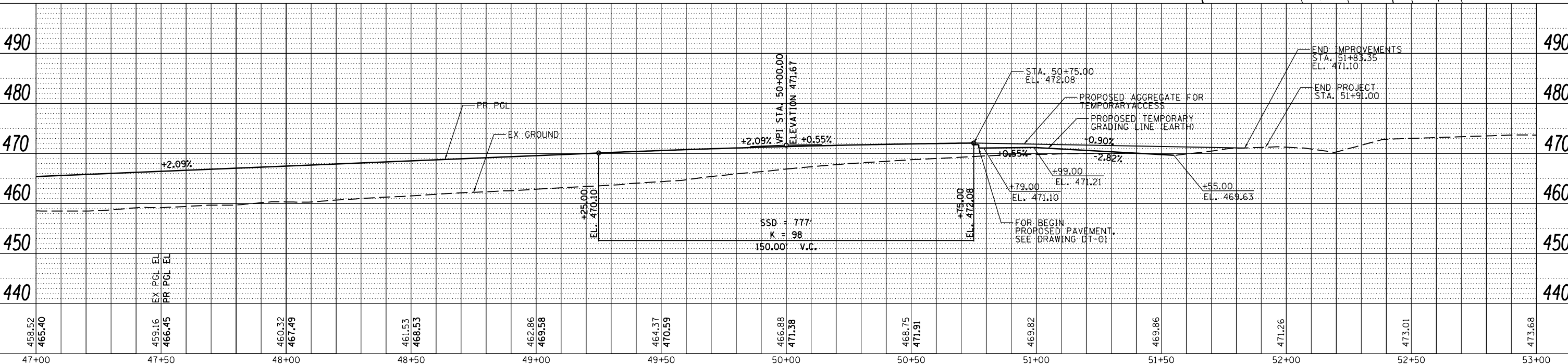
PLAN	SURVEYED	DATE
	PLOTTED	
	ALIGNED	
	CHECKED	
	FILED	
	NO.	

PROFILE	SURVEYED	DATE
	PLOTTED	
	GRADES CHECKED	
	STRUCTURE NOTATIONS CHECKED	
	NO.	



LEGEND	
	TREE REMOVAL (6 TO 15 UNITS DIAMETER)
	TREE REMOVAL (OVER 15 UNITS DIAMETER)

BENCHMARK		
BENCHMARK	ELEVATION	DESCRIPTION
BM12	445.70	CUT SQUARE ON THE TOP OF THE SOUTH HEADWALL OF A 24" ACROSS ROAD CULVERT. IN THE SW QUADRANT OF RTE 13 EBL AND NORTH WOLF CREEK ROAD, 132.11' RIGHT OF THE CL OF RTE 13 WBL STA 519+39.87



FILE NAME =	USER NAME = USER*	DESIGNED - CK	REVISED -
c:\pwwork\pwwork\collem\0265445\097825\sheet\p1npr f-05.dgn		DRAWN - MP	REVISED -
		CHECKED - DM	REVISED -
		DATE - 7/6/2012	REVISED -

CH2MHILL

STATE OF ILLINOIS
DEPARTMENT OF TRANSPORTATION

PLAN AND PROFILE SHEETS
NORTH FRONTAGE ROAD

SCALE: SHEET NO. 5 OF 5 SHEETS STA. 47+00.00 TO STA. 50+75.00

F.A.P. RTE.	SECTION	COUNTY	TOTAL SHEETS	SHEET NO.
331	(1-3)R-3	WILLIAMSON	58	25
DRAWING NO.		CONTRACT NO. 78259		
ILLINOIS FED. AID PROJECT				