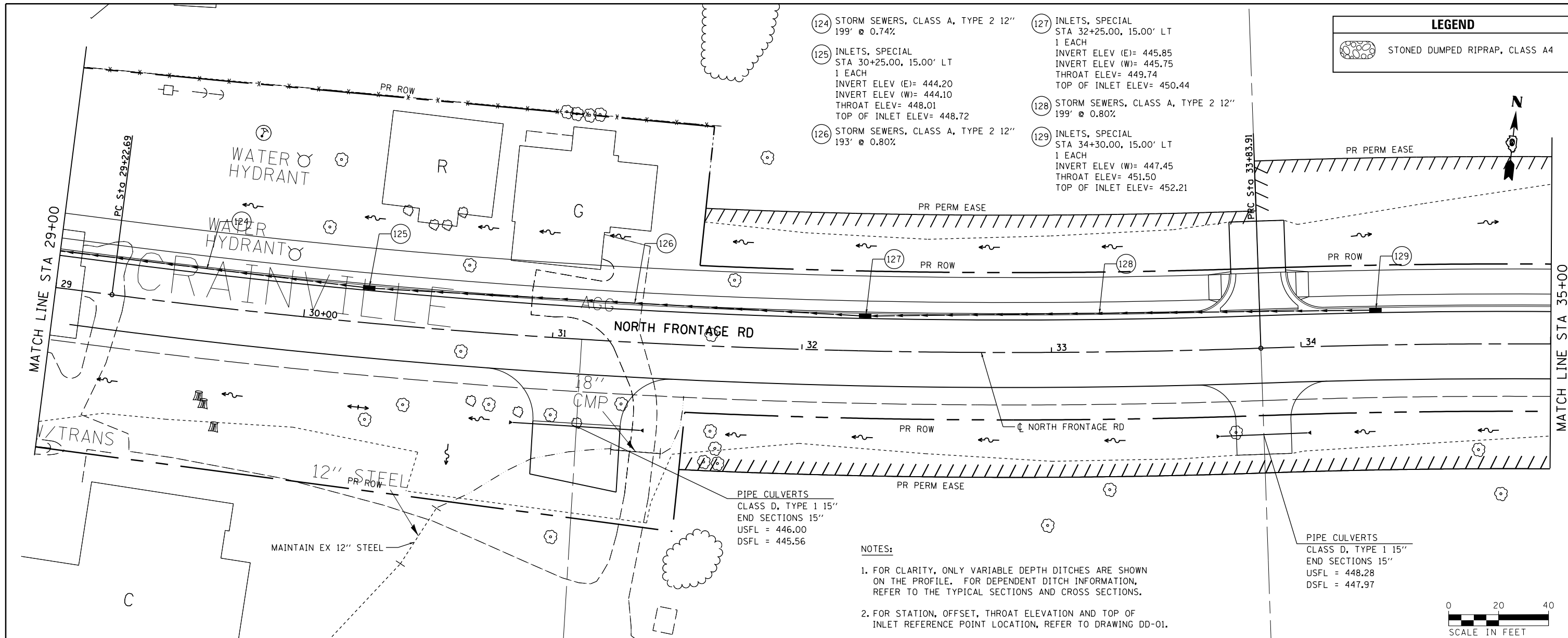


PLAN	SURVEYED	DATE
	PLOTTED	BY
	NOTE BOOK	
	NO.	
	CHECKED	
	FILE NAME	

PROFILE	SURVEYED	DATE
	PLOTTED	BY
	GRADES CHECKED	
	STRUCTURE NOTATIONS CHECKED	
	NO.	



- 124 STORM SEWERS, CLASS A, TYPE 2 12" 199' @ 0.74%
- 125 INLETS, SPECIAL STA 30+25.00, 15.00' LT 1 EACH INVERT ELEV (E)= 444.20 INVERT ELEV (W)= 444.10 THROAT ELEV= 448.01 TOP OF INLET ELEV= 448.72
- 126 STORM SEWERS, CLASS A, TYPE 2 12" 193' @ 0.80%
- 127 INLETS, SPECIAL STA 32+25.00, 15.00' LT 1 EACH INVERT ELEV (E)= 445.85 INVERT ELEV (W)= 445.75 THROAT ELEV= 449.74 TOP OF INLET ELEV= 450.44
- 128 STORM SEWERS, CLASS A, TYPE 2 12" 199' @ 0.80%
- 129 INLETS, SPECIAL STA 34+30.00, 15.00' LT 1 EACH INVERT ELEV (W)= 447.45 THROAT ELEV= 451.50 TOP OF INLET ELEV= 452.21

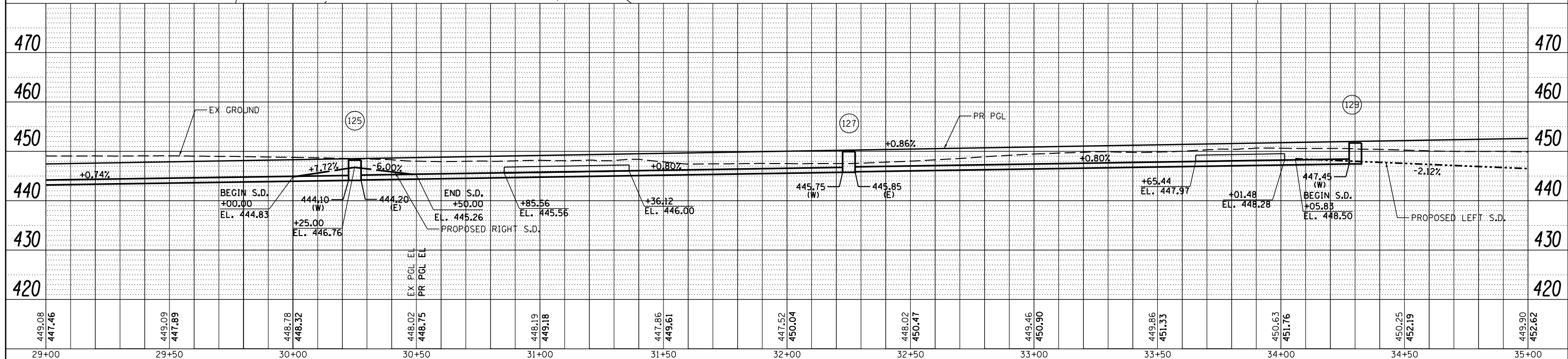
LEGEND

STONED DUMPED RIPRAP, CLASS A4

PIPE CULVERTS
CLASS D, TYPE 1 15"
END SECTIONS 15"
USFL = 446.00
DSFL = 445.56

PIPE CULVERTS
CLASS D, TYPE 1 15"
END SECTIONS 15"
USFL = 448.28
DSFL = 447.97

- NOTES:**
- FOR CLARITY, ONLY VARIABLE DEPTH DITCHES ARE SHOWN ON THE PROFILE. FOR DEPENDENT DITCH INFORMATION, REFER TO THE TYPICAL SECTIONS AND CROSS SECTIONS.
 - FOR STATION, OFFSET, THROAT ELEVATION AND TOP OF INLET REFERENCE POINT LOCATION, REFER TO DRAWING DD-01.



449.08 447.46	449.09 447.89	448.78 448.32	448.02 448.75	448.19 449.18	447.86 449.61	447.52 450.04	448.02 450.47	449.46 450.90	449.86 451.33	450.63 451.76	450.25 452.19	449.90 452.62
29+00	29+50	30+00	30+50	31+00	31+50	32+00	32+50	33+00	33+50	34+00	34+50	35+00

FILE NAME =
c:\pwork\pwork\colenn\d0265445\097825\sheet-draw-02.dgn
CH2MHILL

USER NAME = \$USER\$
DESIGNED - CK
DRAWN - MP
CHECKED - DM
DATE - 7/6/2012

REVISED -
REVISED -
REVISED -
REVISED -

**STATE OF ILLINOIS
DEPARTMENT OF TRANSPORTATION**

**DRAINAGE AND UTILITIES SHEETS
NORTH FRONTAGE ROAD**
SCALE: SHEET NO. 2 OF 5 SHEETS STA. 29+00.00 TO STA. 35+00.00

F.A.P. RTE.	SECTION	COUNTY	TOTAL SHEETS	SHEET NO.
331	(1-3)R-3	WILLIAMSON	58	30
DRAWING NO.		CONTRACT NO. 78259		
ILLINOIS FED. AID PROJECT				