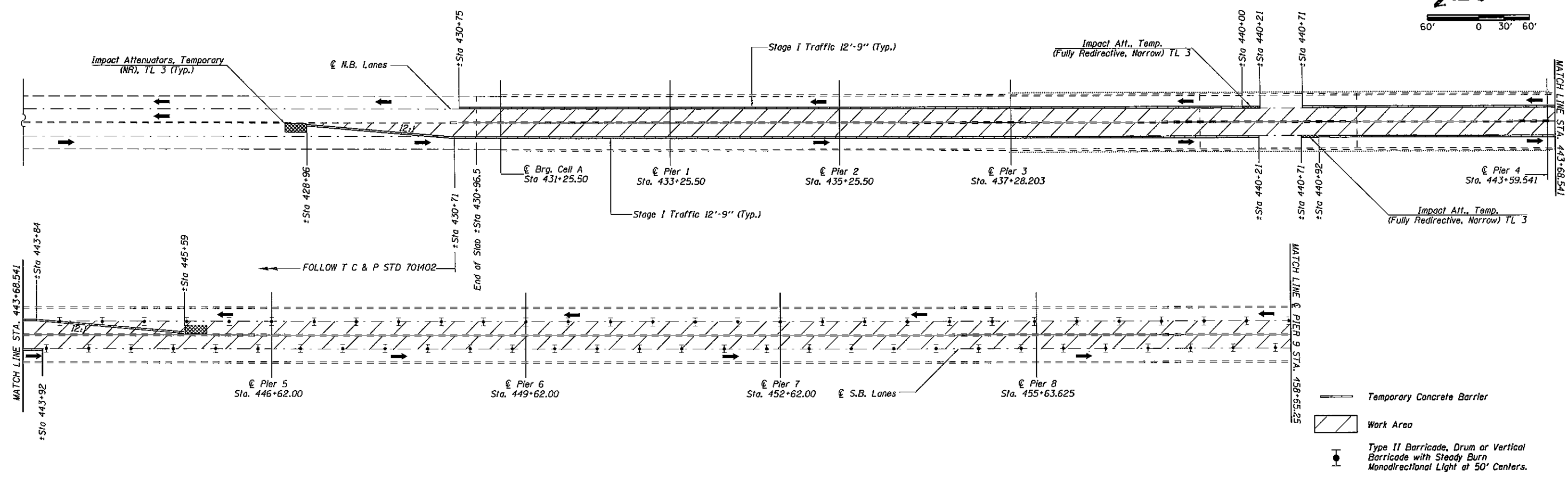
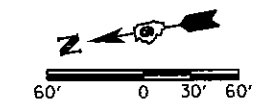
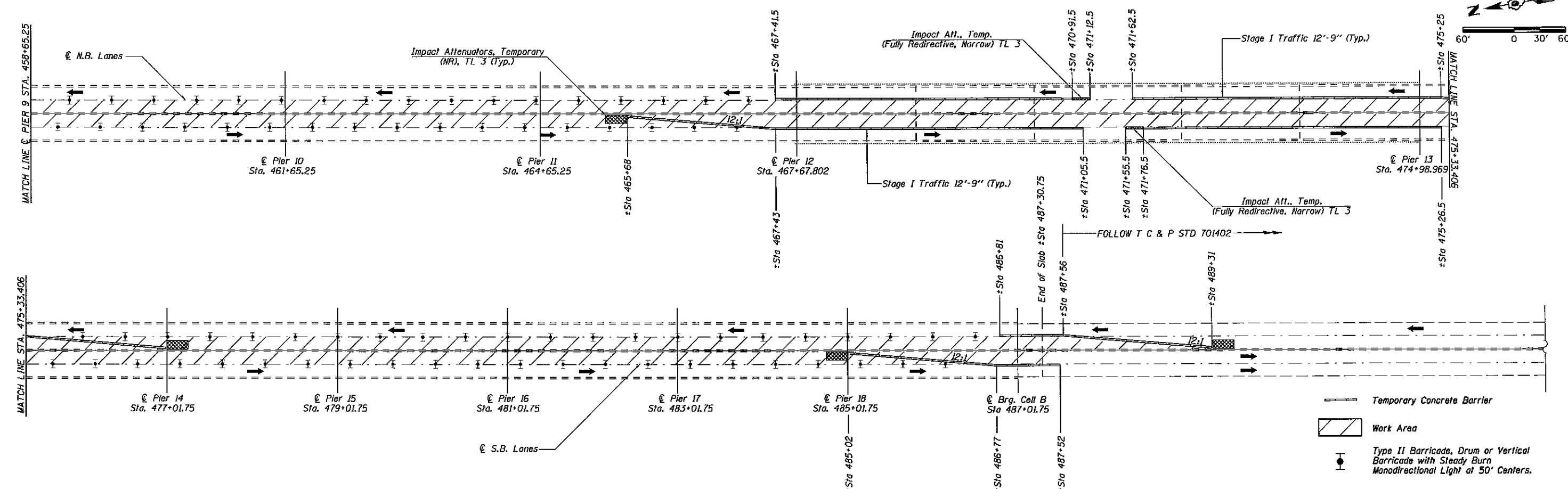
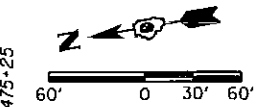


STAGE I



- Temporary Concrete Barrier
- Work Area
- Type II Barricade, Drum or Vertical Barricade with Steady Burn Monodirectional Light at 50' Centers.

STAGE I



- Temporary Concrete Barrier
- Work Area
- Type II Barricade, Drum or Vertical Barricade with Steady Burn Monodirectional Light at 50' Centers.

FILE NAME = c:\pwork\p1dot\holssteadtw\0326862\78293-sht-pln.dgn	USER NAME = holssteadtw	DESIGNED -	REVISED -	STATE OF ILLINOIS DEPARTMENT OF TRANSPORTATION	STAGE CONSTRUCTION STAGE I			F.A.I. RTE.	SECTION	COUNTY	TOTAL SHEETS	SHEET NO.
	PLOT SCALE = 1/20000 1/4" = 100'	DRAWN -	REVISED -					24	BSMART 2013-1	MASSAC	23	6
Default	PLOT DATE = 2/11/2013	CHECKED -	REVISED -	SCALE:	SHEET	OF	SHEETS	STA.	TO	STA.	CONTRACT NO. 78293 ILLINOIS FED. AID PROJECT	